

# Strong, safe and long-lasting

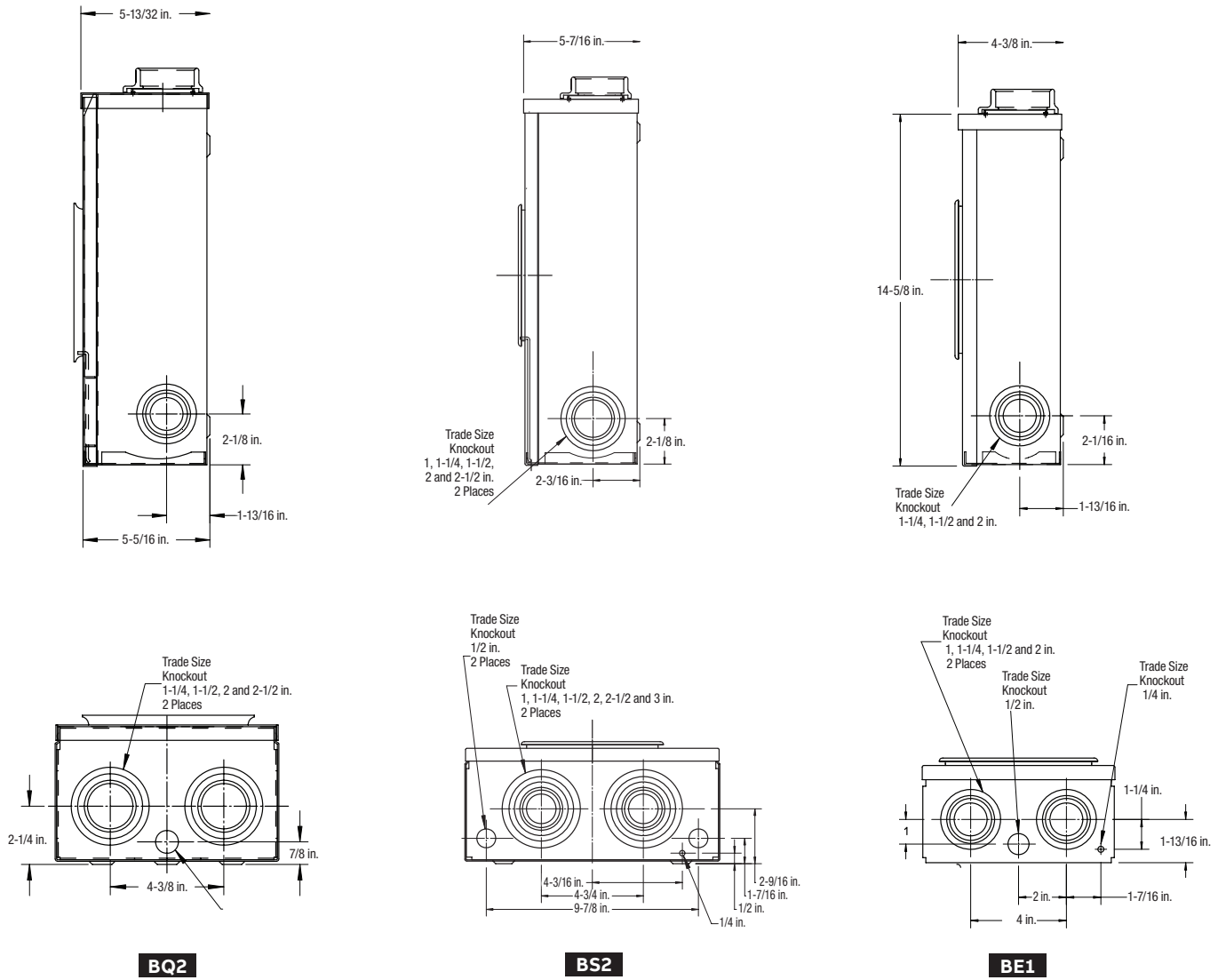


Model illustrated: BQ2-TCV-CR

## Corrosion-resistant option on selected Microelectric® BQ2, BE1 and BS2 models

- Designed and manufactured in Canada for the Canadian climate – withstands temperature variations from -40°C to 90°C
- Superior resistance to corrosion in all types of environments – ideally suited for coastal and industrial areas
- Suitable for both overhead and underground installations – reduces inventory requirements
- Robust galvanized steel construction
- New elegant and distinctive colour identifies CR option meter sockets
- Meets the requirements of the 2018 Canadian Electrical Code

# Available models



## Combination overhead & underground meter socket with weatherproof type 3RX enclosure



	Factory-installed accessories	Amps/Volts	Conductor range	Dimensions (in.)			Weight
				H	W	D	(lb. / kg)
<b>BQ2-TCV-CR</b>	—	200 A 600 V	6 AWG–250 kcmil	15-5/8	8-47/64	5-13/32	12 lb. / 5.4 kg
<b>BQ2-TCVGN-CR</b>	Ground on neutral	200 A 600 V	6 AWG–250 kcmil	15-5/8	8-47/64	5-13/32	12 lb. / 5.4 kg
<b>BE1-TCV-CR</b>	—	100 A 600 V	6-1/0 AWG	14-5/8	8-1/4	4-3/8	8 lb. / 3.6 kg
<b>BE1-INTCV-CR</b>	Insulated neutral	100 A 600 V	6-1/0 AWG	14-5/8	8-1/4	4-3/8	8 lb. / 3.6 kg
<b>BS2-TCVBC-CR</b>	—	200 A 600 V	6 AWG–250 kcmil	17-1/8	12	5-7/16	14 lb. / 6.3 kg
<b>BS2-INTCVBC-CR</b>	Insulated neutral	200 A 600 V	6 AWG–250 kcmil	17-1/8	12	5-7/16	14 lb. / 6.3 kg
<b>BS2-TCVGNBC-CR</b>	Ground on neutral	200 A 600 V	6 AWG–250 kcmil	17-1/8	12	5-7/16	14 lb. / 6.3 kg
<b>BQ2-2V-CR</b>	—	200 A 600 V	6 AWG–250 kcmil	15-5/8	8-47/64	5-13/32	12 lb. / 5.4 kg
<b>BQ2-2VGN-CR</b>	Ground on neutral	200 A 600 V	6 AWG–250 kcmil	15-5/8	8-47/64	5-13/32	12 lb. / 5.4 kg



—  
**ABB Installation Products Ltd.**  
700 Thomas Avenue  
Saint-Jean-sur-Richelieu, Quebec  
J2X 2M9

Tel.: (450) 347-5318  
Fax: (450) 347-1976

**[tnb.ca.abb.com](http://tnb.ca.abb.com)**