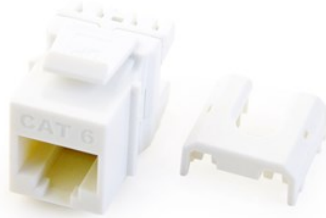

CAT 6 QUICK CONNECT RJ45 KEYSTONE INSERT, WHITE

WP3476-WH | [On-Q](#)



FEATURES & BENEFITS



PRODUCT
ENVIRONMENTAL PROFILE

- Easily terminate all four pairs using the Legrand Punch & Go Tool (AC3400)
- RJ45 Inserts can be terminated with any 110 punchdown tool
- Exceeds EIA/TIA 568A/B Cat 6 Performance Specifications
- Available in Black, Brown, White, Light Almond, Grey, Blue, Orange
- Available in contractor packs

SPECIFICATIONS

GENERAL INFO

Cable Type: Cat 6
Color: White
Finish: 50 microinches 24K Hard Gold over 70-100 microinches Nickel
Pair Count: 4
Termination: via Punchdown Tool
Connection Type: 8P8C
Type: Keystone Insert
Input Plug Type: RJ45 Male

LISTING AGENCIES/THIRD PARTY CERTIFICATIONS

RoHS: Yes
CSA Listing Info: CAN/CSA-C22.2 No. 182.4-1990
CSA Standard: Yes
UL Listing No: ANSI/UL 1863
UL Standard: Yes
UN SPSC: 39121704

DIMENSIONS

Depth (Metric): 30 mm
Depth (US): 1.18"
Height (Metric): 22 mm
Height (US): .87"
Width (Metric): 16.9 mm
Width (US): .665 in

TECHNICAL INFORMATION

Humidity: Max Noncondensing 93%
Material: Phosphor Bronze Alloy
Mounting: Wallplate or Strap
OhmValue: Contact Resistance: Spring Wire - 20 milliohm max, IDC - 2.5 milliohm max
Operating Temperature (Celsius): -10°C to 60°C
Storage Temperature: -40°C to 70°C
Wire Gauge: 22 - 24 AWG
Receptacle Type: RJ45 Female
Number Of Receptacles: 1