**Features**

- Only 4-3/4" deep
- Smooth opal acrylic diffuser standard (**ZO**)
- Also available with a clear prismatic lens (**VB**)
- Suitable for mounting on low density surfaces
- Individual or continuous row mounting (see options)
- Spring-loaded end cap (CSW and CSB only)
- Choice of white (**CSW**) or black (**CSB**) housing
- CSW/CSB not available for end conduit feed
- Recommended to use 3500K T8 lamps

Options (p. 212-216)

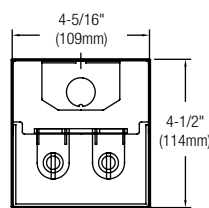
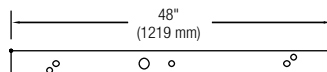
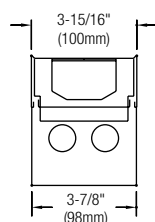
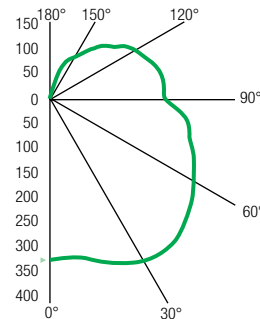
Ballast: Specify voltage (120, 277, UNV or 347) to surface strip fixture and add suffix, e.g. **UNVHI**.

HI: Elect. I.S., T8, 1 or 2 LPB, <10% THD

PS: Elect. PowerSpec HDF Dimming P.S., T8, 1 or 2 LPB, <10% THD, 347V N/A

LPB: Number of lamps per ballast

Coupler: When there are more than 2 fixtures in a continuous row, order cat. no. **CSWCPL** (white) or **CSBCPL** (black).

CSW 4'**(CTW)****(CSW)****CSW148-UNVHIZO (Data)**

RCR	C. U.
1	68
2	58
3	51
4	44
5	39
6	34
7	31
8	27
9	25
10	22

Diffuser for Cubelite:

Suffix: **ZO** = Opal Acrylic (standard)

VB = Prismatic Acrylic

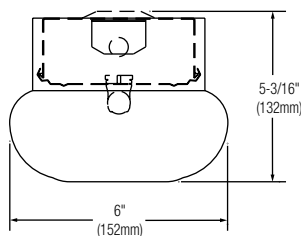
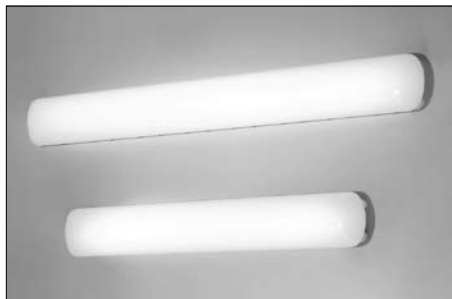
Electrical/Wiring Options: For special wiring or emergency packs, consult your Canlyte representative.

Internal Fusing: Consult your Canlyte representative.

Body colour: Replace **CSW** (white) by **CSB** (black) in the basic catalogue number.

Cloud Bracket 24", 36", 48" (CCW)

Surface/Wall Luminaire • Decorative Diffuser

**Features**

- Softly diffused lighting provides even illumination in decorative residential and high-style commercial applications
- Soft curvature white acrylic diffuser
- Wall mounted design for bathroom, corridors or hallways
- Complementary design to the Belmont Cloud (see p. 121)
- Complete luminaire consists of Lens Assembly and Strip fixture. Order each item separately
- Not suitable for row mounting

Options (p. 212-216)

Ballast: Specify voltage (120, 277, UNV or 347V) to Surface Strip fixture and add suffix, e.g. **UNVHI**.

HI: Elect. I.S., T8, 1 or 2 LPB, <10% THD

PS: Elect. PowerSpec HDF Dimming P.S., T8, 1 or 2 LPB, <10% THD, 347V N/A

LPB: Number of lamps per ballast

Ordering Guide

Type	Length	Width	Height	Lamp Qty/Type	Lens Cat. No.	Order with Strip Cat. No.
Cloud	26-3/4"	6"	4-1/2"	1-T8	CCWLN2	SB1W2
Bracket	38-3/4"	6"	4-1/2"	1-T8	CCWLN3	SB1W3
Diffuser	50-3/4"	6"	4-1/2"	1-T8	CCWLN4	SB1W4
	26-3/4"	6"	4-1/2"	2-T8	CCWLN2	SB224
	38-3/4"	6"	4-1/2"	2-T8	CCWLN3	SB236
	50-3/4"	6"	4-1/2"	2-T8	CCWLN4	SB248

CCWLN**4**

Basic Catalogue Number:
Cloud Bracket Lens

Nominal Length:

2: 2'

3: 3'

4: 4'

Reference Data	
Efficiency	72.9%
Spacing Ratio	1.7
Electronic Ballast	
Input Watts (120V)	62.0W
Ballast Factor	.88

Application Data*		
Luminaire Spacing	FC	W/Sq Ft
4' W x 8.5' H Corridor	39	1,7
6' W x 8.5' H Corridor	36	1.1
8' W x 8.5' H Corridor	33	0.8

Ordering Guide				
Type	Lamp Qty/Type	Lamp/Luminaire Nominal Length	Luminaire Width	Catalogue Number
Cubelite	1-T8	24"	4"	CSW124
	2-T8	24"	4"	CSW224
	1-T8	36"	4"	CSW136
	2-T8	36"	4"	CSW236
	1-T8	48"	4"	CSW148
	2-T8	48"	4"	CSW248

CSW124

Basic Catalogue Number:
Prismatic

UNV

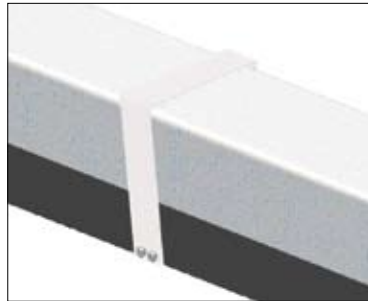
Voltage:
120: 120V
277: 277V
UNV: 120-277V
347: 347V

HI

Ballast:
See p. 132

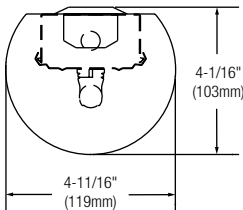
ZO

Diffuser:
ZO: Opal
VB: Prismatic



Coupler to join two or more Cubelites.
Offered in white (**CSWCPL**) and black (**CSBCPL**).

Vanity Bracket 24", 36", 48" (CVW)
Surface/Wall Luminaire • Decorative Diffuser



Ordering Guide						
Type	Length	Width	Height	Lamp Qty/Type	Lens Cat. No.	Order with Strip Cat. No.
Smooth White	25-3/8"	4-3/4"	4"	1-T8	CVWLN2-SW	SB124
	37-3/8"	4-3/4"	4"	1-T8	CVWLN3-SW	SB136
	49-3/8"	4-3/4"	4"	1-T8	CVWLN4-SW	SB148
Fluted White	25-3/8"	4-3/4"	4"	1-T8	CVWLN2-FW	SB124
	37-3/8"	4-3/4"	4"	1-T8	CVWLN3-FW	SB136
	49-3/8"	4-3/4"	4"	1-T8	CVWLN4-FW	SB148
Fluted Clear	25-3/8"	4-3/4"	4"	1-T8	CVWLN2-FC	SB124
	37-3/8"	4-3/4"	4"	1-T8	CVWLN3-FC	SB136
	49-3/8"	4-3/4"	4"	1-T8	CVWLN4-FC	SB148

CVWLN

Basic Catalogue Number:
Vanity Bracket Lens

4

Length:
4'

SW

Acrylic Variation:
Smooth White



Features

- Choice of 3 basic modules and 3 distinctive acrylic variations in aesthetics and performance
- **Smooth White** – accentuates the simplicity of a smooth, diffused surface
- **Fluted White** – features an elegant, fluted design with hint of opalescence
- **Fluted Clear** – emphasizes a bold fluted lens
- Molded ends
- Wall mounted
- Complete luminaire consists of Lens Assembly and Strip fixture. Order each item separately
- Not suitable for row mounting

Options (p. 212-216)

Ballast: Specify voltage (120, 277, UNV or 347V) to Surface Strip fixture and add suffix, e.g. **UNVHI**.

HI: Elect. I.S., T8, 1 or 2 LPB, <10% THD

PS: Elect. PowerSpec HDF Dimming P.S., T8, 1 or 2 LPB, <10% THD, 347V N/A

LPB: Number of lamps per ballast