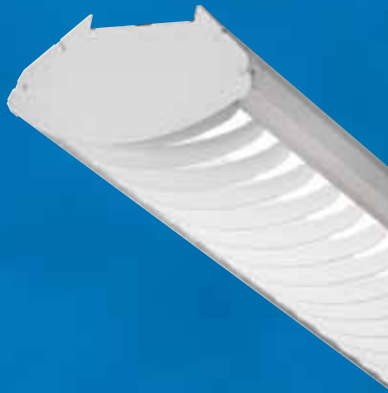


**First order ~
SV4 STRIP
(1 or 2 Lamps)**



**Then order ~
SV5 Reflector and
shielding options**



**Now you have a
Complete SV5
luminaire**



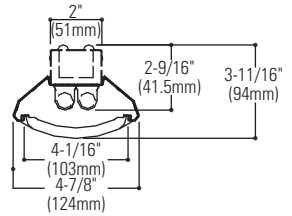
SV5 Louver and Lens Series

For 1 and 2- Lamp 46" T5 Strip (SV)



SV5LVW4SPER/SV4S228UNVPG

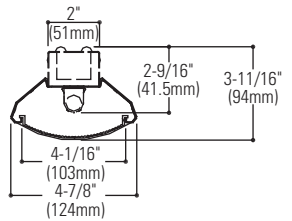
(White Perforated Reflector with
White Perforated Radial Louver)
Two 28W T5 Fluorescent lamps



Dimensions are the same
for 1 or 2-lamp luminaire.

SV5CLW4SPER/SV4S154UNVPG

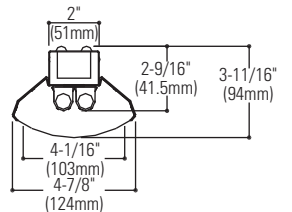
(White Perforated Reflector with
Clear Linear Lens)
One 54W T5 HO Fluorescent lamp



Dimensions are the same
for 1 or 2-lamp luminaire.

SV5XXW4SSLD/SV4S228UNVPG

(White Solid Reflector / Open Reflector)
Two 28W T5 Fluorescent lamps



Dimensions are the same
for 1 or 2-lamp luminaire.

Stylish, when utilizing either the radial louver or linear ribbed prismatic lens, or practical in instances where no optic is required and shielded light is required. The SV5 Series offers many combinations within its offering that allow combinations of either solid, slotted or perforated reflector designs to be interchanged with different radial louver or lens options. The new reflector design also offers a nice alternative to the standard straight blade reflector when used without the lens/louver option.

Features

- 90.6 % Efficiency - Based on 1-54W SV Strip with Perforated Reflector and Clear Linear Ribbed Lens
- 86.1% Efficiency - Based on 2-28W SV Strip with Perforated Reflector and Perforated Radial Louver
- Post painted with high efficiency white powdered paint
- Lay-in design optic allows for easy lamp maintenance
- Low profile 3" 11-16 profile when installed
- Tooled radial louver ensures design consistency in continuous row applications
- Louver - Solid or Perforated Pattern Radial Blade
- Lens - Frosted Linear or Clear Linear

Options / Accessories

Stem and canopy sets: Suspend luminaire 12", 18", 24", 36", or 48" from surface. (Two per luminaire is recommended.) Catalog number: **SV5F12** (12"); **SV5F18** (18"); **SV5F24** (24"); **SV5F36** (36"); **SV5F48** (48").

Aircraft Cable Kits: 60" SV5 Power Feed, Cable and Canopy Kit **SVCC60-UNV** (Adjustable 6"-60") Cable and Canopy Kit **SVCC60** (Adjustable 6"-60")

Chain hanging kit: Includes two 5' heavy duty link chains with sturdy "V" hook for fixture suspension. Catalog number: **EE9HC**

Rocker Switches and Convenience Outlets: Certain combinations of the SV Series strip with the new SV5 Reflector assembly will not accommodate these options.

Please consult the specification sheets or your Lightolier representative.

Note: SV4 T5 Strip and SV5 Reflector are ordered and shipped as separate items.

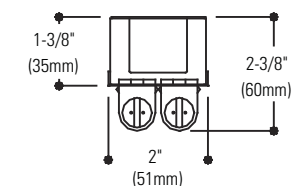
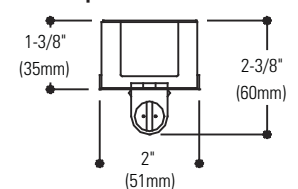
T5 Strip Series 46", 92" (SV)

Surface Strips



- Only 2" Wide
- Utilizes compact, high efficiency, T5 or T5HO lamps
- Fully enclosed wiring
- Optional white or specular, symmetric and asymmetric reflector
- Convenience outlet and switch K.O.s provided
- Push through lamp holders with rotor for secure lamp retention
- Optional hangers and guards

2 T5 Strip



Accessories

For SV and Strip Series



Stem Kit

Suspends luminaire 12", 18", 24", 36", 48" from surface. (For 34" and 46" SV Strip only.)

Catalog Number:

SV5F12 (12"), **SV5F18** (18"), **SV5F24** (24"), **SV5F36** (36"), **SV5F48** (48").



Power Feed Kits and Suspension Kits:

(sold separately)

Catalog Number: Power feed, Cable and Canopy

Suspension kits **SVCC60-UNV**

Adjustable 6"- 60" aircraft cable complete with 3-wire power feed and low profile canopy **SVCC60-UNV**

Cable and Canopy Suspension kits **SVC60**

Adjustable 6"- 60" aircraft cable complete with low profile canopy **SVC60**



Chain Hanger Kit

Two 18" heavy duty link chains with sturdy "V" hooks that grip luminaires at four knockout points for level suspension.

Catalog Number: **EE9HC** (for SV, SB, EE, FF luminaires)



Emergency Ballasts

Certain combinations of the SV Series strip with the new SV5 Reflector assembly will not accommodate this option. Please consult your Lightolier representative to validate the request.

Louver Options

Ordering Guide

SV5 Reflector and Louver Description	Nominal length	SV5 Reflector and Louver Cat. No.*
White Perforated Reflector / White Perforated Radial Blade	46"	SV5LVW4SPER**
White Solid Reflector / Grey Solid Radial Blade	46"	SV5LGW4SSLD**

Only for use with 1 or 2-lamp T5 Strip (SV)

**For Slotted White Reflector, replace Solid White SLD by SLT
For Perforated White Reflector, replace Solid White SLD by PER
For White Perforated Radial Blade Louver, replace LW with LV
For Grey Perforated Radial Blade Louver, replace LG with LH

SV5 Model	LV Louver Design	W4 Reflector Length	S Light Distribution	PER Reflector Style
SV5 Reflector Accessory	LV = White Perforated Blade LW = White Solid Blade LG = Grey Solid Blade LH = Grey Perforated Blade	W4 = Nominal 46" White (Std)	S = Symmetric	SLD = Solid SLT = Slotted PER = Perforated

Lens Options

Ordering Guide

SV5 Reflector and Lens Description	Nominal length	SV5 Reflector and Lens Cat. No.*
White Perforated Reflector / Clear Linear Lens	46"	SV5CLW4SPER**
White Slotted Reflector / Frosted Linear Lens	46"	SV5FLW4SSLT**

Only for use with 1 or 2-lamp T5 Strip (SV)

**For Perforated White Reflector, replace Slotted White SLT by PER

SV5 Model	CL Lens Design	W4 Reflector Length	S Light Distribution	PER Reflector Style
SV5 Reflector Accessory	CL = Clear Linear Lens FL = Frosted Linear Lens	W4 = Nominal 46" White (Std)	S = Symmetric	SLT = Slotted PER = Perforated

Ordering Guide

SV5 Reflector w/o lens/louver	Nominal length	SV5 Reflector Cat. No.*
White Solid Reflector	46"	SV5XXW4SSLD**
White Solid Reflector	46"	SV5XXW4SSLD**
White Solid Reflector	46"	SV5XXW4SSLD**

Lens option not available with a solid reflector

Only for use with 1 or 2-lamp T5 Strip (SV)

**For Slotted White Reflector, replace Solid White SLD by SLT
For Perforated White Reflector, replace Solid White SLD by PER

SV5 Model	XX	W4 Reflector Length	S Light Distribution	SLD Reflector Style
SV5 Reflector Accessory	XX = No Lens or Louver	W4 = Nominal 46" White (Std)	S = Symmetric	SLD = Solid (N/A with Lens option) SLT = Slotted PER = Perforated

Ordering Guide

Type	Nominal length	Number of lamps	T5	T5HO
STRIP T5	46"	1	SV4S128	SV4S154
	46"	2	SV4S228	SV4S254
	92"	2 (tandem)	SV8S128	SV8S154
	92"	4 (tandem)	SV8S228	SV8S254

SV4S228	UNV	PG	
Basic catalog number: Strip T5	Voltage: UNV (120/277V) 120 OR 277	Ballast: See Right	Options: See Above

Note: Two SV5 accessories are required for 92" luminaire.

Please reference Lightolier's 2008-2009 Comprehensive Lighting Handbook for full offering of T5 strip fixtures.

Options Ballast:

Specify voltage (120, 277 or UNV) and add suffix, e.g. UNVPG.

Electronic T5

1 or 2 LPB Program Start: PG

1 or 2 LPB Instant Start (28 watt only): PI

1 or 2 LPB Power Spec Dimming: PF

LPB: Number of lamps per ballast.


Lightolier is a Philips group brand

**631 Airport Road
Fall River, MA 02720
Phone (508) 679-8131
Fax (508) 674-4710
www.lightolier.com**

**3015 Rue Louis Amos
Lachine (Quebec) H8T 1C4
Phone (514) 636-0670
www.canlyte.com**

© 2008 Philips Group.
All rights reserved. Certain
products illustrated in this
catalog may be protected
by applicable patents and
patents pending. Lightolier
will aggressively defend all
of its intellectual property.
We reserve the right to
change details of design,
materials and finishes.

A.I.A. Division 16
Brochure LOL9099
Folio H120-16

 Some luminaires use fluorescent
or high intensity discharge (HID)
lamps that contain small amounts of
mercury. Such lamps are labeled
"Contains Mercury" and/or with the
symbol "Hg." Lamps that contain
mercury must be disposed of in
accordance with local requirements.
Information regarding lamp recycling
and disposal can be found at
www.lamprecycle.org.

Printed in the U.S.A.