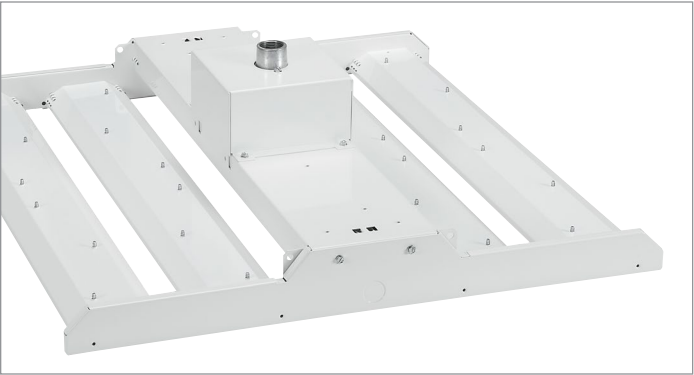


Explore your options

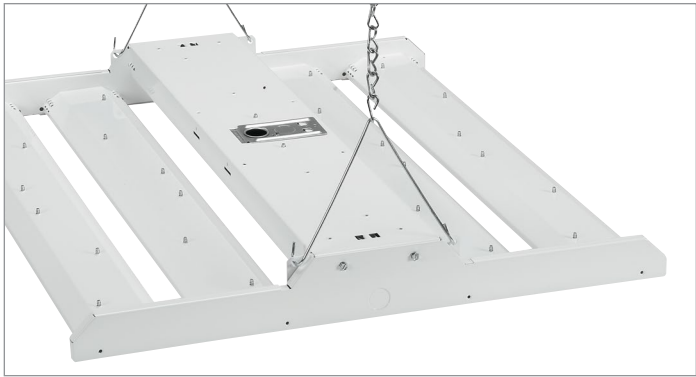
This comprehensive LED high bay family is ideal for illuminating warehouses, industrial areas, big box retail settings, along with many other applications.

A variety of mounting options are available, including chain, pendant, and cable. Dimming drivers are standard, and motion detectors are optional to give complete control over energy savings. Wire guards are also available.



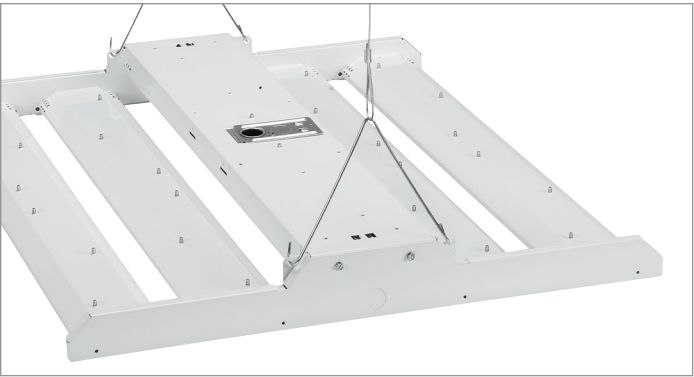
Pendant Hanger

FBX-PENHGR Pendant hanger
(not available for 36,000 or 45,000 lumen versions)



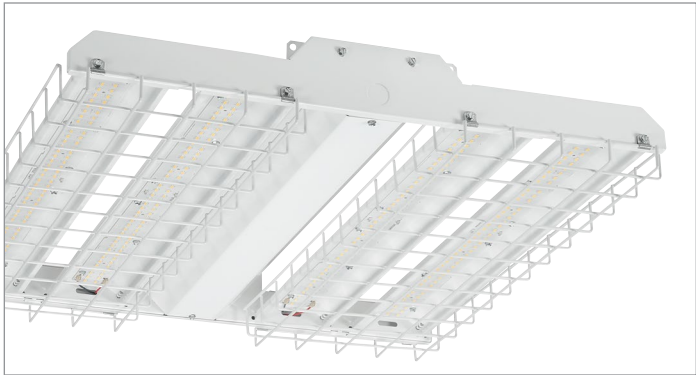
Chain Kit

FBX CHAIN KIT 54" Chains and V brackets



Cable Kit

FBX-GRIP5 5' Cables and V brackets
FBX-GRIP10 10' Cables and V brackets



Wire Guards

WG-FBX-2N Wire guard for 8,000 and 12,000 lumen versions
WG-FBX-2W Wire guard for 16,000, 20,000, and 24,000 lumen versions
WG-FBX-4 Wire guard for 36,000 and 45,000 lumen versions



Emergency Option

EMLED Emergency battery (40°C max)
EMLEDC Emergency battery cold temp (40°C max)