



Project: _____

Fixture Type: _____

Location: _____

Contact/Phone: _____

TRAC - LITES

LOW VOLTAGE CONTEMPORARY

R703, R704, R705, R706, R707

R708, R709, R710 and R741

PRODUCT DESCRIPTION

Socket Ceramic Bi-Pin.

Transformer 50VA 12V electronic transformer with circuit protection
 • Sleek, miniature transformer housing minimizes fixture footprint.

Lamp 50W max. MR16 halogen (or MR16CG cover glass where specified)

Aiming 90° vertical aiming capability and 358° rotation.

Adapter Copper alloy contacts provide precise spring action
 • True, positive electrical ground • Spring-loaded locking latch with embossed polarity arrows secures trac light to trac
 • Compatible with both Trac-Lites and Trac-Master Trac
 • "Pull-up" contact to up position for use on Trac-Master two-circuit trac.

Labels UL/CUL listed.

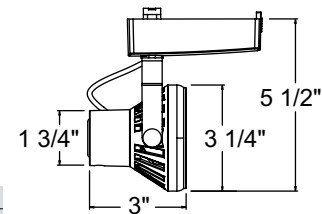
Specifications subject to change without notice.



Low Voltage Funnel

Construction Die cast aluminum housing with die-formed steel yoke • Deep lamp regression and die cast aluminum step baffle to reduce glare • Accepts one media accessory in place of clear glass lens supplied.

Catalog Number	Finish	Lamp
R703 WH	White	12V, 20-50W MR16
R703 BL	Black	12V, 20-50W MR16
R703 SL	Silver	12V, 20-50W MR16
R703 BZ	Bronze	12V, 20-50W MR16



ACCESSORIES

Cat. No.	Description	Cat. No.	Description	Cat. No.	Description
CGF 200	Color Glass Filter	HCLBL 200	Hexagonal Cell Louver - Louver	LSPREAD 200	Linear Spread Glass Lens
DCCF 200	Dichroic Color Correction Filter	DIFF 200	Diffusion Glass Lens	SOLITE 200	Uniformity Lens (Solite)
DGF 200	Dichroic Glass Filter	UVF 200	UV Filter	PRISM 200	Prismatic Spread Glass Lens

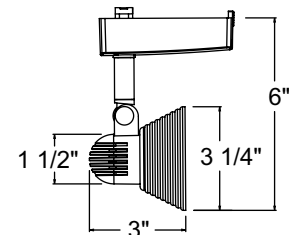
See specification sheet [D1.2.2](#) for details.

Low Voltage Step Glass

Construction Die cast aluminum rear housing with machined stem steel
 • Semi-opaque stepped front glass accent in complementary colors.

Lamp Must be used with MR16 lamps with integral lens (cover glass) except when combined with 2" accessories.

Catalog Number	Housing Finish	Glass Color	Lamp
R704 WH OPLG	White	Opal Frost	12V, 20-50W MR16CG
R704 BL OPLG	Black	Opal Frost	12V, 20-50W MR16CG
R704 SL OPLG	Silver	Opal Frost	12V, 20-50W MR16CG
R704 BZ AMBG	Bronze	Amber Frost	12V, 20-50W MR16CG



ACCESSORIES

Cat. No.	Description	Cat. No.	Description	Cat. No.	Description
CGF 200	Color Glass Filter	HCLBL 200	Hexagonal Cell Louver - Louver	LSPREAD 200	Linear Spread Glass Lens
DCCF 200	Dichroic Color Correction Filter	DIFF 200	Diffusion Glass Lens	SOLITE 200	Uniformity Lens (Solite)
DGF 200	Dichroic Glass Filter	UVF 200	UV Filter	PRISM 200	Prismatic Spread Glass Lens

See specification sheet [D1.2.2](#) for details.



TRAC - LITES

LOW VOLTAGE CONTEMPORARY

R703, R704, R705, R706, R707

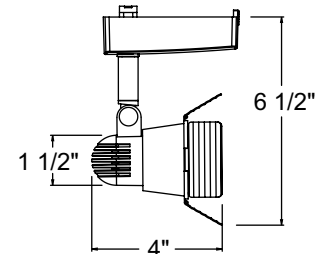
R708, R709, R710 and R741

Low Voltage Barn Doors

Construction Die cast aluminum rear housing with die-formed steel front housing and machined steel stem • Integral barn doors provide lamp shielding and adds a theatrical accent.

Lamp Must be used with MR16 lamps with integral lens (cover glass).

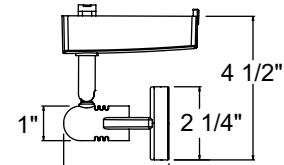
Catalog Number	Housing Finish	Lamp
R705 WH	White	12V, 20-50W MR16CG
R705 BL	Black	12V, 20-50W MR16CG
R705 BZ	Bronze	12V, 20-50W MR16CG



Low Voltage Trumpet

Construction Die cast aluminum housing with machined steel stem • Convenient bayonet mount lamp retention ring simplifies relamping • Accepts one media accessory in place of clear glass lens supplied.

Catalog Number	Finish	Lamp
R706 WH	White	12V, 20-50W MR16
R706 BL	Black	12V, 20-50W MR16
R706 SC	Satin Chrome	12V, 20-50W MR16
R706 BZ	Bronze	12V, 20-50W MR16



ACCESSORIES

Cat. No.	Description	Cat. No.	Description
CGF 200	Color Glass Filter	HCLBL 200	Hexagonal Cell Louver - Louver
DCCF 200	Dichroic Color Correction Filter	DIFF 200	Diffusion Glass Lens
DGF 200	Dichroic Glass Filter	UVF 200	UV Filter

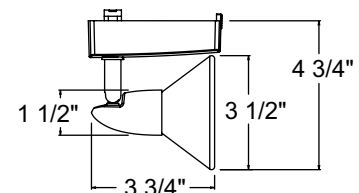
See specification sheet [D1.2.2](#) for details.

Low Voltage Rocket

Construction Die cast aluminum rear housing with machined steel stem • Semi-opaque conical front glass accent in complementary colors.

Lamp Must be used with MR16 lamps with integral lens (cover glass) except when combined with 2" accessories.

Catalog Number	Housing Finish	Glass Color	Lamp
R707 WH OPLG	White	Opal Frost	12V, 20-50W MR16CG
R707 BL OPLG	Black	Opal Frost	12V, 20-50W MR16CG
R707 SC OPLG	Satin Chrome	Opal Frost	12V, 20-50W MR16CG
R707 BZ AMBG	Bronze	Amber Frost	12V, 20-50W MR16CG



ACCESSORIES

Cat. No.	Description	Cat. No.	Description	Cat. No.	Description
CGF 200	Color Glass Filter	HCLBL 200	Hexagonal Cell Louver - Louver	LSPREAD 200	Linear Spread Glass Lens
DCCF 200	Dichroic Color Correction Filter	DIFF 200	Diffusion Glass Lens	SOLITE 200	Uniformity Lens (Solite)
DGF 200	Dichroic Glass Filter	UVF 200	UV Filter	PRISM 200	Prismatic Spread Glass Lens

See specification sheet [D1.2.2](#) for details.

TRAC - LITES

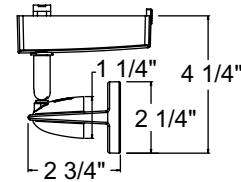
LOW VOLTAGE CONTEMPORARY

R703, R704, R705, R706, R707 R708, R709, R710 and R741

Low Voltage Odyssey

Construction Die cast aluminum housing with machined steel stem • Accepts one media accessory in place of clear glass lens supplied.

Catalog Number	Finish	Lamp
R708 WH	White	12V, 20-50W MR16
R708 BL	Black	12V, 20-50W MR16
R708 SC	Satin Chrome	12V, 20-50W MR16
R708 BZ	Bronze	12V, 20-50W MR16



ACCESSORIES

Cat. No.	Description	Cat. No.	Description
CGF 200	Color Glass Filter	HCLBL 200	Hexagonal Cell Louver - Louver
DCCF 200	Dichroic Color Correction Filter	DIFF 200	Diffusion Glass Lens
DGF 200	Dichroic Glass Filter	UVF 200	UV Filter

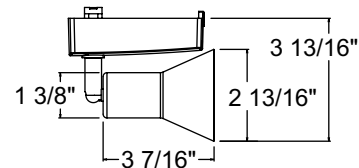
See specification sheet [D1.2.2](#) for details.

Low Voltage Flare

Construction Drawn steel housing with machined steel stem.

Lamp Must be used with MR16 lamps with integral lens (cover glass) except when combined with 2" accessories.

Catalog Number	Housing Finish	Lamp
R709 WH	White	12V, 20-50W MR16CG
R709 BL	Black	12V, 20-50W MR16CG
R709 SC	Satin Chrome	12V, 20-50W MR16CG
R709 BZ	Painted Bronze	12V, 20-50W MR16CG



ACCESSORIES

Cat. No.	Description	Cat. No.	Description	Cat. No.	Description
CGF 200	Color Glass Filter	HCLBL 200	Hexagonal Cell Louver - Louver	LSPREAD 200	Linear Spread Glass Lens
DCCF 200	Dichroic Color Correction Filter	DIFF 200	Diffusion Glass Lens	SOLITE 200	Uniformity Lens (Solite)
DGF 200	Dichroic Glass Filter	UVF 200	UV Filter	PRISM 200	Prismatic Spread Glass Lens
T7400BL	Accessory Holder - Black	T7400BL	Accessory Holder - Satin Aluminum		

See specification sheet [D1.2.2](#) for details.

Low Voltage Bell

Construction Die cast aluminum housing and swivel arm • Deep lamp regression and spun aluminum step baffle to reduce glare.

Lamp Must be used with MR16 lamps with integral lens (cover glass).

Catalog Number	Housing Finish	Lamp
R710 WH	White	12V, 20-50W MR16CG
R710 BL	Black	12V, 20-50W MR16CG
R710 SC	Satin Chrome	12V, 20-50W MR16CG
R710 BZ	Hand-Rubbed Bronze	12V, 20-50W MR16CG

