

JUNO[®]**TRAC-MASTER**[®]

Classics

ROUND BACK CYLINDERS**T326, T327 and T328**

Project: _____

Fixture Type: _____

Location: _____

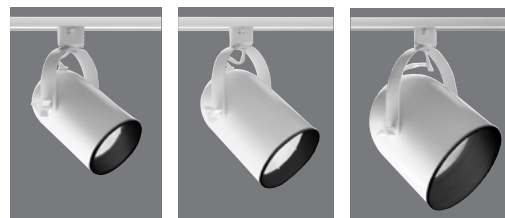
Contact/Phone: _____

PRODUCT DESCRIPTION

Round Back Cylinders with black or white baffles complement any decor.

Construction Drawn steel housing with steel yoke.**Lampholder** Medium base porcelain with nickel plated copper screw shell.**Aiming** 90° vertical aiming capability and 358° rotation • One locking knob provided.**Adapter** Copper alloy contacts provide precise spring action - no arcing and will not take a set • True, positive electrical ground • On/off switch included • Patented embossed polarity arrows on bottom of adapter • Spring-loaded positive latch with embossed polarity arrows secures trac light to trac • Two-position power contact provided for two-circuit application.**Labels** UL listed, CSA certified.

Specifications subject to change without notice.

**T326****T327****T328****Line Voltage R20**

Catalog Number	Baffle	Finish	Lamp
T326 BLB WH	Black	White	50W R20/50W PAR20
T326 BLB BL	Black	Black	50W R20/50W PAR20
T326 WHB WH	White	White	50W R20/50W PAR20

ACCESSORIES

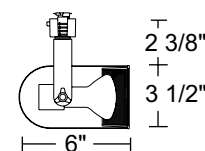
Cat. No.	Description	Cat. No.	Description
HCLBL 375	Hexcell Louver - Black	UVF 375	UV Filter
CCLBL 375	Cube Cell Louver - Black	SOLITE 375	Uniformity Lens (Solite)
SNOOTBL 375	Color Glass Filter	PRISM 375	Prismatic Spread Glass Lens
CGF 375	Color Glass Filter	LSPREAD 375	Linear Spread Glass Lens
DCCF 375	Dichroic Color Correction Filter	T560BL	3-1/2" Diameter Accessory Holder - Black
DGF 375	Dichroic Glass Filter	T71 BL	3-3/4" Diameter Barn Doors - Black †
DIFF 375	Diffusion Glass Lens	T40N¹	Monopoint

See specification sheet [D1.2.2](#) for details. Other accessories can be found on specification sheet [D1.2.0](#).

† Barn Doors accept Color Filters, Lenses, Snoot and Louvers.

Notes:

1 Add finish code to complete catalog number (Example: T40N WH).

**Line Voltage BR30/PAR30L**

Catalog Number	Baffle	Finish	Lamp
T327 BLB WH	Black	White	75W BR30/75W PAR30L
T327 BLB BL	Black	Black	75W BR30/75W PAR30L
T327 WHB WH	White	White	75W BR30/75W PAR30L

ACCESSORIES

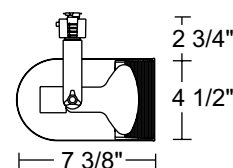
Cat. No.	Description	Cat. No.	Description
HCLBL 469	Hexcell Louver - Black	UVF 469	UV Filter
CCLBL 469	Cube Cell Louver - Black	SOLITE 469	Uniformity Lens (Solite)
SNOOTBL 469	Color Glass Filter	PRISM 469	Prismatic Spread Glass Lens
CGF 469	Color Glass Filter	LSPREAD 469	Linear Spread Glass Lens
DCCF 469	Dichroic Color Correction Filter	T570BL	4-11/16" Diameter Accessory Holder - Black
DGF 469	Dichroic Glass Filter	T72BL	4-11/16" Diameter Barn Doors - Black †
DIFF 469	Diffusion Glass Lens	T40N¹	Monopoint

See specification sheet [D1.2.2](#) for details. Other accessories can be found on specification sheet [D1.2.0](#).

† Barn Doors accept Color Filters, Lenses, Snoot and Louvers.

Notes:

1 Add finish code to complete catalog number (Example: T40N WH).



TRAC-MASTER®

Classics

ROUND BACK CYLINDERS

T326, T327 and T328

PRODUCT DESCRIPTION

Round Back Cylinders with black or white baffles complement any decor.

Construction Drawn steel housing with steel yoke.

Lampholder Medium base porcelain with nickel plated copper screw shell.

Aiming 90° vertical aiming capability and 358° rotation • One locking knob provided.

Adapter Copper alloy contacts provide precise spring action - no arcing and will not take a set • True, positive electrical ground • On/off switch included • Patented embossed polarity arrows on bottom of adapter • Spring-loaded positive latch with embossed polarity arrows secures trac light to trac • "Pull-up" contact to up position for two-circuit application.

Labels UL listed, CSA certified.

Specifications subject to change without notice.

Line Voltage BR40/PAR38

Catalog Number	Baffle	Finish	Lamp
T328 BLB WH	Black	White	150W PAR38 or 120W BR40
T328 BLB BL	Black	Black	150W PAR38 or 120W BR40
T328 WHB WH	White	White	150W PAR38 or 120W BR40

ACCESSORIES

Cat. No.	Description	Cat. No.	Description
CGF 550	Color Glass Filter	T580BL	5-1/2" Diameter Accessory Holder - Black
CCLBL 550	Cube Cell Louver - Black	T40N ¹	Monopoint

See specification sheet [D1.2.2](#) for details. Other accessories can be found on specification sheet [D1.2.0](#).

Notes:

¹ Add finish code to complete catalog number (Example: T40N WH).

