



TRAC-MASTER®

Avant Garde

OPEN BACK SPOTLIGHTS

T196, T696, T362, T363 and T368

Project: _____

Fixture Type: _____

Location: _____

Contact/Phone: _____

PRODUCT DESCRIPTION

The clean, functional lines of the open back allows maximum adjustability. Open Back Spotlights relamp from back and have floating socket mount and on/off switch. The minimum profile with stylized yoke design is ideal for retail and commercial applications.

Construction Die formed steel.

Aiming 90° vertical aiming capability and 358° rotation.

Labels UL listed, CSA certified.

Specifications subject to change without notice.



Low Voltage MR16

Lamp 12V, 50W maximum MR16 GU5.3/GX5.3 bi-pin.

Socket Ceramic bi-pin.

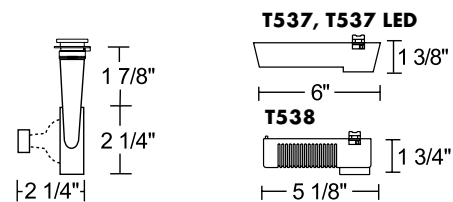
Transformer Must be ordered separately • Compatible with T537 or T538 12V electronic transformer for halogen lamps ([D1.2.1](#)) • Compatible with T537 LED universal 12V electronic transformer for LED or halogen lamps ([D1.2.5](#)) • Compatible with T539 12V electronic transformer for halogen lamps ([D1.2.0](#)) • Compatible with T543 12V magnetic transformer for LED or halogen lamps ([D1.2.0](#)).

Catalog Number	Finish	Lamp
T196 WH	White	50W MR16 max.
T196 BL	Black	50W MR16 max.
T196 SC	Satin Chrome	50W MR16 max.

ACCESSORIES

Cat. No.	Description	Cat. No.	Description
CGF 175	Color Glass Filter	HCLBL 175	Hexagonal Cell Louver - Black
DCCF 175	Dichroic Color Correction Filter	DIFF 175	Diffusion Glass Lens
DGF 175	Dichroic Glass Filter	UVF 175	UV Filter
SOLITE 175	Uniformity Lens (Solite)	LSPREAD 175	Linear Spread Glass Lens
PRISM 175	Prismatic Spread Glass Lens		

See specification sheet [D1.2.2](#) for details.



Low Voltage MR16

Lamp 12V, 75W maximum MR16 GU5.3/GX5.3 bi-pin.

Socket Ceramic bi-pin.

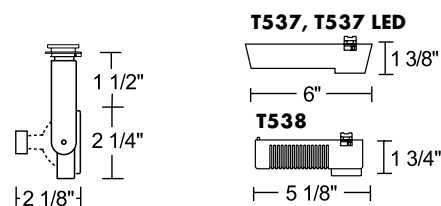
Transformer Must be ordered separately • Compatible with T537 or T538 12V electronic transformer for halogen lamps ([D1.2.1](#)) • Compatible with T537 LED universal 12V electronic transformer for LED or halogen lamps ([D1.2.5](#)) • Compatible with T539 12V electronic transformer for halogen lamps ([D1.2.0](#)) • Compatible with T543 12V magnetic transformer for LED or halogen lamps ([D1.2.0](#)).

Catalog Number	Finish	Lamp
T696 WH	White	75W MR16 max.
T696 BL	Black	75W MR16 max.

ACCESSORIES

Cat. No.	Description	Cat. No.	Description
CGF 175	Color Glass Filter	HCLBL 175	Hexagonal Cell Louver - Black
DCCF 175	Dichroic Color Correction Filter	DIFF 175	Diffusion Glass Lens
DGF 175	Dichroic Glass Filter	UVF 175	UV Filter
SOLITE 175	Uniformity Lens (Solite)	LSPREAD 175	Linear Spread Glass Lens
PRISM 175	Prismatic Spread Glass Lens		

See specification sheet [D1.2.2](#) for details.



TRAC-MASTER®

Avant Garde

OPEN BACK SPOTLIGHTS

T196, T696, T362, T363 and T368

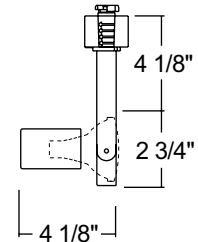
Line Voltage PAR20

Lamp 120V, 50W maximum PAR20 medium base.

Socket Medium base porcelain with nickel plated copper screw shell.

Juno Universal Trac Adapter Compatible with Juno Trac-Master 1 or 2-circuit systems or Juno Trac-Lites system
 • Copper alloy contacts provide precise spring action - no arcing and will not take a set • True, positive electrical ground • On/off switch included • Patented embossed polarity arrows on bottom of adapter • Spring-loaded positive latch with embossed polarity arrows secures trac light to trac • "Pull-up" contact to up position for two-circuit application.

Alternate TEK Trac Adapter Compatible with Juno TEK trac system • System specific and assembled to trac fixture
 • Integrally polarized construction to prevent reverse installation – only allows insertion in proper orientation
 • Rotary circuit selector enables simple switching between circuits • Integral on/off switch enables individual fixtures to be switched for servicing.



Catalog Number	Description	Finish	Lamp
T362 WH	Open Back w/Universal Trac Adapter	White	50W PAR20 max.
T362 BL	Open Back w/Universal Trac Adapter	Black	50W PAR20 max.
T362 SC	Open Back w/Universal Trac Adapter	Satin Chrome	50W PAR20 max.
T362 TEK WH	Open Back w/TEK Trac Adapter	White	50W PAR20 max.
T362 TEK BL	Open Back w/TEK Trac Adapter	Black	50W PAR20 max.
T362 TEK SC	Open Back w/TEK Trac Adapter	Satin Chrome	50W PAR20 max.

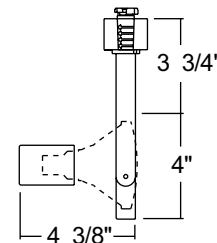
Line Voltage PAR30

Lamp 120V, 75W maximum PAR30 medium base.

Socket Medium base porcelain with nickel plated copper screw shell.

Adapters Refer to T362.

Catalog Number	Description	Finish	Lamp
T363 WH	Open Back w/Universal Trac Adapter	White	75W PAR30 max.
T363 BL	Open Back w/Universal Trac Adapter	Black	75W PAR30 max.
T363 SC	Open Back w/Universal Trac Adapter	Satin Chrome	75W PAR30 max.
T363 NAT	Open Back w/Universal Trac Adapter	Natural	75W PAR30 max.
T363 TEK WH	Open Back w/TEK Trac Adapter	White	75W PAR30 max.
T363 TEK BL	Open Back w/TEK Trac Adapter	Black	75W PAR30 max.
T363 TEK SC	Open Back w/TEK Trac Adapter	Satin Chrome	75W PAR30 max.
T363 TEK NAT	Open Back w/TEK Trac Adapter	Natural	75W PAR30 max.



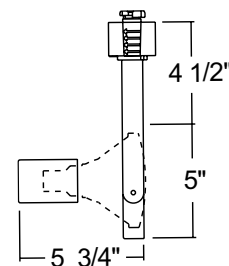
Line Voltage PAR38

Lamp 120V, 150W maximum PAR38 medium base.

Socket Medium base porcelain with nickel plated copper screw shell.

Adapters Refer to T362.

Catalog Number	Description	Finish	Lamp
T368 WH	Open Back w/Universal Trac Adapter	White	150W PAR38 max.
T368 BL	Open Back w/Universal Trac Adapter	Black	150W PAR38 max.
T368 SC	Open Back w/Universal Trac Adapter	Satin Chrome	150W PAR38 max.
T368 NAT	Open Back w/Universal Trac Adapter	Natural	150W PAR38 max.
T368 TEK WH	Open Back w/TEK Trac Adapter	White	150W PAR38 max.
T368 TEK BL	Open Back w/TEK Trac Adapter	Black	150W PAR38 max.
T368 TEK SC	Open Back w/TEK Trac Adapter	Satin Chrome	150W PAR38 max.
T368 TEK NAT	Open Back w/TEK Trac Adapter	Natural	150W PAR38 max.



ACCESSORIES

Cat. No.	Description	Cat. No.	Description
CGF 469	Color Glass Filter	CCLBL 469	Cube Cell Louver - Black
DCCF 469	Dichroic Color Correction Filter	DIFF 469	Diffusion Glass Lens
DGF 469	Dichroic Glass Filter	UVF 469	UV Filter
SOLITE 469	Uniformity Lens (Solite)	LSPREAD 469	Linear Spread Glass Lens
PRISM 469	Prismatic Spread Glass Lens		

See specification sheet [D1.2.2](#) for details.