

JUNO[®]

TRAC-MASTER[®]

Low Voltage

Project: _____

Fixture Type: _____

Location: _____

Contact/Phone: _____

12V ELECTRONIC TRANSFORMERS, LED-COMPATIBLE AND WITH QUICK JACK ADAPTER T537, T537QJ, and T538

PRODUCT SPECIFICATIONS

Transformer Compatibility and Construction

T537, T538: Low profile, contemporary housing design • Designed to accept Juno Trac-Master 12V AC halogen lampholders or pendants with a non-Quick Jack interface • Recommended for use with incandescent (halogen) lamps only • When using LED lamps, LED-compatible versions should be specified • Transformer may be used with Trac-Master or Trac-Lites Series trac (or designated monopoints) • Transformer output is short circuit protected.

T537QJ: Same as T537 above but compatible with Quick Jack lampholders and pendants.

T538: Same as T537 above but in a more classic, rectilinear housing style.

T537 LED: Similar to T537 above but designed using a Hatch RS 12-60M-LED transformer for LED compatibility • May be used with Juno low voltage bi-pin lampholders and LED lamps (by others) • Compatible with most 12VAC LED lamps – contact lamp manufacturer to confirm compatibility • May also be used with incandescent (halogen lamps).

T537QJ LED: Same as T537 LED above but compatible with Quick Jack lampholders and pendants.

Transformer Operating Environment Designed for 40,000 hour operating life with repeated switching in 40° C ambient and 90% relative humidity environment • Designed to withstand the intense heat produced by incandescent trac lighting • Tolerates sustained case temperatures of 100° C • All components meet rigid heat tolerance standards and pass over-temperature life tests.

Housing High impact polycarbonate housing • Integral on/off switch • Available in white, black or silver finishes.

Juno Universal Trac Adapter Universally compatible with both Trac-Master 1-circuit or 2-circuit trac, Trac-Lites trac, monopoints and special mountings • Also UL Recognized for use on ConTech[®] LT Series track • Copper alloy contacts provide precise spring action – no arcing and will not take a set • True, positive electrical ground • On /off switch included • Spring-loaded positive latch with embossed polarity arrows secures trac light to trac • Two-position power contact provided for two-circuit application.

Alternate GTYPE Trac Adapter Compatible with track systems based on GES type track, including Lithonia LT Commercial Track (not LTS type) • System specific and assembled to trac fixture • Two-position power contact provided for two-circuit application • Consult factory for additional information.

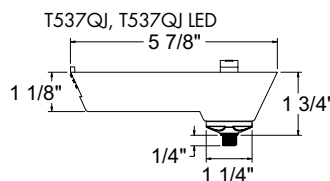
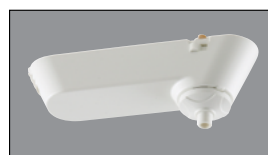
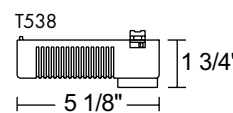
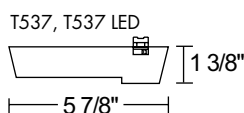
Alternate HTYPE Trac Adapter Compatible with track systems which use a H-type track adapter, including Lithonia LTS Decorative Track (not LT type) • System specific and assembled to trac fixture • Two-position power contact provided for two-circuit application • Consult factory for additional information.

Alternate LTYPE Trac Adapter Compatible with track systems which use a L-type track adapter • System specific and assembled to trac fixture • Two-position power contact provided for two-circuit application • Consult factory for additional information.

Transformer Agency Ratings UL or ETL approved for use in U.S. or Canada • FCC Certified to Class A noise limiting standards • Controls radio interference & provides quiet operation with or without dimming • Exceeds IEEE Line Transient Requirements • Provides superior spike protection.

Specifications subject to change without notice.

DIMENSIONS



ConTech is a registered trademark of ConTech Lighting.

AcuityBrands.

1300 S. Wolf Road • Des Plaines, IL 60018 • Phone (847) 827-9880 • Fax (847) 827-2925 • Visit us at www.acuitybrands.com/juno-trac
Printed in U.S.A. ©2017-2018 Acuity Brands Lighting, Inc. Rev. 05/16/18

TRAC-MASTER®

Low Voltage

12V ELECTRONIC TRANSFORMERS, LED-COMPATIBLE AND WITH QUICK JACK ADAPTER T537, T537QJ, and T538

ORDERING INFORMATION Ordering Examples: T537 WH, T537 GTYPE WH, T537 LED WH

Series	Mounting Adapter	LED Compatibility	Finish
T537 120V Input, 12V AC Output Low Profile Electronic Transformer	GTYPE G-Type Trac Adapter HTYPE H-Type Trac Adapter LTYPE L-Type Trac Adapter	LED LED Compatible	BL Black SL Silver WH White
T537QJ Same as T537 but compatible with Quick Jack fixtures			

ORDERING INFORMATION Ordering Examples: T537QJ WH, T537QJ GTYPE WH, T537QJ LED WH

Series	Mounting Adapter	LED Compatibility	Finish
T537QJ 120V Input, 12V AC Output Low Profile Electronic Transformer with Quick Jack Connector	GTYPE G-Type Trac Adapter HTYPE H-Type Trac Adapter LTYPE L-Type Trac Adapter	LED LED Compatible	BL Black SL Silver WH White

ORDERING INFORMATION Ordering Example: T538 WH

Series	Mounting Adapter Type	Finish
T538 120V Input Electronic Transformer	GTYPE G-Type Trac Adapter HTYPE H-Type Trac Adapter LTYPE L-Type Trac Adapter	BL Black SL Silver WH White

Engineering Data for T537, T537QJ & T538

Input	120VAC, .64A
Nominal Output	11.0 - 11.8V, 75 Watts (VA) Max. load
Operating Frequency	>20kHz
Power Factor	>95%
T.H.D.	15%
Operating Ambient Humidity	0-90% RH
Rated Average Life (with 75W lamp)	40,000 hours @ 120VAC input 40°C ambient

Third Party Qualifications:

FCC Certified under CFR, Title 47, Part 18, Classes A & B.
UL Listed, CSA Certified.
IEEE Line Transient Withstand as defined in Publication 587-1980, Category A.

Engineering Data for T537QJ LED & T537 LED

Input (T537 QJ LED)	120VAC, 0.52A
Input (T537 LED)	120VAC, 0.60A
Nominal Output	11.5V AC, 50 Watts (VA) Max. load
Operating Frequency	>20kHz
Power Factor	>95%
T.H.D.	<20%
Operating Ambient Humidity	0-95% RH
Rated Average Life (with 50W lamp)	40,000 hours @ 120VAC input 40°C ambient

Third Party Qualifications:

FCC Certified under CFR, Title 47, Part 18, Classes A & B.
ETL Certified for US & Canada.