

Juno® Flex 12™ Trac System

Flex 12's unique track construction combines a flexible insulating core that separates two flat aluminum conductors.

Key Features:

- Attractive satin aluminum finish
- Can be used in straight sections or field curved
- 25-amp capacity (12V or 24V) for long, economical runs up to 600 watts per circuit
- Available in 4' and 8' lengths
- Connectors that electrically and/or mechanically join track sections into longer runs

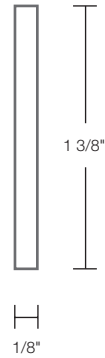


Flex 12™ Trac Sections

Low voltage track sections consisting of flexible, insulating center and conductive aluminum skin. Can be field cut and curved (see back page). 25-amp capacity.



Dimensions



Series	Description	Finish
TF 4FT	4' Track (Actual Length 48")	SL Silver
TF 8FT	8' Track (Actual Length 96")	SL Silver

End Cover



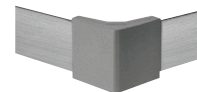
Optional vinyl-dipped sleeve protects end of trac. One End Cover per package.
TF30 SL

Connectors



Straight Connector

Electrically and/or mechanically joins two sections of trac. 25-amp capacity.
TF23 SL



Right Angle (90°) Connector

Electrically and/or mechanically joins two sections of trac at right angle (90°). 25-amp capacity. **TF24 SL**

Close-to-Ceiling Feed and Mini-Support Cylinders

Low profile electrical feed cylinder and mechanical mini-support cylinder. Spaces trac 2 1/4" from mounting surface. One electrical feed per circuit is required. Best suited for use in rigid ceiling applications.



Low Profile Electrical Feed Cylinder

With integral outlet box cover. 25-amp capacity. 5" diameter.
TF31 SL



Low Profile Mechanical Mini-Support Cylinder

With integral micro-canopy. Secures to mounting surface with toggle bolt (supplied) or 10-24 headless hanger screw (not supplied). 1 1/4" diameter. **TF32 SL**

Monopoints

For mounting over standard ceiling outlet boxes. Accepts all Flex 12™ spotlights and decorative pendants.



Monopoint with Transformer

With integral 12-volt, 50VA electronic transformer. 5" diameter. **TF540 SL**



Monopoint

For use with remote mounted transformer. 5" diameter.
TF40 SL

See specification sheets for recommended mounting spacings.