



# TRAC 12

Miniature Low Voltage Trac System

## MR16 SPOTLIGHTS

**TL109, TL116, TLP116, TL117, TL143,  
TL191, TL196 and TL296**

Project: \_\_\_\_\_

Fixture Type: \_\_\_\_\_

Location: \_\_\_\_\_

Contact/Phone: \_\_\_\_\_

### PRODUCT DESCRIPTION

A selection of distinctive miniature MR16 quartz lampholders provides high intensity display and accent lighting using small scale, high-styled trac lights.

**Socket** Ceramic bi-pin.

**Aiming** 90° vertical aiming capability and 358° rotation.

**Lens** Glass lens included with lampholder.

**Labels** UL listed, CSA certified.

Specifications subject to change without notice.

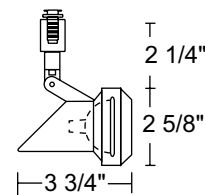
### Low Voltage MR16 Slant

| Catalog Number  | Description | Finish | Lamp                 |
|-----------------|-------------|--------|----------------------|
| <b>TL109 WH</b> | Slant       | White  | 50W MR16, 12V or 24V |
| <b>TL109 BL</b> | Slant       | Black  | 50W MR16, 12V or 24V |

#### ACCESSORIES

| Cat. No.          | Description                      | Cat. No.             | Description                        |
|-------------------|----------------------------------|----------------------|------------------------------------|
| <b>CGF 175</b>    | Color Glass Filter               | <b>DIFF 175</b>      | Diffusion Glass Lens               |
| <b>DCCF 175</b>   | Dichroic Color Correction Filter | <b>UVF 175</b>       | UV Filter                          |
| <b>DGF 175</b>    | Dichroic Glass Filter            | <b>LSPREAD 175</b>   | Linear Spread Glass Lens           |
| <b>SOLITE 175</b> | Uniformity Lens (Solite)         | <b>EYEBROWBL 175</b> | EyeBrow Accessory - Black          |
| <b>PRISM 175</b>  | Prismatic Spread Glass Lens      | <b>SNOOTBL 175</b>   | Snoot Accessory - Black            |
| <b>HCLBL 175</b>  | Hexagonal Cell Louver - Black    | <b>T74BL</b>         | 1-3/4" Diameter Barn Doors - Black |

See specification sheet [D1.2.2](#) for details.



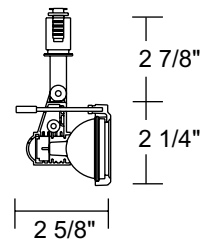
### Low Voltage MR16 Delta 200

| Catalog Number  | Description | Finish | Lamp                 |
|-----------------|-------------|--------|----------------------|
| <b>TL116 WH</b> | Delta 200   | White  | 50W MR16, 12V or 24V |
| <b>TL116 BL</b> | Delta 200   | Black  | 50W MR16, 12V or 24V |
| <b>TL116 SL</b> | Delta 200   | Silver | 50W MR16, 12V or 24V |

#### ACCESSORIES

| Cat. No.          | Description                      | Cat. No.           | Description                        |
|-------------------|----------------------------------|--------------------|------------------------------------|
| <b>CGF 175</b>    | Color Glass Filter               | <b>DIFF 175</b>    | Diffusion Glass Lens               |
| <b>DCCF 175</b>   | Dichroic Color Correction Filter | <b>UVF 175</b>     | UV Filter                          |
| <b>DGF 175</b>    | Dichroic Glass Filter            | <b>LSPREAD 175</b> | Linear Spread Glass Lens           |
| <b>SOLITE 175</b> | Uniformity Lens (Solite)         | <b>SNOOTBL 175</b> | Snoot Accessory - Black            |
| <b>PRISM 175</b>  | Prismatic Spread Glass Lens      | <b>T74BL</b>       | 1-3/4" Diameter Barn Doors - Black |
| <b>HCLBL 175</b>  | Hexagonal Cell Louver - Black    |                    |                                    |

See specification sheet [D1.2.2](#) for details.



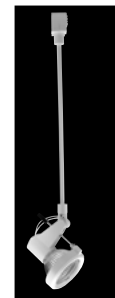
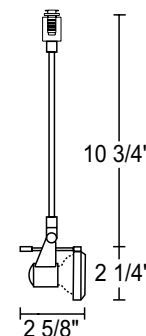
### Low Voltage MR16 Delta 200

| Catalog Number   | Description       | Finish | Lamp                 |
|------------------|-------------------|--------|----------------------|
| <b>TLP116 WH</b> | Delta 200 Pendant | White  | 50W MR16, 12V or 24V |
| <b>TLP116 BL</b> | Delta 200 Pendant | Black  | 50W MR16, 12V or 24V |
| <b>TLP116 SL</b> | Delta 200 Pendant | Silver | 50W MR16, 12V or 24V |

#### ACCESSORIES

| Cat. No.          | Description                      | Cat. No.           | Description                        |
|-------------------|----------------------------------|--------------------|------------------------------------|
| <b>CGF 175</b>    | Color Glass Filter               | <b>DIFF 175</b>    | Diffusion Glass Lens               |
| <b>DCCF 175</b>   | Dichroic Color Correction Filter | <b>UVF 175</b>     | UV Filter                          |
| <b>DGF 175</b>    | Dichroic Glass Filter            | <b>LSPREAD 175</b> | Linear Spread Glass Lens           |
| <b>SOLITE 175</b> | Uniformity Lens (Solite)         | <b>SNOOTBL 175</b> | Snoot Accessory - Black            |
| <b>PRISM 175</b>  | Prismatic Spread Glass Lens      | <b>T74BL</b>       | 1-3/4" Diameter Barn Doors - Black |
| <b>HCLBL 175</b>  | Hexagonal Cell Louver - Black    |                    |                                    |

See specification sheet [D1.2.2](#) for details.



**TRAC 12**

Miniature Low Voltage Trac System

**MR16 SPOTLIGHTS****TL109, TL116, TLP116, TL117, TL143,  
TL191, TL196 and TL296****Low Voltage MR16 Flyback**

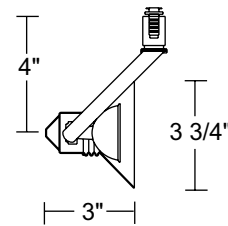
| Catalog Number | Description | Finish | Lamp                   |
|----------------|-------------|--------|------------------------|
| TL117 WH       | Flyback     | White  | 50W MR16CG, 12V or 24V |
| TL117 BL       | Flyback     | Black  | 50W MR16CG, 12V or 24V |

**ACCESSORIES**

| Cat. No.   | Description                      | Cat. No.    | Description  |
|------------|----------------------------------|-------------|--|
| CGF 200    | Color Glass Filter               | DIFF 200    | Diffusion Glass Lens                                     |
| DCCF 200   | Dichroic Color Correction Filter | UVF 200     | UV Filter  |
| DGF 200    | Dichroic Glass Filter            | LSPREAD 200 | Linear Spread Glass Lens                                 |
| SOLITE 200 | Uniformity Lens (Solite)         | T7400BL     | 2" Diameter Accessory Holder for MR16 - Black †          |
| PRISM 200  | Prismatic Spread Glass Lens      | T7400SA     | 2" Diameter Accessory Holder for MR16 - Satin Aluminum † |
| HCLBL 200  | Hexagonal Cell Louver - Black    |             |  |

See specification sheet [D1.2.2](#) for details.

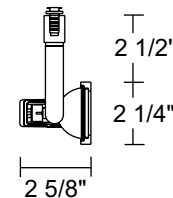
† Filters and lenses require accessory holder for installation.

**Low Voltage MR16 Notchback**

| Catalog Number | Description | Finish | Lamp                 |
|----------------|-------------|--------|----------------------|
| TL143 WH       | Notchback   | White  | 50W MR16, 12V or 24V |
| TL143 BL       | Notchback   | Black  | 50W MR16, 12V or 24V |

**ACCESSORIES**

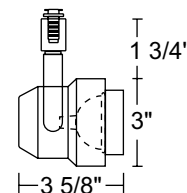
| Cat. No.   | Description                      | Cat. No.    | Description                   |
|------------|----------------------------------|-------------|-------------------------------|
| CGF 175    | Color Glass Filter               | HCLBL 175   | Hexagonal Cell Louver - Black |
| DCCF 175   | Dichroic Color Correction Filter | DIFF 175    | Diffusion Glass Lens          |
| DGF 175    | Dichroic Glass Filter            | UVF 175     | UV Filter                     |
| SOLITE 175 | Uniformity Lens (Solite)         | LSPREAD 175 | Linear Spread Glass Lens      |
| PRISM 175  | Prismatic Spread Glass Lens      |             |                               |

See specification sheet [D1.2.2](#) for details.**Low Voltage MR16 Studio II**

| Catalog Number | Description | Finish | Lamp                 |
|----------------|-------------|--------|----------------------|
| TL191 WH       | Studio II   | White  | 50W MR16, 12V or 24V |
| TL191 BL       | Studio II   | Black  | 50W MR16, 12V or 24V |
| TL191 SL       | Studio II   | Silver | 50W MR16, 12V or 24V |

**ACCESSORIES**

| Cat. No.   | Description                      | Cat. No.    | Description                   |
|------------|----------------------------------|-------------|-------------------------------|
| CGF 175    | Color Glass Filter               | HCLBL 175   | Hexagonal Cell Louver - Black |
| DCCF 175   | Dichroic Color Correction Filter | DIFF 175    | Diffusion Glass Lens          |
| DGF 175    | Dichroic Glass Filter            | UVF 175     | UV Filter                     |
| SOLITE 175 | Uniformity Lens (Solite)         | LSPREAD 175 | Linear Spread Glass Lens      |
| PRISM 175  | Prismatic Spread Glass Lens      |             |                               |

See specification sheet [D1.2.2](#) for details.

**TRAC 12**

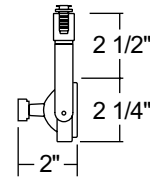
Miniature Low Voltage Trac System

**MR16 SPOTLIGHTS****TL109, TL116, TLP116, TL117, TL143,  
TL191, TL196 and TL296****Low Voltage MR16 Gimbal Ring**

| Catalog Number  | Description | Finish | Lamp                 |
|-----------------|-------------|--------|----------------------|
| <b>TL196 WH</b> | Gimbal Ring | White  | 50W MR16, 12V or 24V |
| <b>TL196 BL</b> | Gimbal Ring | Black  | 50W MR16, 12V or 24V |

**ACCESSORIES**

| Cat. No.          | Description                      | Cat. No.           | Description                   |
|-------------------|----------------------------------|--------------------|-------------------------------|
| <b>CGF 175</b>    | Color Glass Filter               | <b>HCLBL 175</b>   | Hexagonal Cell Louver - Black |
| <b>DCCF 175</b>   | Dichroic Color Correction Filter | <b>DIFF 175</b>    | Diffusion Glass Lens          |
| <b>DGF 175</b>    | Dichroic Glass Filter            | <b>UVF 175</b>     | UV Filter                     |
| <b>SOLITE 175</b> | Uniformity Lens (Solite)         | <b>LSPREAD 175</b> | Linear Spread Glass Lens      |
| <b>PRISM 175</b>  | Prismatic Spread Glass Lens      |                    |                               |

See specification sheet [D1.2.2](#) for details.**Low Voltage MR16 Gimbal Ring**

| Catalog Number  | Description | Finish       | Lamp                 |
|-----------------|-------------|--------------|----------------------|
| <b>TL296 WH</b> | Gimbal Ring | White        | 50W MR16, 12V or 24V |
| <b>TL296 BL</b> | Gimbal Ring | Black        | 50W MR16, 12V or 24V |
| <b>TL296 SC</b> | Gimbal Ring | Satin Chrome | 50W MR16, 12V or 24V |

**ACCESSORIES**

| Cat. No.          | Description                      | Cat. No.           | Description                   |
|-------------------|----------------------------------|--------------------|-------------------------------|
| <b>CGF 175</b>    | Color Glass Filter               | <b>HCLBL 175</b>   | Hexagonal Cell Louver - Black |
| <b>DCCF 175</b>   | Dichroic Color Correction Filter | <b>DIFF 175</b>    | Diffusion Glass Lens          |
| <b>DGF 175</b>    | Dichroic Glass Filter            | <b>UVF 175</b>     | UV Filter                     |
| <b>SOLITE 175</b> | Uniformity Lens (Solite)         | <b>LSPREAD 175</b> | Linear Spread Glass Lens      |
| <b>PRISM 175</b>  | Prismatic Spread Glass Lens      |                    |                               |

See specification sheet [D1.2.2](#) for details.