

Juno 6" WarmDim Retrofit LED Downlight Trim



All-in-one 6" LED Retrofit downlight trim with patented WarmDim® installs into existing 6" incandescent housings with medium base sockets or Juno IC23 LEDT24 and IC23R LEDT24 quick connect recessed housings. LED color temperature warms while dimming to emulate the dimming performance of traditional incandescent light sources. May be used in housings completely covered with insulation. Selection of interchangeable baffle and cone trim inserts can be changed in the field to customize the look of the product. Dimmable with most standard incandescent or electronic low voltage dimmers. Designed to provide 50,000 hours of life. 5 year limited warranty on LED components.

Example:
J6RL WD G4N DB 06LM 30K 90CRI 120 FRPC BWH

| Series | Dynamic Feature | Gen | Trim Style | Lumens | CCT | CRI | Voltage/Driver | Trim Finish |
|------------------------------------|-----------------|-----|------------------------|--------------------|--------------|-------|--|---|
| J6RL 6" Retrofit Downlight Trim | WD WarmDim® | G4N | DB Downlight Baffle | 06LM 600 Lumens | 30K 3000K | 90CRI | 120 FRPC 120V Only; Forward Phase/ELV Dimming | WWH White Baffle BWH Black Baffle |
| | | | DC Downlight Cone | 06LM 600 Lumens | 30K 3000K | 90CRI | 120 FRPC 120V Only; Forward Phase/ELV Dimming | CWH Clear Cone WWH White Cone HZZH Haze Cone WHZZH Wheat Haze Cone |

Juno 6" WarmDim Retrofit LED Eyeball Trim Module



All-in-one 6" LED Retrofit eyeball trim with patented WarmDim® installs into existing 6" incandescent housings with medium base sockets or Juno IC23 LEDT24 and IC23R LEDT24 quick connect recessed housings. LED color temperature warms while dimming to emulate the dimming performance of traditional incandescent light sources. May be used in housings completely covered with insulation. Adjustable eyeball design allows for 30° vertical adjustment. Field installable medium flood optic accessory available. Dimmable with most standard incandescent or electronic low voltage dimmers. Designed to provide 50,000 hours of life. 5 year limited warranty on LED components.

Example:
J6RLE WD G4N DB 06LM 30K 90CRI 120 FRPC WH

| Series | Dynamic Feature | Gen | Lumens | CCT | CRI | Voltage/Driver | Trim Finish |
|-----------------------------------|-----------------|-----|--------------------|--------------|-------|--|-------------|
| J6RLE 6" Retrofit Eyeball Trim | WD WarmDim® | G4N | 06LM 600 Lumens | 30K 3000K | 90CRI | 120 FRPC 120V Only; Forward Phase/ELV Dimming | WH White |

Compatible Housings

The J6RL WD and J6RLE WD retrofit modules are compatible with most 6" recessed housings measuring at least 5-1/4" high with an inside diameter between 6" and 6-3/4". Removal of the housing socket plate or socket mounting bracket may be required in order for the trim to fit properly. If housing does not have torsion spring brackets, the V6RLTRB accessory is required. Compatible housings include, but not limited to:

- Juno housings:** IC2 and TC2 Series, IC22 Series, IC23 Series, IC21 Series
- VuLite housings:** V6IC and V6TC Series
- Lithonia housings:** L7X and LC6 Series
- Halo housings:** H7 Series
- Thomas housings:** PS1 and PS3 Series
- Capri housings:** QL1 Series

Juno Downlight Trim Inserts

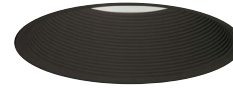
Interchangeable trim inserts for WarmDim LED retrofit downlight modules are offered in six beautiful finishes.



J6RLTRIM DB WWH
White Baffle



J6RLTRIM DC WWH
White Cone



J6RLTRIM DB BWH
Black Baffle



J6RLTRIM DC HZZH
Haze Cone



J6RLTRIM DC CWH
Clear Cone



J6RLTRIM DC WHZZH
Wheat Haze Cone

Accessories

| Catalog No. | Description |
|----------------|--|
| LEDOPTICG3 MFL | Medium Flood Optic (50°) (J6RLE only) |
| V6RLTRB | Torsion receiver bracket kit to install Juno Retrofit LED Trim Modules into housings that do not have torsion receiver brackets. |

Juno Dedicated LED Housings



Fixture Style: IC23 LEDT24
Description: 6" IC New Construction



Fixture Style: IC23R LEDT24
Description: 6" IC Remodel

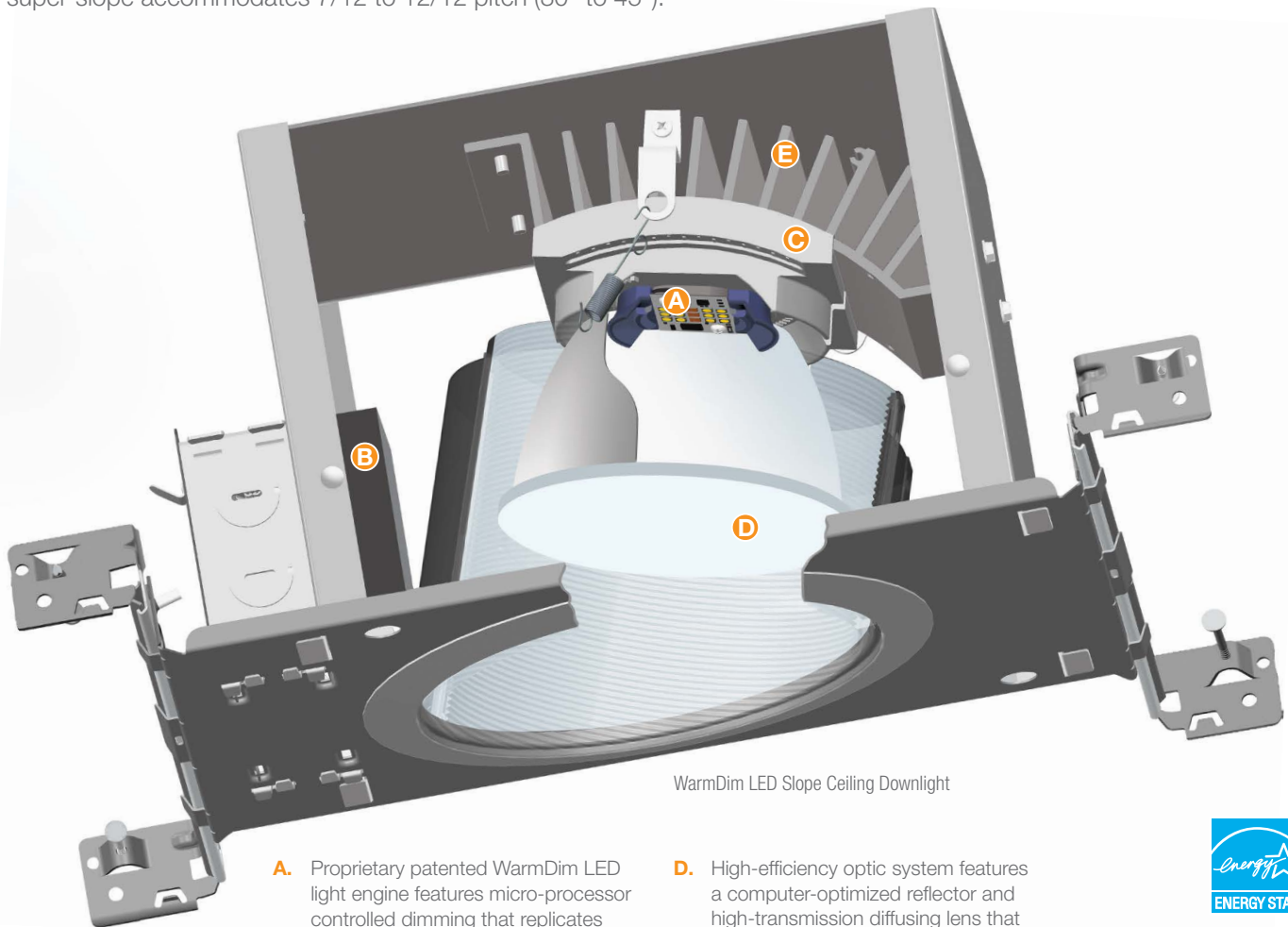


ENERGY STAR® and T24 certification is dependent on trim finish. See housing spec sheet for specific information for each trim.

Juno® WarmDim® LED Slope Ceiling Downlights



Juno slope and super-slope LED downlights were the industry's first recessed LED luminaires designed specifically for slope ceiling installations. Now, these 6-inch, IC-rated downlights are available with Juno WarmDim, providing the warmth and atmosphere of incandescent dimming while offering the energy efficiency and longevity of LED fixtures. They produce a brilliant 900 lumens from just 18 watts and are offered with open or lensed trims for new construction applications. Juno standard slope LED downlights accommodate ceilings with 2/12 to 6/12 pitch (9° to 27°); super-slope accommodates 7/12 to 12/12 pitch (30° to 45°).



- A.** Proprietary patented WarmDim LED light engine features micro-processor controlled dimming that replicates the warmth of incandescent dimming. Dims from 3000K CCT at full lumen output to a warm 2000K while maintaining 90 minimum CRI throughout the range. (Patent US 8,710,754)
- B.** Dedicated 120-volt LED driver is compatible with readily available incandescent, magnetic low-voltage, and electronic low-voltage dimmers.
- C.** Adjustable slider plate enables the LED light engine and reflector to be positioned perpendicular to the floor throughout the pitch range and includes 1/4-inch adjustment indicators for consistent fixture-to- fixture alignment.
- D.** High-efficiency optic system features a computer-optimized reflector and high-transmission diffusing lens that conceals the LEDs and produces uniform aperture luminance. Specifically designed for slope applications, the reflector provides optimum performance and obscures housing internals regardless of pitch angle.
- E.** Superior thermal management is achieved by integrating the extruded aluminum heat sink and cast aluminum slider plate directly into the housing, assuring remarkable LED longevity. Service life is rated at 50,000 hours with 70% lumen maintenance.



Juno 6" WarmDim Standard Slope Ceiling LED 2/12 to 6/12 Pitch (9° to 27°)



Dedicated LED, Air-Loc® sealed slope ceiling new construction housing with patented WarmDim®. LED color temperature warms while dimming to emulate the dimming performance of traditional incandescent light sources. IC rated construction housing can be completely covered with insulation. Fully sealed housing stops infiltration and exfiltration of air, reducing heating and air cooling costs without the use of additional gaskets. LED housing is designed to provide 50,000 hours of life and is compatible with standard Juno trims. 5 year limited warranty on LED components.

Example: IC926LED WD G4 09LM 30K 90CRI 120 FRPC

| Series | Dynamic Feature | Gen | Lumens | CCT | CRI | Voltage/Driver |
|--|-----------------------|-----------|---------------------------|------------------|--------------|--|
| IC926LED 6" Standard Slope Ceiling | WD WarmDim® | G4 | 09LM 900 Lumens | 30K 3000K | 90CRI | 120 FRPC 120V Only; Forward Phase/ ELV Dimming |

Juno 6" WarmDim Super Slope Ceiling LED 7/12 to 12/12 Pitch (30° to 45°)



Dedicated LED, Air-Loc® sealed super slope ceiling new construction housing with patented WarmDim®. LED color temperature warms while dimming to emulate the dimming performance of traditional incandescent light sources. IC rated construction housing can be completely covered with insulation. Fully sealed housing stops infiltration and exfiltration of air, reducing heating and air cooling costs without the use of additional gaskets. LED housing is designed to provide 50,000 hours of life and is compatible with standard Juno trims. 5 year limited warranty on LED components.

Example: IC928LED WD G4 09LM 30K 90CRI 120 FRPC

| Series | Dynamic Feature | Gen | Lumens | CCT | CRI | Voltage/Driver |
|---|-----------------------|-----------|---------------------------|------------------|--------------|--|
| IC928LED 6" Super Slope Ceiling | WD WarmDim® | G4 | 09LM 900 Lumens | 30K 3000K | 90CRI | 120 FRPC 120V Only; Forward Phase/ ELV Dimming |

Juno Slope Ceiling Trims

Open and lensed trims feature shadow-free, knife-edge rings that blend unobtrusively with sloped ceilings. Drawn from a selection of existing Juno trims, this collection offers an extensive variety of styles, colors, and finishes.

Standard Slope Open Trims



Baffle

- 614 BWH¹ Black Baffle
- 614 BSC¹ Black Baffle
- 614 BABZ¹ Black Baffle
- 614 BBL¹ Black Baffle
- 614 WWH White Baffle

Super Slope Open Trims



Baffle

- 604 BWH¹ Black Baffle
- 604 BSC¹ Black Baffle
- 604 BABZ¹ Black Baffle
- 604 BBL¹ Black Baffle
- 604 WWH White Baffle



Cone

- 620 CWH Clear Alzak®
- 620 BWH Black Alzak®
- 620 HZWH Haze
- 620 HZSC Haze
- 620 WWH White
- 620 WHZWH Wheat Haze
- 620 WHZABZ Wheat Haze



Cone

- 602 CWH Clear Alzak®
- 602 BWH¹ Black Alzak®
- 602 HZWH Haze
- 602 HZSC Haze
- 602 WWH White
- 602 WHZWH Wheat Haze
- 602 WHZABZ Wheat Haze

Lensed Trims



- Baffle, Regressed Frosted Dome Lens**
- 6330 WWH White



- Baffle, Regressed Frosted Dome Lens**
- 6033 WWH White

¹ Not ENERGY STAR® certified.

ENERGY STAR® and T24 certification is dependent on trim finish. See housing spec sheet for specific information for each trim.