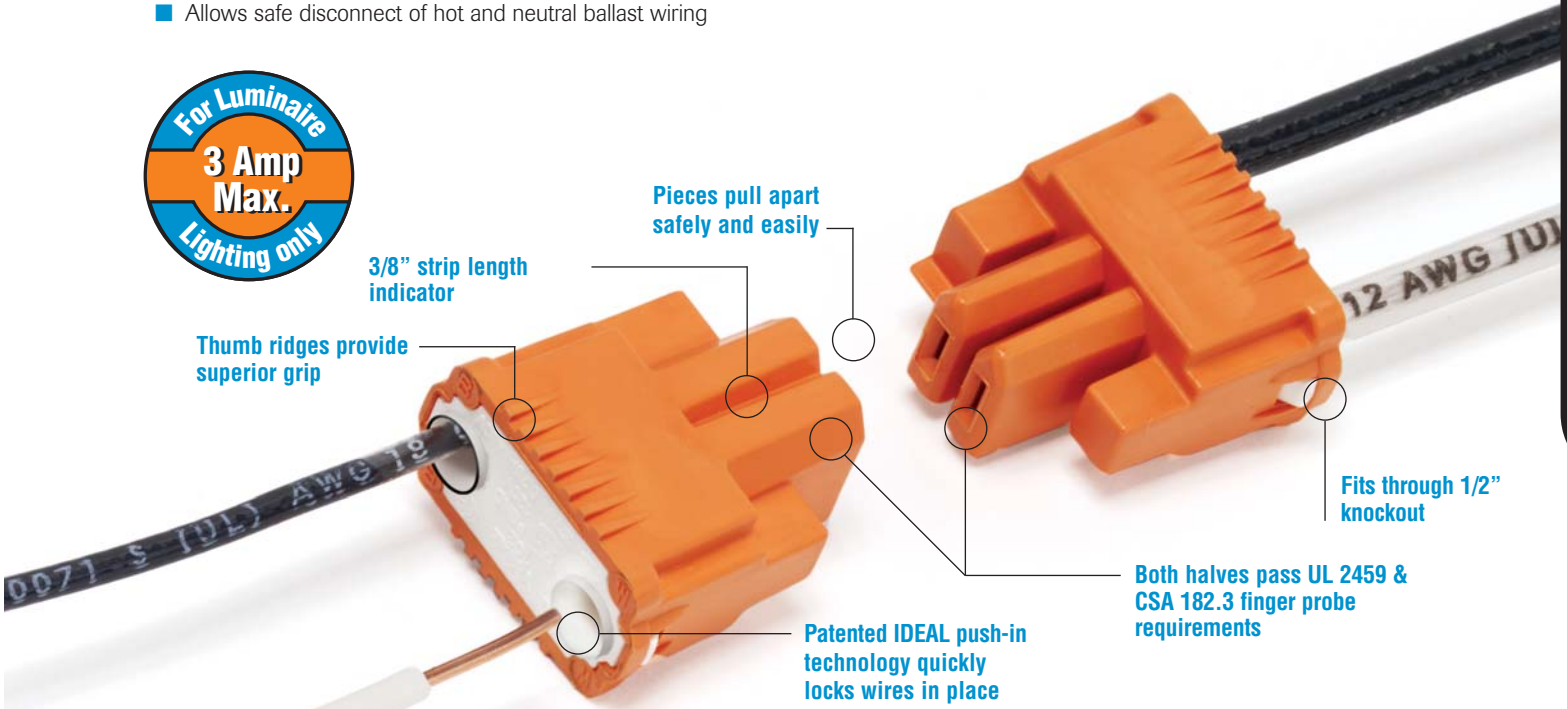
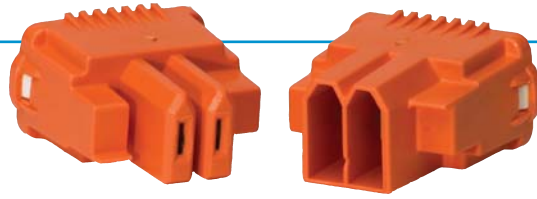


Wire Termination

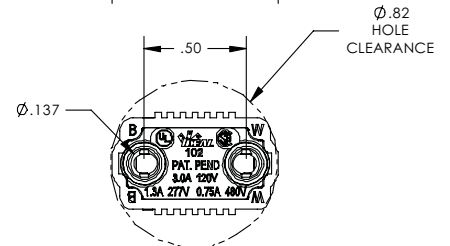
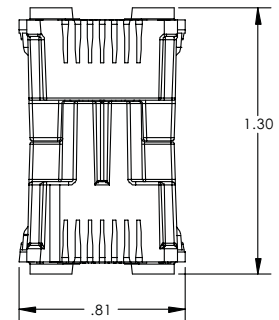
powerplug Luminaire Disconnect

- The first push-in disconnect to meet the new NEC and CEC code changes for non-residential fluorescent luminaires
- Perfect for OEM or retrofit lighting applications
- Meets UL and CSA finger-probe safety requirements
- Allows safe disconnect of hot and neutral ballast wiring



Both halves pass UL 2459 & CSA 182.3 finger probe requirements

Materials		Wire Range	
Housings:	Nylon	Solid	12 AWG – 18 AWG
Contacts:	Copper Alloy	Stranded	12 AWG – 14 AWG (19 strand or less)
Ratings		Stranded (Tin-Bonded)	12 AWG (19 strand or less) 14 AWG (19 strand or less) 16 AWG (26 strand or less) 18 AWG (16 strand or less)
Temperature:	105°C (221°F)	Agency Approvals	
Flammability:	UL 94V-0	UL 2459	CSA 182.3 RoHS Compliant
Current Interruption:	10 Cycles	Physical	
Max. Current Rating		Strip Length:	3/8" ± 1/16"
120V	3 Amps	Number of Circuits:	2 (3 circuit coming soon)
277V	1.3 Amps	Color:	Orange and White
347V	1 Amps	Mating/Unmating Force:	3-8 Pounds
480V	0.75 Amps	Patents Pending	
600V	0.60 Amps		



Listed Luminaire Disconnect 3HME

Model	Color	Wire Combination Range	Wire Combination Range (mm)	Quantity	Cat. No.
102	Orange	600V* 18 thru 12 AWG	600V* ,75mm ² to 24,0mm ²	Card of 25	30-372
				Jar of 75	30-382J
				Jar of 150	30-352J
				Box of 1,000	30-102

*1,000V maximum in fixtures and signs