

Toggle

A toggle hanger is used for hanging Fluorescent lights and other lighting applications. Different lengths are available, with WC2 cable. They are offered in three styles; Y shape, V shape and single strand. We also offer the Y shape as a kit.



Ordering Information

Item #	Code	Description	Safe Working Load*+	Quantity
30280	RWC2-120STG	WC2 10ft Single Cable with Toggle	10-75 lbs. (5-34 kg)	100/box
30278	RWC2-250STG	WC2 25ft Single Cable with Toggle	10-75 lbs. (5-34 kg)	100/box
30281	RWC2-60/18YP	WC2 Cable 60in -18in Y Toggle	10-75 lbs. (5-34 kg)	100/box
30284	RWC2-120/18YP	WC2 Cable 120in -18in Y Toggle (Available in Stainless Steel)	10-75 lbs. (5-34 kg)	100/box
30283	RWC2-180/18YP	WC2 Cable 180in -18in Y Toggle	10-75 lbs. (5-34 kg)	100/box
30267	RWC2L12VP	WC2 Cable Loop 12in V Toggle	10-75 lbs. (5-34 kg)	100/box
30270	RWC2L18VP	WC2 Cable Loop 18in V Toggle	10-75 lbs. (5-34 kg)	100/box
30194	RWC2YP5K	WC2 Cable 60in - 18in Y Toggle Kit (included 2 x 30281 + 2 x KL75)	10-75 lbs. (5-34 kg)	100/box
30202	RWC2YP10K	WC2 Cable 120in -18in Y Toggle Kit (included 2 x 30284 + 2 x KL75)	10-75 lbs. (5-34 kg)	100/box
30205	RWC2YP15K	WC2 Cable 180in -18in Y Toggle Kit (included 2 x 30283 + 2 x KL75)	10-75 lbs. (5-34 kg)	100/box

Stainless Steel also available.

*Safe Working Loads are based on a 5:1 Safety Factor.

+Hanging at angles will reduce the Safe Working Loads. Please see our "Effects of Hanging at Angles" table on page 17.

	Cable Size	
	WC2	
Locking Device	KL50	
	KL75	X
	KL100	
	KL150	
	KL200	
	Kwik-Grip 30210	X
	Kwik-Grip 30211	X
	Kwik-Grip 30212	X
	Kwik-Grip 30213	X
	Kwik-Grip 30214	X
	Kwik-Grip 30215	X
	Kwik-Grip 30216	X
	Kwik-Grip 30217	X
	Kwik-Grip 30218	X

Snap Hooks

A snap hook system is used for clipping onto lighting, cable basket and cable tray. It is available with either WC2 or WC3 cable. They are offered in three styles; Y shape, V shape and single strand. We also offer some variations as a kit.



	Cable Size	WC2	WC3
		KL50	
KL75	X		
KL100		X	
KL150			
KL200			
Kwik-Grip R30210	X		
Kwik-Grip 30211	X		
Kwik-Grip 30212	X		
Kwik-Grip 30213	X		
Kwik-Grip 30214	X		
Kwik-Grip 30215	X		
Kwik-Grip 30216	X		
Kwik-Grip 30217	X		
Kwik-Grip 30218	X		

Ordering Information				
Item#	Code	Description	Safe Working Load*+	Quantity
30070	RWC2-180SHK	WC2 Cable x 15ft. Single Snap Hook Cable	10-75 lbs. (5-34 kg)	100/box
30117	RWC2-60/18YHK	WC2 Cable 60in - 18in Y Snap Hook	10-75 lbs. (5-34 kg)	100/box
30118	RWC2-120/18YHK	WC2 Cable 120in - 18in Y Snap Hook	10-75 lbs. (5-34 kg)	100/box
30119	RWC2-180/18YHK	WC2 Cable 180in-18in Y Snap Hook	10-75 lbs. (5-34 kg)	100/box
30271	RWC3-60/18YHK	WC3 Cable 60in - 18in Y Snap Hook	25-150 lbs. (12-68 kg)	100/box
30269	RWC3-120/18YHK	WC3 Cable 120in - 18in Y Snap Hook	25-150 lbs. (12-68 kg)	100/box
30272	RWC3-180/18YHK	WC3 Cable 180in-18in Y Snap Hook	25-150 lbs. (12-68 kg)	100/box
30268	RWC3L18VHK	WC3 Cable Loop 18in V Snap Hook	25-150 lbs. (12-68 kg)	100/box
30201	RWC3YH10K	WC3 Cable 120in - 18in Y Snap Hook Kit (included 2 x R30269 + 2 x KL100)	25-150 lbs. (12-68 kg)	100/box

WC3 Single Cable Snap Hook Kits available upon request.

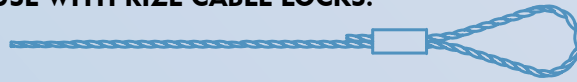
*Safe Working Loads are based on a 5:1 Safety Factor.

+Hanging at angles will reduce the Safe Working Loads. Please see our "Effects of Hanging at Angles" table on page 17.

Looped Cable

The Rize Looped Cable enhances the Kwik-Loc suspension system by the addition of a pre-looped cable end. Once the wire rope is pulled around the anchor point and through the looped end of the cable, it is already secured at one end, saving time at the job site. The remaining wire rope "drop" is passed through a channel in the Rize Kwik-Loc. Then, the wire rope is either wrapped around the equipment or inserted through a fastening point and back up into the second channel of the same cable lock. The locking teeth inside the cable lock engage the wire rope which secures the equipment in place.

TO ENSURE MAXIMUM SAFETY, USE ONLY WIRE ROPE SUPPLIED BY RIZE ENTERPRISES FOR USE WITH RIZE CABLE LOCKS.



		Cable Size			
		WC1	WC2	WC3	WC4
Locking Device	KL50	X			
	KL75		X		
	KL100			X	
	KL150				X
	KL200				
	Kwik-Grip 30210		X		
	Kwik-Grip 30211		X		
	Kwik-Grip 30212		X		
	Kwik-Grip 30213		X		
	Kwik-Grip 30214		X		
	Kwik-Grip 30215		X		
	Kwik-Grip 30216		X		
	Kwik-Grip 30217		X		
	Kwik-Grip 30218		X		

Ordering Information				
Item #	Code	Description	Safe Working Load*+	Qty
30195	RLC1-60	WC1 Looped Cable 60in Drop	5-35 lbs. (3-10 kg)	100/ box
30196	RLC1-120	WC1 Looped Cable 120in Drop	5-35 lbs. (3-10 kg)	100/ box
30197	RLC1-180	WC1 Looped Cable 180in Drop	5-35 lbs. (3-10 kg)	100/ box
30198	RLC1-300	WC1 Looped Cable 300in Drop	5-35 lbs. (3-10 kg)	50/ box
30223	RLC2-60	WC2 Looped Cable 60in Drop	10-75 lbs. (5-34 kg)	100/ box
30224	RLC2-120	WC2 Looped Cable 120in Drop	10-75 lbs. (5-34 kg)	100/ box
30225	RLC2-180	WC2 Looped Cable 180in Drop	10-75 lbs. (5-34 kg)	100/ box
30227	RLC2-300	WC2 Looped Cable 300in Drop	10-75 lbs. (5-34 kg)	50/ box
30228	RLC3-60	WC3 Looped Cable 60in Drop	25-150 lbs. (12-68 kg)	100/ box
30229	RLC3-120	WC3 Looped Cable 120in Drop	25-150 lbs. (12-68 kg)	100/ box
30230	RLC3-180	WC3 Looped Cable 180in Drop	25-150 lbs. (12-68 kg)	100/ box
30232	RLC3-300	WC3 Looped Cable 300in Drop	25-150 lbs. (12-68 kg)	50/ box
30233	RLC4-60	WC4 Looped Cable 60in Drop	25-250 lbs. (12-114 kg)	100/ box
30234	RLC4-120	WC4 Looped Cable 120in Drop	25-250 lbs. (12-114 kg)	100/ box
30235	RLC4-180	WC4 Looped Cable 180in Drop	25-250 lbs. (12-114 kg)	100/ box
30237	RLC4-300	WC4 Looped Cable 300in Drop	25-250 lbs. (12-114 kg)	50/ box
30199	RWC2L5K	WC2 X 5ft Looped Cable w /KL75 (includes 2 x 30223 + 2 x KL75)	10-75 lbs. (5-34 kg)	100/ box
30260	RWC2L10K	WC2 X 10ft Looped Cable w/ KL75 (includes 2 x 30224 + 2 x KL75)	10-75 lbs. (5-34 kg)	100/ box
30261	RWC2L15K	WC2 X 15ft Looped Cable w/ KL75 (includes 2 x 30225 + 2 x KL75)	10-75 lbs. (5-34 kg)	100/ box

Also available in Stainless Steel.

*Safe Working Loads are based on a 5:1 Safety Factor.

+Hanging at angles will reduce the Safe Working Loads. Please see our "Effects of Hanging at Angles" table on page 17.

Kwik-Stud

There are many ways to suspend lighting and equipment from concrete or steel structures. One of the most common methods is to screw threaded rod into internally threaded expansion anchors. Sizing the threaded rod and using washers and nuts to complete support structures is time consuming. Kwik-Studs used with Kwik-Loc cable locks can greatly decrease labor time for constructing suspension systems.

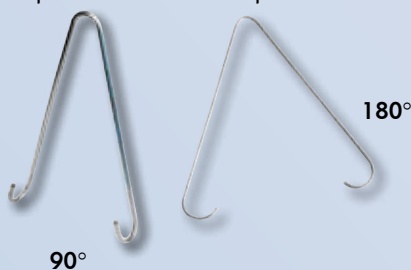
The Kwik-Stud is a heavy duty grade 5 hex head bolt with one end of a super strong aircraft rated cable attached. The bolt is threaded into the expansion anchor without putting stress on the cable. This makes for a much safer and tighter connection. The other end of the cable, in conjunction with the cable lock, is used to attach the object being supported.

		Cable Size	
		WC3	WC4
Locking Device	KL50		
	KL75		
	KL100	X	
	KL150		X
	KL200		
	Kwik-Grip R30210		
	Kwik-Grip 30211		
	Kwik-Grip 30212		
	Kwik-Grip 30213		
	Kwik-Grip 30214		
	Kwik-Grip 30215		
	Kwik-Grip 30216		
	Kwik-Grip 30217		
	Kwik-Grip 30218		

Ordering Information				
Item#	Code	Description	Safe Working Load* +	Quantity
30248	KSA1405-332	Kwik-Stud - 1/4 in Threaded Bolt x 5ft WC3 Cable Assembly	25-150 lbs. (12-68 kg)	10/bag; 10 bags/box
30249	KSA1410-332	Kwik-Stud - 1/4 in Threaded Bolt x 10ft WC3 Cable Assembly	25-150 lbs. (12-68 kg)	10/bag; 10 bags/box
30250	KSA1415-332	Kwik-Stud - 1/4 in Threaded Bolt x 15ft WC3 Cable Assembly	25-150 lbs. (12-68 kg)	10/bag; 10 bags/box
30251	KSA1425-332	Kwik-Stud - 1/4 in Threaded Bolt x 25ft WC3 Cable Assembly	25-150 lbs. (12-68 kg)	5/bag; 10 bags/box
30252	KSA3805-18	Kwik-Stud - 3/8 in Threaded Bolt x 5ft WC4 Cable Assembly	25-250 lbs. (12-114 kg)	10/bag; 10 bags/box
30253	KSA3810-18	Kwik-Stud - 3/8 in Threaded Bolt x 10ft WC4 Cable Assembly	25-250 lbs. (12-114 kg)	10/bag; 10 bags/box
30254	KSA3815-18	Kwik-Stud - 3/8 in Threaded Bolt x 15ft WC4 Cable Assembly	25-250 lbs. (12-114 kg)	10/bag; 10 bags/box
30255	KSA3825-18	Kwik-Stud - 3/8 in Threaded Bolt x 25ft WC4 Cable Assembly	25-250 lbs. (12-114 kg)	5/bag; 10 bags/box
30256	KSA3805ZC	Kwik-Stud - 3/8 in Threaded Bolt x 5ft Cable w/Zip-Clip	25-220 lbs. (12-100 kg)	10/bag; 10 bags/box
30257	KSA3810ZC	Kwik-Stud - 3/8 in Threaded Bolt x 10ft Cable w/Zip-Clip	25-220 lbs. (12-100 kg)	10/bag; 10 bags/box
30258	KSA3815ZC	Kwik-Stud - 3/8 in Threaded Bolt x 15ft Cable w/Zip-Clip	25-220 lbs. (12-100 kg)	10/bag; 10 bags/box
30259	KSA3825ZC	Kwik-Stud - 3/8 in Threaded Bolt x 25ft Cable w/Zip-Clip	25-220 lbs. (12-100 kg)	5/bag; 10 bags/box
All Kwik-Studs include drop-in and nut.				
*Safe Working Loads are based on a 5:1 Safety Factor.				
+Hanging at angles will reduce the Safe Working Loads. Please see our "Effects of Hanging at Angles" table on page 17.				

V Clip Kit

The V Clip is used for suspension of Fluorescent pendant mount lights. It can be packaged with single loop or double loop pre-cut cable in kits for linear lighting. The V Clip can also be purchased in bulk quantities with our starter kits.



Ordering Information			
Item #	Code	Description	Qty
30276	RWC2-180/18YLVK	V Clip Kit Includes: 1-KL75, 1-WC2 Cable 18" Y drop with looped cable ends, 2-V Clips	100/box
30032	RWC2-180LVK	90° V Clip Kit	100/box

90°

180°

Cat Loc

Used in conjunction with the SKL200, the Cat Loc can be used to suspend lights and signs from a horizontal cable. This aesthetically pleasing system is fast and easy and will help you install lighting where no anchor points are available.

Once the Cat Loc is installed on the horizontal cable you are able to move it and lock it in place at the ground level by twisting the cable. This saves time on the work site by not having to go back up to the unit to move and lock in place.

The Cat Loc has a working load of 75 lbs (34 kgs) and is sold with the cable already attached to simplify installation.



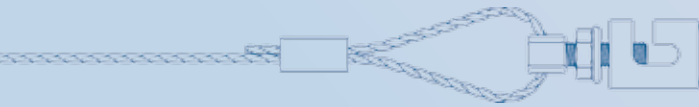
SKL200



Features:

- A work load limit of 75 lbs (34 kgs)
- Sold with the cable pre-attached

Ordering Information			
Item #	Code	Description	Quantity
30188	RCL4M	Cat Loc w/4m Cable Length	10/bag; 10 bags/box
30189	RCL1M	Cat Loc w/1m Cable Length	10/bag; 10 bags/box



Con-Lock

Suspension systems typically use threaded rod with washers and nuts to construct a support structure. Sizing, cutting and assembling the rods to the complementary parts and fastening them to an anchor point can be very time consuming.

The Con-Lock system is designed for the suspension of all static loads into all concrete types including slagged, cracked, slab and even hollow pot. The Con-Lock is designed to use a 1/4inch or 6mm drill bit. Then tapped into place with a standard hammer, no claw back of the anchor is needed for installation. There is no need for any other tools.

With a working load limit of 100 lbs (50 kgs) the Con-Lock can be used for most electrical installations. The Con-Lock is sold with the cable preattached in different lengths.

Ordering Information			
Item #	Code	Description	Quantity
30175	RMCL2M	Con-Lock w/2m Cable Length	10/bag; 10 bags/box
30176	RMCL3M	Con-Lock w/3m Cable Length	10/bag; 10 bags/box
30177	RMCL4M	Con-Lock w/4m Cable Length	10/bag; 10 bags/box
30178	RMCL5M	Con-Lock w/5m Cable Length	10/bag; 10 bags/box



MGR Hook

The MGR Hook is used on WC1 or WC2 cable. It is used to hang pictures or signage. The MGR Hook can also be used in conjunction with the Cat-lock suspension system.



Ordering Information			
Item #	Code	Description	Quantity
30041	MGRHook	Snap Hook for use with WC1 & WC2 Cable	100/box

Kwik-Grips

Kwik-Grips are accessory hardware used for hanging architectural lighting with cable. Included in this group are various cable couplers as well as cable grippers. Kwik-Grips are sold 100 per box.



<p>Item #: 30215 Code: 1CC1420</p> <p>Threaded 1/4in-20 Female 1-Piece Cable Coupler</p>	<p>Item #: 30216 Code: 2CC1420</p> <p>Threaded 1/4in-20 Female 2-Piece Cable Coupler</p>	<p>Item #: 30217 Code: 2CCS1420</p> <p>1/4in-20 Female Bottom Piece 2-piece Slotted Cable Coupler</p>
<p>Item #: 30212 Code: BEG141P</p> <p>Bottom Exit Gripper w/Safety Nut WC2 & WC3 Cable 1/8in-20 IP Male</p>	<p>Item #: 30213 Code: BEG381P</p> <p>Bottom Exit Gripper w/Safety Nut WC2 & WC3 Cable 3/8in-20 IP Male</p>	<p>Item #: 30214 Code: SEGSCC</p> <p>Side Exit Gripper w/Safety Nut WC2 Cable Slotted for Cross Cable</p>
<p>Item #: 30211* Code: SEG1420</p> <p>Side Exit Gripper w/Safety Nut WC2 Cable 1/4in-20 Female</p>	<p>Item #: 30218 Code: 1CCS141P</p> <p>Threaded 1/4in-20 IP Female Slotted Cable Coupler</p>	<p>Item #: 30210 Code: BEG1420</p> <p>Bottom Exit Gripper w/Safety Nut WC2 Cable 1/4in-20 Male</p>

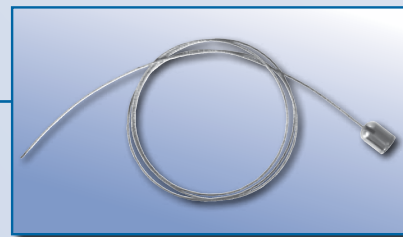
*30211 also available with 8/32in bottom screw.
For more options and information, please see price book.

Kwik-Grips Cables

Kwik-Grip Cables are pre-cut cables available in various lengths and are used for hanging lighting. Several different hardware fittings are attached to the ends of the cable while any plain ends are fuse cut to preserve the end shape.

WC2 Cable Assembly

WC2 Galvanized Cable Assembly w/ Fuse Cut on one end and #1 die cast stop (.185 in OD) on other end.



5:1 Working Load

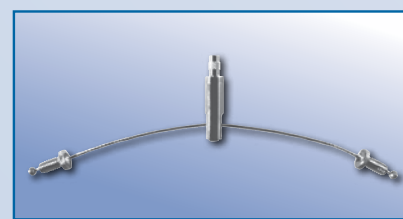
WC2 Cable: 10-75 lbs. (5-34 kg)

Ordering Information

Item #	Code	Description	Qty
30310	RWC2-50DS	WC2 Cable with #1 Stop/50in Length	100/box
30311	RWC2-120DS	WC2 Cable with #1 Stop/120in Length	100/box
30312	RWC2-250DS	WC2 Cable with #1 Stop/250in Length	100/box

Crosscables with Threaded Studs

WC2 Galvanized Crosscables w/ Captive 1/4"-20 Threaded Studs



5:1 Working Load

WC2 Cable: 10-75 lbs. (5-34 kg)

Ordering Information

Item #	Code	Description	Qty
30315	RWC2-08CCTS	WC2 Crosscables w/1/4in-20 Threaded Stud/8in Length	100/box
30316	RWC2-12CCTS	WC2 Crosscables w/ 1/4in-20 Threaded Stud/12in Length	100/box
30317	RWC2-18CCTS	WC2 Crosscables w/ 1/4in-20 Threaded Stud/18in Length	100/box
30318	RWC2-24CCTS	WC2 Crosscables w/ 1/4in-20 Threaded Stud/24in Length	100/box

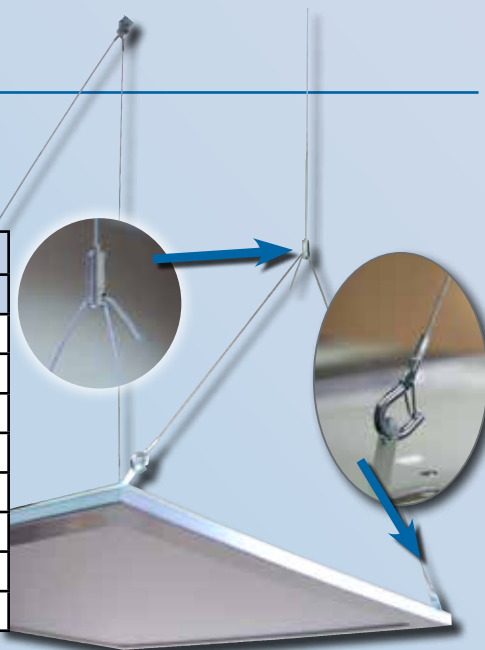
Cross cables with toggle ends available upon request.

PL Hanger Kit

The PL Hanger is a light hanger with a Y Snap Hook Cable available in different lengths. It is made out of nickel plated brass. It comes with 2 nickel plated Snap Hooks to attach to the light. 75 lb. working load limit.

Ordering Information

Item #	Code	Description	Qty
30086	PLH1	PL Hanger WC2x5' W/24" Toggle	100/box
30586	PLH2	PL Hanger WC2x5' W/Toggle	100/box
30579	PLH3	RWC2CC-60/9Y Hook 3 Hook/Grip	100/box
30179	PLH4	RWC2CC-60/9Y Hook	100/box
30580	PLH6	RWC2CC-60/18Y Hook	100/box
30180	PLH6	RWC2CC/18Y Hook	100/box
30184	PLH7	PL Hanger WC2x5' W/24" CC	100/box
30584	PLH8	RWC2PL 24Y Hook 1/16 W/Side	100/box



Canopy Kits

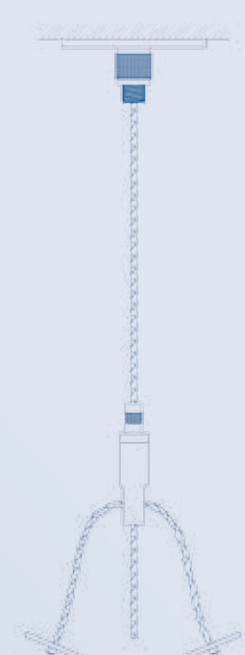
Rize is pleased to offer a new range of Canopy Kits that are available in both feed and non feed versions. Rize Canopy Kits are supplied with all the parts needed to hang your fixture, from the canopy to the cable and Kwik Grip. These can be supplied with different lengths of cable and different types of Kwik Grips, some of which you will find here. Coiled cable is also available upon request.

Non Feed Kits

Non feed kits are not supplied with power cables and do not need to be attached to the junction box. The canopy cover will only have one hole in it to attach the cable coupler.

Feed Kits

Feed kits are normally mounted to the junction box and are supplied with a SJT cord that will come through the canopy. They are also supplied with a strain relief bushing and a two piece cable coupler.



Ordering Information			
Item #	Code	Description	Quantity
30240	CK1650N	WC2 Cable - 50in No Feed Canopy Kit	100/box
30241	CK1650F	WC2 Cable - 50in Feed Canopy Kit	100/box
30242	CK16150N	WC2 Cable - 150in No Feed Canopy Kit	100/box
30243	CK16150F	WC2 Cable - 150in Feed Canopy Kit	100/box
30244	CK165018CN	18in Cross Cable Non-Feed Canopy Kit 50in WC2 Cable	1 kit
30245	CK165018CF	18in Cross Cable Feed Canopy Kit 50in WC2 Cable	1 kit
30246	CK16150-18CN	18in Cross Cable Non-Feed Canopy Kit 150in WC2 Cable	1 kit
30247	CK16150-18CF	18in Cross Cable Feed Canopy Kit 150in WC2 Cable	1 kit

Three-Legged Hanger Kit

The Three-Legged Hanger is perfect for LED round lights, available in feed kit form. It is available in different lengths legs in chrome, black and white finishes. 75 lb. working load limit.

Ordering Information			
Item #	Code	Description	Qty
30654	TLH	CC850/24-16P 12NK CL	100/box



Starter Kits

Rize Starter Kits include everything you need to get started and finished early on the job. Their large labels also makes them ideal for use on a Rize product display.

INCLUDES:

- 1 Roll of Cable
- 100 Kwik-Locs
- 1 Custom Cable Counter Lid & Bucket
- 1 Cable Cutter

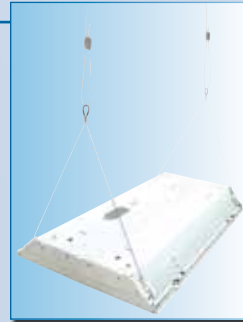


Ordering Information			
Item #	Code	Description	Qty
30398	KL75SK	English Starter Kit w/counter KL75 (WC2 wire)	1 kit
30394	KL100SK	English Starter Kit w/counter KL100 (WC3 wire)	1 kit

Cable Kits

Toggle Kits

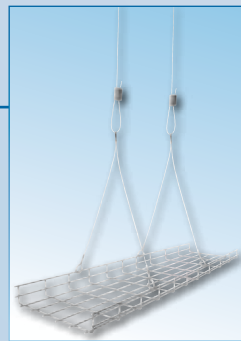
Ordering Information			
Item #	Code	Description	Quantity
30194	RWC2Y-P5K	WC2 Cable 60in - 18in Y Toggle Kit (included 2 x 30281 + 2 x KL75)	100/box
30202	RWC2Y-P10K	WC2 Cable 120in -18in Y Toggle Kit (included 2 x R30284 + 2 x KL75)	100/box
30205	RWC2Y-P15K	WC2 Cable 180in -18in Y Toggle Kit (included 2 x 30283 + 2 x KL75)	100/box



5:1 Working Load
WC2 Cable: 10-75 lbs. (5-34 kg)

Snap Hook Kits

Ordering Information			
Item#	Code	Description	Quantity
30201	RWC3Y-H10K	WC3 Cable 120in -18in Y Snap Hook Kit (included 2 x 30269 + 2 x KL75)	100/box



5:1 Working Load
WC3 Cable: 25-150 lbs. (12-68 kg)

Cable Kits

Looped Cable Kits

Ordering Information			
Item #	Code	Description	Quantity
30199	RWC2L5K	WC2 X 5ft Looped Cable w/ KL75	100/box
30260	RWC2L10K	WC2 X 10ft Looped Cable w/ KL75	100/box
30261	RWC2L15K	WC2 X 15ft Looped Cable w/ KL75	100/box

5:1 Working Load
WC2 Cable: 10-75 lbs. (5-34 kg)



Looped Cable Kits with Zip-Clip

Ordering Information			
Item #	Code	Description	Quantity
30331	ZCWR05	Zip-Clip Lock w/ 5ft Looped Cable	100/box
30332	ZCWR10	Zip-Clip Lock w/ 10ft Looped Cable	100/box
30333	ZCWR15	Zip-Clip Lock w/ 15ft Looped Cable	100/box
30334	ZCWR25	Zip-Clip Lock w/ 25ft Looped Cable	50/box

5:1 Working Load
WC3 Cable: 25-220 lbs. (12-100 kg)



V Clip Kit

Ordering Information			
Item #	Code	Description	Quantity
30276	RWC2-180/18YLVK	V Clip Kit Includes: 1-KL75, 1-WC2 Cable 18" Y drop with looped cable ends, 2-V Clips	100/box
30032	RWC2-180LVK	90° V Clip Kit	100/box



Kwik-Stud Kits

Ordering Information			
Item#	Code	Description	Quantity
30256	KSA3805ZC	Kwik-Stud - 3/8 in Threaded Bolt x 5ft Cable w/Zip-Clip	100/box
30257	KSA3810ZC	Kwik-Stud - 3/8 in Threaded Bolt x 10ft Cable w/Zip-Clip	100/box
30258	KSA3815ZC	Kwik-Stud - 3/8 in Threaded Bolt x 15ft Cable w/Zip-Clip	100/box
30259	KSA3825ZC	Kwik-Stud - 3/8 in Threaded Bolt x 25ft Cable w/Zip-Clip	50/box

All Kwik-Studs include drop-in and nut

5:1 Working Load
WC3 Cable: 25-220 lbs. (12-100 kg)

