

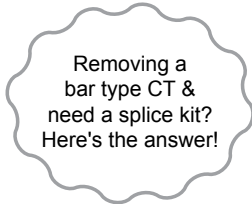
# CT JUMPER KIT

## Model #D-JP-CT

- Specifically designed to jumper out CT's in services where CT's are no longer required (ex. as utility moves metering to supply transformer from inside CT cabinet). Unit is free standing with base, insulator mounts and copper bus.

### Option

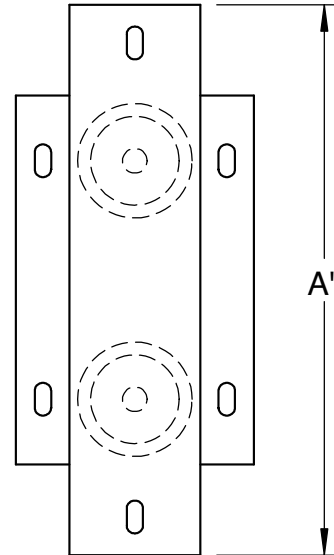
- Bus link only without base



Model #	Amps	Max Volts	Bus Size A (")
D-JP-CT-225	225	600	9 <sup>3</sup> / <sub>8</sub>
D-JP-CT-400	400	600	9 <sup>3</sup> / <sub>8</sub>
D-JP-CT-600	600	600	11 <sup>1</sup> / <sub>2</sub>
D-JP-CT-800	800	600	11 <sup>1</sup> / <sub>2</sub>
D-JP-CT-1200	1200	600	11 <sup>1</sup> / <sub>2</sub>



17-03



Model #D-JP-CT-400 Shown