



# Flex DC™

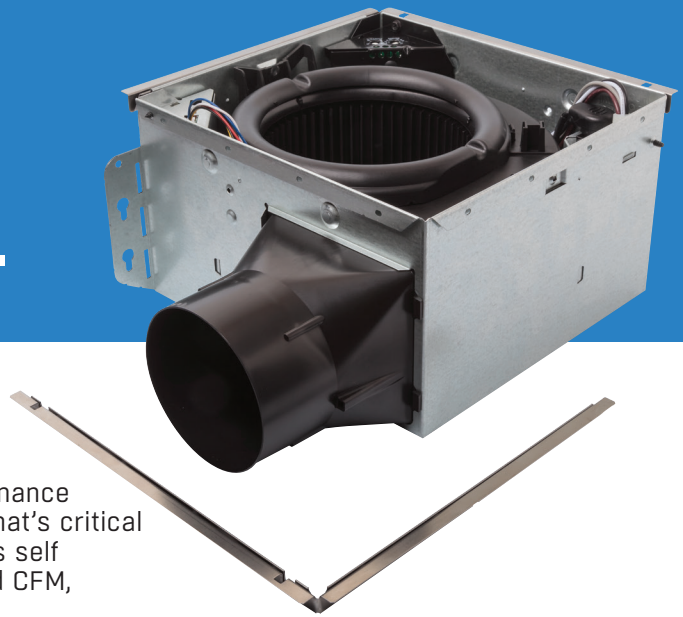
Most flexible.  
Most efficient.



## The Flex DC™ was built to give you what matters most.

- Selectable DC motor allows right-sizing ventilation for any size room.
- 50% more airtight than standard ventilation fans to help meet rigorous codes and standards.
- Snap-fit Flange Kit will cover the edges of the cutout for a more professional finish and a tighter, leak-free seal.
- Quiet fan operation that has a sone level less than 1.0 at all CFM speeds.

# Flex DC™ simplifies the way you work.



## Efficient Brushless Motor Design

Smart, brushless DC motor technology ensures performance requirements are met, regardless of static pressure. That's critical when longer duct runs can affect fan performance. This self-regulating technology auto-corrects to deliver specified CFM, and that helps avoid callbacks.

## Twice the ENERGY STAR® Efficiency Standard

Flex DC™ continues to save money long after installation. The brushless DC motor achieves 90% efficiency so you can feel good about letting it run while keeping the air more comfortable.

## Flex DC™ at a glance

- Choose LED fan/light or fan models with or without Sensaire® humidity sensing technology.
- Sensaire® Sense on Rise technology on fan model AE50110DCS.
- Dimmable, LED lighting on the AE50110DCL.
- TrueSeal™ damper technology creates an airtight seal from inside the housing.
- 4" round duct connector compatible with any Broan duct increaser.
- UL Listed for use over bathtub or shower when connected to a GFCI protected branch circuit.
- Type IC, fits 2" x 6" and larger construction.

## NEW Snap-fit Flange Kit

Both new construction installation and retrofit upgrades just got easier. Add the flange by simply snapping it on the side of the fan housing or go flangeless.

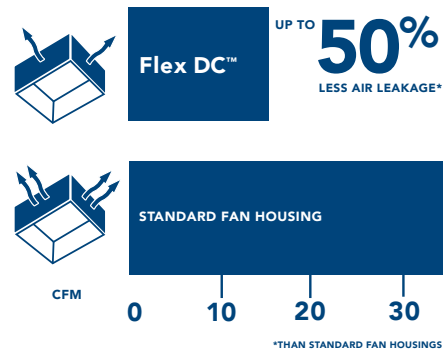


## Switch between 50, 80 or 110 CFM

You'll have fewer fans to inventory and the right size at installation. Switch the CFM to meet room requirements as well as ASHRAE 62.2 for spot and dwelling unit ventilation.

## Flex DC™ Specifications

Model	Description	Selectable CFM	Sones at		
			50 CFM	80 CFM	110 CFM
AE50110DC	FAN	50-80-110	<0.3	0.4	0.9
AE50110DCL	FAN WITH LED LIGHT	50-80-110	<0.3	0.4	0.9
AE50110DCS	HUMIDITY SENSING FAN	50-80-110	<0.3	0.4	0.9
AE50110DCF	FINISH PACK (PACK OF 4 UNITS)	50-80-110	<0.3	0.4	0.9
A000HFKT	HOUSING PACK WITH OPTIONAL SNAP-FIT FLANGE KIT (PACK OF 4 UNITS)				



Broan.ca

Venmar Ventilation ULC, 550 Lemire Blvd, Drummondville, Canada J2C 7W9 1-877-896-1119

