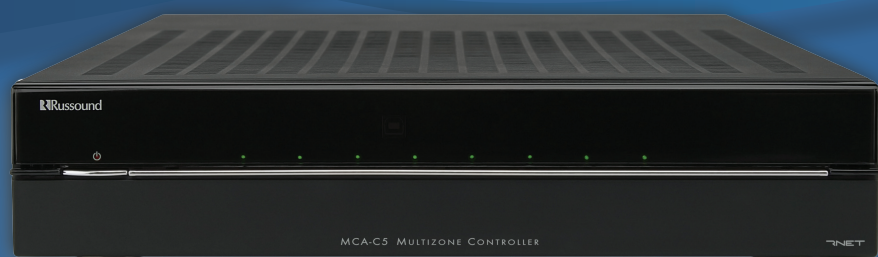


Series System

superior multiroom
audio starts here



C-Series MCA-C5

8 source/8 zone controller with built in RDS AM/FM tuner 40 watt x 2 channel digital amp zones 1-6. Apple app available for easy wireless control expandable up to 48 zones in the home.

All the power and flexibility you'll ever need are found in Russound "audio everywhere" systems and components. None more exemplary than the C5. Start here and build your customers' dream whole-house solution. Add your choice of keypad and wireless user interface apps. It's all here. Take a look.

Acclaim Thin Bezel Speakers



RSA-61

15° Angled 2-Way Ceiling Speaker

Recommended Power:

5-80 Watts

Tweeter:

1" Pivoting PEI

Woofers:

6 1/2" Vacuum Form Polypropylene



RSA-62

15° Angled 2-Way Ceiling Speaker

Recommended Power:

5-100 Watts

Tweeter:

1" Pivoting Silk - Ferrofluid Cooled

Woofers:

6 1/2" IMPP Ribbed Cone



RSA-63

15° Angled 2-Way Ceiling Speaker

Recommended Power:

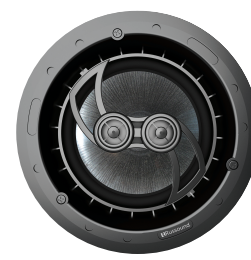
5-120 Watts

Tweeter:

1" Pivoting Teteron - Ferrofluid Cooled

Woofers:

6 1/2" Kevlar



RSF-61T

Single-Point, Dual Voice Coil, Twin Tweeter Ceiling Speaker

Recommended Power:

5-120 Watts

Tweeter:

2 x .75" Pivoting Silk - Ferrofluid cooled

Woofers:

6 1/2" IMPP Ribbed Cone



Round Grill

3175-534287 RSG-R round



RSF-61

2-Way Ceiling Speaker

Recommended Power:

5-80 Watts

Tweeter:

3/4" Pivoting PEI

Woofers:

6 1/2" Vacuum Form Polypropylene



RSF-62

2-Way Ceiling Speaker

Recommended Power:

5-90 Watts

Tweeter:

1" Pivoting Silk - Ferrofluid cooled

Woofers:

6 1/2" Polypropylene Cone



RSF-63

2-Way Ceiling Speaker

Recommended Power:

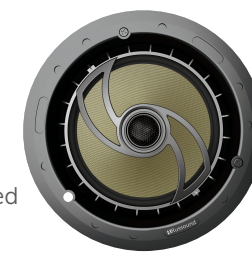
5-100 Watts

Tweeter:

1" Pivoting Silk - Ferrofluid Cooled

Woofers:

6 1/2" IMPP Ribbed Cone



RSF-64

2-Way Ceiling Speaker

Recommended Power:

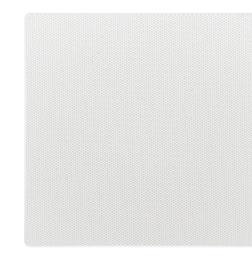
5-120 Watts

Tweeter:

1" Pivoting Teteron - Ferrofluid Cooled

Woofers:

6 1/2" Kevlar



Square Grill

3175-533990 RSG-S square



audio
everywhere

2013 Featured Products