

Outdoor Speakers & Speaker Accessories

Outdoor audio performance that blends into any landscape and withstands the elements. The cast enclosure is made from a glass-reinforced resin to provide a sturdy, waterproof cabinet with low acoustic resonance for better sound.

89 dB (1W @ 1m), 10-100W, 8 ohms. Dimensions: 14" W x 10" H x 9.25" D (35.6 x 25.4 x 23.5 cm)

8" OutBack Rock Speakers

5R82 2-Way Rock Speakers

Shipping Weight 11 lbs (4.95 kg)

3165-533464 5R82-G Gray Granite
3165-533471 5R82-S Sandstone
3165-533600 5R82-W Weathered Granite

5R82S Single-Point-Stereo

Shipping Weight 11.2 lbs (5.04 kg)

3165-533495 5R82S-G Gray Granite
3165-533501 5R82S-S Sandstone
3165-533617 5R82S-W Weathered Granite



Gray Granite

Sandstone

Weathered Granite

Rough-In Speaker Brackets



In-Ceiling

- 6" 3901-530722 SB-C67
- 6" 3901-531811 SB-C67-6P 6 Pack
- 8" 3901-530739 SB-C80
- 8" 3901-531828 SB-C80-6P 6 Pack

In-Wall

- 6.5" 3901-530746 SB-W60
- 6.5" 3901-531835 SB-W60-6P 6 Pack
- 3901-530760 SB-W80
- 3901-531859 SB-W80-6P 6 Pack

Acclaim 7 Series 8" 3-way In-Wall

- 3901-530791 SB-7LCR
- 3901-531880 SB-7LCR-6P 6 Pack

Acclaim 7 Series 8" 3-way In-Wall

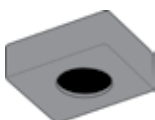
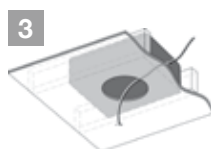
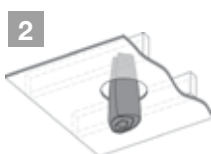
- 3901-530777 SB-W83
- 3901-531866 SB-W83-6P 6 Pack

Acclaim 7 Series Fixed Tilt

- 3901-532795 SB-FT50
- 3901-532801 SB-FT50-6P 6 Pack

Flexbox Back Boxes

Flexbox speaker back boxes reduce background noise, provide a moisture barrier, diffuse distortion and improve sound quality. The flexible construction allows for easy installation in retrofit or new construction settings. Both models are flame retardant and meet ASTM E119 and UL 263/ NFPA 251 (1-hour) and ASTM E84/NFPA 70 standards.



FBC1-FR In-Ceiling

- 1" (25 mm) nominal thickness, proprietary composite
- STC Rating: 32, Flame Spread: 23
- Smoke Density: 30 (ASTM E84/ NFPA 70)
- Thermal Value: R 4.2
- -40° F to 350° F (-40° C to 177° C)
- Fire Rating: CLASS 1 Fire Rated ASTM E119 /NFPA 251 and UL 263 for 1 Hour Fire Rating

Dimensions: 14" W x 6" D x 17.5" H (355 x 152 x 445 mm)
Weight: 6.7 lbs (3 kg)
3801-531286 FBC1-FR



FBW1-FR In-Wall

- 1" (25 mm) nominal thickness, proprietary composite
- STC Rating: 32, Flame Spread: 23
- Smoke Density: 30 (ASTM E84/ NFPA 70)
- Thermal Value: R 4.2
- -40° F to 350° F (-40° C to 177° C)
- Fire Rating: CLASS 1 Fire Rated ASTM E119 /NFPA 251 and UL 263 for 1 Hour Fire Rating

Dimensions: 14" W x 3.65" D x 16.5" H (368 x 89 x 406 mm)
Weight: 5.4 lb (2.4 kg)
3801-531262 FBW1-FR