

# Outdoor Speakers & Speaker Accessories

Outdoor audio performance that blends into any landscape and withstands the elements. The cast enclosure is made from a glass-reinforced resin to provide a sturdy, waterproof cabinet with low acoustic resonance for better sound.

89 dB (1W @ 1m), 10-100W, 8 ohms. Dimensions: 14" W x 10" H x 9.25" D (35.6 x 25.4 x 23.5 cm)

## 8" OutBack Rock Speakers

### 5R82 2-Way Rock Speakers

Shipping Weight 11 lbs (4.95 kg)

3165-533464 5R82-G Gray Granite  
3165-533471 5R82-S Sandstone  
3165-533600 5R82-W Weathered Granite

### 5R82S Single-Point-Stereo

Shipping Weight 11.2 lbs (5.04 kg)

3165-533495 5R82S-G Gray Granite  
3165-533501 5R82S-S Sandstone  
3165-533617 5R82S-W Weathered Granite



Gray Granite

Sandstone

Weathered Granite

## Rough-In Speaker Brackets



### In-Ceiling

6" 3901-530722 SB-C67  
6" 3901-531811 SB-C67-6P 6 Pack  
8" 3901-530739 SB-C80  
8" 3901-531828 SB-C80-6P 6 Pack

### In-Wall

6.5" 3901-530746 SB-W60  
6.5" 3901-531835 SB-W60-6P 6 Pack  
3901-530760 SB-W80  
3901-531859 SB-W80-6P 6 Pack

### Acclaim 7 Series 8" 3-way In-Wall

3901-530791 SB-7LCR  
3901-531880 SB-7LCR-6P 6 Pack

### Acclaim 7 Series 8" 3-way In-Wall

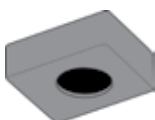
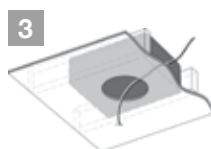
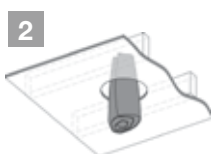
3901-530777 SB-W83  
3901-531866 SB-W83-6P 6 Pack

### Acclaim 7 Series Fixed Tilt

3901-532795 SB-FT50  
3901-532801 SB-FT50-6P 6 Pack

## Flexbox Back Boxes

Flexbox speaker back boxes reduce background noise, provide a moisture barrier, diffuse distortion and improve sound quality. The flexible construction allows for easy installation in retrofit or new construction settings. Both models are flame retardant and meet ASTM E119 and UL 263/ NFPA 251 (1-hour) and ASTM E84/NFPA 70 standards.



### FBC1-FR In-Ceiling

- 1" (25 mm) nominal thickness, proprietary composite
- STC Rating: 32, Flame Spread: 23
- Smoke Density: 30 (ASTM E84/ NFPA 70)
- Thermal Value: R 4.2
- -40° F to 350° F (-40° C to 177° C)
- Fire Rating: CLASS 1 Fire Rated ASTM E119 /NFPA 251 and UL 263 for 1 Hour Fire Rating

Dimensions: 14" W x 6" D x 17.5" H (355 x 152 x 445 mm)  
Weight: 6.7 lbs (3 kg)  
3801-531286 FBC1-FR



### FBW1-FR In-Wall

- 1" (25 mm) nominal thickness, proprietary composite
- STC Rating: 32, Flame Spread: 23
- Smoke Density: 30 (ASTM E84/ NFPA 70)
- Thermal Value: R 4.2
- -40° F to 350° F (-40° C to 177° C)
- Fire Rating: CLASS 1 Fire Rated ASTM E119 /NFPA 251 and UL 263 for 1 Hour Fire Rating

Dimensions: 14" W x 3.65" D x 16.5" H (368 x 89 x 406 mm)  
Weight: 5.4 lb (2.4 kg)  
3801-531262 FBW1-FR