

C-2000™ Contactors & Starters Enclosures

NEMA 1 Enclosure ①

Contactor Size	Contactors and Starters				Reversing Contactors and Starters		Wye-Delta Starters	
	No CPT Lift-Off Cover		With CPT Ⓞ Lift-Off Cover		With/Without CPT Ⓞ Hinged Cover		With/Without CPT Ⓞ Hinged Cover	
	Catalog No.	List Price, GO-10C2	Catalog No.	List Price, GO-10C2	Catalog No.	List Price, GO-10C2	Catalog No.	List Price, GO-10C2
5-25 Hp contactors (CL00, CL01, CL02, CL25, CL04, CL45)	CLXE1A	\$20.00	CLXE1D	\$29.00	CLXE1G	\$140.00	CLXE1G	\$140.00
30-50 Hp contactors (CL06, CL07, CL08)	CLXE1B	33.00	CLXE1E	47.00	CLXE1H	192.00	CLXE1L	268.00
60-75 Hp contactors (CL09, CL10)	CLXE1C	58.00	CLXE1F	69.00	CLXE1H	192.00	CLXE1L	268.00

NEMA 12/3R Enclosure ① ③

Contactor Size	Contactors and Starters				Reversing Contactors and Starters				Wye-Delta Starters	
	No CPT Hinged Cover		With CPT Ⓞ Hinged Cover		No CPT Hinged Cover		With CPT Ⓞ Hinged Cover		With/Without CPT Ⓞ Hinged Cover	
	Catalog No.	List Price, GO-10C2	Catalog No.	List Price, GO-10C2	Catalog No.	List Price, GO-10C2	Catalog No.	List Price, GO-10C2	Catalog No.	List Price, GO-10C2
5-25 Hp contactors (CL00, CL01, CL02, CL25, CL04, CL45)	CLXE2A	\$ 90.00	CLXE2C	\$142.00	CLXE2C	\$142.00	CLXE2E	\$159.00	CLXE2G	\$211.00
30-75 Hp contactors (CL06, CL07, CL08, CL09, CL10)	CLXE2B	122.00	CLXE2D	168.00	CLXE2D	168.00	CLXE2F	213.00	CLXE2H	388.00

NEMA 4 Enclosure ①

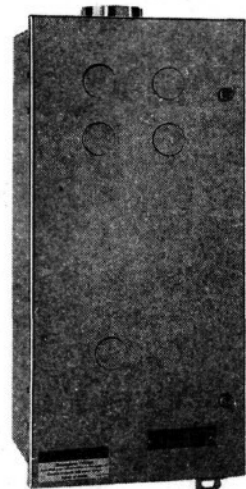
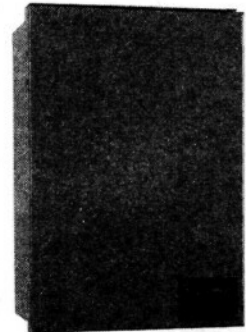
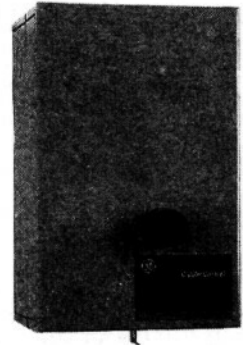
Contactor Size	Contactors and Starters				Reversing Contactors and Starters				Wye-Delta Starters	
	No CPT Hinged Cover		With CPT Ⓞ Hinged Cover		No CPT Hinged Cover		With CPT Ⓞ Hinged Cover		With/Without CPT Ⓞ Hinged Cover	
	Catalog No.	List Price, GO-10C2	Catalog No.	List Price, GO-10C2	Catalog No.	List Price, GO-10C2	Catalog No.	List Price, GO-10C2	Catalog No.	List Price, GO-10C2
5-25 Hp contactors (CL00, CL01, CL02, CL25, CL04, CL45)	CLXE4A	\$326.00	CLXE4C	\$343.00	CLXE4C	\$343.00	CLXE4E	\$537.00	CLXE4E	\$537.00
30-75 Hp contactors (CL06, CL07, CL08, CL09, CL10)	CLXE4B	346.00	CLXE4D	478.00	CLXE4D	478.00	CLXE4F	589.00	CLXE4H	994.00

- ① Enclosures are suitable for AC controlled contactors, starters and reversers, and wye-delta starters. For devices with front-mounted accessories and DC control, contact GE Customer Service at 1-800-GE-1-STOP. Enclosures are not sized for front-mounted accessories. Includes externally operated reset button kit to be field installed as required.
- ② Standard capacity (50 VA) Cat. No. CR308XT1 * A and extra capacity (150 VA) Cat. No. CR308XT1 * B (listed on page 3-20).
- ③ Type 12/3R enclosures have hole locaters for both pilot devices and reset. For 3R, application plug must be removed.

References:

- Instructions
- GEH-5521 Enclosures CLXE1G-CLXE1L
- GEH-5522 NEMA 1 Lift-Off Enclosures
- GEH-5523 CLXR11, 12 Reset Push Button
- GEH-5524 CLXR21, CKXR11, 12 Reset Button
- GEH-5525 CLXP-B, C Start/Stop Push Button
- GEH-5526 CL NEMA 12/3R Enclosures
- GEH-5527 CL NEMA 4 Enclosures

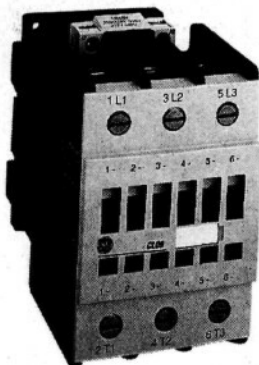
- Overload Relays pages 3-8, 3-9
- Accessories pages 3-10 to 3-16
- Enclosures pages 3-17 to 3-19
- Technical Data pages 3-36 to 3-44





C-2000™ 3-Pole Contactors

Nonreversing and Reversing
AC Controlled



5-75 Hp (460V) AC

To complete the contactor catalog number, replace * in the catalog number with the appropriate digit from the Coil Selection table.

AC-3 Max. Amps @ 460V	Single-Phase-HP 60 Hz		Three-Phase-HP 60 Hz				kW 50 Hz	Aux. Contacts (A600, Q600)	Coil Volts	Nonreversing		Reversing ①	
	115V	230V	200V	230V	460V	575V				Catalog No.	List Price, GO-10C2	Catalog No.	List Price, GO-10C2
10	0.5	1.5	3	3	5	7.5	4	1NO	AC	CL00A310T*	\$ 86.00	LAR00A*	\$ 247.00
13.8	0.75	2	3	3	7.5	10	5.5	1NO	AC	CL01A310T*	109.00	LAR01A*	293.00
17.5	1	3	5	5	10	15	7.5	1NO	AC	CL02A310T*	124.00	LAR02A*	323.00
22	1.5	3	5	7.5	15	15	11	1NO②	AC	CL25A310T*	138.00	LAR25A*	351.00
32	2	5	10	10	20	25	16	1NO	AC	CL04A310M*	157.00	LAR04A*	419.00
34	3	5	10	10	25	25	18.5	1NO②	AC	CL45A310M*	173.00	LAR45A*	451.00
48	3	7.5	15	15	30	40	22	1NO-③ 1NC	AC	CL06A311M*	200.00	LAR06A*	545.00
62	5	10	20	20	40	50	30	1NO-③ 1NC	AC	CL07A311M*	240.00	LAR07A*	625.00
68	5	15	20	25	50	60	37	1NO-③ 1NC	AC	CL08A311M*	295.00	LAR08A*	735.00
80	7.5	15	25	30	60	75	45	1NO-③ 1NC	AC	CL09A311M*	333.00	LAR09A*	861.00
96	10	20	30	40	75	75	55	1NO-③ 1NC	AC	CL10A311M*	475.00	LAR10A*	1,145.00

- ① Reversing contactor consists of two (2) contactors, a mechanical interlock (BEL02) with built-in NC cross electrical contact, power wiring cross electrical wiring and holding interlock.
- ② **Nonreversing:** A 1NO front-mounted auxiliary contact block is supplied (unassembled) with contactors that begin with CL25 and CL45. Add suffix "S" to catalog number for 1NO-1NC side auxiliary (assembled), add \$11.00 GO-10C2 to list price (example: **CL45A310MJS**, list price \$173.00 + \$11.00 = \$184.00 GO-10C2).
Reversing: Reversing contactors with prefixes LAR25 and LAR45 supplied with 1NO front-mounted holding interlock mounted on each contactor. Add suffix "S" to catalog number for 1NO-1NC side auxiliary (assembled), add \$22.00 GO-10C2 to list price (example: **LAR25AJS**, list price \$351.00 + \$22.00 = \$373.00 GO-10C2).
- ③ **Nonreversing:** A 1NO and 1NC front-mounted auxiliary contact block are supplied (unassembled) with contactors that begin with CL06, CL07, CL08, CL09, and CL10. Add suffix "S" to catalog number for 1NO-1NC side auxiliary (assembled), no addition in price adder.
Reversing: Reversing contactors with prefixes LAR06, LAR07, LAR08, LAR09, and LAR10 supplied with 1NO and 1NC front-mounted auxiliary on each contactor. Add suffix "S" to catalog number for 1NO-1NC side auxiliary, no additional price adder.

* Coil Selection Table

ac Voltage		* Coil Suffix
60 Hz	50 Hz	
24	24	1
48	42	F
120	110	J
208	—	L
277	220/230	N
240	—	S
480	380/400	U
—	415	W
600	500	Y

Note: Additional coils available, see page 3-16.

References:

- Instructions
- GEH-6223 CL00-CL25 Contactors
- GEH-6224 CL03-CL45 Contactors
- GEH-6225 CL05-CL08 Contactors
- GEH-6226 CL09-CL10 Contactors

- Overload Relays pages 3-8, 3-9
- Accessories pages 3-10 to 3-16
- Enclosures pages 3-17 to 3-19
- Technical Data pages 3-36 to 3-44