

3-Position Knob- & Lever-Operated Selector Switches



Selection Process

| | | | | | | |
|-----------------------|---|--|---|---|---|---------------|
| Select operator below | + | Select contact block(s) from back cover fold-out | + | Select nameplate, if required, from pages 36-38 | = | Complete unit |
| | | | | | | |

Operators

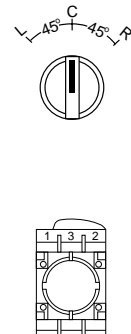
Replace **asterisk (*)** in catalog number with cam code from cams table below.
 Replace **dagger (†)** in catalog number with color code from colors table below.

| Style | Handle | Maintained | List Price, | Spring Return L⇒C | Spring Return C⇐R | Spring Return L⇒C⇐R | List Price, |
|---------------------------|-------------|-------------|-------------|-------------------|-------------------|---------------------|-------------|
| | | Catalog No. | GO-10GC | Catalog No. | Catalog No. | Catalog No. | GO-10GC |
| Polished Chrome | Knob | P9CSM*0† | \$14.50 | P9CSM*1† | P9CSM*5† | P9CSM*3† | \$16.50 |
| | Black Lever | P9CSV*0N | 14.50 | P9CSV*1N | P9CSV*5N | P9CSV*3N | 16.50 |
| Satin Chrome | Knob | P9MSM*0† | 14.50 | P9MSM*1† | P9MSM*5† | P9MSM*3† | 16.50 |
| | Black Lever | P9MSV*0N | 14.50 | P9MSV*1N | P9MSV*5N | P9MSV*3N | 16.50 |
| Round Engineered Plastic | Knob | P9XSM*0† | 14.50 | P9XSM*1† | P9XSM*5† | P9XSM*3† | 16.50 |
| | Black Lever | P9XSV*0N | 14.50 | P9XSV*1N | P9XSV*5N | P9XSV*3N | 16.50 |
| Square Engineered Plastic | Knob | P9SSM*0† | 14.50 | P9SSM*1† | P9SSM*5† | P9SSM*3† | 16.50 |

* Cams

Choose desired cam. Note selection and position of contact block(s).

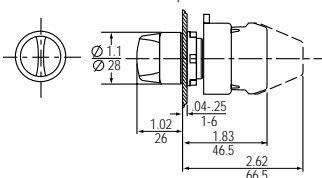
| *Cam Code | | | | Screw Terminal Contact Block | | Quick Connect Terminal Contact Block | |
|-----------|---|---|---|------------------------------|------------|--------------------------------------|------------|
| | | | | Position 1 | Position 2 | Position 1 | Position 2 |
| Z | 0 | 0 | X | P9B10VN | — | P9B10FN | — |
| | X | 0 | 0 | — | P9B10VN | — | P9B10FN |
| | X | X | 0 | P9B01VN | — | P9B01FN | — |
| | 0 | X | X | — | P9B01VN | — | P9B01FN |
| | 0 | 0 | X | P9B11VN | — | — | — |
| | X | X | 0 | — | P9B11VN | — | — |
| | 0 | X | X | — | P9B01VN | — | P9B01FN |
| E | 0 | 0 | X | P9B10VN | — | P9B10FN | — |
| | 0 | X | 0 | P9B11VN | — | — | — |
| | 0 | X | 0 | — | P9B01VN | — | P9B01FN |
| L | X | 0 | 0 | — | P9B10VN | — | P9B10FN |
| | 0 | X | 0 | P9B01VN | — | P9B01FN | — |
| | X | 0 | 0 | P9B11VN | — | — | — |
| U | 0 | 0 | X | P9B11VN | — | — | — |
| | 0 | X | 0 | — | P9B11VN | — | — |
| | X | 0 | 0 | — | P9B11VN | — | — |



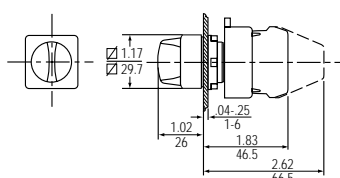
† Colors

| Color | Black | Red | Green | Yellow | Blue | No Knob ¹ |
|-------------|-------|-----|-------|--------|------|----------------------|
| †Color Code | N | R | V | G | L | 0 |

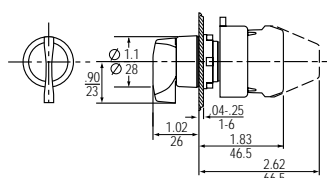
¹ Subtract \$3.00 from list price, GO-10GC, for selector switches ordered without knobs.



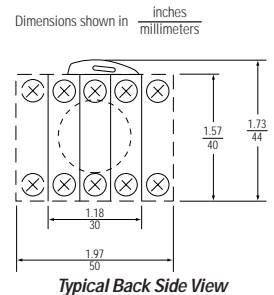
Round Knob Selector Switch



Square Knob Selector Switch



Round Lever Selector Switch



Typical Back Side View

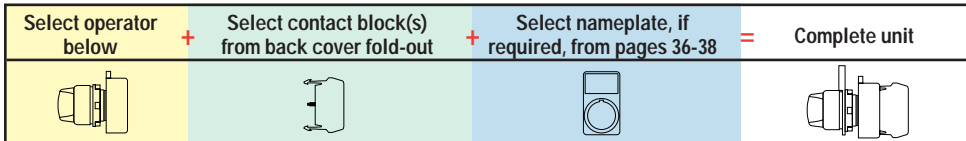
Selection & drawing data: pages 4-5. Accessories: pages 46-47. Technical data: pages 6-11.
 Color caps, heads, lenses and handles are also stocked separately: page 41.



2-Position Knob- & Lever-Operated Selector Switches



Selection Process



Operators

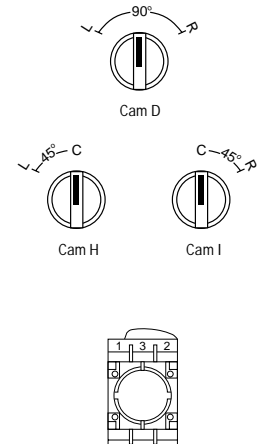
Replace **asterisk (*)** in maintained catalog number with cam code from cams table below.
 Replace **dagger (†)** in catalog number with color code from colors table below.

| Style | Handle | Maintained | List Price, GO-10GC | Spring Return L→C (Cam H) | Spring Return L←R (Cam D) | Spring Return C↔R (Cam I) | List Price, GO-10GC |
|---------------------------|-------------|-------------|---------------------|---------------------------|---------------------------|---------------------------|---------------------|
| | | Catalog No. | | Catalog No. | Catalog No. | Catalog No. | |
| Polished Chrome | Knob | P9CSM*0† | \$14.50 | P9CSMH1† | P9CSMD5† | P9CSMI5† | \$16.50 |
| | Black Lever | P9CSV*0N | 14.50 | P9CSVH1N | P9CSVD5N | P9CSVI5N | 16.50 |
| Satin Chrome | Knob | P9MSM*0† | 14.50 | P9MSMH1† | P9MSMD5† | P9MSMI5† | 16.50 |
| | Black Lever | P9MSV*0N | 14.50 | P9MSVH1N | P9MSVD5N | P9MSVI5N | 16.50 |
| Round Engineered Plastic | Knob | P9XSM*0† | 14.50 | P9XSMH1† | P9XSMD5† | P9XSMI5† | 16.50 |
| | Black Lever | P9XSV*0N | 14.50 | P9XSVH1N | P9XSVD5N | P9XSVI5N | 16.50 |
| Square Engineered Plastic | Knob | P9SSM*0† | 14.50 | P9SSMH1† | P9SSMD5† | P9SSMI5† | 16.50 |

* Cams

Choose desired cam. Note selection and position of contact block(s).

| *Cam Code | Cam D | Cam H | Cam I | Screw Terminal Contact Block | | Quick Connect Terminal Contact Block | |
|-----------|-------|-------|-------|------------------------------|------------|--------------------------------------|------------|
| | | | | Position 1 | Position 2 | Position 1 | Position 2 |
| D | O | — | X | — | P9B10VN | — | P9B10FN |
| | X | — | O | P9B01VN | — | P9B01FN | — |
| | O | — | X | P9B11VN | — | — | — |
| | X | — | O | — | — | — | — |
| I | — | O | X | — | P9B10VN | — | P9B10FN |
| | — | X | O | P9B01VN | — | P9B01FN | — |
| | — | O | X | P9B11VN | — | — | — |
| H | X | O | — | — | P9B10VN | — | P9B10FN |
| | O | X | — | P9B01VN | — | P9B01FN | — |
| | X | O | — | P9B11VN | — | — | — |
| | O | X | — | — | — | — | — |

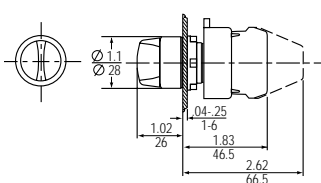


† Colors

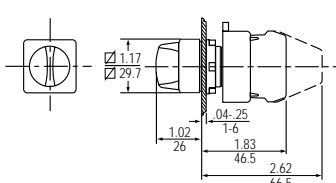
| Color | Black | Red | Green | Yellow | Blue | No Knob ¹ |
|-------------|-------|-----|-------|--------|------|----------------------|
| †Color Code | N | R | V | G | L | 0 |

¹ Subtract \$3.00 from list price, GO-10GC, for selector switches ordered without knobs.

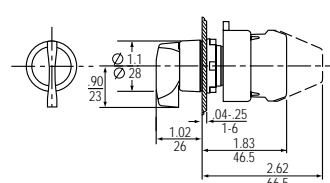
Dimensions shown in inches / millimeters



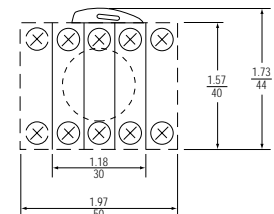
Round Knob Selector Switch



Square Knob Selector Switch



Round Lever Selector Switch



Typical Back Side View

Selection & drawing data: pages 4-5. Accessories: pages 46-47. Technical data: pages 6-11.
 Color caps, heads, lenses and handles are also stocked separately: page 41.