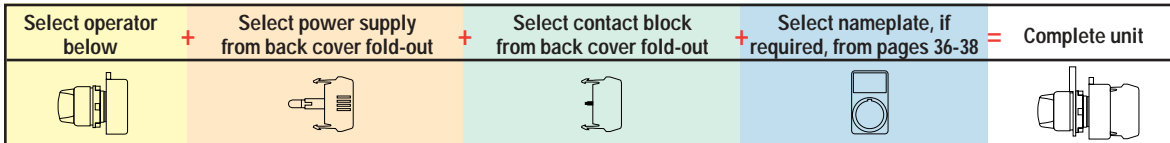




2- & 3-Position Illuminated Knob-Operated Selector Switches



Selection Process



Operators

Replace **asterisk (*)** in catalog number with color code from colors table below.

Style	Number Of Positions	Maintained Catalog No.	List Price, GO-10GC	Spring Return Catalog Number			List Price, GO-10GC
				L→C	C←R	L→C←R	
● Polished Chrome	2	P9CSLD0*	\$18.50	—	—	—	—
	3	P9CSLZ0*	18.50	P9CSLZ1*	P9CSLZ5*	P9CSLZ3*	\$26.00
○ Satin Chrome	2	P9MSLD0*	18.50	—	—	—	—
	3	P9MSLZ0*	18.50	P9MSLZ1*	P9MSLZ5*	P9MSLZ3*	26.00
● Round Engineered Plastic	2	P9XSLD0*	18.50	—	—	—	—
	3	P9XSLZ0*	18.50	P9XSLZ1*	P9XSLZ5*	P9XSLZ3*	26.00
□ Square Engineered Plastic	2	P9SSLD0*	18.50	—	—	—	—
	3	P9SSLZ0*	18.50	P9SSLZ1*	P9SSLZ5*	P9SSLZ3*	26.00

* Colors

Color	Red	Green	Yellow	Blue	White	Orange	Clear	No Knob ¹
*Color Code	R	V	G	L	B	A	I	0

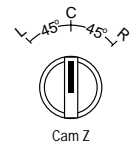
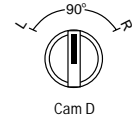
¹ When ordering operator with no lens, deduct \$3.00 from list price GO-10GC.

Cams

Note selection and position of contact block(s) according to operator type.

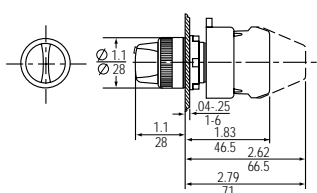
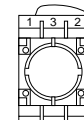
2-Position

Cam Code				Screw Terminal Contact Block		Quick Connect Terminal Contact Block	
				Position 1	Position 2	Position 1	Position 2
D	O	—	X	—	P9B10VN	—	P9B10FN
	X	—	O	P9B01VN	—	P9B01FN	—
	O	—	X	P9B11VN	—	—	—
	X	—	O	—	—	—	—

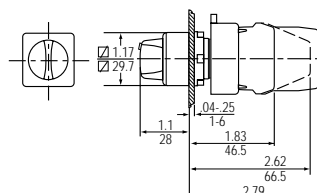


3-Position

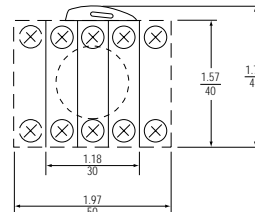
Cam Code				Screw Terminal Contact Block		Quick Connect Terminal Contact Block	
				Position 1	Position 2	Position 1	Position 2
Z	O	O	X	P9B10VN	—	P9B10FN	—
	X	O	O	—	P9B10VN	—	P9B10FN
	X	X	O	P9B01VN	—	P9B01FN	—
	O	X	X	—	P9B01VN	—	P9B01FN
	O	O	X	P9B11VN	—	—	—
	X	X	O	—	—	—	—
	X	O	O	—	P9B11VN	—	—



Round Illuminated Knob Selector Switch



Square Illuminated Knob Selector Switch



Typical Back Side View

Dimensions shown in $\frac{\text{inches}}{\text{millimeters}}$

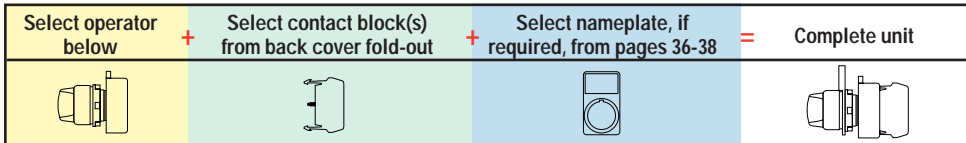
Selection & drawing data: pages 4-5. Accessories: pages 46-47. Technical data: pages 6-11. Color caps, heads, lenses and handles are also stocked separately: page 41.



2-Position Knob- & Lever-Operated Selector Switches



Selection Process



Operators

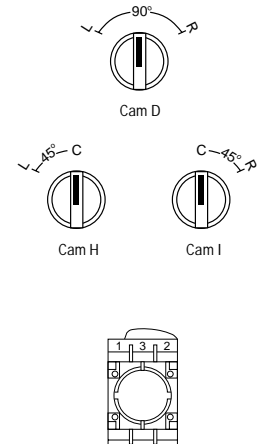
Replace **asterisk (*)** in maintained catalog number with cam code from cams table below.
 Replace **dagger (†)** in catalog number with color code from colors table below.

Style	Handle	Maintained	List Price, GO-10GC	Spring Return	Spring Return	Spring Return	List Price, GO-10GC
		Catalog No.		L→C (Cam H)	L←R (Cam D)	C←R (Cam I)	
Polished Chrome	Knob	P9CSM*0†	\$14.50	P9CSMH1†	P9CSMD5†	P9CSMI5†	\$16.50
	Black Lever	P9CSV*0N	14.50	P9CSVH1N	P9CSVD5N	P9CSVI5N	16.50
Satin Chrome	Knob	P9MSM*0†	14.50	P9MSMH1†	P9MSMD5†	P9MSMI5†	16.50
	Black Lever	P9MSV*0N	14.50	P9MSVH1N	P9MSVD5N	P9MSVI5N	16.50
Round Engineered Plastic	Knob	P9XSM*0†	14.50	P9XSMH1†	P9XSMD5†	P9XSMI5†	16.50
	Black Lever	P9XSV*0N	14.50	P9XSVH1N	P9XSVD5N	P9XSVI5N	16.50
Square Engineered Plastic	Knob	P9SSM*0†	14.50	P9SSMH1†	P9SSMD5†	P9SSMI5†	16.50

* Cams

Choose desired cam. Note selection and position of contact block(s).

*Cam Code	Cam D	Cam H	Cam I	Screw Terminal Contact Block		Quick Connect Terminal Contact Block	
				Position 1	Position 2	Position 1	Position 2
D	0	—	X	—	P9B10VN	—	P9B10FN
	X	—	0	P9B01VN	—	P9B01FN	—
	0	—	X	P9B11VN	—	—	—
	X	—	0	—	—	—	—
I	—	0	X	—	P9B10VN	—	P9B10FN
	—	X	0	P9B01VN	—	P9B01FN	—
	—	0	X	P9B11VN	—	—	—
	—	X	0	—	—	—	—
H	X	0	—	—	P9B10VN	—	P9B10FN
	0	X	—	P9B01VN	—	P9B01FN	—
	X	0	—	P9B11VN	—	—	—
	0	X	—	—	—	—	—

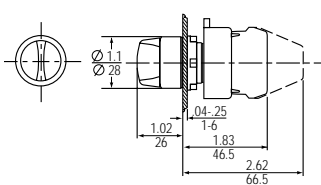


† Colors

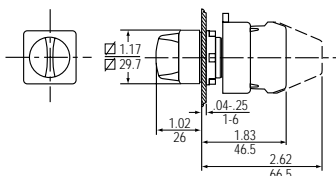
Color	Black	Red	Green	Yellow	Blue	No Knob ¹
†Color Code	N	R	V	G	L	0

¹ Subtract \$3.00 from list price, GO-10GC, for selector switches ordered without knobs.

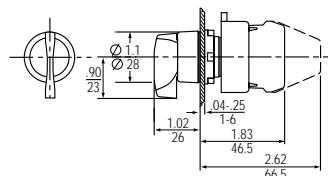
Dimensions shown in inches / millimeters



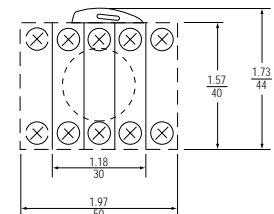
Round Knob Selector Switch



Square Knob Selector Switch



Round Lever Selector Switch



Typical Back Side View

Selection & drawing data: pages 4-5. Accessories: pages 46-47. Technical data: pages 6-11.
 Color caps, heads, lenses and handles are also stocked separately: page 41.