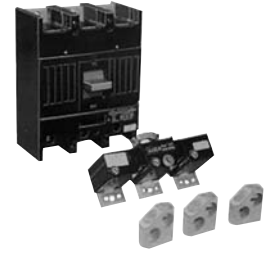


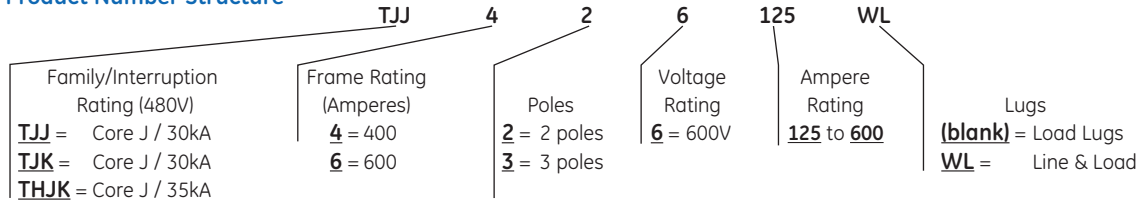
Molded Case Circuit Breakers Industrial Circuit Breakers

125-600A Circuit Breakers
Thermal-Magnetic Trip
J600 Line Circuit Breakers
Types TJJ, TJK, THJK



TYPE TJK

Product Number Structure



Note: This information is provided for interpreting product numbers (it should not be used to build product numbers).

Type TJJ Noninterchangeable Trip, includes Cu/Al Line and Load Lugs, suitable for reverse feed

Ampere Rating	Adjustable Instantaneous Trip Ampere Range		Frame				Terminal Lugs for Front Connection (Cu/Al)	
			2-Pole, 400 Ampere Frame 600 Vac, 250 Vdc		3-Pole, 400 Ampere Frame 600 Vac		Copper/ Aluminum Lugs	Wire Size
			Product Number	List Price GO-135LG	Product Number	List Price GO-135LG		
125	375	1250	TJJ426125WL	\$2118.00	TJJ436125WL	\$2573.00	TCAL43 ³ Included in price of breaker	(1) 6-600 or (2) 2/0-250 Cu/Al
150	450	1500	TJJ426150WL	\$2118.00	TJJ436150WL	\$2573.00		
175	525	1750	TJJ426175WL	\$2118.00	TJJ436175WL	\$2573.00		
200	600	2000	TJJ426200WL	\$2118.00	TJJ436200WL	\$2573.00		
225	675	2250	TJJ426225WL	\$2118.00	TJJ436225WL	\$2573.00		
250	750	2500	TJJ426250WL	\$2118.00	TJJ436250WL	\$2573.00		
300	900	3000	TJJ426300WL	\$2118.00	TJJ436300WL	\$2573.00		
350	1050	3500	TJJ426350WL	\$2118.00	TJJ436350WL	\$2573.00		
400	1200	4000	TJJ426400WL	\$2118.00	TJJ436400WL	\$2573.00		

Types TJK, THJK – Interchangeable Trip, includes Cu/Al Line and Load Lugs, not suitable for reverse feed

Adjustable Instantaneous Trip Ampere Range					Complete Circuit Breaker Includes Line and Load Lugs					Terminal Lugs for Front Connection (Cu/Al) ¹			
Ampere Rating	Range		Standard Product Number	List Price GO-135LG	Hi-Break Product Number	List Price GO-135LG	Frame Only Product		Trip Unit Only. Use with Standard and Hi-Break Frames	List Price GO-135LG	Product Number (Order 2 per pole)	List Price GO-135LG	Wire Size
	Low	High					Product Number	List Price GO-135LG					
400A Frame – Two-Pole													
125	375	1250	TJK426125WL	\$2118.00	THJK426125WL	\$3085.00			TJK426T125	\$464.00	TCAL43 ³	\$14.00	(1) 6-600 or (2) 2/0-250 Cu/Al
150	450	1500	TJK426150WL	\$2118.00	THJK426150WL	\$3085.00	TJK426F000	\$1598.00	TJK426T150	\$464.00			
175	525	1750	TJK426175WL	\$2118.00	THJK426175WL	\$3085.00	Standard		TJK426T175	\$464.00			
200	600	2000	TJK426200WL	\$2118.00	THJK426200WL	\$3085.00	Frame		TJK426T200	\$464.00			
225	675	2250	TJK426225WL	\$2118.00	THJK426225WL	\$3085.00			TJK426T225	\$464.00			
250	750	2500	TJK426250WL	\$2118.00	THJK426250WL	\$3085.00			TJK426T250	\$464.00			
300	900	3000	TJK426300WL	\$2118.00	THJK426300WL	\$3085.00			TJK426T300	\$464.00			
350	1050	3500	TJK426350WL	\$2118.00	THJK426350WL	\$3085.00	THJK426F000	\$2565.00	TJK426T350	\$464.00			
400	1200	4000	TJK426400WL	\$2118.00	THJK426400WL	\$3085.00	Hi-Break		TJK426T400	\$464.00			
400A Frame – Three-Pole													
125	375	1250	TJK436125WL	\$2573.00	THJK436125WL	\$3675.00			TJK436T125	\$464.00	TCAL43 ³	\$14.00	(1) 6-600 or (2) 2/0-250 Cu/Al
150	450	1500	TJK436150WL	\$2573.00	THJK436150WL	\$3675.00	TJK436F000	\$2025.00	TJK436T150	\$464.00			
175	525	1750	TJK436175WL	\$2573.00	THJK436175WL	\$3675.00	Standard		TJK436T175	\$464.00			
200	600	2000	TJK436200WL	\$2573.00	THJK436200WL	\$3675.00	Frame		TJK436T200	\$464.00			
225	675	2250	TJK436225WL	\$2573.00	THJK436225WL	\$3675.00			TJK436T225	\$464.00			
250	750	2500	TJK436250WL	\$2573.00	THJK436250WL	\$3675.00			TJK436T250	\$464.00			
300	900	3000	TJK436300WL	\$2573.00	THJK436300WL	\$3675.00			TJK436T300	\$464.00			
350	1050	3500	TJK436350WL	\$2573.00	THJK436350WL	\$3675.00	THJK436F000	\$3127.00	TJK436T350	\$464.00			
400	1200	4000	TJK436400WL	\$2573.00	THJK436400WL	\$3675.00	Hi-Break		TJK436T400	\$464.00			
400	600	2000	—	—	—	—			TJK436TM1400 ²	\$558.00			
Mag	1200	4000	—	—	—	—			TJK436TM2400 ²	\$558.00			
Only	350	1000	—	—	—	—			TJK436TM3400 ²	\$558.00			

¹For optional lugs, see page 3-105.

²Not UL listed.

³Alternate lug for 750 kcmil Cu/Al cable, Product Number TCAL47 List Price \$26.00, GO-135LG.

Accessories: See pages 3-39 to 3-45 and 3-96 to 3-108.



Molded Case Circuit Breakers

Industrial Circuit Breakers

Section 3

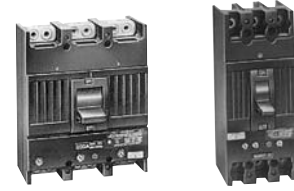
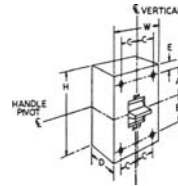
Page Updated 08 / 2008

Quick Reference Guide

10-1200A Circuit Breakers

Thermal Magnetic Trip

Ratings do not apply to molded case switches. The interruption ratings and voltages shown in the table are maximum ratings. A circuit breaker of the type given in the left-hand column may be applied at the given circuit voltage in any electrical distribution system where the available fault current at the load terminals of the breaker does not exceed the value in the table. That circuit breaker type may also be applied at intermediate values of circuit voltage provided the available fault current at the load terminals of the breaker does not exceed the value in the table for the higher value of voltage.



TJJ, TJK, THJK T FJ, TFK, THFK

TEY and TEYF (UL File E-11592; Fixed Thermal Magnetic Trip Unit; CSA LR 57114)

Circuit Breaker Type	Ampere Rating	No. Poles	Maximum Voltage Rating		UL Listed Interrupting Ratings— kA									Dimensions (In.)						Approx. Ship Wt./Std. Pack		
			ac	dc	Vac					Vdc			Dimensions (In.)									
					120	120/240	240	277	480	600	125	250	500 ¹	H	W	D	A	B	C		E	
TEY ²	15-100	1	277	125	65	—	14	14	—	—	10	—	—	5 1/4	1	3 1/16	—	—	—	—	—	—
		2	480/277	250	—	—	65	14	14 ⁵	—	—	10	—		2							
		3	—	—	—	—	—	—	—	—	—	—	—		3							
TEYF ²	15-100	1	277	125	65	—	14	14	—	—	10	—	—	5 1/4	1	3 1/16	—	—	—	—	—	—
		2	480/277	250	—	—	65	14	14 ⁵	—	—	10	—		2							
		3	—	—	—	—	—	—	—	—	—	—	—		3							

E150 (UL File E-11592; Fixed Thermal Magnetic Trip Unit; CSA LR 57114)

TEB ²	10-100 ³	1	120	125	10	—	—	—	—	—	5	—	—	6 5/16	1 3/8	3 3/8	2 41/64	2 15/64	—	23/32	26 lb/24	
		2	240	250	—	—	10	—	—	—	—	5	—		2 3/4				24 lb/12			
		3	—	—	—	—	—	—	—	—	—	—	—		4 1/8				11/16		28 lb/8	
TED ²	10-100 ³	1	277,347 ⁴	125	—	—	14	10	—	10	—	—	—	6 5/16	1 3/8	3 3/8	2 41/64	2 15/64	—	23/32	26 lb/24	
		2	480	250	—	—	18	—	18	—	—	10	—		2 3/4				24 lb/12			
		3	480,600	500	—	—	—	—	—	—	—	—	10		4 1/8				11/16		28 lb/8	
THED ²	15-30	1	277,347 ⁴	125	—	—	65	—	—	20 ⁶	—	—	—	6 5/16	1 3/8	3 3/8	2 41/64	2 15/64	—	23/32	26 lb/24	
		2	480	250	—	—	65	—	25	—	—	20 ⁶	—		4 1/8				24 lb/12			
	15-150	2	—	—	—	—	65	—	18	—	—	—	10		—				—		11/16	28 lb/8
		3	600	500	—	—	42	—	—	—	—	—	—		—				—		—	28 lb/8

F225 (UL File E-11592; TFJ, Fixed Thermal Magnetic Trip Unit; TFK, THFK: Interchangeable Thermal Mag. Trip Unit; CSA LR 40350)

TFJ ²	70-225	2	480	250	—	—	25	—	22	—	10	—	10 1/8	4 1/8	3 13/16	3 7/8	3 7/8	11/16	1 3/16	10 lb/1
	70-250	3	600	500	—	—	—	—	—	18	—	10								12 lb/1
TFK ²	70-225	2	480	250	—	—	25	—	22	—	10	—	10 1/8	4 1/8	3 13/16	3 7/8	3 7/8	11/16	1 3/16	10 lb/1
		3	600	500	—	—	—	—	—	18	—	10								12 lb/1
THFK ²	70-225	2	480	250	—	—	65	—	25	—	10	—	10 1/8	4 1/8	3 13/16	3 7/8	3 7/8	11/16	1 3/16	10 lb/1
		3	600	500	—	—	18	—	—	—	—	10								12 lb/1
TFL ⁷	70-225	3	600	—	—	100	100	—	65	25	—	—	10 1/8	4 1/8	3 13/16	3 7/8	3 7/8	11/16	1 3/16	—

J600 (UL File E-11592; TJJ, Fixed Thermal Magnetic Trip Unit; TJK, THJK: Interchangeable Thermal Mag. Trip Unit; CSA LR 40350)

TJJ, TJK ⁴	125-400	2	—	250	—	—	42	—	30	22	—	10	—	10 1/8	8 1/4	3 13/16	3 15/16	3 13/16	1 3/8	1 3/16	16 lb/1
		3	600	500	—	—	—	—	—	—	—	20	—								17 1/2 lb/1
TJK ⁶	250-600	2	—	250	—	—	42	—	30	22	—	10	—	10 1/8	8 1/4	3 13/16	3 15/16	3 13/16	1 3/8	1 3/16	18 lb/1
		3	600	500	—	—	—	—	—	—	—	20	—								20 lb/1
THJK ⁴	125-400	2	—	250	—	—	65	—	35	25	—	40	—	10 1/8	8 1/4	3 13/16	3 15/16	3 13/16	1 3/8	1 3/16	16 lb/1
		3	600	—	—	—	—	—	—	—	—	40	20								17 1/2 lb/1
THJK ⁶	250-600	2	—	250	—	—	65	—	35	25	—	40	—	10 1/8	8 1/4	3 13/16	3 15/16	3 13/16	1 3/8	1 3/16	18 lb/1
		3	600	—	—	—	—	—	—	—	—	40	20								20 lb/1

K1200 (UL File E-11592; Interchangeable Thermal Magnetic Trip Unit; CSA LR 40350)

TKM8	300-800	2	—	250	—	—	42	—	30	22	—	10	—	15 1/2	8 1/4	5 1/2	8 9/16	5 11/16	1 3/8	5/8	33 lb/1
		3	600	500	—	—	—	—	—	—	—	22	—								39 lb/1
TKM12	600-1200	2	—	—	—	—	42	—	30	22	—	—	—	15 1/2	8 1/4	5 1/2	8 9/16	5 11/16	1 3/8	5/8	38 lb/1
		3	600	—	—	—	—	—	—	—	—	—	—								41 1/2 lb/1
THKM8	300-800	2	—	250	—	—	65	—	35	25	—	40	—	15 1/2	8 1/4	5 1/2	8 9/16	5 11/16	1 3/8	5/8	33 lb/1
		3	600	—	—	—	—	—	—	—	—	40	22								39 lb/1
THKM12	600-1200	2	—	—	—	—	65	—	35	25	—	—	—	15 1/2	8 1/4	5 1/2	8 9/16	5 11/16	1 3/8	5/8	38 lb/1
		3	600	—	—	—	—	—	—	—	—	—	—								41 1/2 lb/1

¹ UL listed with poles in series for 500 Vdc ungrounded battery applications.

² UL listed as HACR (heating, air conditioning, and refrigeration).

³ 10 amp not UL listed.

⁴ UL listed/CSA Certified for 10kA @ 347 Vac (TED) and 18kA @ 347V (THED). Also rated 10kA @ 480V but not UL listed.

⁵ 480Y/277 Vac.

⁶ UL listed at 10,000 amps

⁷ No longer available

