

Circuit Breaker Enclosures

NEMA Type 1

100-1200 Amperes
240-600 Volts ac
125-250 Volts dc

- UL Listed
- Suitable for use as service equipment
- 60°C/75°C conductor ratings
- Short circuit ratings are equal to the rating of the installed breaker.
- Spectra RMS breakers have ac ratings only.

Section 4



Type 1, Indoor Surface or Flush Mounting

NEMA Type 1

Frame Type	Ampere Rating	No. of Poles	Product Number ¹	List Price, GO-134	Neutral Product Number	List Price, GO-134	Neutral for Ground Fault ²	List Price, GO-134	Current Trans. For Ground Fault ²	List Price, GO-135S
THQL, TXQL, THQL-GF	100	1, 2, 3	TQL100F ^{3,4}	\$180.00 ⁵	Included	-	-	-	-	-
			TQL100S ^{3,4}	\$180.00 ⁵	Included	-	-	-	-	-
			TQC100F ³	\$225.00	Included	-	-	-	-	-
THQC, THHQ, TXQC	100	1, 2, 3	TQC100S ³	\$225.00	Included	-	-	-	-	-
			TE100F	\$225.00	Included	-	-	-	-	-
SE150, THED, TED, TEB	100	2, 3	TE100S	\$225.00	Included	-	-	-	-	-
			TE150F	\$325.00	Included	-	-	-	-	-
SE150, THED, TED	150	2, 3	TE150S	\$325.00	Included	-	-	-	-	-
			TQL125F	\$135.00	Included	-	-	-	-	-
THQL	125	2	TQL125S	\$135.00	Included	-	-	-	-	-
			TQD225F	\$325.00 ⁵	Included	-	-	-	-	-
TQD, THQD	225	2, 3	TQD225S	\$325.00 ⁵	Included	-	-	-	-	-
			TF225F ⁶	\$350.00	TNIA225	\$98.50	-	-	-	-
THFK, TFK, TFJ	225	2, 3	TF225S ⁶	\$350.00	TNIA225	\$98.50	-	-	-	-
			SF250F	\$350.00	TNIA225	\$98.50	-	-	-	-
SF250	250	2, 3	SF250S	\$350.00	TNIA225	\$98.50	-	-	-	-
			TJ400F ⁷	\$425.00 ⁵	TNIA400	\$122.00	-	-	-	-
TTJD, TJJ, THJK, TJK	400	2, 3	TJ400S ⁷	\$425.00 ⁵	TNIA400	\$122.00	-	-	-	-
			TJ600F	\$750.00	TNIA400	\$122.00	-	-	-	-
TJK, THJK	600	2, 3	TNIA600	\$180.00	-	-	-	-	-	
			TNIA400	\$122.00	-	-	-	-	-	
			TJ600S	\$750.00	TNIA600	\$180.00	-	-	-	-
SG400	400	2, 3	SG400F	\$425.00	TNIA400	\$122.00	TNIA400VG	\$122.00	TSRG201	\$532.00
			SG400S	\$425.00	TNIA400	\$122.00	TNIA400VG	\$122.00	TSRG204	\$532.00
SG600	600	2, 3	SG600F	\$750.00	TNIA600	\$180.00	TNIA600VG	\$180.00	TSRG206	\$532.00
			SG600S	\$750.00	TNIA600	\$180.00	TNIA600VG	\$180.00	TSRG206	\$532.00
TKMA, THKMA	1200	2, 3	TK4V1200F ⁹	\$900.00	-	-	-	-	-	
			TK4V1200S ⁹	\$900.00	-	-	-	-	-	
SK1200	1200	2, 3	TK4V1200F ^{8,9} TK4V1200S ^{8,9}	\$900.00	TNIA400	\$122.00	-	-	-	-
					TNIA600	\$180.00	TNIA800G	\$297.00	TSKG408	\$532.00
					TNIA800	\$297.00	TNIA1200G	\$447.00	TSKG410	\$532.00
					TNIA1200	\$447.00	-	-	TSKG412	\$532.00
					TNIA1200	\$447.00	-	-	-	-

¹For Product Numbers ending in "F", mounting style is Flush. For Product Numbers ending in "S", mounting style is Surface.

²Neutral for Ground Fault required to mount neutral sensor in enclosure.

³3-pole breakers with an accessory can not be installed in these enclosures.

⁴CSA certified.

⁵GO-134A.

⁶For 250 amp rating, use copper cable only.

⁷Suitable for parallel 250 kcmil maximum. If larger cable is applied, use 600 amp enclosure.

⁸Not suitable for 100% rated breakers.

⁹Suitable for parallel 500 kcmil maximum.

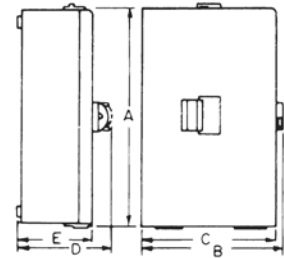


Circuit Breaker Enclosures Dimensions and Outline Drawings

Section 4

NEMA Type 1 Enclosures

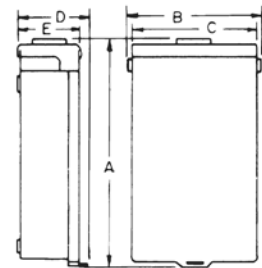
Product Number	Dimension ¹ A (in.)	Dimension ¹ B (in.)	Dimension ¹ C (in.)	Dimension D (in.)	Dimension E (in.)	Outline Drawing No.
TE100F, S	17	-	7 7/8	5 1/2	4 3/4	139C5651 Sh 1
TE150F, S	26 7/16	8 7/8	8 7/8	6 3/16	5 1/2	139C5497 Sh 1
TF225F, S	29 7/8	8 7/8	8 7/8	6 3/16	5 1/2	139C5497 Sh 2
SG400F	31 3/8	-	15 5/32	7 5/16	6 5/8	208C2891 Sh 1
SG400S	30 5/16	-	14 1/8	7 5/16	6 5/8	208C2891 Sh 1
TJ400F, S ²	27 7/16	15 7/16	15 7/16	7 1/8	6 7/16	139C5497 Sh 3
SG600F	44	-	18 3/16	9	8 3/8	208C2891 Sh 1
SG600S	42 3/4	-	17 1/8	9	8 3/8	208C2891 Sh 2
TJ4V600F, S	46 5/8	17 3/16	17 3/16	9 1/16	8 3/8	139C5497 Sh 4
TJ600F, S	46 5/8	17 3/16	17 3/16	9 1/16	8 3/8	139C5497 Sh 4
TJ9V600F, S	46 5/8	17 3/16	17 3/16	9 1/16	8 3/8	139C5497 Sh 4
TK4V1200F, S	48 1/8	21 15/16	21 15/16	9 9/16	8 11/16	139C5497 Sh 5
TQC100F, S	15 1/4	-	6 7/8	4 3/4	4	139C5651 Sh 1
TQD225F, S	26 7/16	8 7/8	8 7/8	6 3/16	5 1/2	139C5497 Sh 1
TQL100F, S	15 1/4	-	6 7/8	4 3/4	4	139C5651 Sh 1
TQL125F, S	16 7/8	-	6 3/4	5 3/16	4 1/2	139C5651 Sh 2



NEMA Type 1
Suffix F (Flush) Suffix S (Surface)

NEMA Type 3 Enclosures

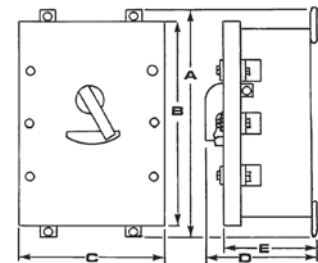
Product Number	Dimension A (in.)	Dimension B (in.)	Dimension C (in.)	Dimension D (in.)	Dimension E (in.)	Outline Drawing No.
TE100R	18 1/8	7 7/8	7 1/2	5 11/16	5 3/8	139C5652 Sh 1
TE150R	27 7/16	10 1/4	10	6 1/4	5 1/2	139C5498 Sh 1
TF225R	30 13/16	10 1/4	10	7	6 1/4	139C5498 Sh 2
SG400R	30 13/16	14 15/16	14 5/8	9 1/8	8	208C2837 Sh 1
SG600R	43	18 7/8	18 1/6	8 13/16	7 11/16	208C2838 Sh 1
TJ400R ²	27 5/16	15 7/8	15 11/16	8 11/16	8	139C5498 Sh 4
TJ4V600R	46 3/16	18 1/16	18 1/16	8 5/8	7 5/8	139C5519 Sh 1
TJ600R	46 3/16	18 1/16	18 1/16	8 5/8	7 5/8	139C5519 Sh 1
TJ9V600R	46 3/16	18 1/16	18 1/16	8 5/8	7 5/8	139C5519 Sh 1
TK4V1200R	47 3/4	23 3/8	22 9/16	9 7/16	8 5/16	139C5520 Sh 1
TQC100R	15 3/4	7 7/8	7 1/2	5 11/16	5 3/8	139C5652 Sh 1
TQD150NRE	26 13/16	7 13/16	7 5/8	5 1/8	4 7/16	139C5498 Sh 3
TQD200NRE	26 13/16	7 13/16	7 5/8	5 1/8	4 7/16	139C5498 Sh 3
TQD225NR	26 13/16	7 13/16	7 5/8	5 1/8	4 7/16	139C5498 Sh 3
TQD225R	26 3/8	10 1/4	10	6 1/4	5 1/2	139C5498 Sh 1
TQL100R	17	7 1/4	6 7/8	6	5	139C5652 Sh 1
TQL125R	18 5/16	7 11/16	7 1/2	6 5/16	5 3/16	139C5652 Sh 1



NEMA Type 3R Outdoor Enclosure

NEMA Type 4/4X Enclosures

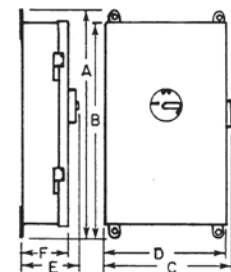
Product Number	Dimension A (in.)	Dimension B (in.)	Dimension C (in.)	Dimension D (in.)	Dimension E (in.)	Outline Drawing No.
SE100CS	19 1/4	18 1/2	8 1/2	7	5	139C5654 Sh 1
TE100CS	19 1/4	17 1/4	8 1/2	7	5	139C5654 Sh 1
TF225CS	32 5/8	30 13/16	9 1/4	8 15/16	7 1/16	139C5496 Sh 1
SF250CS	36 5/8	34 13/16	9 1/4	7 27/32	5 29/32	168D1626 Sh 1
TJ400CS ²	29 1/4	27 1/2	16 1/4	9 1/16	7 1/8	139C5496 Sh 2
TJ4V600CS	46 1/4	45 1/2	19 1/8	9 1/16	7 1/8	139C5496 Sh 3
SG400CS ³	32	31 1/4	14 1/8	9 5/16	7 7/16	208C2888 Sh 1
TJ600CS	46 1/4	45 1/2	19 1/8	9 1/16	7 1/8	139C5496 Sh 3



NEMA Type 4/4X Stainless Steel

NEMA Type 12 and 12K Enclosures

Product Number	Dimension A (in.)	Dimension B (in.)	Dimension C (in.)	Dimension D (in.)	Dimension E (in.)	Dimension F (in.)	Outline Drawing No.
TB100J	23 1/8	21 5/8	9	8	5 3/4	4 3/8	139C5653 Sh 1
TB400J	48 7/16	46 15/16	17 3/4	17 3/16	9 3/4	8 3/8	139C5682 Sh 5
TB800J	56 5/16	54 13/16	22 11/16	22	10 7/16	8 11/16	139C5682 Sh 6
SE100J, D	19 1/4	17 7/8	9	5	5 3/4	4 7/8	139C5653 Sh 2
TE100J, D	19 1/4	17 7/8	9	5	5 3/4	4 7/8	139C5653 Sh 1
SF250J	36 1/4	35 3/8	9 13/16	9 3/16	7 9/16	6 1/2	208C2884 Sh 2
TF225J	31 3/4	30 1/4	9 1/2	9	7 9/16	6 7/16	139C5682 Sh 2
SG400J	31 3/8	30 1/2	16 5/16	15 11/16	7 7/8	6 9/16	208C2885 Sh 2
TJ400J ²	29 5/16	27 13/16	14 1/4	13 3/16	7 7/8	6 7/16	139C5682 Sh 4
TJ4V600J	48 7/16	46 15/16	17 3/4	17 3/16	9 3/4	8 3/8	139C5682 Sh 5
SG600J	44 7/8	44	18	17 3/8	9 9/16	8 3/8	208C2886 Sh 1
TJ600J	48 7/16	46 15/16	17 3/4	17 3/16	9 3/4	8 3/8	139C5682 Sh 5
TJ9V600J	48 7/16	46 15/16	17 3/4	17 3/16	9 3/4	8 3/8	139C5682 Sh 5
SK1200J	56 5/16	55 7/16	22 11/16	22	10 7/16	8 11/16	139C5682 Sh 6
TK4V1200J	56 5/16	54 13/16	22 11/16	22	10 7/16	8 11/16	139C5682 Sh 6
TK9V1200J	56 5/16	54 13/16	22 11/16	22	10 7/16	8 11/16	139C5682 Sh 6
TK1200J	56 5/16	54 13/16	22 11/16	22	10 7/16	8 11/16	139C5682 Sh 6



NEMA Type 12 and 12K
Suffix D (with KOs) Suffix J (without KOs)

¹Flush front extends approximately 5/8-inch beyond each side.

²Suitable for parallel 250 kcmil maximum. If larger cable is applied, use 600 amp enclosure.

³Not suitable for use with ground fault.



Publications and Reference: See Section 22 for a complete list of additional product-related publications