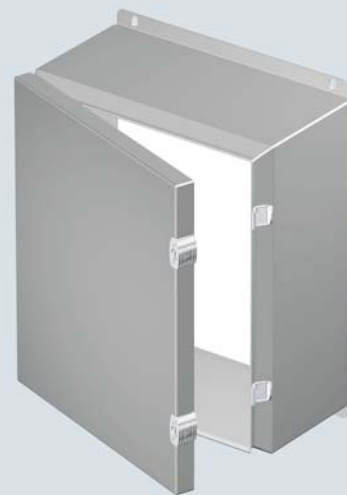


| CATALOG NUMBER | DIMENSIONS | | | | | | | SHIP WGHT LBS. |
|-----------------|------------|----|----|---------|---------|-------|----|----------------|
| | A | B | C | D | E | F | G | |
| 5412 ESCH040403 | 4 | 4 | 3 | No.Pan. | No.Pan. | 4.75 | 2 | 2 |
| 5412 ESCH060403 | 6 | 4 | 3 | 4.88 | 2.88 | 6.75 | 2 | 3 |
| 5412 ESCH060404 | 6 | 4 | 4 | 4.88 | 2.88 | 6.75 | 2 | 4 |
| 5412 ESCH060604 | 6 | 6 | 4 | 4.88 | 4.88 | 6.75 | 4 | 5 |
| 5412 ESCH080604 | 8 | 6 | 4 | 6.88 | 4.88 | 8.75 | 4 | 6 |
| 5412 ESCH080804 | 8 | 8 | 4 | 6.88 | 6.88 | 8.75 | 6 | 8 |
| 5412 ESCH081004 | 8 | 10 | 4 | 6.88 | 8.88 | 8.75 | 8 | 10 |
| 5412 ESCH100804 | 10 | 8 | 4 | 8.88 | 6.88 | 10.75 | 6 | 10 |
| 5412 ESCH120604 | 12 | 6 | 4 | 10.88 | 4.88 | 12.75 | 14 | 8 |
| 5412 ESCH060605 | 6 | 6 | 5 | 4.88 | 4.88 | 6.75 | 4 | 6 |
| 5412 ESCH080605 | 8 | 6 | 5 | 6.88 | 4.88 | 8.75 | 4 | 7 |
| 5412 ESCH101005 | 10 | 10 | 5 | 8.88 | 8.88 | 10.75 | 8 | 14 |
| 5412 ESCH101205 | 10 | 12 | 5 | 8.88 | 10.88 | 10.75 | 10 | 16 |
| 5412 ESCH121005 | 12 | 10 | 5 | 10.88 | 8.88 | 12.75 | 8 | 16 |
| 5412 ESCH121205 | 12 | 12 | 5 | 10.88 | 10.88 | 12.75 | 10 | 18 |
| 5412 ESCH080606 | 8 | 6 | 6 | 6.88 | 4.88 | 8.75 | 4 | 7 |
| 5412 ESCH100806 | 10 | 8 | 6 | 8.88 | 6.88 | 10.75 | 6 | 12 |
| 5412 ESCH101006 | 10 | 10 | 6 | 8.88 | 8.88 | 10.75 | 8 | 14 |
| 5412 ESCH121206 | 12 | 12 | 6 | 10.88 | 10.88 | 12.75 | 10 | 18 |
| 5412 ESCH121406 | 12 | 14 | 6 | 10.88 | 12.88 | 12.75 | 12 | 19 |
| 5412 ESCH140806 | 14 | 8 | 6 | 12.88 | 6.88 | 14.75 | 6 | 10 |
| 5412 ESCH141206 | 14 | 12 | 6 | 12.88 | 10.88 | 14.75 | 10 | 19 |
| 5412 ESCH141606 | 14 | 16 | 6 | 12.88 | 14.88 | 14.75 | 14 | 23 |
| 5412 ESCH161006 | 16 | 10 | 6 | 14.88 | 8.88 | 16.75 | 8 | 19 |
| 5412 ESCH161206 | 16 | 12 | 6 | 14.88 | 10.88 | 16.75 | 10 | 21 |
| 5412 ESCH161406 | 16 | 14 | 6 | 14.88 | 12.88 | 16.75 | 12 | 23 |
| 5412 ESCH121008 | 12 | 10 | 8 | 10.88 | 8.88 | 12.75 | 8 | 16 |
| 5412 ESCH141208 | 14 | 12 | 8 | 12.88 | 10.88 | 14.75 | 10 | 20 |
| 5412 ESCH161208 | 16 | 12 | 8 | 14.88 | 10.88 | 16.75 | 10 | 25 |
| 5412 ESCH161408 | 16 | 14 | 8 | 14.88 | 12.88 | 16.75 | 12 | 26 |
| 5412 ESCH161410 | 16 | 14 | 10 | 14.88 | 12.88 | 16.75 | 12 | 27 |



Data subject to change without notice.



p.384



p.368

JIC enclosures

- Quick Features :**
- Flange-mounted ¼ turn lock
 - Drip shield
 - Optimal mounting surface
 - Seamless welding
 - Poured gasket
 - Panel is included
 - Powder coated

The 5412 ESCH are used indoors or outdoors to protect the enclosed controls from dust, dirt, oil and water splashing. The 5412 ESCH are made from quality 16 GA steel, with corner seems continuously welded.

The opening has a curled lip around all sides to prevent dripping water from entering the enclosure when the door is open, it also increases rigidity. A high quality robotically poured-in-place seamless gasket ensures a complete and durable water tight seal.

This enclosure features incorporated hinging, meaning that the hinge is a part of the box and part of the cover. This minimizes the amount of welding and allows the door to be easily removed by pulling out the full length mushroom head hinge pin. Very few JIC type enclosures offer this considerable advantage.

Eurobex's exclusive flange-mounted ¼ turn locking system insures positive closing while leaving a full workable mounting surface on the door. Each enclosure comes **complete with a 14**

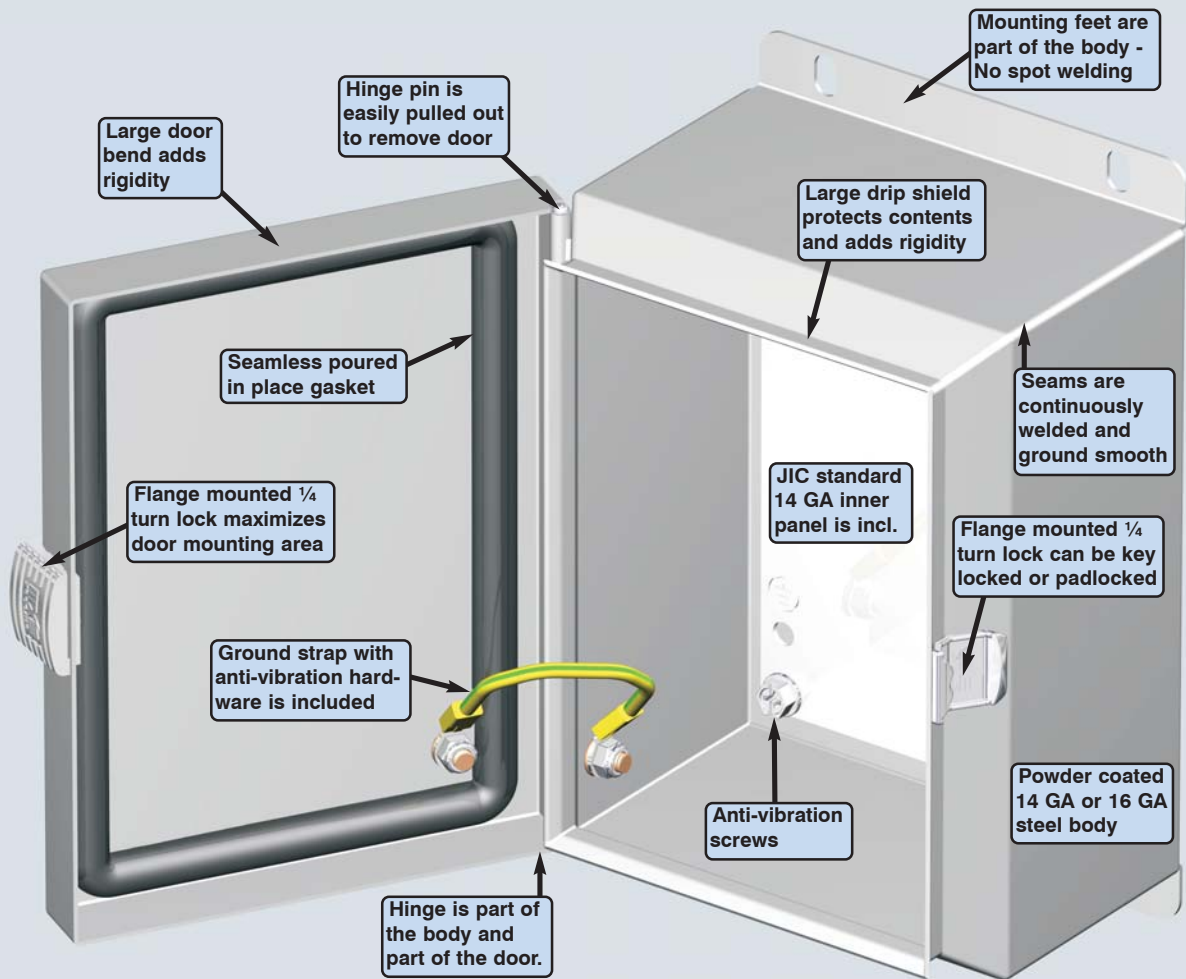
GA inner panel which mounts on weld nuts. The four external wall-mounting holes are oblong to facilitate installation and the mounting feet are incorporated into the body of the enclosure. Enclosures and panels are finished with heat fused polyester powder, electrostatically applied on a phosphatized base. Box is ANSI/ASA 61 grey, panel is white (other colors available).

**CSA Certified / UL Listed
NEMA 4-12 / IP66**



Visit www.eurobex.com for details.

Call us toll free 1-800-363-2423



The 5412 ESCH - Another Eurobex innovation

Data subject to change without notice.

Suggested Accessories

