

# MasterClass LEDtube Mains T8

## 12T8/PER/48-840/BB18/G 10/1 FB

Philips MasterClass MainsFit (UL Type-B) T8 LED lamps use a double-ended design which significantly simplifies installation, saving installation time and costs. This ballast bypass product replaces either T8 or T12 lamps in fixtures containing shunted or non-shunted G13 (medium bi-pin) lamp holders for over 40% energy savings.

### Product data

General Information		Lamp Current (Max)	
Cap-Base	G13 [ Medium Bi-Pin Fluorescent]	Lamp Current (Min)	120 mA
Nominal Lifetime (Nom)	50000 h	Starting Time (Nom)	40 mA
Switching Cycle	50000X	Warm Up Time to 60% Light (Nom)	0.5 s
B50L70	50000 h	Power Factor (Nom)	0.9
Voltage (Nom)		120-277 V	
Light Technical		Temperature	
Color Code	841 [ CCT of 4100K (841)]	T-Ambient (Max)	45 °C
Beam Angle (Nom)	240 °	T-Ambient (Min)	-20 °C
Initial lumen (Nom)	1800 lm	T-Storage (Max)	65 °C
Luminous Flux (Rated) (Nom)	1800 lm	T-Storage (Min)	-40 °C
Rated Beam Angle	240 °	T-Case Maximum (Nom)	70 °C
Correlated Color Temperature (Nom)	4000 K	Controls and Dimming	
Color Consistency	<6	Dimmable	No
Color Rendering Index (Nom)	80	Mechanical and Housing	
LLMF At End Of Nominal Lifetime (Nom)	70 %	Product Length	1200 mm
Operating and Electrical			
Input Frequency	50 to 60 Hz		
Power (Rated) (Nom)	12 W		

# MasterClass LEDtube Mains T8

## Approval and Application

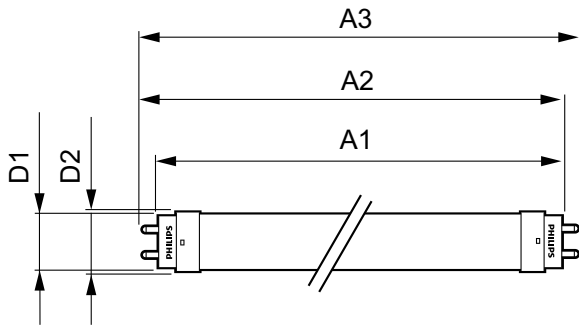
Energy Saving Product	Yes
Approbation Marks	UL certificate RoHS compliance DLC compliance
DesignLights Consortium Qualified Product List	DesignLights Consortium Qualified Product List

## Product Data

Order product name	12T8/PER/48-840/BB18/G 10/1 FB
--------------------	--------------------------------

EAN/UPC - Product	046677532697
Order code	532697
Numerator - Quantity Per Pack	1
Numerator - Packs per outer box	10
Material Nr. (12NC)	929001877004
Net Weight (Piece)	0.215 kg
Model Number	9290018770

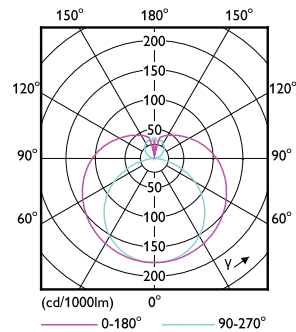
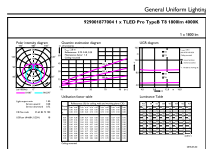
## Dimensional drawing



Performance TypeB 1800lm 12W

Product	D1	D2	A1	A2	A3
12T8/PER/48-840/BB18/G 10/1 FB	25.7 mm	28 mm	1198 mm	1205 mm	1212 mm

## Photometric data

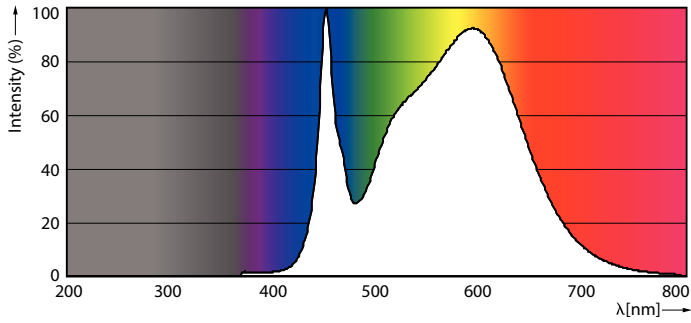


LEDtube PRO 12W G13 840 24D ND

LEDtube PRO 12W G13 830 24D ND

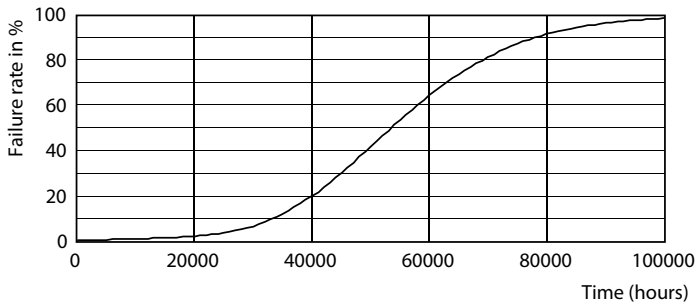
# MasterClass LEDtube Mains T8

## Photometric data

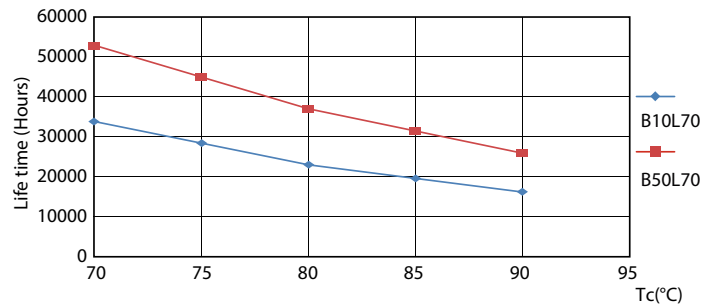


LEDtube PRO 12W G13 840 24D ND

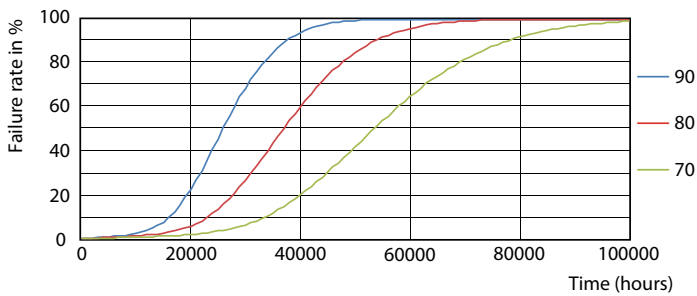
## Lifetime



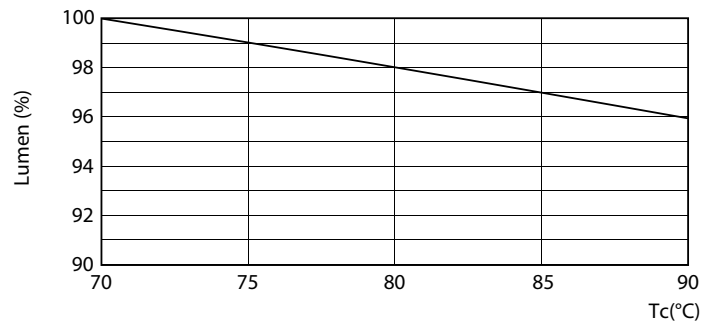
LEDtube PRO 12W G13 830 24D ND



LEDtube PRO 12W G13 830 24D ND



LEDtube PRO 12W G13 830 24D ND



LEDtube PRO 12W G13 830 24D ND