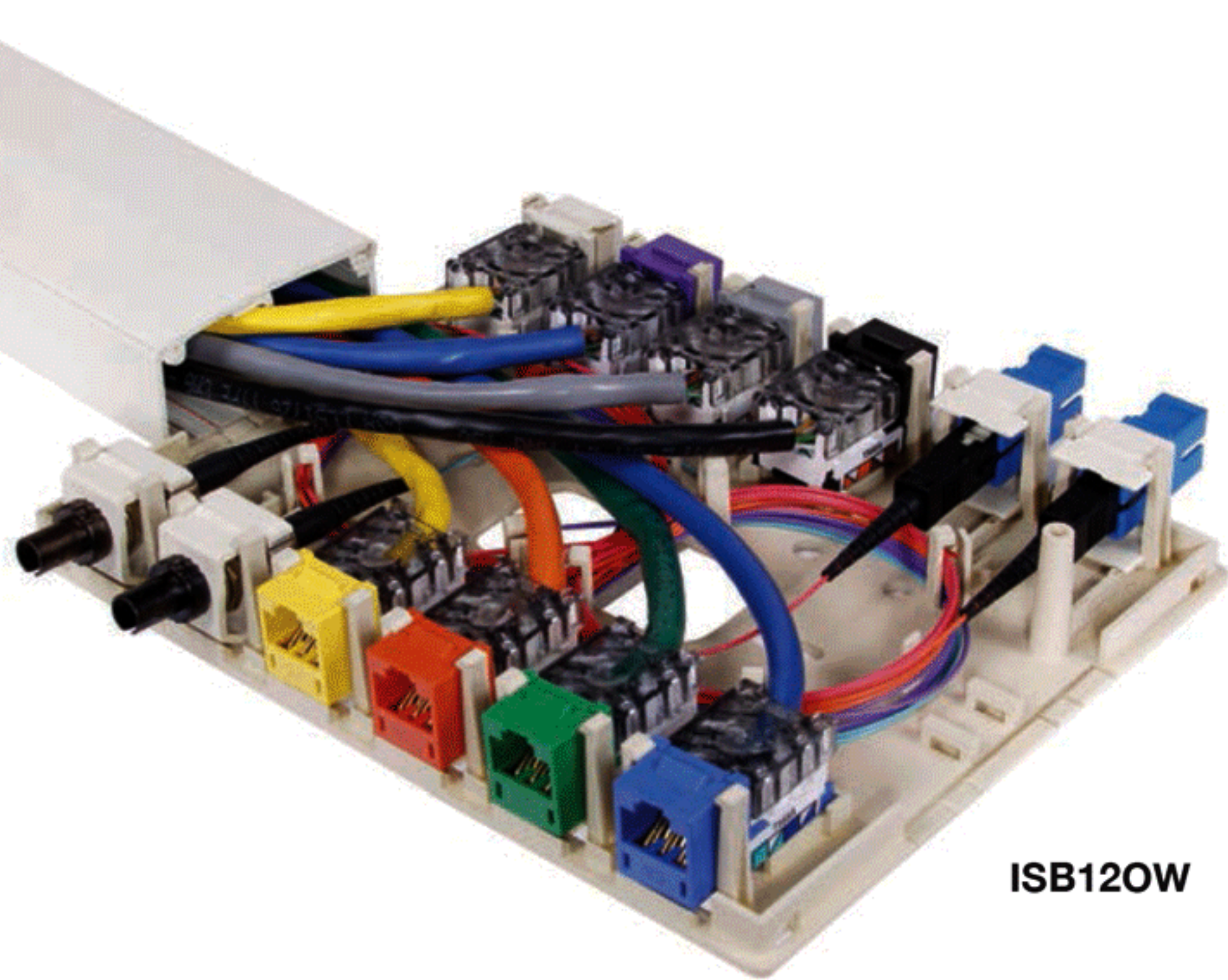




### Specifications

- Low-profile design.
- Accepts XJ jacks, audio video and fiber connectors.
- Provided with double-sided tape and mounting screws for easy installation.
- UL and cUL listed.
- Constructed with a high-impact resistant, flame-retardant polymer.
- ANSI/TIA-606B compliant.



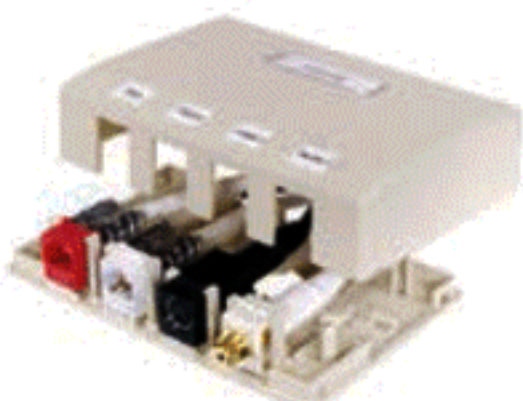
**ISB120W**



**ISB10W**



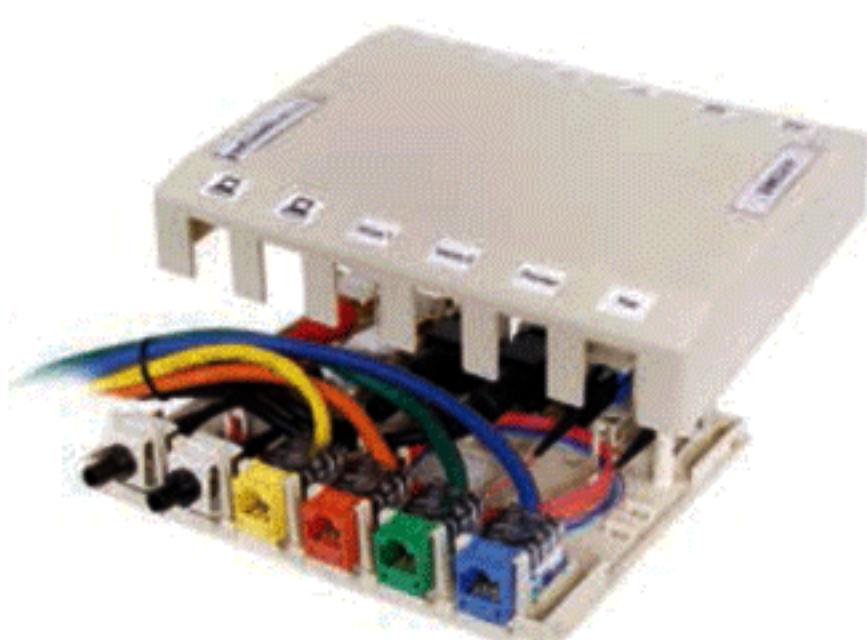
**ISB20W**



**ISB40W**



**ISB60W**



**ISB120W**

### ISB Surface Mount Boxes, 1- and 2-Port

Ideal for open office, compact surface mount environments, and retrofits to support data, voice, and multimedia applications. Can be mounted with supplied surface mounting screws or double-sided adhesive tape.

Color	1-Port Catalog Number	2-Port Catalog Number
Ivory	<b>ISB1EI</b>	<b>ISB2EI</b>
Office White	<b>ISB10W</b>	<b>ISB20W</b>
White	<b>ISB1W</b>	<b>ISB2W</b>

### ISB Surface Mount Boxes, 4- and 6-Port

Ideal for open office MUTOA cabling, compact surface mount environments, and retrofits to support data, voice, and multimedia applications. Features adjustable furniture latches to provide an additional mounting option to common ANSI/TIA/EIA standard furniture openings, and solutions requiring fiber. Box bases feature fiber storage posts that can store one meter fiber cable after termination.

Color	4-Port Catalog Number	6-Port Catalog Number
Ivory	<b>ISB4EI</b>	<b>ISB6EI</b>
Office White	<b>ISB40W</b>	<b>ISB60W</b>
White	<b>ISB4W</b>	<b>ISB6W</b>

### ISB Surface Mount Boxes, 12-Port

Ideal for open office MUTOA cabling, large capacity surface mount applications and retrofits to support data, voice, and multimedia installations. Can be mounted with supplied surface mounting screws or double-sided adhesive tape and mounted to NEMA electric boxes or relay racks.

Color	12-Port Catalog Number
Ivory	<b>ISB12EI</b>
Office White	<b>ISB120W</b>
White	<b>ISB12W</b>