



SystemOne Cover Finishes

SystemOne Recessed FRPT is available in five architectural finishes of brushed brass plated, satin nickel plated, bronze plated finish, brushed aluminum and black powder coat

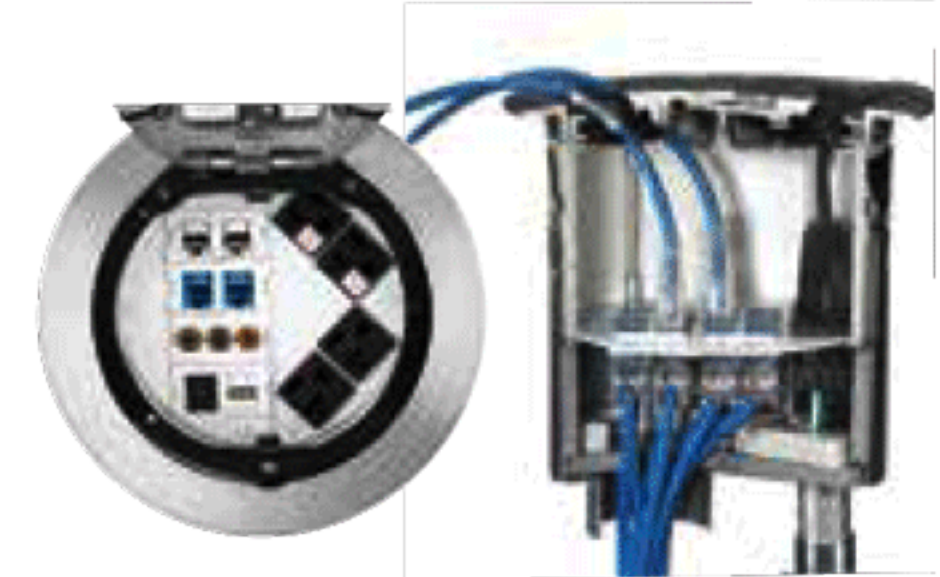
The cast aluminum covers feature a low profile design with a thickness of 0.150" which meets ADA requirements.



Large healthcare facilities include auditoriums and conference rooms where medical seminars, continuing education and meetings are held. To better facilitate these meetings, auditoriums and conference rooms must also accommodate the latest AV technology that include display devices, sound systems, video conferencing and more.

Hubbell SystemOne Six and Eight Inch Recessed Fire-Rated Poke-Throughs

- Recessed connections
- Flush, durable low profile cover in brushed brass plated, satin nickel plated, oil rubbed bronze plated, brushed aluminum and black powder coat
- Large variety of subplates to accommodate various power and data configurations



6-Inch Fire-Rated Poke-Throughs

| Description | Catalog Number |
|--|--------------------|
| Pre-Wired FRPT for Data/AV includes: (2) pre-wired 20A receptacles with 18" leads plus 2 decorator openings including 2" EMT and ¾" EMT, (1) flange and cover assembly | S1R6PTWZxxx |
| FRPT for Furniture Feed Applications (1) 2" EMT, (1) ¾" EMT, (1) flange and cover assembly | S1R6PTFFxxx |
| Through floor fitting including 2" EMT and ¾" EMT | S1R6PTFIT |

8-Inch Fire-Rated Poke-Throughs

| Description | Catalog Number |
|---|---------------------|
| Pre-Wired FRPT for Data/AV includes: (4) pre-wired 20A receptacles with 18" leads plus 3 gangs with 2" EMT for data and AV, (1) flange and cover assembly | S1R8PTZZ3xxx |
| Pre-Wired FRPT for Power includes: (4) pre-wired 20A receptacles with 18" leads plus 2 gangs with 2" EMT and 1" EMT (1) flange and cover assembly | S1R8PTZZ2xxx |
| Through floor fitting including 2" EMT for data and AV | S1R8PTFIT3 |

For finish options, replace xxx: **ALU** (Brushed Aluminum), **BLK** (Black Powder Coat), **BRS** (Brushed Brass, Plated), **BRZ** (Oil Rubbed Bronze, Plated) and **NKL** (Satin Nickel, Plated).



TIA Healthcare Standard TIA-1179 Area: Operations

Communication recommendations for outlet densities

| Area | Workstation | LAN Connections |
|-----------------|--------------|-----------------|
| Conference Room | Med. Station | 6–14 in each WA |

Hubbell Multimedia Connectivity

- Provides for higher capacity application connector count in a smaller footprint
- Allows multiple applications to run over the same horizontal run



HDMI Frame and Jacks

| Description | Catalog Number |
|------------------------------|----------------|
| HDMI decorator frame, 1 port | NS801xx |
| HDMI decorator frame, 2 port | NS802xx |
| HXJ Series Jack, 10GbE | HXJ6Axx |
| HXJ Series Jack, Cat 6 | HXJ6xx |
| HXJ Series Jack, Cat 5e | HXJ5Exx |

For color replace xx with: **AL** (Almond), **BK** (Black), **GY** (Gray), **I** (Ivory), **LA** (Light Almond) or **W** (White)

Couplers and Feed Thrus

| Description | Catalog Number |
|--------------------------------|-----------------|
| Data Coupler, Cat 6 | SFC6BK |
| Data Coupler, Cat 5e | SFC5EBK |
| USB Coupler, A to B, Blue | SFUSBABB |
| USB Coupler, A to A, Blue | SFUSBAAB |
| HDMI Feed Thru Coupler, Black | HDMIC14 |
| HDMI Keystone Feed Thru, Black | SFHC14BK |
| HDMI Keystone Feed Thru, White | SFHC14W |

Hubbell X-End Patch Cords

| Description | 5 ft. | 10 ft. | Application Tail |
|-----------------------------|----------------|----------------|------------------|
| S-Video & 3.5mm | AVS3505 | AVS3510 | AVS35T1 |
| S-Video & 2 RCA | AVSRA05 | AVSRA10 | AVSRAT1 |
| S-Video & 3 RCA | AVSCR05 | AVSCR10 | AVSCRT1 |
| S-Video, 3 RCA w/ L/R Audio | AVSRC05 | AVSRC10 | AVSRCT1 |
| 3 RCA w/ L/R Audio | AVRC05 | AVRC10 | AVRCT1 |
| 3 RCA Video | AVCR05 | AVCR10 | AVCRT1 |
| 3 RCA w/ S/PDIF | AVCRD05 | AVCRD10 | AVCRDT1 |
| 3 RCA & 3.5mm | AVC3505 | AVC3510 | AVC35T1 |
| 5 RCA w/ L/R Audio | AVCAR05 | AVCAR10 | AVCART1 |
| 5-BNC RGBHV | AVB05 | AVB10 | AVBT1 |