

METAL WHILE-IN-USE COVERS

APPLICATIONS

- Designed for use whenever weatherproof protection is required while an outlet is in use.

PRODUCT FEATURES

- Heavy duty die-cast metal construction
- Meets or exceeds Extra Duty® specifications
- Patented Quick-Fit™ keyhole mounting system allows cover installation in under a minute
- Includes gasket and mounting hardware
- Base configuration with patented Knock-Out™ technology for custom fitting
- Premium powdercoat finish
- Lockable tab

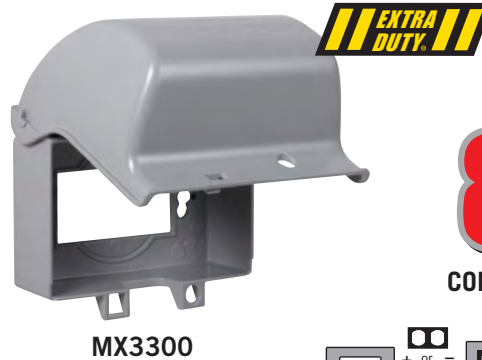
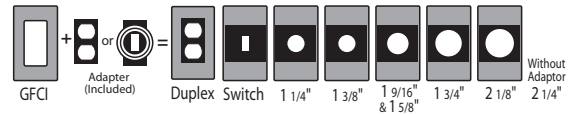
COMPLIANCES

- File E212332
 - 2014 NEC® compliant
 - NEMA 3R rated
- U.S. Patent 8,314,334



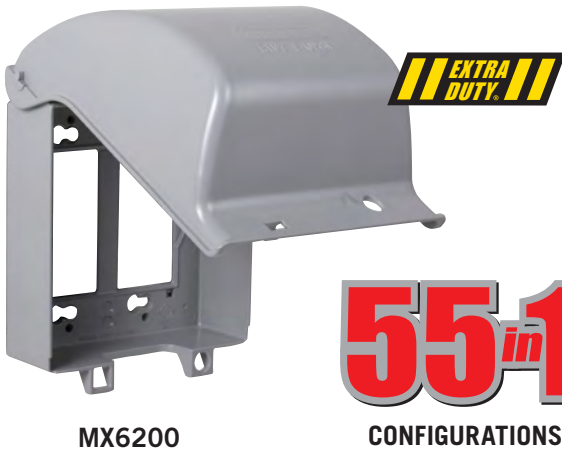
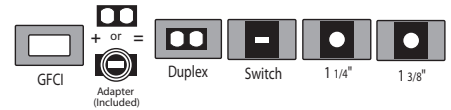
8ⁱⁿ1

CONFIGURATIONS



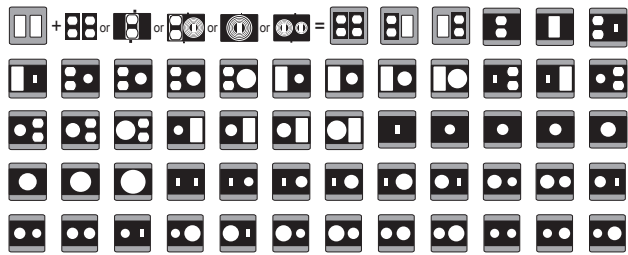
8ⁱⁿ1

CONFIGURATIONS



55ⁱⁿ1

CONFIGURATIONS



Multiple combinations of duplex, GFCI, switch, and rounds: 1 1/4", 1 3/8", 1 9/16", 1 5/8", 1 11/16", 2 1/8", 2 1/4", 2 7/16"

| CATALOG # | DESCRIPTION | DEPTH | COLOR | PKG. TYPE | STD. PKG. | BARCODE |
|----------------------------|-------------------|-------|-------|-----------|-----------|---------|
| Metal In-Use Covers | | | | | | |
| MX3200 | Vertical 8-in-1 | 3.5" | Gray | Shrink | 4 | |
| MX3300 | Horizontal 8-in-1 | 3.5" | Gray | Shrink | 4 | |
| MX6200 | 2-Gang 55-in-1 | 3.5" | Gray | Shrink | 4 | |

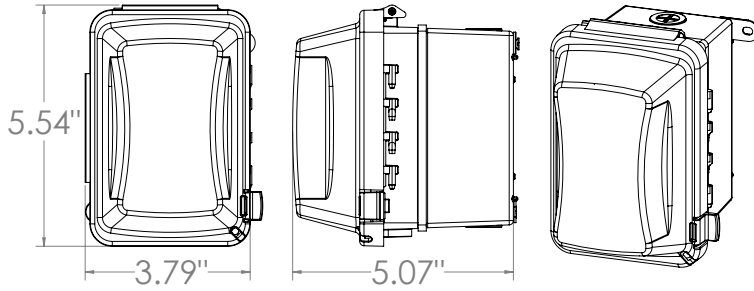
SEE END OF SECTION (PG C20) FOR DETAILED DRAWINGS >>



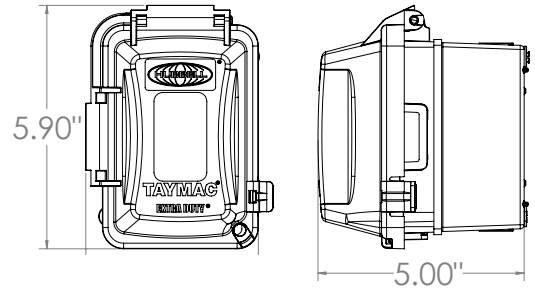
DETAILED DRAWINGS

COMPLETE KITS

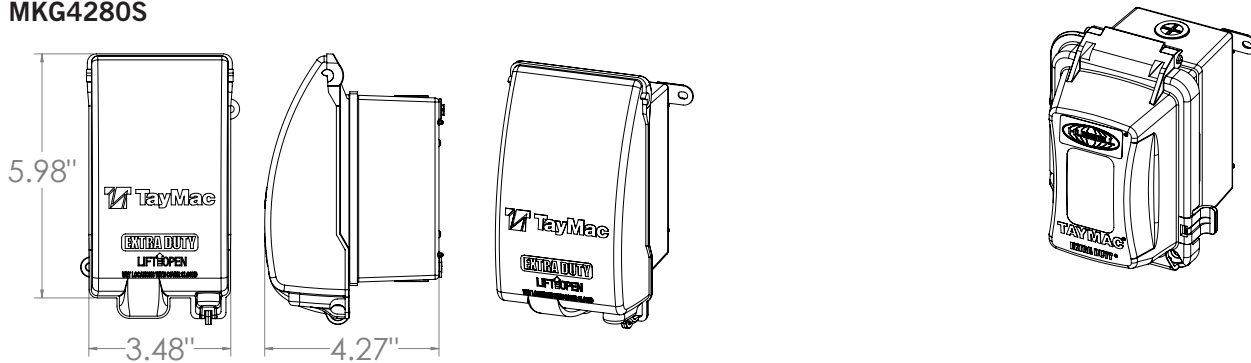
MKG410C



MKG420C

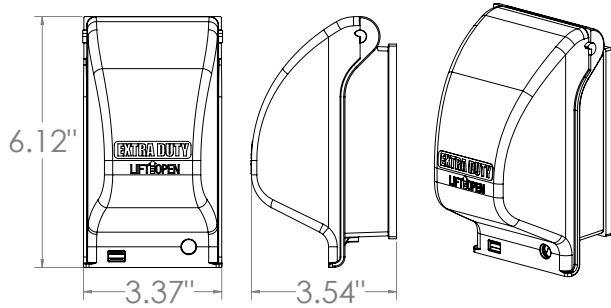


MKG4280S

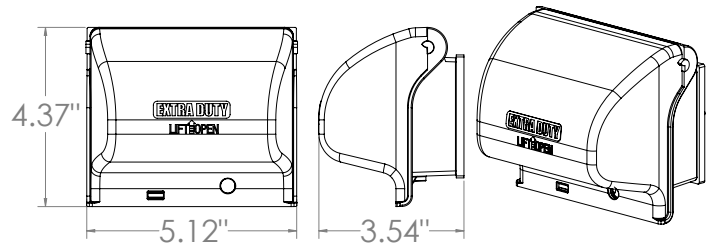


METAL IN-USE COVERS

MX3200



MX3300



MX6200

