



## Clamp-Cover

### Clamp Cover, Type 4



#### Industry Standards

UL 50, 50E Listed; Type 4, 12, 13; File No. E27525  
 cUL Listed per CSA C22.2 No. 94; Type 4, 12, 13; File No. E27525  
 UL 508A Listed; Type 4, 12, 13; File No. E61997  
 cUL Listed per CSA C22.2 No. 94; Type 4, 12, 13; File No. E61997

NEMA/EEMAC Type 4, 12, 13  
 CSA, File No. 42184: Type 4, 12  
 IEC 60529, IP66

#### Application

Clamps on all four sides securely close this enclosure to protect components in indoor or outdoor applications, yet are easy to remove for access and modifications.

#### Specifications

- 16 or 14 gauge steel (see table)
- Seams continuously welded and ground smooth
- Stainless steel clamps on four sides of cover
- Bonding provision on cover
- Oil-resistant gasket
- Weldnuts for mounting optional panels and terminal block kits in size 6.00 x 4.00 in. (152 x 102 mm) and larger
- External wall-mounting brackets

#### Finish

ANSI 61 gray polyester powder paint inside and out

#### Accessories

See also Accessories.

Fast-Operating Clamp-Cover Junction Box Clamp

Panels for Junction Boxes

Junction Box and Wall-Mount Enclosure Swing Out Panel Kit

Terminal Block Kit Assembly for Junction Boxes

#### Modification and Customization

Hoffman excels at modifying and customizing products to your specifications. Contact your local Hoffman sales office or distributor for complete information.

Bulletin: A51NF

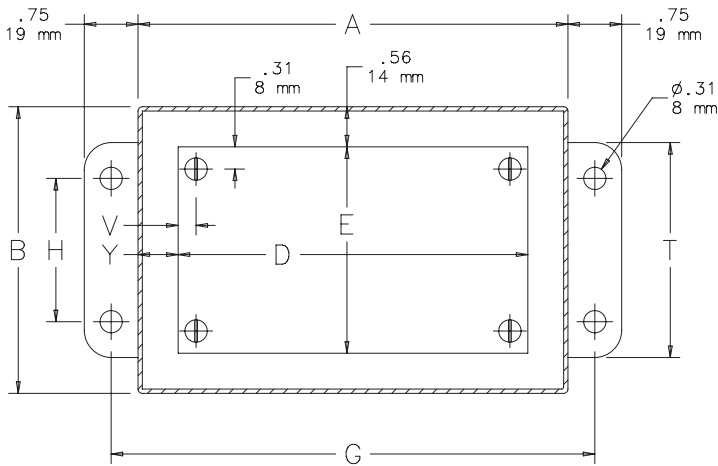
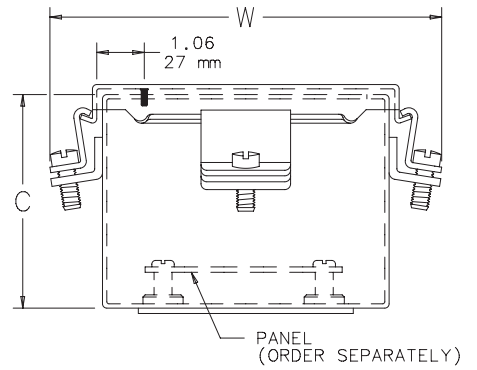
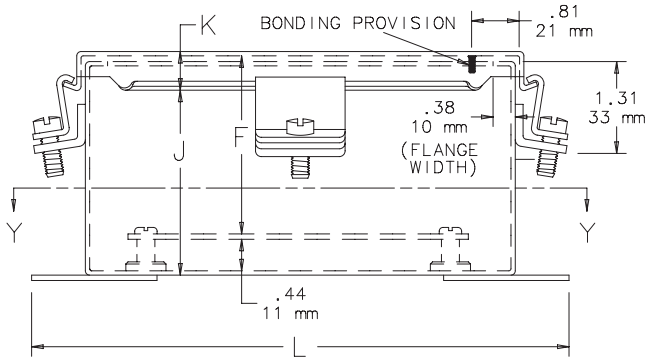
#### Standard Product

Catalog Number	AxBxC in./mm	UL Listed	Gauge	Panel	Conductive Panel	Panel Size	Mounting	Overall									
						D x E in./mm	G x H in./mm	L x W in./mm	F in./mm	J in./mm	K in./mm	M in./mm	N in./mm	T in./mm	V in./mm	Y in./mm	
A404NF	4.00 x 4.00 x 3.00	508A	16	No Panel	No Panel	No Panel	4.75 x 2.00	5.50 x 5.38	—	2.62	0.54	1.38	1.38	3.00	—	—	—
	102 x 102 x 76					No Panel	121 x 51	140 x 137	—	66	14	35	35	76	—	—	
A604NF	6.00 x 4.00 x 3.00	508A	16	A6P4	A6P4G	4.88 x 2.88	6.75 x 2.00	7.50 x 5.38	2.53	2.62	0.54	1.38	2.38	3.00	0.31	0.56	—
	152 x 102 x 76					124 x 73	171 x 51	191 x 137	64	66	14	35	60	76	8	14	
A806NF	8.00 x 6.00 x 3.50	50, 50E	14	A8P6	A8P6G	6.75 x 4.88	8.75 x 4.00	9.50 x 7.38	3.03	3.12	0.56	2.38	3.38	5.00	0.25	0.62	—
	203 x 152 x 89					171 x 124	222 x 102	241 x 187	77	79	14	60	86	127	6	16	
A606NF	6.00 x 6.00 x 4.00	50, 50E	16	A6P6	A6P6G	4.88 x 4.88	6.75 x 4.00	7.50 x 7.38	3.53	3.62	0.54	2.38	2.38	5.00	0.31	0.56	—
	152 x 152 x 102					124 x 124	171 x 102	191 x 187	90	92	14	60	60	127	8	14	
A1008NF	10.00 x 8.00 x 4.00	50, 50E	14	A10P8	A10P8G	8.75 x 6.88	10.75 x 6.00	11.50 x 9.38	3.53	3.62	0.56	3.38	1.50	7.00	0.25	0.62	—
	254 x 203 x 102					222 x 175	273 x 152	292 x 238	90	92	14	86	38	178	6	16	
A1210NF	12.00 x 10.00 x 5.00	50, 50E	14	A12P10	A12P10G	10.75 x 8.88	12.75 x 8.00	13.50 x 11.38	4.53	4.62	0.56	2.00	3.00	9.00	0.25	0.62	—
	305 x 254 x 127					273 x 225	324 x 203	343 x 289	115	117	14	51	76	229	6	16	
A1412NF	14.00 x 12.00 x 6.00	50, 50E	14	A14P12	A14P12G	12.75 x 10.88	14.75 x 10.00	15.50 x 13.38	5.53	5.62	0.56	2.00	3.00	11.00	0.25	0.62	—
	356 x 305 x 152					324 x 276	375 x 254	394 x 340	140	143	14	51	76	279	6	16	
A1614NF	16.00 x 14.00 x 6.00	50, 50E	14	A16P14	A16P14G	14.75 x 12.88	16.75 x 12.00	17.50 x 15.38	5.53	5.62	0.56	3.50	1.50	13.00	0.25	0.62	—
	406 x 356 x 152					375 x 327	425 x 305	445 x 391	140	143	14	89	38	330	6	16	

Purchase panels separately. Optional stainless steel, conductive, composite and aluminum panels are available for most sizes.



### Clamp-Cover



SECTION Y-Y

#### Clamp Bracket Locations

