

INLINE™ LANDSCAPE, TYPE 4 AND 12

INDUSTRY STANDARDS
Solid Door Enclosures:

 UL 508A Listed; Type 3, 4, 12; File No. E61997
 cUL Listed per CSA C22.2 No. 94; Type 3, 4, 12; File No. E61997

 NEMA/EEMAC Type 3, 4, 12
 CSA File Number 42186: Type 4, 12
 IEC 60529, IP66

Window Door Enclosures:

UL 508A Listed; Type 3, 4, 12; File No. E61997

 NEMA/EEMAC Type 12
 CSA File Number 42186: Type 3, 4, 12
 IEC 60529, IP66

APPLICATION

When applications require mounting electrical components the full width of an enclosure, the landscape orientation of this aesthetic INLINE™ Enclosure makes it possible. Full-width mounting brackets can be drilled anywhere along their length, providing maximum mounting flexibility.

SPECIFICATIONS

- Metric dimensions
- 16 gauge steel
- Seams continuously welded and ground smooth
- External formed body flange
- Large body opening
- External wall-mounting brackets
- Seamless foam-in-place gasket
- Bonding provision on door
- Grounding stud on body
- Includes panel mounting screws and grounding hardware
- Hinged door with removable hinge pins
- Self-grounding quarter-turn latches
- Door opens 180 degrees
- Window door models include flush-mounted 3/16-in. (4.8-mm) clear polycarbonate window

FINISH

Textured light-gray RAL 7035 polyester powder coating inside and out

ACCESSORIES

See also *Accessories*.

- DIN Rail or Panel-Mounting Brackets
- DIN3 Rails
- Grounding Kit
- Lock Inserts
- Mounting-Bracket Kit
- Panels for Junction Boxes
- Wing Knob Latch

MODIFICATION AND CUSTOMIZATION

Hoffman excels at modifying and customizing products to your specifications. Contact your local Hoffman sales office or distributor for complete information.

BULLETIN: A54

Standard Product Hinged Solid Door

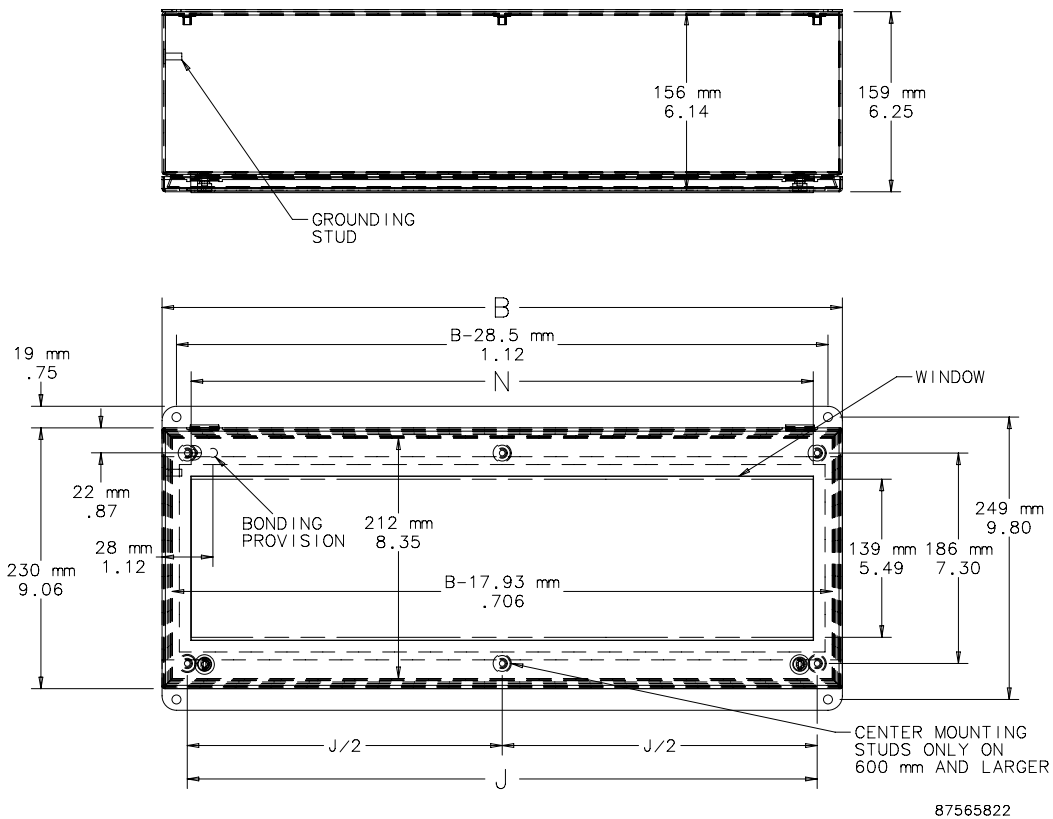
Catalog Number	AxBxC in./mm	Mounting Studs J mm/in.	Clear Space Above Panel mm/in.
LHC233116	9.06 x 12.20 x 6.10 230 x 310 x 155	265 10.45	140 5.51
LHC234616	9.06 x 18.11 x 6.10 230 x 460 x 155	416 16.36	140 5.51
LHC236016	9.06 x 23.62 x 6.10 230 x 600 x 155	556 21.88	140 5.51
LHC237716	9.06 x 30.32 x 6.10 230 x 770 x 155	726 28.57	140 5.51
LHC239316	9.06 x 36.42 x 6.10 230 x 925 x 155	881 34.67	140 5.51

Enclosures are hinged on "B" side.

Purchase panels separately.

Standard Product **Hinged Window Door**

Catalog Number	AxBxC in./mm	Window Size N mm/in.	Mounting Studs J mm/in.	Clear Space Above Panel mm/in.
LWC233116	9.06 x 12.00 x 6.10 230 x 310 x 155	259 10.20	265 10.45	140 5.51
LWC234616	9.06 x 18.11 x 6.10 230 x 460 x 155	409 16.11	416 16.36	140 5.51
LWC236016	9.06 x 23.62 x 6.10 230 x 600 x 155	549 21.62	556 21.88	140 5.51
LWC237716	9.06 x 30.32 x 6.10 230 x 770 x 155	719 28.31	726 28.57	140 5.51
LWC239316	9.06 x 36.42 x 6.10 230 x 925 x 155	874 34.42	881 34.67	140 5.51



OPTIONAL COMPONENTS SELECTION TABLE

This table shows which optional components will fit the various sizes of **INLINE™ Landscape, Type 4 and 12**.

BULLETIN: A54

Catalog Number	AxBxC in./mm	Window Door Enclosure	Panel	Conductive Panel	DIN Rail or Panel Mounting Bracket
LHC233116	9.06 x 12.20 x 6.10 230 x 310 x 155	LWC233116	LP2331	LP2331G	LMK23
LHC234616	9.06 x 18.11 x 6.10 230 x 460 x 155	LWC234616	LP2346	LP2346G	LMK23
LHC236016	9.06 x 23.62 x 6.10 230 x 600 x 155	LWC236016	LP2360	LP2360G	LMK23
LHC237716	9.06 x 30.32 x 6.10 230 x 770 x 155	LWC237716	LP2377	LP2377G	LMK23
LHC239316	9.06 x 36.42 x 6.10 230 x 925 x 155	LWC239316	LP2393	LP2393G	LMK23

The catalog numbers in the first column are solid door enclosures.

600-mm and wider enclosures require two sets of brackets for mounting panels.