

Class I, Div. 1 & 2, Groups B,C,D[Ⓢ]
Class I, Zones 1 & 2, Groups IIB, IIA
Class II, Div. 1 & 2, Groups E,F,G
Class III
NEMA 3, 4, 4X, 7(B,C,D) 9(E,F,G)

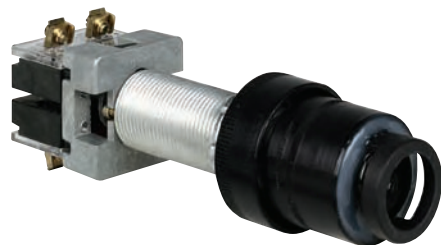
See Area Classification Chart
page C40 for Details

 Listed - File E12379

 Certified - File LR11714
See files for details or call Killark.





Pilot Light








Illuminated Button

FEATURES-SPECIFICATIONS

G PILOT LIGHTS					
CATALOG NUMBER [Ⓢ]			COLOR	CONTACT TYPE [Ⓢ]	NAMEPLATE MARKING [Ⓢ]
SHORT [Ⓢ]	LONG	EXTENDED			
G023-A23C	GOB3-A23C N34	GOL3A	Amber	 110-120 Volts Full Volts	Blank
G023-B23C	GOB3-B23C N34	GOL3B	Blue		Blank
G023-C23C	GOB3-C23C N34	GOL3C	Clear		Blank
G023-F23C	GOB3-F23C N34	GOL3F	Frosted		Blank
G023-G23C	GOB3-G23C N34	GOL3G	Green		Blank
G023-R23C	GOB3-R23C N34	GOL3R	Red		Blank

G PILOT LIGHTS WITH LED 110 VOLT LAMPS					
—	GOB3-A23C N34 LED	GOL3A LED	Amber	 110-120 Volts Full Volts (LED)	Blank
—	GOB3-G23C N34 LED	GOL3G LED	Green		Blank
—	GOB3-R23C N34 LED	GOL3R LED	Red		Blank

G ILLUMINATED BUTTON OR PUSH TO TEST PILOT LIGHT					
—	GOB4-A233C N34	GOL4A3	Amber	 110-120 Volts Full Volts	Blank
—	GOB4-B233C N34	GOL4B3	Blue		Blank
—	GOB4-C233C N34	GOL4C3	Clear		Blank
—	GOB4-F233C N34	GOL4F3	Frosted		Blank
—	GOB4-G233C N34	GOL4G3	Green		Blank
—	GOB4-R233C N34	GOL4R3	Red	 110-120 Volts No Contact Blocks	Blank
—	GOB4-A230C N34	GOL4A	Amber		Blank
—	GOB4-B230C N34	GOL4B	Blue		Blank
—	GOB4-C230C N34	GOL4C	Clear		Blank
—	GOB4-F230C N34	GOL4F	Frosted		Blank
—	GOB4-G230C N34	GOL4G	Green		Blank
—	GOB4-R230C N34	GOL4R	Red		Blank

G ILLUMINATED BUTTON OR PUSH TO TEST PILOT LIGHT WITH LED 110 VOLT LAMPS					
—	GOB4-A233C N34 LED	GOL4A3 LED	Amber	 110-120 Volts Full Volts (LED)	Blank
—	GOB4-G233C N34 LED	GOL4G3 LED	Green		Blank
—	GOB4-R233C N34 LED	GOL4R3 LED	Red		Blank
—	GOB4-A230C N34 LED	GOL4A LED	Amber	 110-120 Volts (LED) No Contact Blocks	Blank
—	GOB4-G230C N34 LED	GOL4G LED	Green		Blank
—	GOB4-R230C N34 LED	GOL4R LED	Red		Blank

[Ⓢ] Refer to catalog page C30 to select proper operator for enclosure, pages C38 & C39 for accessories, page C30 for complete details on Area Classification of operators, page C42 for Dimensional information.

[Ⓢ] Nameplates are double sided.

[Ⓢ] Contact Blocks are shown in their normal position.

[Ⓢ] Short style operators are suitable for Class I Group C & D, Class II Group E,F,G only.

