



GUF-2

GUF-8

GUM-2

GUML-2

UNF2

UNY4

UNY2

GUML-2M

Female to Female

Male to Female

90° Elbow Union

- GUF/GUM/UNF/UNY 1/2", 3/4", & 1" Class I, Div. 1 & 2, Groups A,B,C,D Class I, Zone I, IIC, IIB, IIA Class I, Zone 1, Groups IIC, IIB, IIA Class II, Div. 1 & 2, Groups E,F,G Class III
- GUF/GUM/UNF/UNY 1-1/4" through 4" Class I, Div. 1 & 2, Groups C,D Class I, Zone I, IIB, IIA Class I, Zone 1, Groups IIB, IIA Class II, Div. 1 & 2, Groups E,F,G Class III

Listed File No. E 10514

Certified File No. LR11716

FEATURES-SPECIFICATIONS

Applications

- UNY and UNF unions are used to connect two pieces of conduit or attach conduit to junction boxes, fittings, or devices
- Permits removal of equipment without turning or removal of conduit

Features

- Threaded for rigid conduit or IMC
- Tapered threads (NPT)
- Strong and durable construction

Material/Finish

Copper-free Aluminum — 1/2"- 4" (less than 4/10 of 1%)

- Natural Finish

Iron — 1-1/4"- 4"

Steel — 1/2", 3/4", 1"

- Zinc electro-plate

Third-Party Standards

- UL Standard 886
- CSA Standard C22.2 No. 30

For ATEX and IECEx certified unions, add suffix - EX to the catalog number.

Example: GUF-1-EX

File nos. ITS09ATEX16417U

IECExITS09.0024U



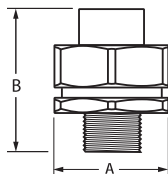
FEMALE TO FEMALE				
CATALOG NUMBER		HUB SIZE	DIMENSIONS	
KILLARK ALUM.	DURALOY IRON		A DIAMETER	B LENGTH
GUF-1	UNF1	1/2"	1-1/2"(38)	1-7/8"(48)
GUF-2	UNF2	3/4"	1-3/4"(44)	1-15/16"(49)
GUF-3	UNF3	1"	2"(51)	2-7/16"(62)
GUF-4	UNF4	1-1/4"	2-3/8"(60)	2-1/2"(63)
GUF-5	UNF5	1-1/2"	2-5/8"(67)	2-1/2"(63)
GUF-6	UNF6	2"	3-1/4"(82)	2-5/8"(67)
GUF-7	UNF7	2-1/2"	4-1/2"(114)	3-3/32"(78)
GUF-8	UNF8	3"	5-3/8"(136)	3-1/16"(78)
GUF-9	UNF9	3-1/2"	6-1/4"(159)	3-9/16"(90)
GUF-0	UNF0	4"	6-1/4"(159)	3-9/16"(90)

MALE TO FEMALE				
CATALOG NUMBER		HUB SIZE	A DIAMETER	B LENGTH
GUM-1	UNY1	1/2"	1-1/2"(38)	2-3/16"(55)
GUM-2	UNY2	3/4"	1-3/4"(44)	2-3/8"(60)
GUM-3	UNY3	1"	2"(51)	2-3/4"(70)
GUM-4	UNY4	1-1/4"	2-3/8"(60)	2-15/16"(75)
GUM-5	UNY5	1/2"	2-5/8"(67)	2-15/16"(75)
GUM-6	UNY6	2"	3-1/4"(82)	3-1/4"(82)
GUM-7	UNY7	2-1/2"	4-1/2"(114)	4-9/32"(109)
GUM-8	UNY8	3"	5-3/8"(136)	4-1/4"(108)
GUM-9	UNY9	3-1/2"	6-1/4"(159)	4-1/2"(114)
GUM-0	UNY0	4"	6-1/4"(159)	4-1/2"(114)

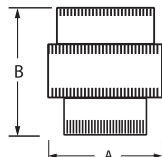
90° ANGLE UNION					
CATALOG NUMBER		HUB SIZE	DIMENSIONS		
KILLARK ALUM.	DURALOY IRON		A	B	C
GUML-1	GUML-1M	1/2"	2-1/2"(64)	1-1/2"(38)	1-3/4"(44)
GUML-2	GUML-2M	3/4"	2"(51)	1-1/2"(38)	1-5/8"(42)

© UL & CSA suitable for Class I, Groups A, B, C, D.

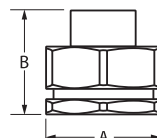
Dimensions



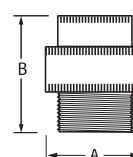
UNY



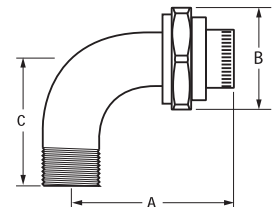
GUF



UNF



GUM



GUML



KILLARK®