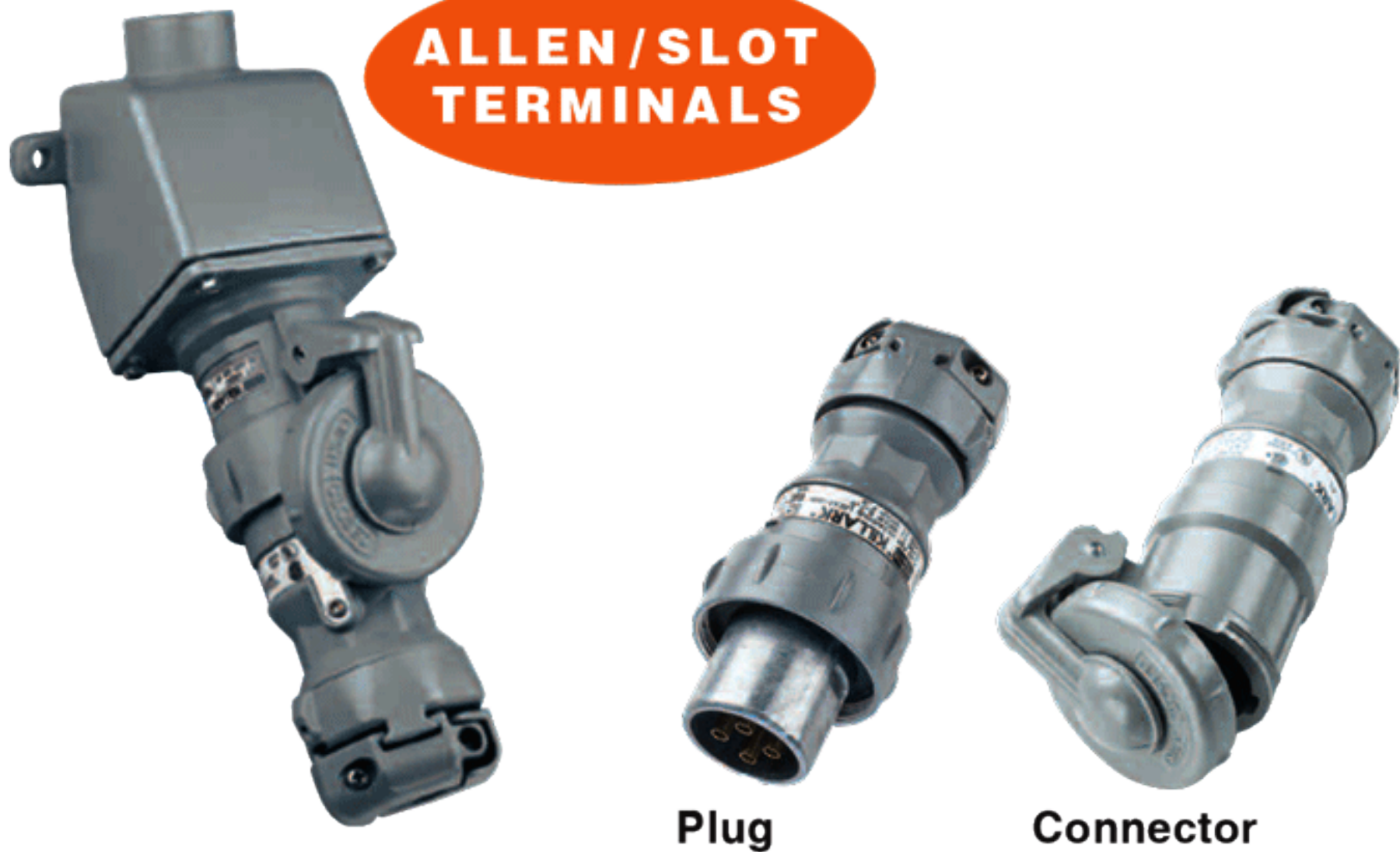


**ALLEN/SLOT
TERMINALS**



Plug

Connector

- 30 Amp 600VAC/250VDC; 50-400 Hertz NEMA 3, 4, 4X①
- **PLUGS ONLY**②:
 Class I, Div. 1 & 2, Groups B,C,D; NEMA 7 B,C,D
 Class I, Zones 1 & 2, IIB+H₂, IIA
 Class II, Div. 1 & 2, Groups F & G; NEMA 9 F,G; Class III

Wire Range

Regular Stranding: #10 - #6

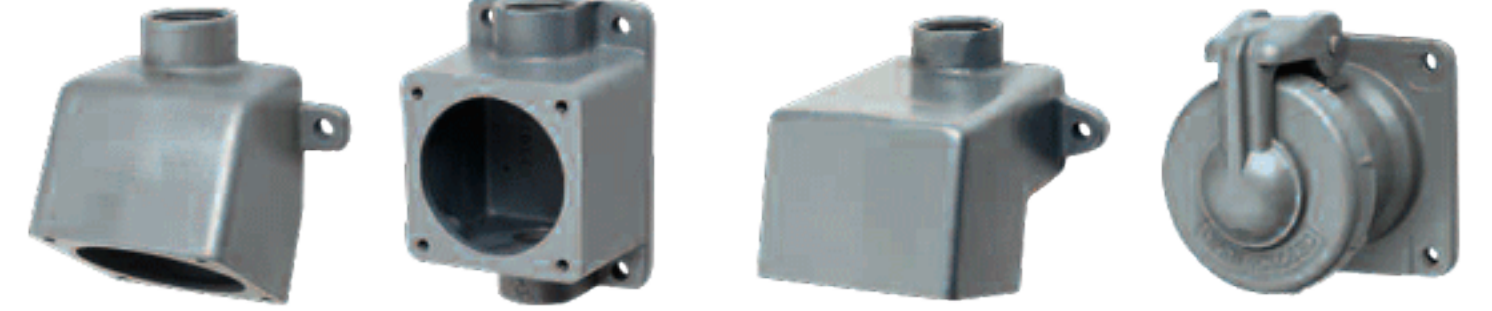
Extra flex: #10 - #8



File No. E10757



Certified File No. LR111846



E

C

D

Receptacle

FEATURES-SPECIFICATIONS

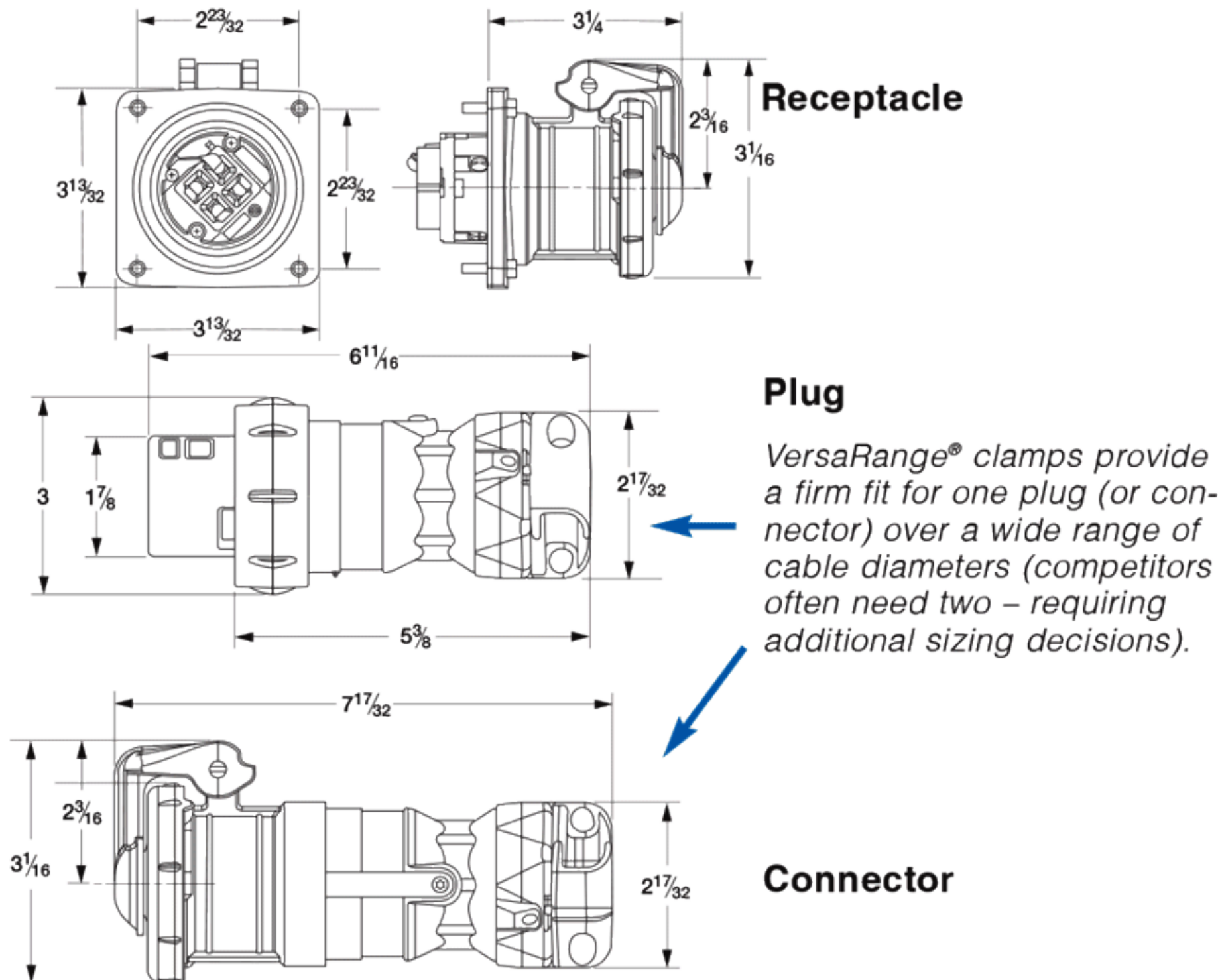
30 AMP PLUGS & CONNECTORS WITH ALLEN TERMINALS 5/32"				
GROUND STYLE	CIRCUIT	GROMMET RANGE	CATALOG NUMBER	
			PLUG	CONNECTOR
Style I	2W2P	.55 - 1.20 IN	VP3022	VPR3022
	3W3P	.55 - 1.20 IN	VP3033	VPR3033
	4W4P	.55 - 1.20 IN	VP3044	VPR3044
Style II	2W3P	.55 - 1.20 IN	VP3023	VPR3023
	3W4P	.55 - 1.20 IN	VP3034	VPR3034

MODIFICATIONS*	
CATALOG NUMBER	DESCRIPTION
S39	Reverse service for receptacles, plugs & connectors
S37	Polarization for receptacles, plugs & connectors

*See page 3 for more information on these options.

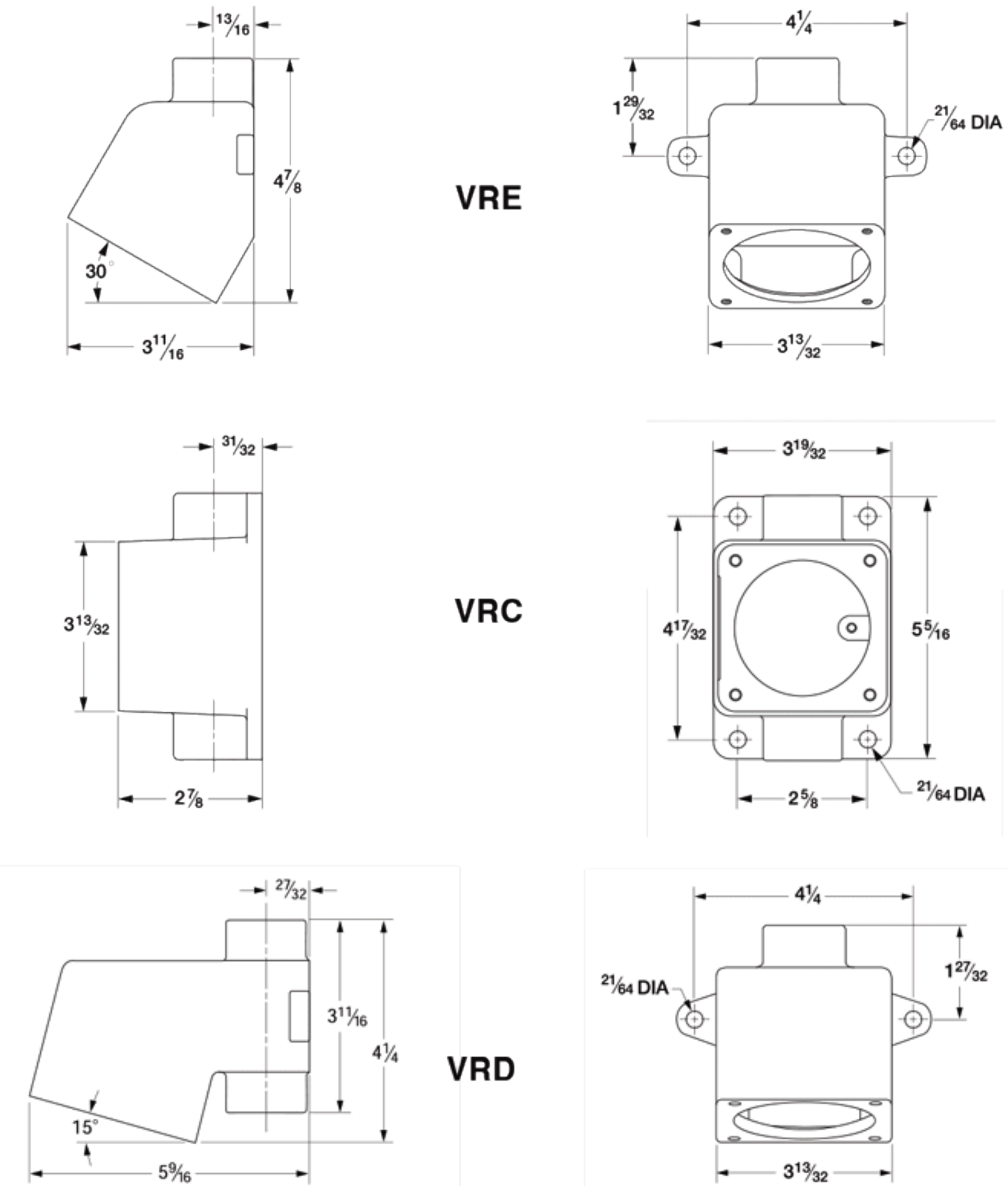
30 AMP RECEPTACLES & BACK BOXES WITH ALLEN TERMINALS 5/32"					
GROUND STYLE	CIRCUIT	CATALOG NUMBER			
		E③ TYPE	C③ TYPE	D③ TYPE	RECEPTACLE ONLY
Style I	2W2P	VR3022E2	VR3022C2	VR3022D2	VR3022
	3W3P	VR3033E2	VR3033C2	VR3033D2	VR3033
	4W4P	VR3044E2	VR3044C2	VR3044D2	VR3044
Style II	2W3P	VR3023E2	VR3023C2	VR3023D2	VR3023
	3W4P	VR3034E2	VR3034C2	VR3034D2	VR3034
Splice box only③		VRE23	VRC23	VRD23	-

③ 30 Amp Back Boxes are available in 1/2", 3/4" and 1" conduit sizes. Size listed for 3/4". For other available sizes, change the BOLD "2" in either the assembly or box only number to: **1** = 1/2", **2** = 3/4", **3** = 1". Assembly catalog numbers are listed for ease of ordering or specification and devices are shipped as components.



Plug
 VersaRange® clamps provide a firm fit for one plug (or connector) over a wide range of cable diameters (competitors often need two – requiring additional sizing decisions).

Back Box Dimensions



① Components are interchangeable & UL classified with other UL1686 configured devices (when installed in accordance with instructions furnished with device). Assemblies containing components from other manufacturers would have the NEMA type rating of the lowest rated device.

② Plugs are hazardous suitable when mated with properly rated receptacles configured to use UL1686 type plugs, such as VersaMate VSQ/VBQ.
 – Note, 2, 3 & 4 pole device dimensions are the same.