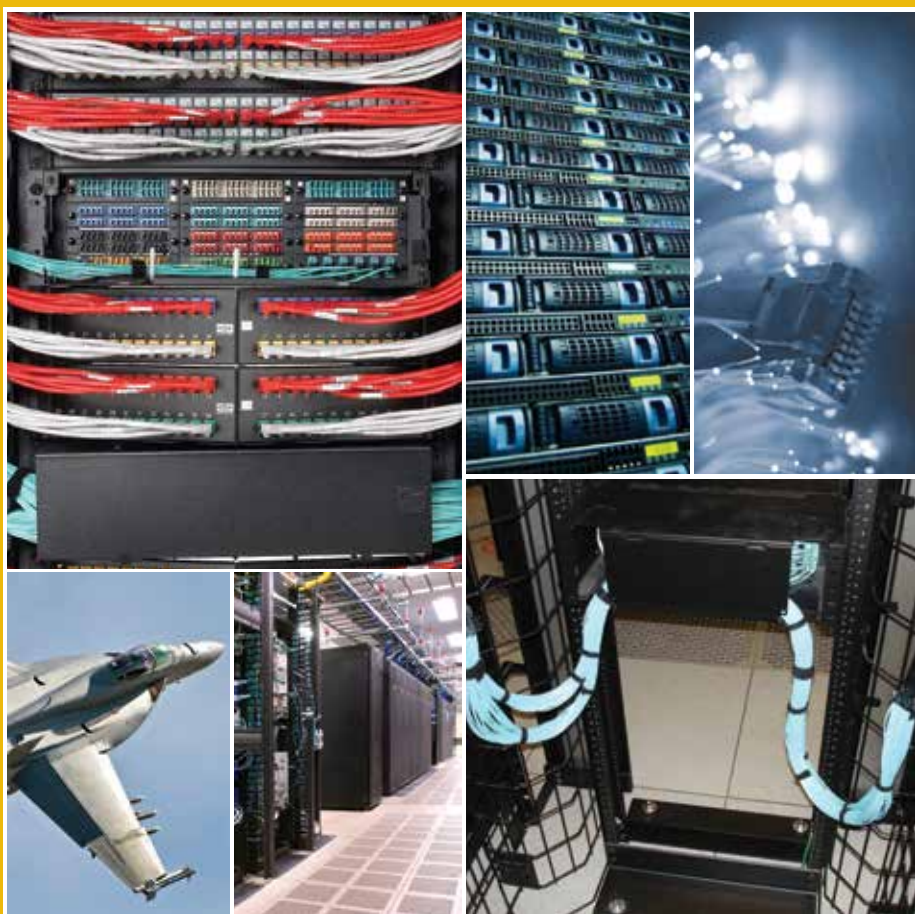




FIBER | Connectivity

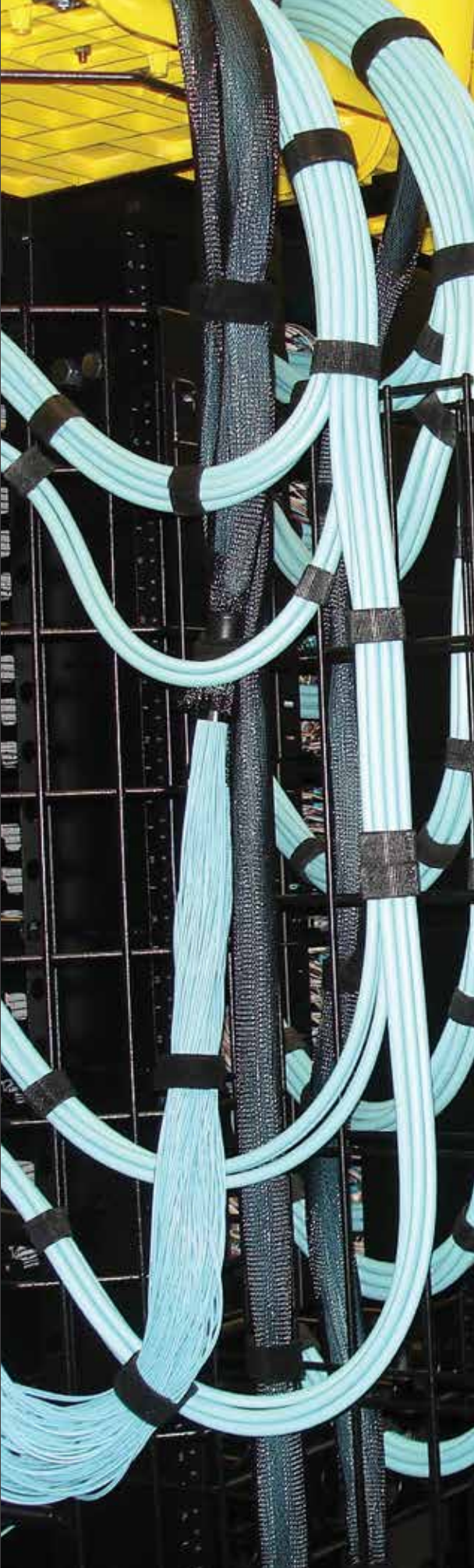
Hubbell optical fiber connectivity products offer a modular, standards-compliant solution for enterprise and data center cabling infrastructure. This section features high performance PROclick® pre-polished connectors, fusion splice connectors, adapters and keystone snap fittings. FSP Series panels and OC Series pre-terminated cassettes complete the end-to-end solution with a full range of densities, fiber types and adapter options.

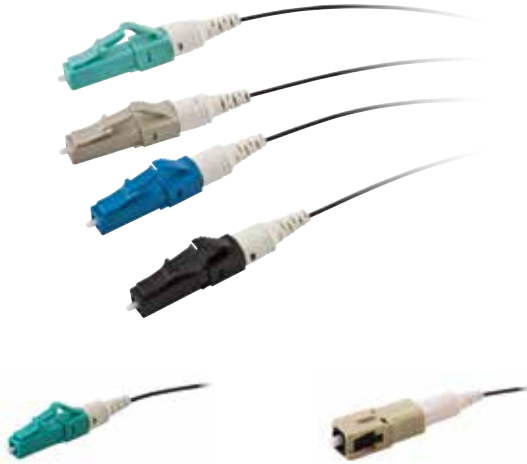




FIBER | Connectivity

Pre-Polished Connectors.....	G3
Fusion Splice Connectors.....	G4
Adhesive and Crimp Style Connectors	G5
Keystone Adapter Snap Fittings	G6
LC and SC Adapters.....	G7
Specialty Adapters.....	G8
MPO Cassettes and 12-Fiber Cords.....	G9
FSP Adapter Panels	G10
OPNL Panels and FTR Trays.....	G12
Termination Tools and Accessories.....	G13
Keyed LC Products	G15





LC Pre-Polished
FCLC900K50GM12

SC Pre-Polished
FCSC900K62M12

2CLICK® ST
FCSTSM12

PROclick® ST
FCST900KSM12

Standards

- ANSI/TIA-568.3-D
- TIA-604-FOCIS
- Telcordia GR-326-CORE

Pre-Polished Connectors

900/250 μM cable, 10mm cleave length

LC PROclick®

Color	Fiber Type	12-Pack	100-Pack
Aqua	50μM, OM3/OM4	FCLC900K50GM12	FCLC900K50GM100
Beige	62.5μM, OM1	FCLC900K62M12	FCLC900K62M100
Black	50μM, OM2	FCLC900K50M12	FCLC900K50M100
Blue	SM, OS2	FCLC900KSM12	FCLC900KSM100
Green	-	-	-

ST 2Click®

Color	Fiber Type	12-Pack
Aqua	50μM, OM3/OM4	FCST50GM12
Beige	62.5μM, OM1	FCST62M12
Black	50μM, OM2	FCST50M12
Blue	SM, OS2	FCSTSM12

SC PROclick®

Fiber Type	12-Pack	100-Pack
50μM, OM3/OM4	FCSC900K50GM12	FCSC900K50GM100
62.5μM, OM1	FCSC900K62M12	FCSC900K62M100
50μM, OM2	FCSC900K50M12	FCSC900K50M100
UPC SM, OS2	FCSC900KSM12	FCSC900KSM100
APC SM, OS2	FCSC900KASM12	-

ST PROclick®

Fiber Type	12-Pack
50μM, OM3/OM4	FCST900K50GM12
62.5μM, OM1	FCST900K62M12
-	-
SM, OS2	FCST900KSM12

Fiber Cleaver

Description	Catalog No.
Multimode only	OFCLV3
SM or MM fiber, CT-30 style, with case	OFCLV4
SM or MM fiber, precision, with case	OFCLV5

Universal Fiber Strip Tool

Description	Catalog No.
900 micron buffered 250 fiber acrylate buffer, loose tube and PVC jackets	OFSTRIP2

Visual Fault Locator (ST, SC, LC)

Description	Catalog No.
Visual fault locator	OFVFLKT1

TIP: Use a VFL during termination for optimum test results.

Four Easy Termination Steps



Strip



Wipe



Cleave



Insert and Click

Note: See page G14 for termination tools and accessories. Cleave tool OFCLV3 is suitable for multimode only. Visual Fault locator OFVFLKT1 recommended during termination. Precision cleave tool OFCLV4 or OFCLV5 is required for singlemode terminations. Use a precision cleave tool for optimum performance.



Standards

- ANSI/TIA-568.3-D
- TIA-604-FOCIS
- Telcordia GR-326-CORE

LC Fusion Splice-On
FCLCF900M50G6PK

SC Fusion Splice-On
FCSCF900M626PK

Fusion Splice Heat Shrink Oven
FCSPLHSOVEN

Fusion Splice Connector Fixture
FCSPFXTA

Fusion Splice-On Connectors

6-Pack

Fiber Type	LC	SC	ST-Style	FC
Multimode 62.5 (OM1)	FCLCF900M626PK	FCSCF900M626PK	FCSTF900M626PK	FCFCF900M626PK
Multimode 50 (OM2)	FCLCF900M506PK	FCSCF900M506PK	FCSTF900M506PK	FCFCF900M506PK
Multimode 50 (OM3)	FCLCF900M50G6PK	FCSCF900M50G6PK	FCSTF900M50G6PK	FCFCF900M50G6PK
Singlemode UPC (OS2)	FCLCF900SM6PK	FCSCF900SM6PK	FCSTF900SM6PK	FCFCF900SM6PK
Singlemode APC (OS2)	-	FCSCF900SMA6PK	-	FCFCF900SMA6PK

Note: Pack of 6 connectors, each in a protective capsule with cleave protector, extended dust cap, 900µm boot and splice sleeve. Compatible with fusion splicers having a removable fiber holder. See application chart below. Metal holder fixture required (sold separately). See application table below. Hubbell fusion splice heat shrink oven, Catalog Number FCSPLHSOVEN is also required for termination.

Fusion Splice Heat Shrink Oven

Catalog No.

FCSPLHSOVEN

Metal Splice Connector Fixture Application Chart

Fusion Splicer Manufacturer	Fusion Splicer Model No.	Splice-On Connectors Supported (900µ)	Metal Connector Fixture Catalog No.
AFL/Fujikura	FSM-11 (S/M)	LC, SC, ST, FC	FCSPFXSTAR
	FSM-12S		FCSPFXTA
	FSM-17S	LC, SC	
	FSM-18S, FSM-60 (S/R)	LC, SC, ST	
Furukawa/Fitel®	S122 (A/C/M)	LC, SC, ST, FC	FCSPFXTF
	S121 (A/M)		
	S123 (C/M), S153, S178A, S178A		
Sumitomo®	Type-25e (U/S/M)	LC, SC, ST, FC	FCSPFXTS
	Type-39FH		
	Type-46, 66		
	Quantum (Q101-CA)		
INNO™	IFS 10, IFS 15	LC, SC, ST, FC	FCSPFXTI
Greenlee®	910 FS	LC, SC, ST, FC	FCSPFXTG
FIS	SUPER COUGAR	LC, SC, ST, FC	FCSPFXTFIS

Sumitomo is a registered trademark of Sumitomo Electric Lightwave. Fitel is a registered trademark of Furukawa Electric Co., LTD. INNO is a trademark of INNO Instrument Inc. Greenlee is a registered trademark of Greenlee Textron Inc.



SC Adhesive
FCSCM12R
FCSCS12R



ST and SC Crimp
FCSTM12R
FCSTS12R



LC Adhesive
FCLCMM



Crimp Insert and 3mm Boot
FCLCXX
OFPCRKXX

Adhesive Connectors

900µm termination

	SC		ST-Style	
Mode	12-Pack	100-Pack	12-Pack	100-Pack
Multimode	FCSCM12R	FCSCM100R	FCSTM12R	FCSTM100R
Singlemode	FCSCS12R	FCSCS100R	FCSTS12R	FCSTS100R

LC Simplex Adhesive Connectors

900µm termination, LC connector, white boot and dust cap

Mode	6-Pack
Multimode	FCLCMM
Singlemode	FCLCSM

Crimp Style Non-Adhesive Connectors

900µm termination

	SC		ST-Style	
Mode	12-Pack	100-Pack	12-Pack	100-Pack
Multimode	FCSCMQ12R	FCSCMQ100R	FCSTMQ12RA	FCSTMQ100R
Singlemode	FCSCSQ12R	FCSCSQ100R	FCSTSQ12R	FCSTSQ100R

Note: Includes 1 connector, dust cap, black boot (MM) or yellow boot (SM), and crimp insert.

Crimp Inserts

Mode	12-Pack	100-Pack
Multimode/singlemode	FCCI12	FCCI100

Crimp Rings/3mm Boots

(25) crimp sleeves and boots

Description	Catalog No.
Multimode	OFPCRKM
Singlemode	OFPCRKS

Note: SC/ST-style Hubbell OptiChannel connectors for 3mm jacketed cables, black boot (MM) or yellow boot (SM).

Note: OFCMT04 crimp tool required for SC and ST crimp or adhesive termination. See page G14 for termination tools and accessories sold separately.



LC Duplex, Flush Mount
SFFLCBW



SC Simplex, Flush Mount
SFFSCBOW



ST Simplex, Standard
SFSTOW



MT-RJ Flush Mount
FAMTRJK



SC Simplex, Standard
SFSCAOW

LC Duplex Keystone Adapters

Housing Color	Flush Mount		Standard	
	Phosphor Bronze	Zirconia Ceramic	Phosphor Bronze	Zirconia Ceramic
Almond	SFFLCxxAL	SFFLCSxxAL	SFLCxxAL	SFLCSxxAL
Black	SFFLCxxBK	SFFLCSxxBK	SFLCxxBK	SFLCSxxBK
Gray	SFFLCxxG	SFFLCSxxG	SFLCxxG	SFLCSxxG
Ivory	SFFLCxxEI	SFFLCSxxEI	SFLCxxEI	SFLCSxxEI
Light Almond	SFFLCxxLA	SFFLCSxxLA	SFLCxxLA	SFLCSxxLA
Office White	SFFLCxxOW	SFFLCSxxOW	SFLCxxOW	SFLCSxxOW
White	SFFLCxxW	SFFLCSxxW	SFLCxxW	SFLCSxxW

xx = Adapter Color: **AQ** (Aqua), **BE** (Beige), **BK** (Black), **B** (Blue), **GN** (Green), **OR** (Orange), **R** (Red), and **Y** (Yellow).
 Note: Any green zirconia LC or SC adapter is suitable for APC applications.

SC Simplex Keystone Adapters

Housing Color	Flush Mount		Standard	
	Phosphor Bronze	Zirconia Ceramic	Phosphor Bronze	Zirconia Ceramic
Almond	SFFSCxxAL	SFFSCSxxAL	SFSCxxAL	SFSCSxxAL
Black	SFFSCxxBK	SFFSCSxxBK	SFSCxxBK	SFSCSxxBK
Gray	SFFSCxxG	SFFSCSxxG	SFSCxxG	SFSCSxxG
Ivory	SFFSCxxEI	SFFSCSxxEI	SFSCxxEI	SFSCSxxEI
Light Almond	SFFSCxxLA	SFFSCSxxLA	SFSCxxLA	SFSCSxxLA
Office White	SFFSCxxOW	SFFSCSxxOW	SFSCxxOW	SFSCSxxOW
White	SFFSCxxW	SFFSCSxxW	SFSCxxW	SFSCSxxW

ST-Style to SC Simplex Keystone Adapters

Housing Color	Phosphor Bronze	Zirconia Ceramic
Almond	SFSCSTAL	SFSCSTSAL
Black	SFSCSTBK	SFSCSTSBK
Gray	SFSCSTG	SFSCSTSG
Ivory	SFSCSTEI	SFSCSTSEI
Light Almond	SFSCSTLA	SFSCSTSLA
Office White	SFSCSTOW	SFSCSTSOW
White	SFSCSTW	SFSCSTSW

Note: Adapter is blue

ST-Style Keystone Adapters

Housing Color	Phosphor Bronze	Zirconia Ceramic
Almond	SFSTAL	SFSTSAL
Black	SFSTBK	SFSTSBK
Gray	SFSTG	SFSTSG
Ivory	SFSTEI	SFSTSEI
Light Almond	SFSTLA	SFSTSLA
Office White	SFSTOW	SFSTSOW
White	SFSTW	SFSTSW

Note: Adapter is black oxide

MT-RJ Keystone Adapters

Housing Color	Flush Mount	Standard
Almond	FAMTRJKAL	SFMTRJxxAL
Black	FAMTRJKBK	SFMTRJxxBK
Gray	FAMTRJKGY	SFMTRJxxG
Ivory	FAMTRJKEI	SFMTRJxxEI
Light Almond	FAMTRJKLA	SFMTRJxxLA
Office White	FAMTRJK	SFMTRJxxOW
Orange	FAMTRJKO	-
Telco Ivory	FAMTRJKTI	-
White	FAMTRJKW	SFMTRJxxW
Yellow	FAMTRJKY	-

xx = Adapter Color: **AQ** (Aqua), **BE** (Beige), **BK** (Black), **B** (Blue), **GN** (Green), **OR** (Orange), **R** (Red), and **Y** (Yellow).

SC/APC Simplex Keystone Adapters

Zirconia Ceramic
SFSCAAL
SFSCABK
SFSCAG
SFSCAEI
SFSCALA
SFSCAOW
-
-
SFSCAW
-

Note: Adapter is green

MPO Flush Mount Keystone Adapter

Catalog No.
SFFMTPxxAL
SFFMTPxxBK
SFFMTPxxG
SFFMTPxxEI
SFFMTPxxLA
SFFMTPxxOW
-
-
SFFMTPxxW
-

xx = Adapter Color: **AQ** (Aqua), **BE** (Beige), **BK** (Black), and **GN** (Green) only.



LC Duplex, Snap Mount
FALCDMC6B



LC Duplex, Screw Mount
FALCDMS6AQ



SC Duplex, Snap Mount
FASCDMC6GN



SC Duplex, Screw Mount
FASCDMS6B



SC Simplex, Snap Mount
FASCSMC12B

LC Adapters

LC Duplex; recommended cut out: 0.525" X 0.390"

Color	Snap mount, clip installed (6-pack)		Screw mount, clip installed, mounting screws included (6-pack)	
	Phosphor Bronze Sleeve	Zirconia Ceramic Sleeve	Phosphor Bronze Sleeve	Zirconia Ceramic Sleeve
Aqua	FALCDMC6AQ	FALCDSC6AQ	FALCDMS6AQ	FALCDSS6AQ
Beige	FALCDMC6BE	FALCDSC6BE	FALCDMS6BE	FALCDSS6BE
Black	FALCDMC6BK	FALCDSC6BK	FALCDMS6BK	FALCDSS6BK
Blue	FALCDMC6B	FALCDSC6B	FALCDMS6B	FALCDSS6B
Green	FALCDMC6GN	FALCDSC6GN	FALCDMS6GN	FALCDSS6GN
Orange	FALCDMC6OR	FALCDSC6OR	FALCDMS6OR	FALCDSS6OR
Red	FALCDMC6R	FALCDSC6R	FALCDMS6R	FALCDSS6R
Yellow	FALCDMC6Y	FALCDSC6Y	FALCDMS6Y	FALCDSS6Y

LC Quad; recommended cut out: 1.024" X 0.375"

Aqua	FALCQMC6AQ	FALCQSC6AQ	FALCQMS6AQ	FALCQSS6AQ
Beige	FALCQMC6BE	FALCQSC6BE	FALCQMS6BE	FALCQSS6BE
Black	FALCQMC6BK	FALCQSC6BK	FALCQMS6BK	FALCQSS6BK
Blue	FALCQMC6B	FALCQSC6B	FALCQMS6B	FALCQSS6B
Green	FALCQMC6GN	FALCQSC6GN	FALCQMS6GN	FALCQSS6GN
Orange	FALCQMC6OR	FALCQSC6OR	FALCQMS6OR	FALCQSS6OR
Red	FALCQMC6R	FALCQSC6R	FALCQMS6R	FALCQSS6R
Yellow	FALCQMC6Y	FALCQSC6Y	FALCQMS6Y	FALCQSS6Y

Note: Any green zirconia LC or SC adapter is suitable for APC applications.

SC Adapters

SC Duplex; recommended cut out: 1.024" X 0.375"

Color	Snap mount, clip installed (6-pack)		Screw mount, clip installed, mounting screws included (6-pack)	
	Phosphor Bronze Sleeve	Zirconia Ceramic Sleeve	Phosphor Bronze Sleeve	Zirconia Ceramic Sleeve
Aqua	FASCDMC6AQ	FASCDSC6AQ	FASCDMS6AQ	FASCDSS6AQ
Beige	FASCDMC6BE	FASCDSC6BE	FASCDMS6BE	FASCDSS6BE
Black	FASCDMC6BK	FASCDSC6BK	FASCDMS6BK	FASCDSS6BK
Blue	FASCDMC6B	FASCDSC6B	FASCDMS6B	FASCDSS6B
Green	FASCDMC6GN	FASCDSC6GN	FASCDMS6GN	FASCDSS6GN
Orange	FASCDMC6OR	FASCDSC6OR	FASCDMS6OR	FASCDSS6OR
Red	FASCDMC6R	FASCDSC6R	FASCDMS6R	FASCDSS6R
Yellow	FASCDMC6Y	FASCDSC6Y	FASCDMS6Y	FASCDSS6Y

SC Simplex; recommended cut out: 0.525" X 0.390"

Aqua	FASCSMC12AQ	FASCSSC12AQ	FASCSM12AQ	FASCSS12AQ
Beige	FASCSMC12BE	FASCSSC12BE	FASCSM12BE	FASCSS12BE
Black	FASCSMC12BK	FASCSSC12BK	FASCSM12BK	FASCSS12BK
Blue	FASCSMC12B	FASCSSC12B	FASCSM12B	FASCSS12B
Green	FASCSMC12GN	FASCSSC12GN	FASCSM12GN	FASCSS12GN
Orange	FASCSMC12OR	FASCSSC12OR	FASCSM12OR	FASCSS12OR
Red	FASCSMC12R	FASCSSC12R	FASCSM12R	FASCSS12R
Yellow	FASCSMC12Y	FASCSSC12Y	FASCSM12Y	FASCSS12Y

Note: Any green zirconia LC or SC adapter is suitable for APC applications.



ST Duplex,
Snap Mount
FASTDMPB6



ST to SC Duplex,
Snap Mount
FASTSCMPB6



ST Simplex,
Bulkhead
FASTMPB12



MT-RJ
Snap Mount
FAMTRJMPB6



FC Simplex,
Bulkhead
FAFCS56



MPO Duplex,
Screw Mount
FAMTPDSBK

ST-Style Duplex Adapters

Description	Recommended Cut-Out	Color	Phosphor Bronze Sleeve	Zirconia Ceramic Sleeve
Snap mount, clip installed, ST duplex*, 6-pack	Any SC duplex 1.024" x 0.375"	Beige	FASTDMS6	-
		Black	FASTDMS6BK	-
		Blue	FASTDMPB6	-
Screw mount, clip installed, ST duplex, 6-pack	1.024" x 0.375"	Blue	-	FASTDSS6
Bulkhead, ST simplex, 12-pack, with nuts and washers	Dia. 0.38", flat 0.31" (Double D)	Black Oxide, Metal	FASTMPB12	FASTSS12

*These adapters can mount into unloaded FSP adapter panels (see page G11).

SC to ST-Style Duplex Adapters

Description	Recommended SC Duplex Cut-Out	Color	Phosphor Bronze Sleeve	Zirconia Ceramic Sleeve
Snap mount, clip installed, 6-pack	1.024" x 0.375"	Aqua	FASTSCDMC6AQ	-
		Beige	FASTSCDMC6	-
		Black	FASTSCDMC6BK	-
		Blue	FASTSCMPB6	FASTSCDSC6
		Orange	FASTSCDMC6OR	FASTSCDSC6OR
		Red	FASTSCDMC6R	FASTSCDSC6R
		Yellow	FASTSCDMC6Y	FASTSCDSC6Y
Screw mount, clip installed, 6-pack	1.024" x 0.375"	Blue	FASTSCMPB6	-

MPO Simplex Adapters

Description	Recommended MPO Simplex Cut-Out	Color	Snap Mount	Screw Mount
Fits any MPO simplex cut-out, 6-pack Compatible with 12- or 24-fiber MPO connectors	0.590" x 0.394"	Aqua	FAMTPAQ	FAMTPSAQ
		Beige	FAMTPBE	FAMTPSBE
		Black	FAMTPBK	FAMTPSBK
		Green	FAMTPGN	FAMTPSGN
		Gray*	FAMTPRPGY*	FAMTPSRPGY*
		Violet	FAMTPVI	FAMTPSVI

*Reversed polarity

Note: Standard MPO polarity is key-up/key-down. Reversed polarity is key-up/key-up.

MPO Duplex Adapters

Description	Recommended SC Duplex Cut-Out	Color	Snap Mount	Screw Mount
Fits any SC duplex cut-out, 6-pack	1.024" x 0.375"	Aqua	FAMTPDAQ	FAMTPDSAQ
		Beige	FAMTPDBE	FAMTPDSBE
		Black	FAMTPDBK	FAMTPDSBK
		Green	FAMTPDGN	FAMTPDSGN
		Violet	FAMTPDVI	FAMTPDSVI

FC Adapters

Description	Recommended Cut-Out	Finish	Zirconia Ceramic Sleeve
Bulkhead, singlemode, 6-pack	Dia. 0.38", flat 0.31" (Double D)	Nickel Plated	FAFCS56

MT-RJ Adapters

Description	Recommended Cut-Out	Color	Snap Mount
Snap mount, clip installed, 6-pack	0.525" x 0.390" (SC simplex)	Aqua	FAMTRJC6AQ
		Beige	FAMTRJMPB6
		Black	FAMTRJC6BK



SC Duplex, 12-Port, OM3
OCSC50G



ST Duplex, 12-Port, OM2
OCST50



LC Duplex, 12-Port, OS2
OCLCSM



LC Quad, 24-Port, OM3
OCLCQ50G



MT-RJ, 12-Port, OM2
OCRJ50

MPO 12- and 24-Fiber Cassettes

Type A polarity

Fiber Type	Color	SC Duplex	ST-Style	LC Duplex 12F	LC Duplex 24F*	LC Quad 24F*	MT-RJ
50μm, OM2	Black	OCSC50	OCST50	OCLC50	OCLCD50	OCLCQ50	OCRJ50
50μm, OM3	Aqua	OCSC50G	-	OCLC50G	OCLCD50G	OCLCQ50G	OCRJ50G
50μm, OM4	Aqua	OCSC50G4	-	OCLC50G4	OCLCD50G4	OCLCQ50G4	-
62.5μm, OM1	Beige	OCSC62	OCST62	OCLC62	OCLCD62	OCLCQ62	OCRJ62
SM, OS2	Blue	OCSCSM	OCSTSM	OCLCSM	OCLCDSM	OCLCQSM	-

*24 fibers, 2-12 fiber MPO receptacles in rear.

Note: See G16 for Keyed LC fiber cassettes. See page J3 for ultra compact high density cassettes used in the FCRHD1UBK enclosure.



MPO, 12-Fiber, OM3
FPCPMTP50G3M3FN



MPO, 12-Fiber, OM4
FPCPMTP50G4V3FN



MPO, 12-Fiber, OS2
FPCPMTPS3FN

MPO to MPO 12-Fiber Cords

OFNP rated plenum, Type A polarity

Fiber Type	Cable Color	Connector Color	With Pulling Eye		No Pulling Eye
			Non-Armored	Armored	Non-Armored
50μm, OM3	Aqua	Aqua	FPCPMTP50G3Myf	FPCPMTP50G3MyfA	FPCPMTP50G3MyfN
50μm, OM4	Aqua	Aqua	FPCPMTP50G4Myf	FPCPMTP50G4MyfA	FPCPMTP50G4MyfN
50μm, OM4	Violet	Black	FPCPMTP50G4Vyf	FPCPMTP50G4VyfA	FPCPMTP50G4VyfN
50μm, OM2	Orange	Orange	FPCPMTP50Myf	FPCPMTP50MyfA	FPCPMTP50MyfN
62.5μm, OM1	Orange	Orange	FPCPMTP62Myf	FPCPMTP62MyfA	FPCPMTP62MyfN
SM, OS2	Yellow	Green	FPCPMTPSyf	FPCPMTPSyfA	FPCPMTPSyfN

y = Length can be in feet or meters; enter numerical value.

f = Enter **F** if length is feet; leave blank if meters.

Note: Pulling eye supplied on all armored assemblies.

Any length in meters or feet quoted and made to order. See page H6 for custom configured MPO trunks.

EXAMPLE 1: **FPCPMTP50G3M75FN** (12-fiber MPO, plenum, OM3, 75ft length, non-armored, no pulling eye)

EXAMPLE 2: **FPCPMTP50G4M100FA** (12-fiber MPO, plenum, OM4, 100ft length, armored, with pulling eye)



LC Duplex, 6-Port
FSPLCDM3AQ



LC Duplex, 24-Port
FSPLCDM12AQ



LC Quad, 24-Port
FSPLCQS6Y



SC Duplex, 6-Port
FSPSCDM3B



SC Duplex, 12-Port
FSPSCDS6Y



ST/SC Duplex, 6-Port
FSPSCST3



ST/SC Duplex, 12-Port
FSPSCST6

LC Duplex FSP Adapter Panels

	LC 6-Port (3 LC Duplex)		LC 12-Port (6 LC Duplex)		LC 24-Port (12 LC Duplex)	
Color	Phosphor Bronze Multimode Only	Zirconia Ceramic Single/Multimode	Phosphor Bronze Multimode Only	Zirconia Ceramic Single/Multimode	Phosphor Bronze Multimode Only	Zirconia Ceramic Single/Multimode
Aqua	FSPLCDM3AQ	FSPLCDS3AQ	FSPLCDM6AQ	FSPLCDS6AQ	FSPLCDM12AQ	FSPLCDS12AQ
Beige	FSPLCDM3BE	FSPLCDS3BE	FSPLCDM6BE	FSPLCDS6BE	FSPLCDM12BE	FSPLCDS12BE
Black	FSPLCDM3BK	FSPLCDS3BK	FSPLCDM6BK	FSPLCDS6BK	FSPLCDM12BK	FSPLCDS12BK
Blue	FSPLCDM3B	FSPLCDS3B	FSPLCDM6B	FSPLCDS6B	FSPLCDM12B	FSPLCDS12B
Green	FSPLCDM3GN	FSPLCDS3GN	FSPLCDM6GN	FSPLCDS6GN	FSPLCDM12GN	FSPLCDS12GN
Orange	FSPLCDM3OR	FSPLCDS3OR	FSPLCDM6OR	FSPLCDS6OR	FSPLCDM12OR	FSPLCDS12OR
Red	FSPLCDM3R	FSPLCDS3R	FSPLCDM6R	FSPLCDS6R	FSPLCDM12R	FSPLCDS12R
Yellow	FSPLCDM3Y	FSPLCDS3Y	FSPLCDM6Y	FSPLCDS6Y	FSPLCDM12Y	FSPLCDS12Y

LC Quad FSP Adapter Panels

	LC 12-Port (3 LC Quad)		LC 16-Port (4 LC Quad)		LC 24-Port (6 LC Quad)	
Color	Phosphor Bronze Multimode Only	Zirconia Ceramic Single/Multimode	Phosphor Bronze Multimode Only	Zirconia Ceramic Single/Multimode	Phosphor Bronze Multimode Only	Zirconia Ceramic Single/Multimode
Aqua	FSPLCQM3AQ	FSPLCQS3AQ	FSPLCQM4AQ	FSPLCQS4AQ	FSPLCQM6AQ	FSPLCQS6AQ
Beige	FSPLCQM3BE	FSPLCQS3BE	FSPLCQM4BE	FSPLCQS4BE	FSPLCQM6BE	FSPLCQS6BE
Black	FSPLCQM3BK	FSPLCQS3BK	FSPLCQM4BK	FSPLCQS4BK	FSPLCQM6BK	FSPLCQS6BK
Blue	FSPLCQM3B	FSPLCQS3B	FSPLCQM4B	FSPLCQS4B	FSPLCQM6B	FSPLCQS6B
Green	FSPLCQM3GN	FSPLCQS3GN	FSPLCQM4GN	FSPLCQS4GN	FSPLCQM6GN	FSPLCQS6GN
Orange	FSPLCQM3OR	FSPLCQS3OR	FSPLCQM4OR	FSPLCQS4OR	FSPLCQM6OR	FSPLCQS6OR
Red	FSPLCQM3R	FSPLCQS3R	FSPLCQM4R	FSPLCQS4R	FSPLCQM6R	FSPLCQS6R
Yellow	FSPLCQM3Y	FSPLCQS3Y	FSPLCQM4Y	FSPLCQS4Y	FSPLCQM6Y	FSPLCQS6Y

SC Duplex FSP Adapter Panels

	SC 6-Port (3 SC Duplex)		SC 8-Port (4 SC Duplex)		SC 12-Port (6 SC Duplex)	
Color	Phosphor Bronze Multimode Only	Zirconia Ceramic Single/Multimode	Phosphor Bronze Multimode Only	Zirconia Ceramic Single/Multimode	Phosphor Bronze Multimode Only	Zirconia Ceramic Single/Multimode
Aqua	FSPSCDM3AQ	FSPSCDS3AQ	FSPSCDM4AQ	FSPSCDS4AQ	FSPSCDM6AQ	FSPSCDS6AQ
Beige	FSPSCDM3BE	FSPSCDS3BE	FSPSCDM4BE	FSPSCDS4BE	FSPSCDM6BE	FSPSCDS6BE
Black	FSPSCDM3BK	FSPSCDS3BK	FSPSCDM4BK	FSPSCDS4BK	FSPSCDM6BK	FSPSCDS6BK
Blue	FSPSCDM3B	FSPSCDS3B	FSPSCDM4B	FSPSCDS4B	FSPSCDM6B	FSPSCDS6B
Green	FSPSCDM3GN	FSPSCDS3GN	FSPSCDM4GN	FSPSCDS4GN	FSPSCDM6GN	FSPSCDS6GN
Orange	FSPSCDM3OR	FSPSCDS3OR	FSPSCDM4OR	FSPSCDS4OR	FSPSCDM6OR	FSPSCDS6OR
Red	FSPSCDM3R	FSPSCDS3R	FSPSCDM4R	FSPSCDS4R	FSPSCDM6R	FSPSCDS6R
Yellow	FSPSCDM3Y	FSPSCDS3Y	FSPSCDM4Y	FSPSCDS4Y	FSPSCDM6Y	FSPSCDS6Y

SC to ST-Style Duplex FSP Panels

Description	Phosphor Bronze Sleeve	Zirconia Ceramic Sleeve
SC-ST 6-port, blue	FSPSCST3	FSPSCSTDS3
SC-ST 12-port, blue	FSPSCST6	FSPSCSTDS6

ST-Style Duplex FSP Adapter Panels

Description	Phosphor Bronze Sleeve	Zirconia Ceramic Sleeve
ST duplex, 6-port, blue	FSPSTD3	FSPSTD3S
ST duplex, 12-port, blue	FSPSTD6	FSPSTD6S



FC Duplex, 6-Port
FSPFC6



SC Simplex, 6-Port
FSPSC6



SC/APC Simplex, 6-Port
FSPSCA6



ST Simplex, 6-Port
FSPST6



MPO Simplex, 6-Port
FSPMTPAQ6



Jack-Pack®, 4-Port
FSPHD4X

FIBER | CONNECTIVITY

FC Simplex

Nickle Plate

Description	Zirconia Ceramic Sleeve
FC 6-port (6 FC)	FSPFC6
FC 8-port (8 FC)	FSPFCSS8

SC Simplex

Blue

Description	Phosphor Bronze Sleeve	Zirconia Ceramic Sleeve
SC 6-port (6 SC)	FSPSC6	FSPSCSS6
SC 8-port (8 SC)	FSPSC8	FSPSCSS8
SC 12-port (12 SC)	FSPSC12	FSPSCSS12

SC Simplex, APC

Green

Description	Zirconia Ceramic Sleeve
SC 6-port (6 SC)	FSPSCA6
SC 8-port (8 SC)	FSPSCA8

ST-Style Simplex

Yellow

Description	Phosphor Bronze Sleeve	Zirconia Ceramic Sleeve
ST-style 6-port	FSPST6	FSPSTSS6
ST-style 8-port	FSPST8	FSPSTSS8

MT-RJ

Black

Description	Catalog No.
MT-RJ 6-port	FSPMTRJ6
MT-RJ 8-port	FSPMTRJ8

JACK-PACK®, Unloaded

Description	Catalog No.
Keystone 4-port	FSPHD4X
Keystone 6-port	FSPHD6X*

**Will not fit into FTU2 series, FTU4SP or FCR2U9SP enclosures.*

MPO, Standard Polarity*

Color	Application	Simplex 6-Port (72 Fiber)	Duplex 8-Port (96 Fiber)	Duplex 12-Port (144 Fiber)
Aqua	OM3/OM4	FSPMTPAQ6	FSPMTPDAQ4	FSPMTPDAQ6
Beige	OM1/OM2	FSPMTPBE6	FSPMTPDBE4	FSPMTPDBE6
Black	Universal	FSPMTPBK6	FSPMTPDBK4	FSPMTPDBK6
Green	Singlemode	FSPMTPGN6	FSPMTPDGN4	FSPMTPDGN6
Violet	OM4	FSPMTPVI6	FSPMTPDVI4	FSPMTPDVI6

*Standard MPO polarity is key-up/key-down. Reversed polarity is key-up/key-up.
Note: Compatible with 12- or 24-fiber MPO connectors.

MPO, Reversed Polarity*

Color	Simplex 6-Port (72 Fiber)
Gray	FSPMTPRPGY6



Blank Panel
FSPB



SC Simplex, 6-Port
FSPSC6X



SC Simplex, 6-Port
FSPSC8X



SC Duplex, 6-Port
FSPSCD3X

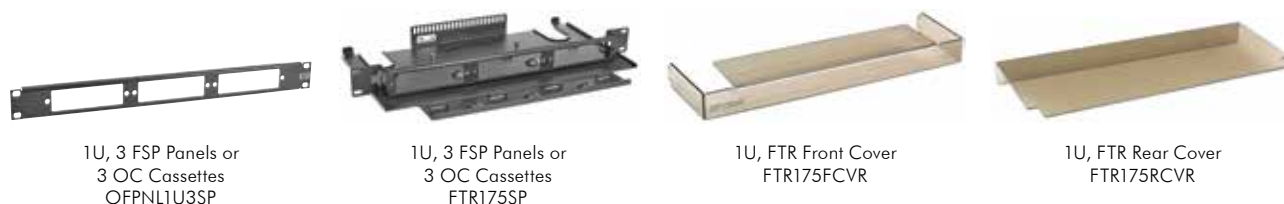


SC Duplex, 12-Port
FSPSCD6X

FSP Adapter Panels, Unloaded

Description	Catalog No.	Description	Catalog No.
Blank, snap-in	FSPB	4 SC duplex or LC quad	FSPSCD4X
6 SC simplex or LC duplex	FSPSC6X	6 SC duplex or LC quad	FSPSCD6X
8 SC simplex or LC duplex	FSPSC8X	6 ST-style	FSPST6X
12 SC simplex or LC duplex	FSPSC12X	8 ST-style	FSPST8X
3 SC duplex or LC quad	FSPSCD3X	6 MTP-style	FSPSC6X

Note: Use Hubbell snap mount or screw mount adapters (screws included).



FTR Series Open Cabling Interconnect Trays, 19" Rack Mount

Rack Units	Height Inches (mm)	Width Inches (mm)	Depth Inches (mm)	FSP Panel Capacity	Splice Tray Capacity	Max LC Port Capacity	Catalog No.
1	1.75" (44)	17" (432)	12" (305)	3	2	72	FTR175SP

Note: Compatible with FSP Series panels and OC Series cassettes

LEXAN® Covers for FTR Series Interconnect Trays

For FTR175SP, smoke tint

Description	Catalog No.
Front cover	FTR175FCVR
Rear cover	FTR175RCVR

OFPNL Series Open Cabling Interconnect Panels, 19" Rack Mount

Rack Units	Height Inches (mm)	Width Inches (mm)	FSP Panel Capacity	Max LC Port Capacity	Catalog No.
1	1.75" (44)	17" (432)	3	72	OFPNL1U3SP
1	1.75" (44)	17" (432)	2	48	OFPNL1U2SP

Note: Compatible with FSP Series panels and OC Series cassettes

Accessories

Description	Catalog No.
Cable management bar, 19" rack mount	CMBR
Cable management bar, 19", 3" offset	ECMBR3
Cable management bar, 19", 6" offset	ECMBR6
Cable management bar, 19", straight	ECMBRS
Blank FSP panel	FSPB

LEXAN is a registered trademark of General Electric Company.



Precision Cleaver
OFCLV5



Buffer Strip Tool
OFSTRIP



Fiber Test Set
OFPM813, OFLS813



Fiber Microscope
OFSCOPE1



Epoxy Termination Kit
OFTK03C

Fiber Cleavers

Description	Catalog No.
Multimode fiber only	OFCLV3
SM or MM fiber, CT-30 style, with case	OFCLV4
SM or MM fiber, precision, with case	OFCLV5

Visual Fault Locators (ST, SC, LC)

Includes: batteries, LC adapter, holster, wrist strap and end protectors

Description	Catalog No.
Visual fault locator	OFVFLKT1
LC adapter, separate	OFVLCADP

TIP: Use a VFL during termination for optimum test results.

Microscope, 400X

Includes: built-in illuminator, batteries, SC/ST-style adapter, and soft pouch

Description	Catalog No.
SC/ST-style microscope	OFSCOPE1
LC adapter (400X microscope only)	FOADPTLC

Fiber Strip Tools

Description	Catalog No.
900 micron buffered fiber	OFSTRIP
Universal 250/900μ, 2.0, 2.5, 3.0mm cable	OFSTRIP2

Multimode Test Set

Includes: (1) power meter, (1) dual wavelength LED source, (1) soft pouch, batteries

Description	Catalog No.
Complete tester kit	OFPLK813A
Power meter dual wavelength	OFPM813
LED light source dual wavelength, multimode	OFLS813

Microscope, 200X (ST, SC, LC)

Includes: batteries, LC adapter, and soft pouch

Description	Catalog No.
ST, SC, LC microscope	OFSCOPE2

Field Installation Tool Kit, Epoxy and Crimp Style

Includes:

- OFSTRIP2 fiber strip tool
- OFCMT04 crimp tool
- Universal 2.5mm and 1.25mm polishing pucks
- Polishing plate
- 70 durometer polishing pad
- Polishing paper
- 200X microscope with 2.5mm and 1.25mm universal adapters
- Carbon fiber scissors
- Reversible blade carbide scribe
- Permanent marker
- Protective glasses
- Debris bottle for fiber safety
- Alcohol wipes
- Lint free cleaning wipes
- Water bottle
- Alcohol bottle
- 6" ruler
- 10" long x 7" wide x 6.25" high carrying case with the lid functioning as a portable work surface

Description	Catalog No.
Field installation tool kit for SC/ST and LC connectors	OFTK05

Kevlar® Cable Scissors

Description	Catalog No.
For cutting Kevlar reinforced cables up to 24-strand, non-armored	OFSCSRS

Connector Installation Tool Pouch

Includes: sapphire scribe, scribe guide, black permanent marker, carbon fiber scissors, strip template and polishing fixture, ruler, buffer/cable jacket stripper, 200X microscope assembly, crimp tool and die

Description	Catalog No.
For SC/ST-style connectors crimp or adhesive termination	OFTP02C

Termination Kits, Epoxy

Includes: canned air, 10oz, tool pouch (OFTP02C) with fiber and cable preparation tools, wipes, heat cure epoxy, anaerobic adhesive and primer, polishing paper, polishing pad, heat-cure epoxy oven, safety glasses, syringes, needles, cure adapters and clips

For SC/ST-style connectors	Catalog No.
16-Port (110V AC)	OFTK03C
8-Port (220V AC)	OFTK04C*

*Does not contain canned air.



Epoxy/Crimp Termination Kit
OFTK05

Note: See PROclick® connectors on page G3 for termination tool applications. Kevlar is a registered trademark of E. I. du Pont de Nemours and Company.



Anaerobic Adhesive Kit
OFCAP



Loose Tube Break-Out Kit
OFBOKT6



Crimp Tool
OFCMT04



Fiber Scribe
OFSCRIBE



Cable Management Clip
FBRMGTCPLK4

Epoxy Adhesive Kit

Includes: (6) tubes 1g, (6) syringes/needles

Description	Catalog No.
Easy mix 1g tubes	OFCEP

Anaerobic Adhesive Kit

Includes: Primer and adhesive, (10) syringes and (10) needles

Description	Catalog No.
Anaerobic adhesive kit cures in 6–10 seconds	OFCAP
Replacement bottle of primer only	OFPRIME

Epoxy Cure Adapters

Includes: package of (6) adapters for heat cure oven

Description	Catalog No.
SC/ST-style	OFCA
LC	OFCALC

Loose Tube OSP Cable Break-Out Kits

Includes: tube kit, break-out block and crimp bushing

Description	Catalog No.
6-fiber break-out kit	OFBOKT6
12-fiber break-out kit	OFBOKT12

Fiber Cable Management Radius Clips

Includes: pack of (4) self-adhering clips with bend radius control element

Description	Catalog No.
Cable clips	FBRMGTCPLK4

LC Duplex Connector Extraction Tool

Includes: (1) tool, individually packaged, ideal for servicing high density interconnections

Description	Catalog No.
Connector extraction tool	OFLCDTOOL1

Crimp Tool

Dual hex cavity: 0.178"/0.151", flat crimp 0.052", hex crimp 0.136", hardened die

Description	Catalog No.
For SC/ST-style epoxy/anaerobic or crimp style connectors	OFCMT04

Hand Scribe Tool

Includes: (1) tool and scribe guide

Description	Catalog No.
Sapphire blade	OFSCRIBE

Scribe Guide Fixture

6-pack

Description	Catalog No.
Suitable for SC, ST-style, or LC connectors	OFSG

Polishing Fixture

Includes: (1) stainless steel puck, polished surface; SC/ST-style or LC compatible

Description	Catalog No.
SC/ST-style	OFPUCK
LC	OFPUCKLC

Polishing Film

Includes: (25) each of 5 μ , 1 μ and 0.3 μ sheets, (1) polishing pad

Description	Catalog No.
Replacement kit	OFLFP

OPTISOK® Pulling Grips

Bundle Size Range

Range	Catalog No.
0.125–0.562"	CCPS1
0.250–0.750"	CCPS2
0.750–1.750"	CCPS3

Fusion Splice Sleeves

25-pack

Description	Catalog No.
40mm length, 10mm cleave	FSHST401025
12-fiber ribbon	FRSHST401025

Fiber Management Spool

2-pack

Description	Catalog No.
Adhesive mount, yellow	OFSPPOOLPK2

Fusion Splice Trays

Description

Description	Catalog No.
Aluminum, 12-fiber	STRAY12F
Aluminum, 24-fiber	STRAY24F
Plastic, yellow, 24-fiber	OFSPPLKT24F



Keyed LC, OS2
FCKLCP50GM12BL

Keyed LC to SC, OM3
KLCDFPSC50GM01YL

Keyed LC, OM3
KLCDFPYLLC50GM01YL

Keyed LC, Flush Snap Fitting
SFFKLCBLW

Keyed LC Adapter
FAKLCDSC6GN

Secure-IT Keyed LC Pre-Polished Connectors

Housing Color	50µM, OM3 Aqua Boot	50µM, OM2 Black Boot	62.5µM, OM1 Beige Boot	SM, OS2 Blue Boot
Blue	FCKLCP50GM12BL	FCKLCP50M12BL	FCKLCP62M12BL	FCKLCP50M12BL
Green	FCKLCP50GM12GN	FCKLCP50M12GN	FCKLCP62M12GN	FCKLCP50M12GN
Red	FCKLCP50GM12RD	FCKLCP50M12RD	FCKLCP62M12RD	FCKLCP50M12RD
Yellow	FCKLCP50GM12YL	FCKLCP50M12YL	FCKLCP62M12YL	FCKLCP50M12YL

Note: Box of 12 individually bagged connectors with dust caps installed and termination instructions.
Special Housing Colors also available: **AQ** (Aqua), **BR** (Brown), **OR** (Orange), **RO** (Rose), **SL** (Slate) and **VI** (Violet).

Tip: PROclick® LC connectors may be used behind the wall with any hybrid snap fitting. See Keyed LC to LC Hybrid Snap Fittings below.

LC Duplex Clip

Black	FCKLCDCLP12BK
-------	----------------------

Keyed LC 10GbE Multimode OM3 Patch Cords

50µm, OM3, aqua cable jacket

Housing Color	Keyed LC to Keyed LC	Keyed LC to Standard LC	Keyed LC to Standard SC
Blue	KLCDFP50GMyyBL	KLCDFP50GMyyBL	KLCDFP50GMyyBL
Green	KLCDFP50GMyyGN	KLCDFP50GMyyGN	KLCDFP50GMyyGN
Red	KLCDFP50GMyyRD	KLCDFP50GMyyRD	KLCDFP50GMyyRD
Yellow	KLCDFP50GMyyYL	KLCDFP50GMyyYL	KLCDFP50GMyyYL

Note: Individually bagged with dust caps installed and factory test data.

yy = Standard Length: **01**, **02**, **03**, **05** and **10** meters.

Special Housing Colors also available: **AQ** (Aqua), **BR** (Brown), **OR** (Orange), **RO** (Rose), **SL** (Slate) and **VI** (Violet).

Keyed LC OM3 Patch Cords for High Security Networks

50µm, OM3, yellow cable jacket

Keyed LC to Standard LC	Keyed LC to Standard SC
KLCDFPYLLC50GMyyYL	KLCDFPYLLC50GMyyYL

Note: Individually bagged with dust caps installed and factory test data.

yy = Standard Length: **01**, **02**, **03**, **05**, **10** and **15** meters.

Keyed LC to LC Hybrid Snap Fittings

Housing Color	Flush Snap Fitting, Keyed LC to Standard LC
Ivory	SFFKLCxxEI
Office White	SFFKLCxxOW
White	SFFKLCxxW

xx = Standard Adapter Color: **RD** (Red) and **YL** (Yellow).

Note: Individually bagged with dust caps installed.

Standard LC end is black on all hybrid adapters.

Keyed LC Snap Fittings

Housing Color	Flush Snap Fitting, Keyed LC	Snap Fitting, Keyed LC
Almond	SFFKLCxxAL	SFKLCxxAL
Black	SFFKLCxxBK	SFKLCxxBK
Gray	SFFKLCxxGY	SFKLCxxGY
Ivory	SFFKLCxxEI	SFKLCxxEI
Office White	SFFKLCxxOW	SFKLCxxOW
White	SFFKLCxxW	SFKLCxxW

Note: Individually bagged with dust caps installed.

xx = Standard Adapter Color: **BL** (Blue), **GN** (Green), **RD** (Red) and **YL** (Yellow).

Special Adapter Colors also available: **AQ** (Aqua), **BR** (Brown), **OR** (Orange),

RO (Rose), **SL** (Slate) and **VI** (Violet).

Keyed LC Adapters

Adapter Color	Flush Snap Fitting, Keyed LC
Blue	FAKLCDSC6BL
Green	FAKLCDSC6GN
Red	FAKLCDSC6RD
Yellow	FAKLCDSC6YL

Note: Individually bagged with dust caps installed.

Special Adapter Colors also available: **AQ** (Aqua),

BR (Brown), **OR** (Orange), **RO** (Rose), **SL** (Slate) and

VI (Violet).

Contact Hubbell Premise Wiring for other configurations and special lengths custom quoted and made to order. Keyed LC trunk assemblies also custom made to order.



Keyed LC Duplex, 12-Port
FSPKLCDS6GN



Keyed LC Duplex, 12-Port
FSPKLCDS6RD



Keyed LC to MPO, 12-Port
OCKLCD50GS12YL



Keyed LC to MPO, 12-Port
OCKLC50GS12BL

Keyed LC Adapter Panels

LC duplex, ceramic

Housing Color	12-Port	24-Port
Blue	FSPKLCDS6BL	FSPKLCDS12BL
Green	FSPKLCDS6GN	FSPKLCDS12GN
Red	FSPKLCDS6RD	FSPKLCDS12RD
Yellow	FSPKLCDS6YL	FSPKLCDS12YL

Note: Individually bagged with dust caps installed.
Special Housing Colors also available: **AQ** (Aqua), **BR** (Brown), **OR** (Orange), **RO** (Rose), **SL** (Slate) and **VI** (Violet).

Keyed LC to MTP Cassette Panels

Housing Color	62.5 μm, OM1		50 μm, OM2	
	12-Port	24-Port	12-Port	24-Port
Blue	OCKLCD62S12BL	OCKLCD62S24BL	OCKLCD50S12BL	OCKLCD50S24BL
Green	OCKLCD62S12GN	OCKLCD62S24GN	OCKLCD50S12GN	OCKLCD50S24GN
Red	OCKLCD62S12RD	OCKLCD62S24RD	OCKLCD50S12RD	OCKLCD50S24RD
Yellow	OCKLCD62S12YL	OCKLCD62S24YL	OCKLCD50S12YL	OCKLCD50S24YL

Housing Color	50 μm, OM3		SM, OS2	
	12-Port	24-Port	12-Port	24-Port
Blue	OCKLCD50GS12BL	OCKLCD50GS24BL	OCKLCDSS12BL	OCKLCDSS24BL
Green	OCKLCD50GS12GN	OCKLCD50GS24GN	OCKLCDSS12GN	OCKLCDSS24GN
Red	OCKLCD50GS12RD	OCKLCD50GS24RD	OCKLCDSS12RD	OCKLCDSS24RD
Yellow	OCKLCD50GS12YL	OCKLCD50GS24YL	OCKLCDSS12YL	OCKLCDSS24YL

Note: Individually bagged and boxed with dust caps installed and factory test data.
Accessories shown on page H3. Contact Hubbell Premise Wiring for the full line of keyed LC patch cords and custom MTP cords made to order.
Special Housing Colors also available: **AQ** (Aqua), **BR** (Brown), **OR** (Orange), **RO** (Rose), **SL** (Slate) and **VI** (Violet).

Accessories

Description	Catalog No.
Keyed LC crimp tool, with dies	OFCMTKLC1
Fiber strip tool, 250/900/2.0/3.0mm	OFSTRIP2
Cleave tool, keyed LC connectors	OFCLVKLC1
LC duplex clip, black	FCKLCDCLP12BK
Fiber microscope, 200X	OFSCOPE2
Laser visual fault locator	OFVFLKT1

Keyed LC Termination Tool Kit

Includes: crimp tool with dies, cleave tool and 1/4" wrench, cable holder and clamp, termination training CD-ROM, Kevlar® shears and cable splitter, strip tool (combination), cleaning and inspection guide, soft carrying case

Description	Catalog No.
Keyed LC termination tool kit, complete	OFTKLCPK1

Kevlar is a registered trademark of DuPont/E.I. du Pont de Nemours and Company.