

# FIBER

## ASSEMBLIES

Hubbell's expanded line of pre-terminated fiber assemblies includes the labor-saving BIDnet engineered trunks, cords, hydras, and pigtails. The Hubbell BIDnet program is a custom quote and make-to-order service, featuring premium quality cable and components, assembled locally for quick, reliable delivery. Other new products include a full range of pigtail bundles, ribbon pigtails, high density LC and keyed LC patch cords, and MSFP style equipment cords.





# ASSEMBLIES

PRODUCT	PAGE
FIBER TRUNK ASSEMBLIES . . . . .	J3
FIBER PATCH CORDS . . . . .	J5
FIBER PIGTAILS, SINGLE AND BUNDLED . . . . .	J7
SPECIALTY PATCH CORDS AND PIGTAILS . . . . .	J8





**Performance**

Premium OM3 and OM4 multimode fiber; bend insensitive OS2 singlemode fiber; featuring low loss MTP terminations.



**Custom Made to Order**

Configured to exact customer specifications.



**Quality and Reliability**

Precision factory machine-polished epoxy terminations, 100% tested.



**Labor Savings**

Ideal solution for data centers, requiring no field termination.



- MISSION CRITICAL® 25-Year Warranty\*
- Plug-n-Play Installation for Rapid Deployment
- 100% Factory Tested, Data Included
- RoHS Compliant

*\*Project must be registered in accordance with the Hubbell MISSION CRITICAL® program.*

**Standards/Listings/Verifications**

- TIA-568-C.0, C.1 and C.3
- Telcordia GR-326-CORE
- Telcordia GR-409
- TIA-604-FOCIS
- ANSI/ICEA S-83-596
- IEEE 802.3

**MTP Connector Specifications**

- Gender: female has no alignment pins; male has pins
- MM insertion loss: <0.50 dB (standard loss)
- MM insertion loss: <0.35 dB (low loss)
- SM insertion loss: <0.55 dB (0.35 dB typical)
- SM return loss: >50 dB
- MM return loss: >26 dB
- Standard polarity: TIA-568-C.3, Type "A"

**Single Fiber Connector Specifications**

- MM insertion loss: <0.50 dB (0.35 dB typical)
- SM insertion loss: <0.35 dB (0.15 dB typical)
- SM UPC return loss: >50 dB
- SM APC return loss: >65 dB
- MM return loss: >26 dB
- Ferrule material: zirconia ceramic
- Mating durability: 500 cycles

**MTP Fiber Cords**

**Available Options**

- Connectors: MTP female
- Fiber types: 62/OM1, 50/OM2, 50/OM3, 50/OM4, SM/OS2
- Fiber strand count: 12, 24, 48, 72, 96 and 144 fibers
- Cable: plenum, riser, or LSZH (armored or non-armored)
- Polarity: TIA-568C.3 Type A, B, or C



**MTP Male and Gender Change Cords**

**Available Options**

- Connectors: MTP female or MTP male
- Fiber types: 50/OM3, 50/OM4, SM/OS2
- Fiber strand count: 12, 24, 48, 72, 96 and 144 fibers
- Cable: plenum, riser, or LSZH (armored or non-armored)
- Polarity: TIA-568C.3 Type A, B, or C



**40 Gb/s and 100 Gb/s MTP Fiber Cords**

**Available Options**

- Connectors: MTP female, 12-fiber or 24-fiber
- Fiber types: 50/OM3, 50/OM4
- 40 Gb/s fiber strand count: 12, 24, 48, 72, 96 and 144 fibers
- 100 Gb/s fiber strand count: 24 and 48 fibers
- Cable: plenum, riser, or LSZH
- Polarity: 40GBASE-SR4 or 100GBASESR10
- Lengths: 1 to 150 meters (3 to 500 ft) channel
- Application limits:
  - OM3 40G/100G limit: 100 m (328 ft)
  - OM4 40G/100G limit: 150 m (492 ft)



**Distribution Trunks and Pigtails**

**Available Options**

- Connectors: LC, MSFP, keyed LC, SC, SC/APC, ST, FC, FC/APC
- Fiber types: 62/OM1, 50/OM2, 50/OM3, 50/OM4, SM/OS2
- Fiber strand count: 6, 12, 24, 48, 72, and 96 fibers
- Cable: plenum, riser, or LSZH (armored or non-armored)
- Fan-out options: 900 micron buffer



**Transition Assemblies**

**Available Options**

- Connectors: MTP female to LC or SC duplex
- Fiber types: 50/OM3, 50/OM4, SM/OS2
- Fiber strand count: 12, 24 and 48 fibers
- Cable: plenum, riser, or LSZH (armored or non-armored)
- Polarity: TIA-568C.3, Type A,B or C



**Mesh Bundle Trunks (2.0mm Duplex Zip Cord)**

**Available Options**

- Connectors: LC, MSFP, keyed LC, SC, SC/APC, ST, FC, FC/APC
- Fiber types: 62/OM1, 50/OM2, 50/OM3, 50/OM4, SM</OS2
- Fiber strand count: 6, 12, 24, 48, 72, and 96 fibers
- Cable: plenum, riser, or LSZH
- Outer sheath: polyester mesh



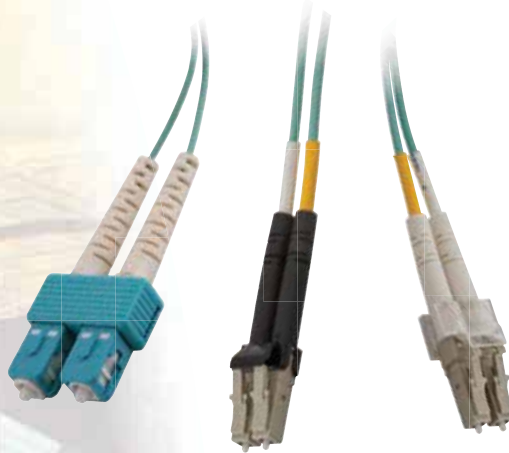
**Distribution Fan-Out Trunks and Pigtails**

**Available Options**

- Connectors: LC, MSFP, keyed LC, SC, SC/APC, ST, FC, FC/APC
- Fiber types: 62/OM1, 50/OM2, 50/OM3, 50/OM4, SM/OS2
- Fiber strand count: 6, 12, 24, 48, 72 and 96 fibers
- Cable: plenum, riser, or LSZH (armored or non-armored)
- Fan-out: 2.0mm furcation tubing



All BIDnet fiber trunk assemblies are custom made-to-order items. Please call our insides sales team for price and lead time. Refer to product data sheets for nomenclature and detailed design information. Application limits apply to available lengths.



**HUBBELL**  
**Advantage**

- Premium Quality Cable and Components, 100% Factory Tested
- Individually Bagged with Dust Caps and Factory Test Data Included, Ready to Install
- Custom Configurations Quoted and Made to Order
- Space-Saving 2.0mm Jacket, RoHS Compliant

**Specifications**

- Mated pair insertion loss:  
MM: <0.50 dB (0.35 dB typical)  
SM: <0.35 dB (0.15 dB typical)
- Return loss: SM >55 dB, MM >26 dB
- Ferrule material: zirconia ceramic
- Mating durability: 500 cycles

**Standards/Listings/Verifications**

- TIA-568-C.3
- TIA-604-FOCIS
- Telcordia GR-326-CORE

SC Duplex to SC Duplex



**SC to SC Patch Cords**

**Duplex/Multimode**

	Cable Color	Catalog No.
SC to SC, 62.5, OM1	OR	<b>DFPCSCSCCyyMM</b>
SC to SC, 50, OM2	OR	<b>DFPCSCSCDyyMM</b>
SC to SC, 50, OM3	AQ	<b>DFPCSCSCEyyMM</b>

**Duplex/Singlemode**

SC to SC, SM, OS2	YL	<b>DFPCSCSCSyySM</b>
-------------------	----	----------------------

Replace yy with standard lengths of **1, 2, 3, 5** or **10** meters.

ST-style to ST-style Duplex



**ST-Style to ST-Style Patch Cords**

**Duplex/Multimode**

	Cable Color	Catalog No.
ST to ST-style, 62.5, OM1	OR	<b>DFPCSTSTCyyMM</b>
ST to ST-style, 50, OM2	OR	<b>DFPCSTSTDyyMM</b>

**Duplex/Singlemode**

ST to ST-style, SM, OS2	YL	<b>DFPCSTSTSyySM</b>
-------------------------	----	----------------------

Replace yy with standard lengths of **1, 2, 3, 5** or **10** meters.

MT-RJ to MT-RJ Duplex MM  
MT-RJ Duplex to ST-style Duplex MM



**MT-RJ Patch Cords**

**Duplex/Multimode**

	Cable Color	Catalog No.
MT-RJ to MT-RJ, 62.5, OM1	BL/OR	<b>DFPCRJRJCyyMM</b>
MT-RJ to ST-style, 62.5, OM1	BL/OR	<b>DFPCRJSTCyyMM</b>
MT-RJ to SC, 62.5, OM1	BL/OR	<b>DFPCRJSCCyyMM</b>

Replace yy with standard lengths of **1, 2, 3** or **5** meters.

SC Duplex to ST-style Duplex



**ST-Style to SC Patch Cords**

**Duplex/Multimode**

	Cable Color	Catalog No.
ST-style to SC, 62.5, OM1	OR	<b>DFPCSTSCCyyMM</b>
ST-style to SC, 50, OM2	OR	<b>DFPCSTSCDyyMM</b>

**Duplex/Singlemode**

ST-style to SC, SM, OS2	YL	<b>DFPCSTSCSyySM</b>
-------------------------	----	----------------------

Replace yy with standard lengths of **1, 2, 3, 5** or **10** meters.

## LC Patch Cords

### Duplex/Multimode

Description	Cable Color	Catalog No.
LC to LC, 62.5, OM1	OR	<b>DFPCLCLCCyyMM</b>
LC to ST-style, 62.5, OM1	OR	<b>DFPCLCSTCyyMM</b>
LC to SC, 62.5, OM1	OR	<b>DFPCLCSCCyyMM</b>
LC to LC, 50, OM2	OR	<b>DFPCLCLCDyyMM</b>
LC to SC, 50, OM2	OR	<b>DFPCLCSCDyyMM</b>
LC to LC, 50, OM3	AQ	<b>DFPCLCLCEyyMM</b>
LC to SC, 50, OM3	AQ	<b>DFPCLCSCEyyMM</b>
LC to LC, 50, OM4	AQ	<b>DFPCLCLCFyyMM</b>
LC to sC, 50, OM4	AQ	<b>DFPCLCSCFyyMM</b>

### Duplex/Singlemode

Description	Cable Color	Catalog No.
LC to LC, singlemode, OS2	YL	<b>DFPCLCLCSyySM</b>
LC to ST-style, singlemode, OS2	YL	<b>DFPCLCSTSyySM</b>
LC to SC, singlemode, OS2	YL	<b>DFPCLCSCSyySM</b>

Replace **yy** with standard lengths of **1, 2, 3** or **5** meters.

## High Density LC Uniboot Patch Cords

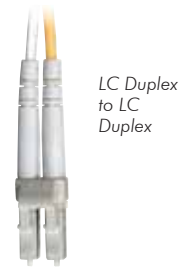
Description	Cable Color	Catalog No.
LC to LC, 50, OM3	AQ	<b>HDPCLC50G3Myy</b>
LC to SC, 50, OM3	AQ	<b>HDPCLCSC50G3Myy</b>
LC to LC, 50, OM4	AQ	<b>HDPCLC50G4Myy</b>
LC to SC, 50, OM4	AQ	<b>HDPCLCSC50G4Myy</b>

Replace **yy** with standard lengths of **1, 2, 3, 4, 5, 6, 8** or **10** meters.

## MSFP to LC Patch Cords

Description	Cable Color	Catalog No.
MSFP to LC, 50, OM3	AQ	<b>MSFPLC50G3Myy</b>
MSFP to LC, 50, OM4	AQ	<b>MSFPLC50G4Myy</b>

Replace **yy** with standard lengths of **1, 2, 3, 4, 5, 6, 8** or **10** meters.



LC Duplex to LC Duplex

