

Category 6A Shielded System

NEXTSPEED® Shielded Category 6A Jacks

Unit of Measure	A-Wired	B-Wired
2 per bag	SJ6A2A	SJ6A2B
24 per bag	SJ6A24A	SJ6A24B



NEXTSPEED® Shielded Patch Panels, Unloaded

Ports	Height Inches (mm)	Width Inches (mm)	Rack Units	Type	Color	Catalog No.
24	1.75" (45)	19" (483)	1	Flat	Silver	PSJ24S
24	1.75" (45)	19" (483)	1	Flat	Black	PSJ24BK
48	3.50" (89)	19" (483)	2	Flat	Silver	PSJ48S
48	3.50" (89)	19" (483)	2	Flat	Black	PSJ48BK
24	1.75" (45)	19" (483)	1	Angled	Black	PSJ24AU
48	3.50" (89)	19" (483)	2	Angled	Black	PSJ48AU



NEXTSPEED® Ascent Shielded Category 6A Patch Cords

Length	Catalog Number			
	Black	Blue	Gray	Yellow
3'	PC6ABK03	PC6AB03	PC6AGY03	PC6AY03
5'	PC6ABK05	PC6AB05	PC6AGY05	PC6AY05
7'	PC6ABK07	PC6AB07	PC6AGY07	PC6AY07
10'	PC6ABK10	PC6AB10	PC6AGY10	PC6AY10
15'	PC6ABK15	PC6AB15	PC6AGY15	PC6AY15
20'	PC6ABK20	PC6AB20	PC6AGY20	PC6AY20
25'	PC6ABK25	PC6AB25	PC6AGY25	PC6AY25

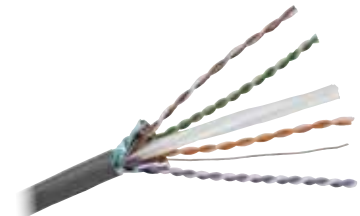
Made-to-order lengths are available from 30ft to 75ft in 5ft increments.
Spec sheets are available for these products online. Type the part number into the search box.



NEXTSPEED® Ascent 10GbE, FTP Cable, 4-Pair

Color	Plenum Spool	Riser Spool
Blue	C6AFTSPB	C6AFTSRB
Gray	C6AFTSPGY	C6AFTSRGY
White	C6AFTSPW	C6AFTSRW
Yellow	C6AFTSPY	C6AFTSRY

Note: All category rated cable is packaged in 1000 foot quantities.





Airflow

- Intuitive design optimizes airflow by creating designated cable pathways away from center of cabinet
- Can be used in front to rear, side to side, and bottom to top airflow configurations

Security

- 3-Point door locking system
- Standard locks for side covers

Administration

- Easier to identify and trace ports and cables
- Cable management spools with label fields to identify bundles of cable
- Unobscured cable pathways simplify tracing cables

Space Utilization

- Enhanced cable management features allow cable storage within the cabinet

Response Time

- Rack positions are identified on all four uprights aiding the installation of new gear
- Cable management spools snap into place
- Optional split rail kits maximize cabinet utilization by accommodating servers and switchgear in one cabinet

Aesthetics

- Stylized look enhances appearance of any computer room
- Cable management focused design manages and conceals cable bundles



Flexible

These Network Cabinets offer a high degree of flexibility and ease when managing cables.



Identification

RMU identification markings.



Efficiency

Perforated front and rear doors to optimize air flow.



Access

The network cabinets' extra width provides enhanced internal cable management maximizing the quantity of cables while allowing access to gear.

Hubbell Enclosures Full Size Cabinets

Network Cabinet

Type	Rack Units	Height Inches (mm)	Width Inches (mm)	Depth Inches (mm)	Color	Catalog No.
Standard w/sides	43	80" (2032)	30" (762)	32" (813)	Black	H2N8032
Standard w/sides	43	80" (2032)	30" (762)	36" (914)	Black	H2N8036
Standard w/sides	45	84" (2134)	30" (762)	32" (813)	Black	H2N8432
Standard w/sides	45	84" (2134)	30" (762)	36" (914)	Black	H2N8436
Seismic Z4 w/sides	43	80" (2032)	30" (762)	32" (813)	Black	H2N8032Z4
Seismic Z4 w/sides	43	80" (2032)	30" (762)	36" (914)	Black	H2N8036Z4
Seismic Z4 w/sides	45	84" (2134)	30" (762)	32" (813)	Black	H2N8432Z4
Seismic Z4 w/sides	45	84" (2134)	30" (762)	36" (914)	Black	H2N8436Z4
Without sides	43	80" (2032)	30" (762)	32" (813)	Black	H2N8032E
Without sides	43	80" (2032)	30" (762)	36" (914)	Black	H2N8036E
Without sides	45	84" (2134)	30" (762)	32" (813)	Black	H2N8432E
Without sides	45	84" (2134)	30" (762)	36" (914)	Black	H2N8436E



Server Cabinet

Type	Rack Units	Height Inches (mm)	Width Inches (mm)	Depth Inches (mm)	Color	Catalog No.
Standard w/sides	43	80" (2032)	24" (610)	42" (1067)	Black	H2S8042
Seismic Z4 w/sides	43	80" (2032)	24" (610)	42" (1067)	Black	H2S8042Z4
Without sides	43	80" (2032)	24" (610)	42" (1067)	Black	H2S8042E



Joining Kit



Contents	Catalog No.
6 each of the following: 1/4"-20 x 3/4" hex bolts, 1/4" lock washers, 1/4" flat washers, 1/4"-20 hex nuts	HPWJKIT

Caster Kit

Catalog No.
H2KMB



Vertical Cable Management Bar

Size	Catalog No.
For 80" cabinet	H280CM
For 84" cabinet	H284CM



Equipment Shelves, Cantilevered

- Content: Stationary 16ga shelf, #12-24 mounting hardware

Type	Load Capacity	Dimensions In (mm)	Catalog No.
Solid	50lb	3.5" (89)H x 17" (432)W x 14" (356)D	MCCCS19
Perforated	50lb	3.5" (89)H x 17" (432)W x 14" (356)D	MCCCS19P
Solid	200lb	7.0" (178)H x 19" (483)W x 20" (508)D	MCCCS19HD



Equipment Shelves, Center-Weighted

- Content: Stationary 16ga shelf, #12-24 mounting hardware

Type	Load Capacity	Dimensions In (mm)	Catalog No.
Solid	75lb	3.5" (89) H x 17" (432) W x 19" (483) D	MCCCS19



Cabinet Fan Kit, 460 CFM

- Enclosure will accept 2 Fan Kits

Description	Catalog No.
Network Cabinet Fan Kit	H2KNF
Server Cabinet Fan Kit	H2KSF





Airflow

- Open design removes all barriers to forced and convective airflow

Administration

- Cable management spools with label fields to identify bundles of cable
- Un-obscured cable pathways simplify tracing cables much easier to identify and trace ports and cables

Space Utilization

iFRAME®

- Columns mount on 2' pitch to align with floor and ceiling grids
- 1,400 lb load capacity and 100% utilization of rack space maximizes equipment density per square foot

NEXTFRAME®

- Modular components can be field configured to meet the unique needs of each application

Response Time

- Cable pathways are easily and completely open facilitating movement and additions of servers

iFRAME®

- Top ladder pieces cut to length and pre-drilled for 4" square work boxes at factory
- Cable management spools snap into place

NEXTFRAME®

- Organizers designed with rounded components to reduce the risk of cold flow and cable kinks to optimize transmission performance

Aesthetics

- Double hinging covers project image of quality
- Stylized look enhances appearance of any computer room



iFrame® Network Hardware Management System

Design

Innovative iFRAME® column system integrates grounding and bonding, power distribution, cable management, and equipment racking.

Simplified

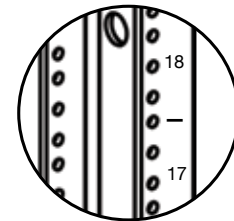
Straightforward, structured, comprehensive system.

Installation

Integrated vertical management with racking system consolidates hardware infrastructure components.



NextFrame® Equipment Racks



Identify

Rack mount unit is individually numbered for easy equipment location.



Rigidity

6" rack supplies additional support for larger cable bundling and Category 6A applications.



Versatility

Available in a variety of sizes and mounting configurations, NEXTFRAME® racks provide easy access to cabling and equipment.

iFrame Network Hardware Management System

iFRAME® Column

Contents: 1 iFRAME® column weldment, 1 bottom alignment installation aid and 1 iFRAME® top plate floor template, 1 full height front cover with 4 heavy-duty floor anchor washers dual-acting hinges and 2 dual-acting front cover hinges (not included in **IS7E**), 20 #12-24 x 5/8" dog point machine screws, 4 4" gates (Catalog No. **VCG4**) and washers, 12 snap in place cable routing spools, and 1 assembly hardware kit.

Rack Units	Height Inches (mm)		Width In. (mm)	Rail Depth In. (mm)	Overall Depth In. (mm)	Hole Type	Color	Catalog No.
	Overall	Usable						

Use: Without Raised Floor

45	84" (2134)	78.8" (2002)	5" (13)	3" (8)	14.17" (360)	12-24 Threaded	Black	IS7
45	84" (2134)	78.8" (2002)	10" (25)	3" (8)	14.17" (360)	12-24 Threaded	Black	IS710
45	84" (2134)	78.8" (2002)	15" (38)	3" (8)	14.17" (360)	12-24 Threaded	Black	IS715

Use: Square Holes with Cage Nuts

45	84" (2134)	78.8" (2002)	5" (13)	3" (8)	14.17" (360)	Square	Black	IS7M6
45	84" (2134)	78.8" (2002)	10" (25)	3" (8)	14.17" (360)	Square	Black	IS7M610

Use: As the Rear Columns in 4-Post Applications

45	84" (2134)	78.8" (2002)	5" (13)	3" (8)	14.17" (360)	12-24 Threaded	Black	IS7E
----	------------	--------------	---------	--------	--------------	----------------	-------	-------------

Note: Order two columns for the first rack in a line, then order only one column for each additional rack.

iFRAME Column Seismic

45	84" (2134)	78.8" (2002)	5" (13)	3" (8)	14.17" (360)	12-24 Threaded	Black	IS7Z4
----	------------	--------------	---------	--------	--------------	----------------	-------	--------------



IS7

Shown: door open, door closed

NextFrame Equipment Racks

3" Equipment Rack

Rack Units	Height Inches (mm)	Width Inches (mm)	Rail Depth Inches (mm)	Hole Type	Color	Catalog No.
24	48" (1219)	19" (483)	3" (76)	#12-24 Threaded	Black	HPW48RR19*
24	48" (1219)	23" (584)	3" (76)	#12-24 Threaded	Black	HPW48RR23*
36	68.5" (1676)	19" (483)	3" (76)	#12-24 Threaded	Black	HPW66RR19*
45	84" (2134)	19" (483)	3" (76)	#12-24 Threaded	Black	HPW84RR19*
45	84" (2134)	23" (584)	3" (76)	#12-24 Threaded	Black	HPW84RR23*
48	89.7" (2286)	19" (483)	3" (76)	#12-24 Threaded	Black	HPW90RR19*
48	89.7" (2286)	23" (584)	3" (76)	#12-24 Threaded	Black	HPW90RR23
51	96" (2438)	19" (483)	3" (76)	#12-24 Threaded	Black	HPW96RR19*
51	96" (2438)	23" (584)	3" (76)	#12-24 Threaded	Black	HPW96RR23*

*Add "ML" at end of Catalog No. for Mill Finish.

6" Equipment Rack

Rack Units	Height Inches (mm)	Width Inches (mm)	Rail Depth Inches (mm)	Hole Type	Color	Catalog No.
45	84" (2134)	19" (483)	6" (152)	#12-24 Threaded	Black	HPW84RR19D

4-Post, 19" Equipment Rack

Rack Units	Overall Height Inches (mm)	Usable Height Inches (mm)	Overall Width Inches (mm)	Depth Inches (mm)	Hole Type	Color	Catalog No.
45	84" (2134)	79" (2007)	20.2" (513)	24" (610)	#12-24 Threaded	Black	SF841924T
45	84" (2134)	79" (2007)	20.2" (513)	29.23" (742)	#12-24 Threaded	Black	SF841929T
45	84" (2134)	79" (2007)	20.2" (513)	36" (914)	#12-24 Threaded	Black	SF841936T
45	84" (2134)	79" (2007)	20.2" (513)	24" (610)	Square M6	Black	SF841924
45	84" (2134)	79" (2007)	20.2" (513)	29.23" (742)	Square M6	Black	SF841929
45	84" (2134)	79" (2007)	20.2" (513)	36" (914)	Square M6	Black	SF841936



HPW84RR19



HPW84RR19D



SF841924T



Ladder Rack



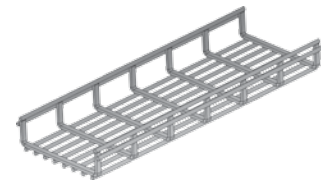
Modular System

Easily Configured for New and Existing Cable Routing

Versatility

Mounts to Floors, Walls, Ceilings, Equipment Racks and Cabinets

Wire Tray



Configurable

Tray can be installed overhead or under raised floors.



Ease of Use

Splice kit installs easily for joining tray sections and building corners.

Versatility

Shaped cross bars have more surface area and reduce pressure/strain on cables.



Round



Flat Style

Cross sectional view of cross members.

Security

- Pathways keep cabling secure and away from unnecessary handling
- High side walls help to contain cables

Administration

- Ladder Rack and Wire Tray have smooth welds to avoid snags when pulling cable

Space Utilization

- Wire Tray can be installed in overhead or in raised floor applications
- Configuring on-site allows for efficient space usage and installing around obstacles

Response Time/Performance

- Ladder rack and Wire Tray have high weight loading per foot capacities to meet the most demanding installation
- Wire Basket flat style ribbing has greater surface area to reduce cabling jacket stress, this reduces strain and protects cabling integrity

Aesthetics

- Available in standard powder coated stock colors, additional colors available for wire basket at request
- Hubbell's Basket Tray sweeps or right angled options allow for an easy installation