

FIBER

ASSEMBLIES

Hubbell's expanded line of pre-terminated fiber assemblies includes the labor-saving BIDnet engineered trunks, cords, hydras, and pigtails. The Hubbell BIDnet program is a custom quote and make-to-order service, featuring premium quality cable and components, assembled locally for quick, reliable delivery. Other new products include a full range of pigtail bundles, ribbon pigtails, high density LC and keyed LC patch cords, and MSFP style equipment cords.





ASSEMBLIES

PRODUCT	PAGE
FIBER TRUNK ASSEMBLIES	J3
FIBER PATCH CORDS	J5
FIBER PIGTAILS, SINGLE AND BUNDLED	J7
SPECIALTY PATCH CORDS AND PIGTAILS	J8





Performance

Premium OM3 and OM4 multimode fiber; bend insensitive OS2 singlemode fiber; featuring low loss MTP terminations.



Custom Made to Order

Configured to exact customer specifications.



Quality and Reliability

Precision factory machine-polished epoxy terminations, 100% tested.



Labor Savings

Ideal solution for data centers, requiring no field termination.



- MISSION CRITICAL® 25-Year Warranty*
- Plug-n-Play Installation for Rapid Deployment
- 100% Factory Tested, Data Included
- RoHS Compliant

**Project must be registered in accordance with the Hubbell MISSION CRITICAL® program.*

Standards/Listings/Verifications

- TIA-568-C.0, C.1 and C.3
- Telcordia GR-326-CORE
- Telcordia GR-409
- TIA-604-FOCIS
- ANSI/ICEA S-83-596
- IEEE 802.3

MTP Connector Specifications

- Gender: female has no alignment pins; male has pins
- MM insertion loss: <0.50 dB (standard loss)
- MM insertion loss: <0.35 dB (low loss)
- SM insertion loss: <0.55 dB (0.35 dB typical)
- SM return loss: >50 dB
- MM return loss: >26 dB
- Standard polarity: TIA-568-C.3, Type "A"

Single Fiber Connector Specifications

- MM insertion loss: <0.50 dB (0.35 dB typical)
- SM insertion loss: <0.35 dB (0.15 dB typical)
- SM UPC return loss: >50 dB
- SM APC return loss: >65 dB
- MM return loss: >26 dB
- Ferrule material: zirconia ceramic
- Mating durability: 500 cycles

MTP Fiber Cords

Available Options

- Connectors: MTP female
- Fiber types: 62/OM1, 50/OM2, 50/OM3, 50/OM4, SM/OS2
- Fiber strand count: 12, 24, 48, 72, 96 and 144 fibers
- Cable: plenum, riser, or LSZH (armored or non-armored)
- Polarity: TIA-568C.3 Type A, B, or C



MTP Male and Gender Change Cords

Available Options

- Connectors: MTP female or MTP male
- Fiber types: 50/OM3, 50/OM4, SM/OS2
- Fiber strand count: 12, 24, 48, 72, 96 and 144 fibers
- Cable: plenum, riser, or LSZH (armored or non-armored)
- Polarity: TIA-568C.3 Type A, B, or C



40 Gb/s and 100 Gb/s MTP Fiber Cords

Available Options

- Connectors: MTP female, 12-fiber or 24-fiber
- Fiber types: 50/OM3, 50/OM4
- 40 Gb/s fiber strand count: 12, 24, 48, 72, 96 and 144 fibers
- 100 Gb/s fiber strand count: 24 and 48 fibers
- Cable: plenum, riser, or LSZH
- Polarity: 40GBASE-SR4 or 100GBASESR10
- Lengths: 1 to 150 meters (3 to 500 ft) channel
- Application limits:
 - OM3 40G/100G limit: 100 m (328 ft)
 - OM4 40G/100G limit: 150 m (492 ft)



Distribution Trunks and Pigtails

Available Options

- Connectors: LC, MSFP, keyed LC, SC, SC/APC, ST, FC, FC/APC
- Fiber types: 62/OM1, 50/OM2, 50/OM3, 50/OM4, SM/OS2
- Fiber strand count: 6, 12, 24, 48, 72, and 96 fibers
- Cable: plenum, riser, or LSZH (armored or non-armored)
- Fan-out options: 900 micron buffer



Transition Assemblies

Available Options

- Connectors: MTP female to LC or SC duplex
- Fiber types: 50/OM3, 50/OM4, SM/OS2
- Fiber strand count: 12, 24 and 48 fibers
- Cable: plenum, riser, or LSZH (armored or non-armored)
- Polarity: TIA-568C.3, Type A,B or C



Mesh Bundle Trunks (2.0mm Duplex Zip Cord)

Available Options

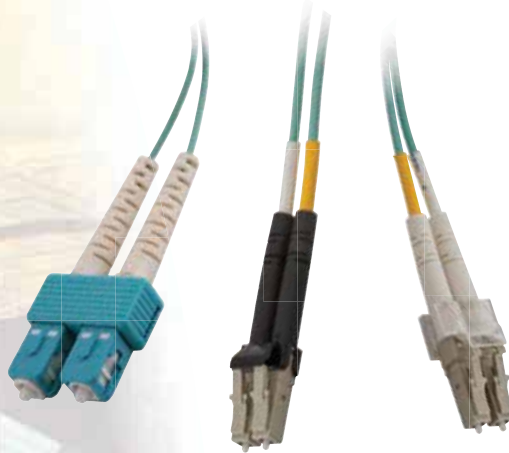
- Connectors: LC, MSFP, keyed LC, SC, SC/APC, ST, FC, FC/APC
- Fiber types: 62/OM1, 50/OM2, 50/OM3, 50/OM4, SM</OS2
- Fiber strand count: 6, 12, 24, 48, 72, and 96 fibers
- Cable: plenum, riser, or LSZH
- Outer sheath: polyester mesh

Distribution Fan-Out Trunks and Pigtails

Available Options

- Connectors: LC, MSFP, keyed LC, SC, SC/APC, ST, FC, FC/APC
- Fiber types: 62/OM1, 50/OM2, 50/OM3, 50/OM4, SM/OS2
- Fiber strand count: 6, 12, 24, 48, 72 and 96 fibers
- Cable: plenum, riser, or LSZH (armored or non-armored)
- Fan-out: 2.0mm furcation tubing

All BIDnet fiber trunk assemblies are custom made-to-order items. Please call our insides sales team for price and lead time. Refer to product data sheets for nomenclature and detailed design information. Application limits apply to available lengths.



HUBBELL
Advantage

- Premium Quality Cable and Components, 100% Factory Tested
- Individually Bagged with Dust Caps and Factory Test Data Included, Ready to Install
- Custom Configurations Quoted and Made to Order
- Space-Saving 2.0mm Jacket, RoHS Compliant

Specifications

- Mated pair insertion loss:
MM: <0.50 dB (0.35 dB typical)
SM: <0.35 dB (0.15 dB typical)
- Return loss: SM >55 dB, MM >26 dB
- Ferrule material: zirconia ceramic
- Mating durability: 500 cycles

Standards/Listings/Verifications

- TIA-568-C.3
- TIA-604-FOCIS
- Telcordia GR-326-CORE

SC Duplex to SC Duplex



SC to SC Patch Cords

Duplex/Multimode

	Cable Color	Catalog No.
SC to SC, 62.5, OM1	OR	DFPCSCSCCyyMM
SC to SC, 50, OM2	OR	DFPCSCSCDyyMM
SC to SC, 50, OM3	AQ	DFPCSCSCEyyMM

Duplex/Singlemode

SC to SC, SM, OS2	YL	DFPCSCSCSyySM
-------------------	----	----------------------

Replace yy with standard lengths of **1, 2, 3, 5** or **10** meters.

ST-style to ST-style Duplex



ST-Style to ST-Style Patch Cords

Duplex/Multimode

	Cable Color	Catalog No.
ST to ST-style, 62.5, OM1	OR	DFPCSTSTCyyMM
ST to ST-style, 50, OM2	OR	DFPCSTSTDyyMM

Duplex/Singlemode

ST to ST-style, SM, OS2	YL	DFPCSTSTSyySM
-------------------------	----	----------------------

Replace yy with standard lengths of **1, 2, 3, 5** or **10** meters.

MT-RJ to MT-RJ Duplex MM
MT-RJ Duplex to ST-style Duplex MM



MT-RJ Patch Cords

Duplex/Multimode

	Cable Color	Catalog No.
MT-RJ to MT-RJ, 62.5, OM1	BL/OR	DFPCRJRJCyyMM
MT-RJ to ST-style, 62.5, OM1	BL/OR	DFPCRJSTCyyMM
MT-RJ to SC, 62.5, OM1	BL/OR	DFPCRJSCCyyMM

Replace yy with standard lengths of **1, 2, 3** or **5** meters.

SC Duplex to ST-style Duplex



ST-Style to SC Patch Cords

Duplex/Multimode

	Cable Color	Catalog No.
ST-style to SC, 62.5, OM1	OR	DFPCSTSCCyyMM
ST-style to SC, 50, OM2	OR	DFPCSTSCDyyMM

Duplex/Singlemode

ST-style to SC, SM, OS2	YL	DFPCSTSCSyySM
-------------------------	----	----------------------

Replace yy with standard lengths of **1, 2, 3, 5** or **10** meters.

LC Patch Cords

Duplex/Multimode

Description	Cable Color	Catalog No.
LC to LC, 62.5, OM1	OR	DFPCLCLCCyyMM
LC to ST-style, 62.5, OM1	OR	DFPCLCSTCyyMM
LC to SC, 62.5, OM1	OR	DFPCLCSCCyyMM
LC to LC, 50, OM2	OR	DFPCLCLCDyyMM
LC to SC, 50, OM2	OR	DFPCLCSCDyyMM
LC to LC, 50, OM3	AQ	DFPCLCLCEyyMM
LC to SC, 50, OM3	AQ	DFPCLCSCEyyMM
LC to LC, 50, OM4	AQ	DFPCLCLCFyyMM
LC to sC, 50, OM4	AQ	DFPCLCSCFyyMM

Duplex/Singlemode

Description	Cable Color	Catalog No.
LC to LC, singlemode, OS2	YL	DFPCLCLCSyySM
LC to ST-style, singlemode, OS2	YL	DFPCLCSTSyySM
LC to SC, singlemode, OS2	YL	DFPCLCSCSyySM

Replace **yy** with standard lengths of **1, 2, 3** or **5** meters.

High Density LC Uniboot Patch Cords

Description	Cable Color	Catalog No.
LC to LC, 50, OM3	AQ	HDPCLC50G3Myy
LC to SC, 50, OM3	AQ	HDPCLCSC50G3Myy
LC to LC, 50, OM4	AQ	HDPCLC50G4Myy
LC to SC, 50, OM4	AQ	HDPCLCSC50G4Myy

Replace **yy** with standard lengths of **1, 2, 3, 4, 5, 6, 8** or **10** meters.

MSFP to LC Patch Cords

Description	Cable Color	Catalog No.
MSFP to LC, 50, OM3	AQ	MSFPLC50G3Myy
MSFP to LC, 50, OM4	AQ	MSFPLC50G4Myy

Replace **yy** with standard lengths of **1, 2, 3, 4, 5, 6, 8** or **10** meters.



LC Duplex to LC Duplex

