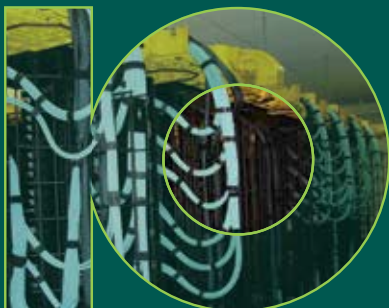
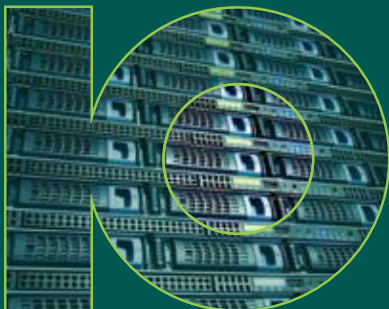


- Factory Tested, Premium Ceramic Components, and Bend-Insensitive Laser-Optimized Fiber Cable
- Installation Made Easy with PROclick® Pre-Polished Connectors, Pre-Terminated Cassettes and Custom Fiber Trunk Assemblies
- Full 10GBASE-S/LX Application Assurance to IEEE 802.3 Fiber Channel Distance Limits
- Compact Optical Cabling Systems with Low Power Consumption Save Space and Energy



Hubbell's OptiChannel fiber cabling systems provide a reliable end-to-end solution for local, wide area and data center network deployments. Interconnecting building backbone, campus, data center and fiber to the desktop, Hubbell's warranty-backed fiber channel products assure long-term reliability in delivering 10G applications and beyond.



Features

- Precision modular panels and MPO cassettes offer high performance and rapid deployment
- High yield PROclick® LC and SC pre-polished connectors terminate in less than 60 seconds
- New line of cable with premium optical fiber exceeds all TIA, ICEA, and UL standards
- Patch cords and trunk assemblies test below TIA limits, minimizing channel insertion loss
- New small form patch cords have a 1.8 mm cable diameter to minimize cable congestion

Applications

- Extended 10G fiber distances:
 - 300 meters (984 ft) over OM3 fiber
 - 550 meters (1,804 ft) over OM4 fiber
 - 10,000 meters (3,047 ft) over OS2 fiber
- Building backbone and horizontal fiber cabling
- Data center SAN/switch optical network fabric
- Government, medical, education, financial

Specifications

- TIA-568-C.3: fiber cabling and components standard
- TIA-604-FOCIS: connector geometry and mating specifications
- TIA-492: optical fiber specifications (OM1, OM2, OM3, OM4, OS2)
- UL-V0: flame rating for component materials
- UL 910: plenum cable flame rating
- UL-1666: riser cable flame rating
- ICEA S-83-596: standard for indoor distribution cable
- ICEA S-104-696: standard for indoor/outdoor riser cable
- EIA 310-D: standard for racks, cabinets, and enclosures



Hubbell is a Solution Developer Partner within the Cisco Developer Network Program

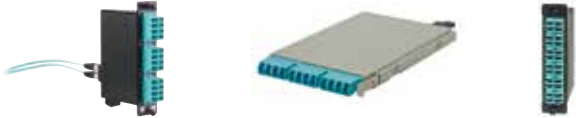
PROclick® LC and SC Connectors, Packs of 12



Description	Catalog No.
LC, OM3	FCLC900K50GM12
LC, SM	FCLC900KSM12
SC, OM1	FCSC900K62M12
SC, OM3	FCSC900K50GM12
SC, SM	FCSC900KSM12
SC, SM, APC	FCSC900KASM12

Note: For 100 packs, replace "12" with "100" in Catalog No.

MPO to LC Cassettes: Stocked, 100% Factory Tested



Description	Catalog No.
LC Duplex, 12-Port, OM3	OCLC50G
LC Duplex, 12-Port HD, OM3	OCLCHD50G3
LC Duplex, 24-port, OM3	OCLCD50G
LC Quad, 24-port OM3	OCLCQ50G
LC Duplex, 12-Port OS2	OCLCSM

FSP-Series LC Ceramic Patch Panels: Stocked



Description	Catalog No.
LC Duplex, 12-Port, Aqua	FSPLCDS6AQ
LC Duplex, 24-Port, Aqua	FSPLCDS12AQ
LC Quad, 24-Port, Aqua	FSPLCQS6AQ
LC Quad, 24-Port, Yellow	FSPLCQS6Y
LC Duplex, 12-Port, Blue	FSPLCDS6B
LC Duplex, 12-Port, Yellow	FSPLCDS6Y
SC Duplex, 12-Port, Aqua	FSPSCDS6AQ
SC Duplex, 12-Port, Blue	FSPSCDS6B
SC Duplex, 12-Port, Yellow	FSPSCDS6Y

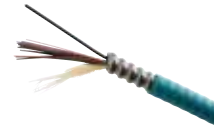
New Riser Duplex Patch Cords: Fast Delivery



Description	Catalog No.
LC to LC, OM3	DFRCLCLCE_xMM
LC to MSFP, OM3	MSFPPLC50G3M_x
LC to SC, OM3	DFRCLCSCE_xMM
SC to SC, OM3	DFRCSCSCE_xMM
LC to LC, OS2	DFRCLCLCS_xSM
SC to SC, OS2	DFRCSCSCS_xSM
SC to SC, APC, OS2	DFRCSCASCSAS_xSM

Note: **x** = 1 to 10 meter riser, **x** = 1 to 25 meter plenum.
For Plenum, replace "DFRC" with "DFPC".

New Hubbell Cable Line: Sold in Feet, Fast Delivery



Description	Catalog No.
Indoor, Tight Buffer	HFCD1 Series
Indoor, TB, Armored	HFCD15 Series
Indoor/Outdoor, Tight Buffer	HFCD14 Series
Indoor/Outdoor, TB Armored	HFCD19 Series

MPO Fiber Trunks and Transition Assemblies

- Custom Made to Order, 100% Factory Tested
- OM3, OM4, and OS2 Fiber
- Strand counts: 12, 24, 48, 72, 96, and 144 Fiber
- Plenum or Riser
- Non-Armored or Armored
- Any length and polarity, with custom labeling
- Contact Hubbell Premise Wiring to configure

