

Anchors

POLE KEY & SQUARE



Pole Key Anchor (Less Rod) Black Asphalt Coated

Pole Key Anchors are formed from structural steel and deeply ribbed for extra strength and reinforcement. Expands upon impact into undisturbed soil. The anchors are coated with special asphalt paint to protect against corrosive soil conditions.

Cat. No.	Blade Width (inches)	Expanded Area (Sq.In)	Expanded Width (inches)	Resisting Moment – Pound-Feet Anchor at 5' Depth and with 8" x 48" Counter Key				
				† Soil Class				
				3	4	5	6	
276PKA	7	276	27-1/4	55,125	47,500	36,750	28,875	*

* Divide resisting moment by distance, in feet, from ground level to center of load to determine maximum unbalanced load to be supported.

† These numbers indicate type of soil: 3. Compacted clay and gravel mixed, shale, broken rock, hardpan. 4. Compacted sand, claypan, compacted gravel. 5. Loose sand, gravel and clay, compacted coarse sand. 6. Clay loam, damp clay, compacted sand fines, loose coarse sand. 7. Silt loam, loose sand fines, wet clay, miscellaneous fill.



276PKA

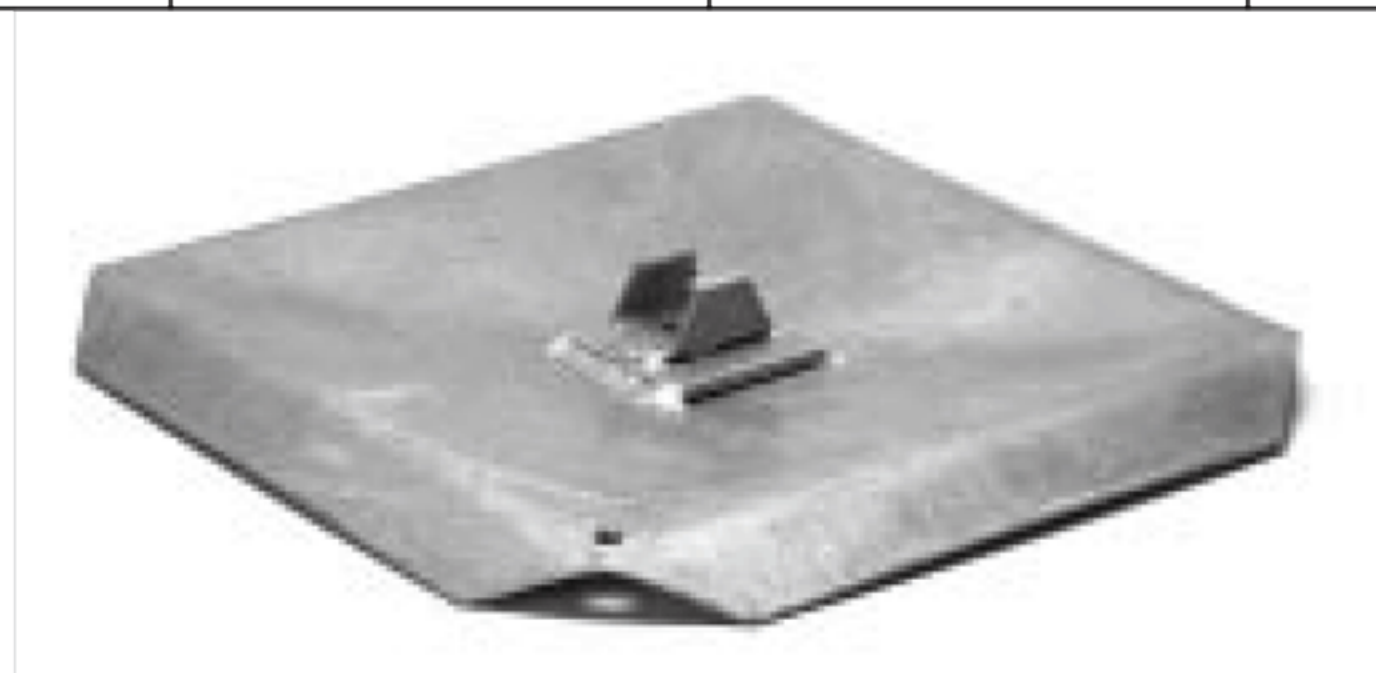
Square Anchors

Hot dip Galvanized

Painted available upon request Gray or black add suffix P

Nut retainer welded to bottom plate to provide means of anchor rod recovery.

Cat. No.	Dimension (inches)	Area sq.in	Anchor rod diameter (inches)	Std.Pkg.	Wt.-lbs./C
250SAP	16-1/4 x 16-1/4	250	5/8-3/4	1	1100
250SAP1	16-1/4 x 16-1/4	250	3/4 x 1	1	1100
400SAP	20 x 20	400	3/4 x 1	1	2650
400SAP2	20 x 20	400	1 to 1-1/4	1	2650



250SAP