

Grounding

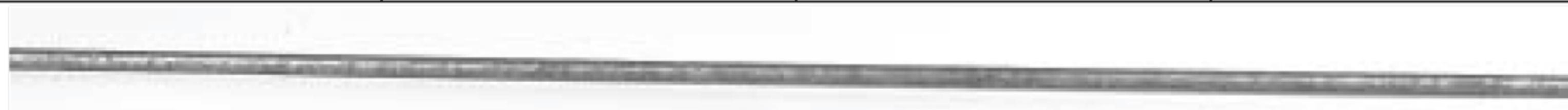
RODS & PLATES



Ground Rods, Galvanized

All Ground Rods come with cone point.

Cat.No.	Size	Pkg.Qty.	Wt.-lbs./ C
1205G	1/2 x 5'	10	330
1206G	1/2 x 6'	10	395
1207G	1/2 x 7'	10	460
5806G	5/8 x 6'	10	600
5807G	5/8 x 7'	5	700
5808G	5/8 x 8'	5	800
5810G	5/8 x 10'	5	1000
3406G	3/4 x 6'	5	900
3408G	3/4 x 8'	5	1200
3410G	3/4 x 10'	5	1500
3420G	3/4 x 20'	1	3000
1008G	1 x 8'	3	2200
1010G	1 x 10'	2	2500
Black Ungalvanized Ground Rods:			
5808B	5/8 x 8'	5	800
5810B	5/8 x 10'	5	1000



3410G

Grounding Plate

One grounding plate. One ground connector. Shallow pit required. No power equipment required. Ground plates are easy to carry and transport. One ground plate weighs only 11 lbs. each. Pit in which ground plate rests must remain open until inspection has taken place.

Cat.No.	Description	Pkg.Qty.	Wt. Ea.
Ontario / Atlantic / British Columbia:			
1016.GPGC	1/4" x 10" x 16" plate c/w bronze grounding connector, galvanized #733.C, wire range #8 to 3/0	4	11.5 lbs.
1016.GPG	10" x 16" grounding plate less connector, galvanized	4	11 lbs.
Alberta:			
1016 GPL	1/4" x 10" x 16" black plate, not galvanized	4	11 lbs.
1016 GPC	1/4" x 10" x 16" black plate, c/w connector, not galvanized	4	11.5 lbs.

CSA approved and stamped.
Also available with 3/4" shank.



1016.GPGC