

# SE Series



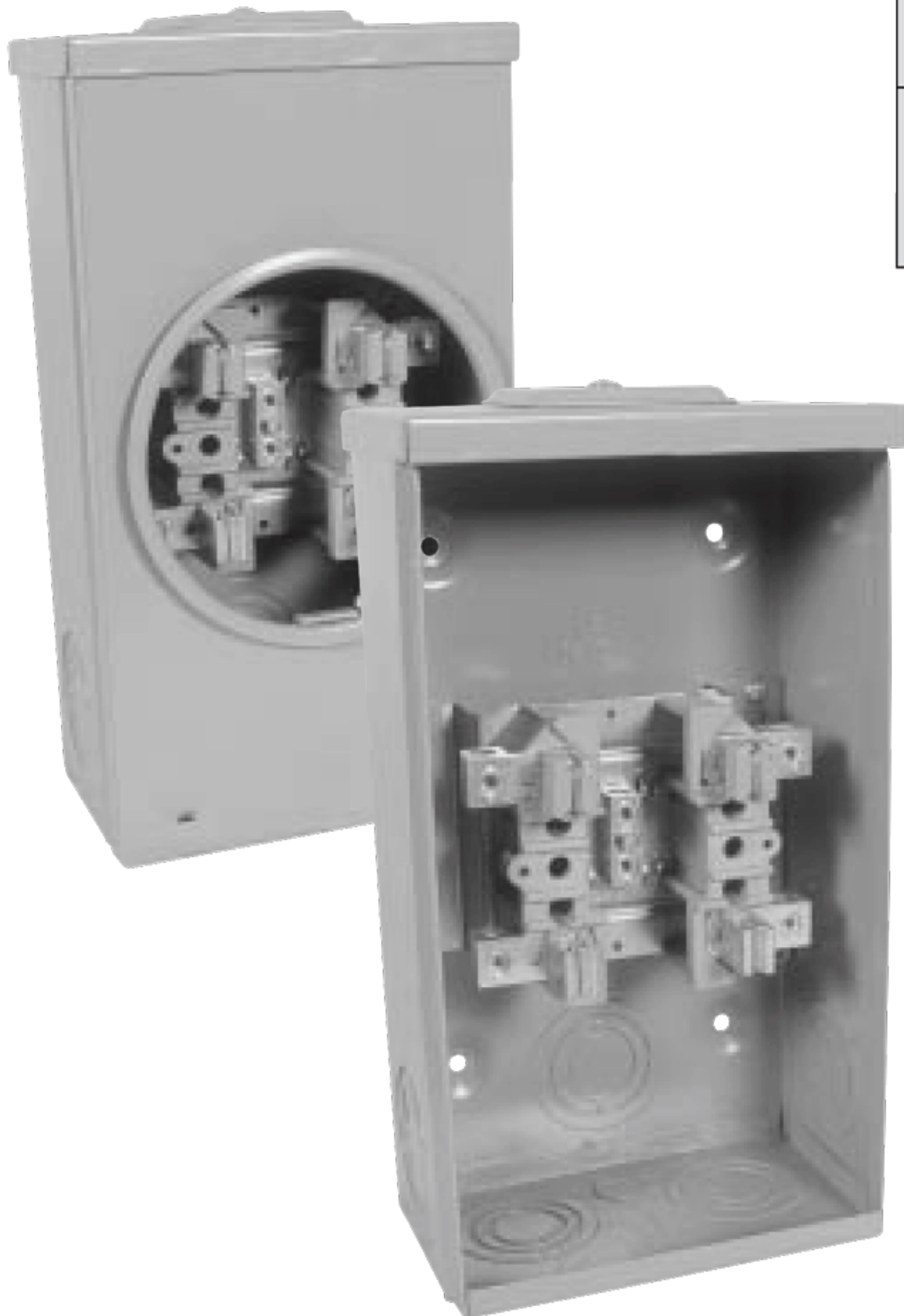
METER  
SOCKETS

## 100 AMP - 600 VOLTS King Size

CATALOGUE #	DESCRIPTION	WEIGHT
<b>SE400PW</b>	Overhead, hub opening, hub plate not included	8 lbs.
<b>SE400JW</b>	Overhead c/w 1 1/4" hub	8 lbs.
<b>SE400TW</b>	Underground blank top	8 lbs.
<b>SE400RW</b>	Combination overhead / underground	8 lbs.
<b>SE400BW</b>	Overhead c/w twin 1 1/4" hubs	9 lbs.
<b>SE400BP</b>	Overhead twin closure plates not included	8 lbs.
<b>SE420RW</b>	Combination OH/UG c/w water heater lugs	8 lbs.

- Conductor range No. 6 - 1/0 AWG CU/AL
- CSA weatherproof enclosure 3
- Approved for copper or aluminum
- For extra ground lug on neutral add suffix NB - Used in New Brunswick

- Field adaptable accessories
- 5th Jaw at 9 O'clock - **SXK503**
- Insulated neutral - **ink 100**
- 5th Jaw at 6 O'clock - **ink 105**



KNOCKOUT CODE	CONDUIT SIZE
<b>AA</b>	1/2"
<b>D</b>	1 1/4", 1 1/2", 2"
<b>E</b>	1", 1 1/4", 1 1/2", 2"

