

**LED 12VDC MAGNETIC DIMMABLE  
30W POWER SUPPLY**

by

**GM Lighting**

Project: \_\_\_\_\_

Type: \_\_\_\_\_

Location: \_\_\_\_\_

Contact Phone: \_\_\_\_\_

**PRODUCT DESCRIPTION**

Smallest dimmable Class II hardwire LED dimming magnetic power supply on the market that works with conventional low voltage magnetic wall mount dimmer with on/off switch. Features include high efficiency, excellent load regulation and no wattage de-rating under 100% load. There is no minimum load requirements for this transformer/driver.

**PRODUCT SPECIFICATIONS**

**Construction:** Transformer is encapsulated in all metal construction enclosure. Enclosure temperature should not exceed 70°C (158°F) @ 40°C (104°F) ambient. Wiring compartment has 2 knockouts sized for 3/4" screw cable conductors. Removable cover for wiring compartment is secured in place by clips and one screw. Black powder coated.

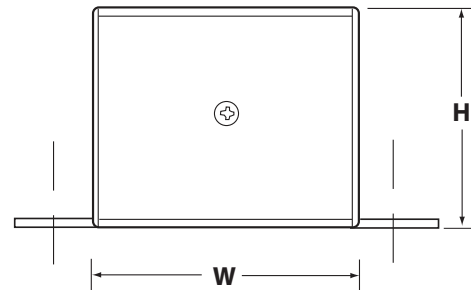
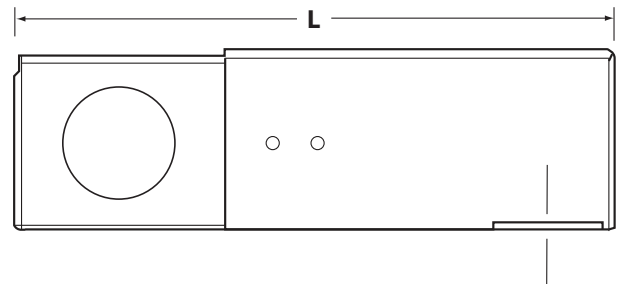
**Electrical:** Input and output terminals are terminal block. Input leads are 20 AWG. Output leads are 16 AWG. Lead insulation rated to 105°C (221°F). Transformer utilizes a class B 130°C (266°F) insulation system. Maximum load is 30W. Coil former is double section bobbin. Auto reset.

**Dimming:** Works with low-voltage magnetic wall dimmer with on/off switch.

**Mounting:** Surface mount with front mounting tab.

**Warranty:** 4 years.

**Label:** ETL listed for indoor and outdoor use.



Catalog Number	Max. Wattage	Input Voltage	Output Voltage	Weight	Dimensions		
					L	W	H
LTHM30-DIM	30W	120V/60Hz	12VDC	2.0 lb.	6.03"	1.98"	1.43"

For voltage drop - see [www.gmlighting.net/voltagedrop.html](http://www.gmlighting.net/voltagedrop.html) or consult GM Lighting Product catalog, page 19.

**GM Lighting**

GM Lighting, LLC • 9830 W. 190th St. • Unit F • Mokena, IL 60448  
 Toll-Free: (866) 671-0811 FAX: (708) 478-2640 • [www.gmlighting.net](http://www.gmlighting.net)  
 e-mail: [gmlightingllc@sbcglobal.net](mailto:gmlightingllc@sbcglobal.net) • Specifications subject to change without notice.  
 LTHM30-DIM\_100312