

100-240VAC 2W RECTANGULAR FLAT AND LOUVERED TRIM LED STEP AND PATHWAY LIGHTING

PROJECT

TYPE

CATALOG NUMBER

PRODUCT DESCRIPTION

Step and pathway lighting has become a bit brighter with the introduction of GM Lighting's NEW 100-240VAC 2W LED Rectangular Step and Pathway Light. The step light's round flat trim offers a highly visible illuminated detail and the louvered trim directs light onto the horizontal plane directly below it, making your indoor or outdoor steps or pathways visible and safe to access.

PRODUCT SPECIFICATIONS

Construction: Solid die cast face plate.

Electrical: 100-240VAC 2W. 50,000 hour life.

Power Supply: Line voltage. No power supply needed.

Dimming: Not dimmable.

Mounting: Easy to mount. Please check local construction codes.

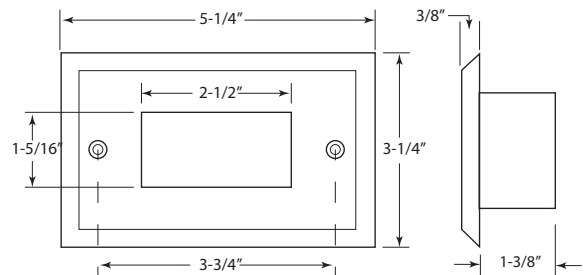
Rating: Rated for indoor or outdoor applications. UL listed for through wiring with junction box.



STLS-FT-BNK



STLS-LT-B



Catalog No.	Description	Wattage	Dimensions	Finish	LED Life
STLS-FT-W	Rectangular Shield	2W	5-1/4"W x 3-1/4"H x 3/8"D	White	50,000 hrs.
STLS-FT-B	Rectangular Shield	2W	5-1/4"W x 3-1/4"H x 3/8"D	Black	50,000 hrs.
STLS-FT-BNK	Rectangular Shield	2W	5-1/4"W x 3-1/4"H x 3/8"D	Brushed Nickel	50,000 hrs.
STLS-FT-DBZ	Rectangular Shield	2W	5-1/4"W x 3-1/4"H x 3/8"D	Dark Bronze	50,000 hrs.
STLS-FT-CP	Rectangular Shield	2W	5-1/4" x 3-1/4" x 3/8"D	Copper	50,000 hrs.
STLS-LT-W	Rectangular Louvered Shield	2W	5-1/4"W x 3-1/4"H x 3/8"D	White	50,000 hrs.
STLS-LT-B	Rectangular Louvered Shield	2W	5-1/4"W x 3-1/4"H x 3/8"D	Black	50,000 hrs.
STLS-LT-BNK	Rectangular Louvered Shield	2W	5-1/4"W x 3-1/4"H x 3/8"D	Brushed Nickel	50,000 hrs.
STLS-LT-DBZ	Rectangular Louvered Shield	2W	5-1/4"W x 3-1/4"H x 3/8"D	Dark Bronze	50,000 hrs.
STLS-LT-CP	Rectangular Louvered Shield	2W	5-1/4"W x 3-1/4"H x 3/8"D	Copper	50,000 hrs.

For a full line of spec sheets and mounting instructions, please see our website at www.gmlighting.net