

12VDC STANDARD OUTPUT FLEXIBLE LED LINEAR RIBBON IN A 30M (98-1/2') REEL

PROJECT

TYPE

CATALOG NUMBER

PRODUCT DESCRIPTION

LEDTask is a flexible LED linear ribbon that conforms to straight, curved and irregular architectural coves, bannisters, recesses, and other constructs where even, energy saving LED illumination is specified. Available in a 30 meter (98-1/2') reel, LEDTask can be cut in the field to achieve virtually any custom installation. Available in 5500K* Pure White, 2700K* and 3500K* Warm White.

PRODUCT SPECIFICATIONS

Construction: LEDTask is a flexible LED ribbon that conducts power via the LTW series ribbon to power supply connectors. Included in each reel are 3 LTW-24 connectors and 1 LTW-24 affixed to start of reel.

Electrical: Each of the 1872 LED's per reel (19 LED's per foot) are .08W, equal-ling 1.52 watts per foot. Total Amps per reel is 12. 50,000 hr. life.

Temperature: 2700K, 3500K and 5500K.

Power Supplies: See chart at right for complete descriptions and catalog numbers. **Must be wired every 32' (5 amps).**

Dimming: Yes with dimmable power supplies (see at right) utilizing low voltage magnetic on/off wall dimmer (by others).

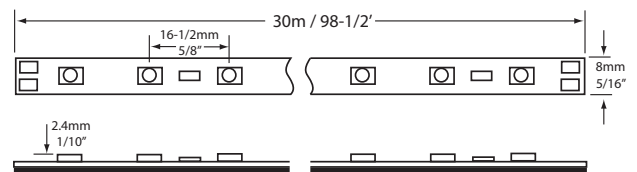
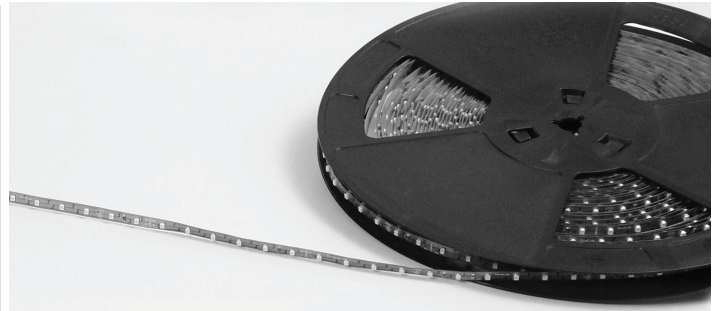
Mounting: 3M double stick mounting tape pre-affixed to LEDTask Flexible Ribbon.

Connectors: See chart below

Label: UL #326687.

American Lighting Association

* Kelvin temperature (color) ±200



12VDC Electronic Power Supplies / Dimmable Power Supplies

LTP-2	25 W 2 amp - switchable - 120V cord and plug. 12VDC@2A. Electronic.
LTP-6	60W 5 amp - switchable - 120V cord and plug. 12VDC@5A. Electronic.
LTH-2	2.1 amp - 12VDC - 25W metal chassis hardware. Screw terminals
LTH-4	4.2 amp - 12VDC - 50W metal chassis hardware. Screw terminals
LTH-8	8.5 amp - 12VDC - 100W metal chassis hardware. Screw terminals and mounting feet. Electronic.
LTH-16	16.7 amp - 12VDC - 200W metal chassis hardware. Screw terminals and mounting feet. Electronic.
LTH-25	25 amp - 12VDC - 320W metal chassis hardware. Screw terminals and mounting feet. Electronic.
LTHM30-DIM	Dimmable - Class II, 120VAC, 60Hz, maximum 30W. Output: 12VDC.
LTHM50-DIM	Dimmable - Primary: 120VAC, 60Hz, 0.33A Secondary: 12VAC, 12VDC, 4A Max. 50W
LTH-60-DIM	Dimmable - Primary: 120VAC, 60Hz, 0.50 amps. Secondary: 12V AC/DC, 12VDC, 5 amps, maximum 60W.
LTHM-100-DIM	Dimmable - Input: 120VAC, 60 Hz. Output: 12VDC, 8A max., 100W, Nema 3R enclosure.
LTHM-200-DIM	Dimmable - Input: 120VAC, 60 Hz. Output: 12VDC, 16A max., 200W, Nema 3R enclosure.
LTHM-300-DIM	Dimmable - Input: 120VAC, 60 Hz. Output: 12VDC, 25 amps, 300W, Nema 3R enclosure. UL listed for indoor and outdoor use.
LTHM150-CL2-DIM	Dimmable - Input: 120VAC, 60 Hz. , 5A, 3 circuit Class II Output: 12VDC, Manual reset, 150W, UL for indoor use.
LTHM300-CL2-DIM	Dimmable - Input: 120VAC, 60 Hz, 6 circuit Class II Output: 12VDC x 6, 25A Max. 300W, UL listed for indoor and outdoor use.
GMWD-600	600W magnetic wall dimmer with on/off switch. Single pole. 120V/60Hz. White finish. For use with all GM Lighting 12VDC and 24VDC Magnetic Dimmable Power Supplies.

Flexible LED Ribbon Connectors

LTC-1	Ribbon to ribbon connector
LTC-3	3" flexible ribbon to ribbon connector
LTC-12	12" flexible ribbon to ribbon connector
LTC-24	24" flexible ribbon to ribbon connector
LTC-36	36" flexible ribbon to ribbon connector
LTC-60	60" flexible ribbon to ribbon connector
LTW-6	6" flexible ribbon to power supply connector
LTW-24	24" flexible ribbon to power supply connector
LTW-48	48" flexible ribbon to power supply connector
LTW-60	60" flexible ribbon to power supply connector

Model Number	Length	Total LED's	LED Wattage	Total Amps	Lumens per Ft.*	Color	LED Life
LTR300-100-SO-27	30M / 98-1/2'	1872 (19/FT.)	.08W (1.52W/FT.)	12	111	2700K WARM WHITE	50,000 HRS.
LTR300-100-SO-WW	30M / 98-1/2'	1872 (19/FT.)	.08W (1.52W/FT.)	12	117	3500K WARM WHITE	50,000 HRS.
LTR300-100-SO-PW	30M / 98-1/2'	1872 (19/FT.)	.08W (1.52W/FT.)	12	134	5500K PURE WHITE	50,000 HRS.

Connectors: Each reel comes complete with 15 LTW-24 flexible ribbon to power supply connectors.