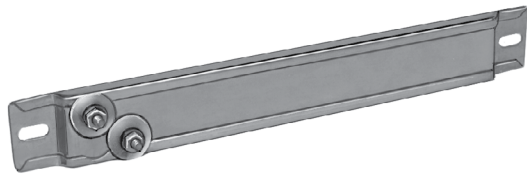


# Strip & Finned Strip Heaters - SS

Type SS strip heaters have two offset bolt type terminals at one end. Table 1 lists heaters having aluminized steel sheath.



## Aluminized Steel Sheath

The entire heater assembly is encased in an aluminized steel sheath and is compressed under high pressure. The sheath provides both corrosion resistance and an attractive appearance. Aluminized steel strip heaters are suitable for applications where the maximum sheath temperature does not exceed 538 °C (1000°F).

If higher temperatures are anticipated, use stainless steel heaters listed in Table 2.

## Installation

Standard strip heaters listed are rated at 120 and 240 volts. A limited selection of 287V heaters is also tabled. All strip heaters can be used on voltages lower than listed for reduced wattage, and some designs can also be used on higher voltages - check factory.

Whenever voltage to ground exceeds 300V, secondary insulators must be used. See page A34.

## To Order Specify

Quantity, catalog number, voltage, wattage and special features.

continued on next page...

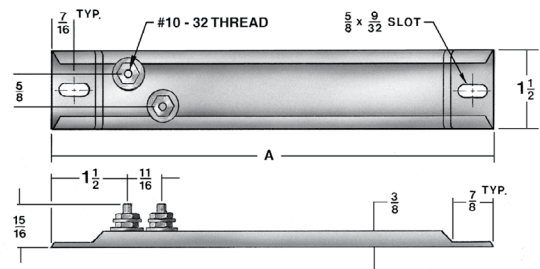


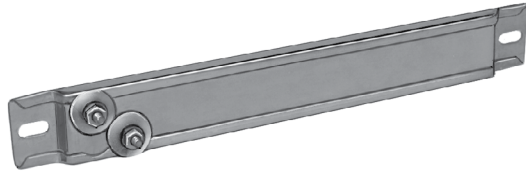
TABLE 1 - Type SS Strip Heaters - Terminals at One End/Aluminized Steel Sheath

| 'A' Dim.<br>in. | mm   | Watts | Watts Per       |                 | Caloritech™ Catalog No. |        |           | Chromalox Cat. No. |        |
|-----------------|------|-------|-----------------|-----------------|-------------------------|--------|-----------|--------------------|--------|
|                 |      |       | in <sup>2</sup> | cm <sup>2</sup> | 120V                    | 240V   | 287V      | 120V               | 240V   |
| 5 1/2           | 140  | 125   | 15.7            | 2.4             | SS1001                  | —      | —         | PT512              | —      |
| 6               | 152  | 150   | 15.2            | 2.4             | SS1011                  | SS1022 | —         | PT615              | —      |
| 7 1/4           | 184  | 100   | 8.2             | 1.3             | SS1031                  | —      | —         | —                  | —      |
| 7 1/4           | 184  | 150   | 12.3            | 1.9             | SS1041                  | SS1052 | —         | OT715              | OT715  |
| 8               | 203  | 150   | 10.0            | 1.6             | SS1061                  | SS1072 | —         | OT815              | OT815  |
| 8               | 203  | 175   | 11.7            | 1.8             | SS1081                  | SS1092 | —         | OT817              | OT817  |
| 10 1/2          | 267  | 250   | 10.3            | 1.6             | SS1101                  | SS1112 | —         | OT1025             | —      |
| 11 3/4          | 298  | 250   | 8.6             | 1.3             | SS1141                  | SS1152 | —         | OT1225             | OT1225 |
| 14              | 356  | 300   | 8.0             | 1.2             | SS1181                  | SS1192 | —         | OT1430             | OT1430 |
| 15              | 381  | 325   | 7.9             | 1.2             | SS1201                  | SS1212 | —         | OT1532             | OT1532 |
| 17 3/4          | 451  | 350   | 6.8             | 1.1             | SS1221                  | SS1232 | —         | OT1835             | OT1835 |
| 17 3/4          | 451  | 375   | 7.3             | 1.1             | SS1241                  | SS1252 | —         | OT1837             | OT1837 |
| 17 3/4          | 451  | 500   | 9.7             | 1.5             | SS1261                  | SS1272 | —         | OT1850             | OT1850 |
| 17 3/4          | 451  | 250   | 4.8             | 0.7             | SS1281                  | SS1292 | —         | —                  | —      |
| 19 1/2          | 495  | 350   | 6.0             | 0.9             | SS1301                  | SS1312 | —         | —                  | OT1935 |
| 19 1/2          | 495  | 500   | 8.6             | 1.3             | SS1321                  | SS1332 | —         | OT1950             | OT1950 |
| 21              | 533  | 500   | 7.8             | 1.2             | SS1341                  | SS1352 | —         | OT2150             | OT2150 |
| 23 1/2          | 597  | 500   | 6.8             | 1.1             | SS1361                  | SS1372 | SS1386    | OT2450             | OT2450 |
| 23 1/2          | 597  | 750   | 10.3            | 1.6             | SS1391                  | SS1402 | —         | OT2475             | OT2475 |
| 25 1/2          | 648  | 500   | 6.2             | 1.0             | SS1421                  | SS1432 | —         | OT2550             | OT2550 |
| 25 1/2          | 648  | 750   | 9.3             | 1.4             | SS1441                  | SS1452 | —         | OT2575             | OT2575 |
| 26 3/4          | 679  | 700   | 8.2             | 1.3             | SS1461                  | SS1472 | —         | —                  | OT2670 |
| 30 1/4          | 768  | 750   | 7.6             | 1.2             | SS1481                  | SS1492 | 2A830A706 | OT3075             | —      |
| 33 1/2          | 851  | 750   | 6.8             | 1.1             | SS1511                  | SS1522 | —         | —                  | OT3375 |
| 35 3/4          | 908  | 1000  | 8.4             | 1.3             | SS1531                  | SS1542 | 2A835A703 | OT3610             | OT3610 |
| 38 1/2          | 978  | 800   | 6.2             | 1.0             | SS1561                  | SS1572 | —         | —                  | —      |
| 38 1/2          | 978  | 1000  | 7.7             | 1.2             | SS1581                  | SS1592 | —         | OT3810             | —      |
| 42 1/4          | 1073 | 1250  | 8.7             | 1.3             | SS1601                  | SS1612 | —         | —                  | —      |
| 42 1/4          | 1073 | 1500  | 10.5            | 1.6             | SS1621                  | SS1632 | —         | —                  | —      |

SS

...continued from previous page

Heaters with high temperature stainless steel sheath are listed in Table 2.



### Stainless Steel Sheath

The entire heater assembly is encased in a stainless steel sheath and is compressed under high pressure. The sheath combines additional corrosion protection and excellent appearance. Stainless steel strip heaters are suitable for applications where the maximum sheath temperature does not exceed 649°C (1200°F).

### Installation

Standard strip heaters listed are rated at 120 and 240 volts. A limited selection of 287V heaters is also tabled. All strip heaters can be used on voltages lower than listed for reduced wattage, and some designs can also be used on higher voltages - check factory.

Whenever voltage to ground exceeds 300V, secondary insulators must be used. See page A34.

### To Order Specify

Quantity, catalog number, voltage, wattage and special features

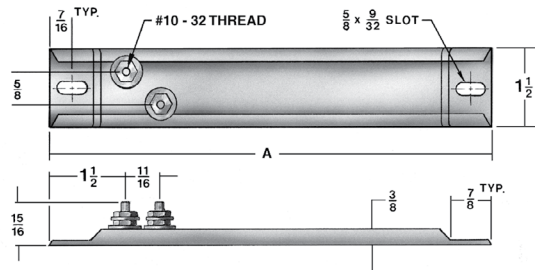


TABLE 2 - Type SS Strip Heaters - Terminals at One End/Stainless Steel Sheath

| 'A' Dim. | in.  | mm   | Watts Per |                 | Caloritech™ Catalog No. |        |           | Chromalox Cat. No. |        |
|----------|------|------|-----------|-----------------|-------------------------|--------|-----------|--------------------|--------|
|          |      |      | Watts     | in <sup>2</sup> | cm <sup>2</sup>         | 120V   | 240V      | 287V               | 120V   |
| 5 1/2    | 140  | 250  | 31.4      | 4.9             | SS2001                  | —      | —         | —                  | —      |
| 6        | 152  | 300  | 30.5      | 4.7             | SS2011                  | SS2022 | —         | —                  | —      |
| 7 1/4    | 184  | 100  | 8.2       | 1.3             | SS2031                  | —      | —         | —                  | —      |
| 7 1/4    | 184  | 200  | 16.4      | 2.5             | SS2041                  | SS2052 | —         | —                  | OT702  |
| 8        | 203  | 250  | 16.7      | 2.6             | SS2061                  | SS2072 | —         | OT802              | OT802  |
| 8        | 203  | 400  | 26.7      | 4.1             | SS2081                  | SS2092 | —         | OT804              | OT804  |
| 10 1/2   | 267  | 350  | 14.4      | 2.2             | SS2101                  | SS2112 | —         | OT1003             | OT1003 |
| 10 1/2   | 267  | 400  | 16.4      | 2.5             | SS2131                  | SS2132 | —         | OT1004             | OT1004 |
| 11 3/4   | 298  | 350  | 12.0      | 1.9             | SS2141                  | SS2152 | —         | OT1203             | OT1203 |
| 11 3/4   | 298  | 500  | 17.2      | 2.7             | SS2161                  | SS2172 | —         | OT1205             | OT1205 |
| 14       | 356  | 500  | 13.3      | 2.1             | SS2181                  | SS2192 | —         | OT1405             | OT1405 |
| 15       | 381  | 500  | 12.1      | 1.9             | SS2201                  | SS2212 | —         | —                  | OT1505 |
| 17 3/4   | 451  | 350  | 6.8       | 1.1             | SS2221                  | SS2232 | —         | —                  | —      |
| 17 3/4   | 451  | 500  | 9.7       | 1.5             | SS2241                  | SS2252 | 2A917A707 | —                  | —      |
| 17 3/4   | 451  | 750  | 14.5      | 2.2             | SS2261                  | SS2272 | —         | OT1807             | OT1807 |
| 17 3/4   | 451  | 1000 | 19.4      | 3.0             | SS2281                  | SS2292 | —         | OT1801             | OT1801 |
| 19 1/2   | 495  | 500  | 8.6       | 1.3             | SS2301                  | SS2312 | —         | OT1905             | OT1905 |
| 19 1/2   | 495  | 1000 | 17.2      | 2.7             | SS2321                  | SS2332 | —         | —                  | OT1901 |
| 21       | 533  | 750  | 11.8      | 1.8             | SS2341                  | SS2352 | —         | OT2107             | OT2107 |
| 23 1/2   | 597  | 500  | 6.8       | 1.1             | SS2361                  | SS2372 | —         | OT2405             | OT2405 |
| 23 1/2   | 597  | 750  | 10.3      | 1.6             | SS2381                  | SS2392 | 2A923A703 | OT2407             | OT2407 |
| 23 1/2   | 597  | 1000 | 13.7      | 2.1             | SS2401                  | SS2412 | —         | OT2401             | OT2401 |
| 25 1/2   | 648  | 750  | 9.3       | 1.4             | SS2421                  | SS2432 | —         | OT2507             | OT2507 |
| 25 1/2   | 648  | 1000 | 12.4      | 1.9             | SS2441                  | SS2452 | —         | —                  | OT2501 |
| 26 3/4   | 679  | 1000 | 11.7      | 1.8             | SS2461                  | SS2472 | —         | —                  | OT2601 |
| 30 1/4   | 768  | 750  | 7.6       | 1.2             | —                       | SS2482 | —         | —                  | OT3007 |
| 30 1/4   | 768  | 1000 | 10.2      | 1.6             | SS2491                  | SS2502 | 2S930A701 | —                  | —      |
| 33 1/2   | 851  | 750  | 6.8       | 1.1             | SS2511                  | SS2522 | —         | —                  | OT3307 |
| 35 3/4   | 908  | 1000 | 8.4       | 1.3             | —                       | SS2532 | —         | —                  | —      |
| 35 3/4   | 908  | 1500 | 12.6      | 2.0             | SS2541                  | SS2552 | 2A935A701 | —                  | —      |
| 38 1/2   | 978  | 1000 | 7.7       | 1.2             | SS2561                  | SS2572 | —         | OT3801             | —      |
| 42 1/4   | 1073 | 1250 | 8.7       | 1.3             | SS2601                  | SS2612 | —         | —                  | —      |
| 42 1/4   | 1073 | 1500 | 10.5      | 1.6             | SS2621                  | SS2632 | —         | —                  | OT4315 |

SS

