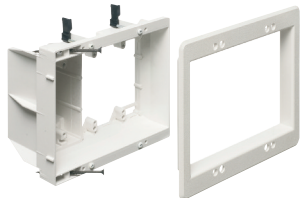


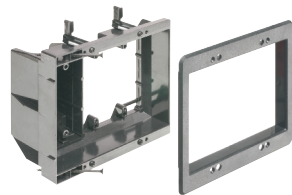


Multiple Gang Recessed TV BOX™ for Power and Low Voltage

For new or existing construction. Non-metallic, recessed combo boxes for power and low voltage for class 2 wiring of satellite or cable TV, speakers, etc.



TVBU507



TVBU507BL

TVBR505K Kit

Includes: Recessed combo box; (1) tamper-resistant duplex receptacle, (1) CEDH1, (1) CED130, and (1) wall plate.

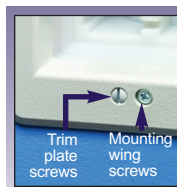
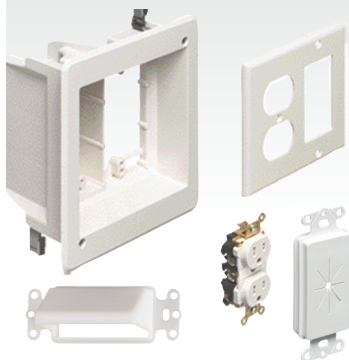


Photo B - Screws

CATALOG NUMBER	UPC/DCI/NAED MFG #018997	DESCRIPTION	UNIT	STD	DIM A	DIM B	DIM C
TVBU505*	90680	2-Gang, White, (1) Power/ (1) LV	1	4	6.942	6.254	3.750
TVBU505BL*	09681	2-Gang, Black, (1) Power/ (1) LV	1	4	6.942	6.254	3.750
TVBR505K*	09682	Kit, 2-Gang, White, (1) Power/ (1) LV	1	4	6.942	6.254	3.750
TVBU507	09661	3-Gang, White, (1) Power/ (2) LV	1	4	7.930	6.818	3.875
TVBU507BL	09662	3-Gang, Black, (1) Power/ (2) LV	1	4	7.930	6.818	3.875

Add suffix "GC" to Catalog # when ordering in Canada, for example TVBU505GC.

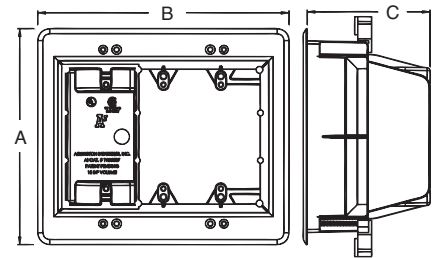
*Optional box covers available on page P-9.



E170558 LR49636

Features and Benefits

- Recessed combo box allows you to mount LCD/plasma TVs and other system components flush against the wall
- For new work...Use supplied screws to install on stud. For convenience, box positioning tabs are set for 1/2" or 5/8" drywall
- Trim plate is textured/paintable and covers edges of cut wall surface
- Mounting wings hold bracket securely against wall when screws are tightened
- For walls up to 1-1/2" thick
- Use with Arlington's SCOOP™ series entrance hoods and plates (see pages O-6 to O-8)



18.0 cu. in. TVBU507

Includes...

Recessed combo box; (1) trim plate; (1) decorator style cover plate; and installation screws.

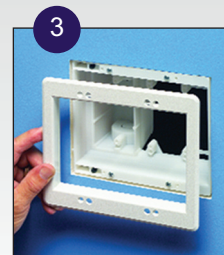
Installation Instructions - New Work (TVBU507 shown)



1 Attach box to stud. Use tabs for proper positioning of box depth. See 2.



2 Positioning tabs are set for 1/2" or 5/8" drywall.

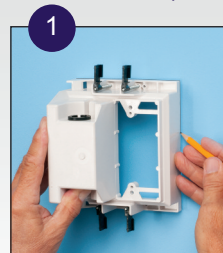


3 Attach paintable trim plate with screws provided. See Photo B.



4 Tighten mounting wing screws to pull the box securely against the wall board. See Photo B.

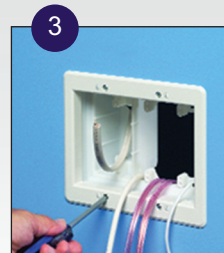
Retrofit Work (TVBU507 shown)



1 Using box, without trim plate as a template, mark location. Cut hole.



2 Attach trim plate to box. See Photo B. Pull wire/cables. Install box assembly in opening.



3 Tighten mounting wing screws to pull the box securely against the wall board. See Photo B.



4 TVBU505 with power in one side; low voltage in the other. CED13 (page O-6) used to secure wall plate to box.

Scan For Video

