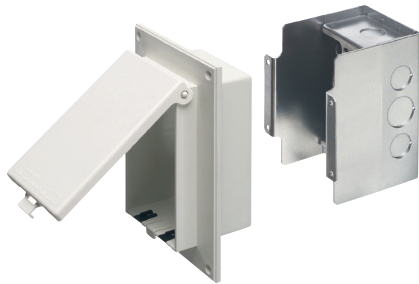


Low Profile IN BOX™ with Metal Box for Flat Surface Retrofit Construction

Recessed, metallic electrical box with non-metallic, extra-duty weatherproof-in-use cover for flat surfaces in existing construction. Accepts most single gang wiring devices and uses standard indoor wall plates or a GFCI cover plate. Non-metallic portion and covers are UV rated plastic for long outdoor life.



Bug Plugs ship installed in all IN BOX styles to seal unused cord hole openings.

Note: Meets 2014 NEC Section 406.9; for the protection of exterior outlets which require the use of an extra-duty weatherproof while-in-use cover for all outdoor 15 or 20 AMP receptacles.

CATALOG NUMBER	UPC/DCI/NAED MFG #018997	ORIENTATION/COVER COLOR	UNIT	STD PKG	DIM A	DIM B	DIM C	DIM D	DIM E
DSBVR1C	09654	Vertical/Clear	1	4	7.196	4.937	5.129	1.283	3.846
DSBVR1W	09655	Vertical/White	1	4	7.196	4.937	5.129	1.283	3.846
DSBHR1C	09656	Horizontal/Clear	1	4	4.937	7.196	5.129	1.283	3.846
DSBHR1W	09657	Horizontal/white	1	4	4.937	7.196	5.129	1.283	3.846

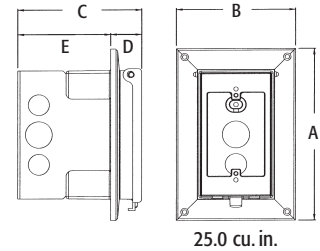
Replacement covers and siding profiles to convert for use on existing siding available on page K-17.

PATENTED. ADDITIONAL PATENTS PENDING.



**WEATHERPROOF-IN-USE
EXTRA-DUTY**

IN BOX for retrofit, flat surfaces includes...
Metallic box with non-metallic, weatherproof-in-use extra-duty cover; installed bug plugs; (1) standard duplex and (1) standard GFCI face plate; (1) set installation screws; and (1) roll of caulk.



FEATURES AND BENEFITS

- IN BOX replaces the installation of an electrical box and bubble cover assembly
- Installs in the wall, so less of it shows outside
- No gaskets required
- Use the retrofit IN BOX on plywood, T-111, and other flat surfaces
- Install option: Cover is removable for easier device installation
- White, non-metallic portion and white cover are textured/paintable
- Grounding wire provided
- For use with metal raceway systems

Scan For Video

