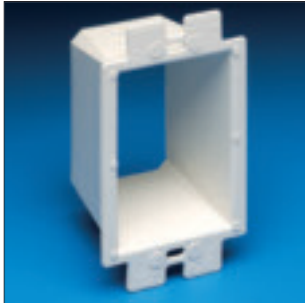


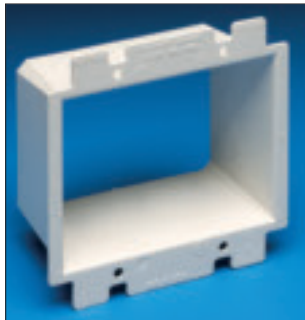


Box Extenders

Levels and supports the wiring device where the box is set back from the wall surface. Extends the box up to 1-1/2".



BE1



BE2

**HEAVY-DUTY
PLASTIC, UL LISTED!**

CATALOG NUMBER	UPC/DCI/NAED MFG #01 8997	STD PKG	DIM A	DIM B	DIM C
BE1	40160	25	2.313	4.188	1.813
BE1BAG	51905	1 per Bag 100 Bags per Box	2.313	4.188	1.813
BE2	48960	25	4.100	4.188	1.813

BE1BAG includes two #6 x 2" long screws.
PATENTED. ADDITIONAL PATENTS PENDING.

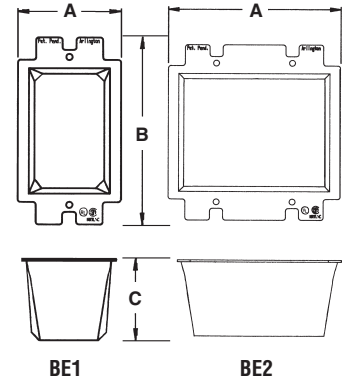


E170558 LR49636

2 Hour Fire Rating

Features and Benefits

- Allows the contractor to comply with 2005 NEC Article 314.20
- Levels and supports the wiring device where the box is set back from the wall surface (adjusts up to a 1-1/2" box extension)
- Works in handy boxes and 4" square electrical boxes with plaster rings for single switches or receptacle
- Functions with all standard devices, switches, and GFCIs
- Manufactured from 105°C continuous use 94V0 rated flame retardant plastic for safer installations



BE1 Installation Instructions

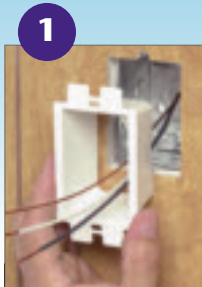
To install without removing device wires, tilt the device through the BE1 at a slight angle, straighten it and tighten the screws!

Problem...

Electrical box set back from wall surface.



SOLUTION...



Pull wires through, then press the BE1 firmly into the electrical box.



Attach wires to receptacle. Then tighten screws for a level, fully supported, code compliant installation.