

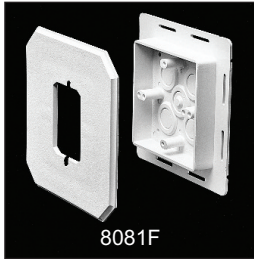


## Siding Box Kits

For smooth vertical mounting of fixtures and receptacles on sided structures. Paintable. UV rated plastic for long outdoor life.



8081



8081F



8082F (for 1/2" or less)



8081FC



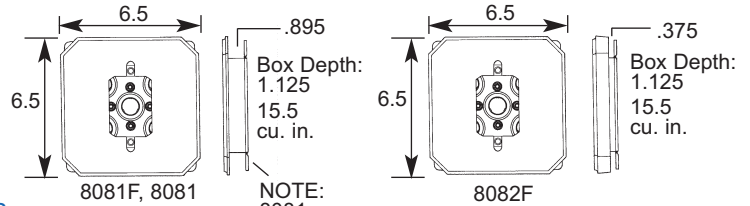
8081FB

CATALOG NUMBER	UPC/DCI/NAED MFG #018997	SIDING TYPE	USES	UNIT STD		STYLE
				PKG	PKG	
8081*	80812	All Types	Fixtures Devices	25	25	w/o Flange
8081F*	80814	All Types	Fixtures Devices	25	25	w/ Flange
8082F*	32240	1/2" or Less	Fixtures Devices	25	25	w/ Flange
8081FC*	10939	All Types	Fixtures Devices	25	25	Cover Only
8081FB*	10941	All Types	Fixtures Devices	25	25	Box Only

\*Add suffix "GC" to Catalog # when ordering in Canada, for example 8081FGC.



E170558 LR49636



NOTE: 8081 is not flanged.

### Features and Benefits

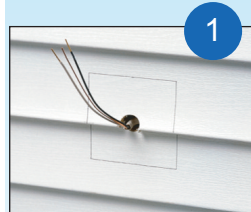
- UL Listed electrical box
- Works on all siding types – Before or After the siding is up!
- Flanges may be removed for retrofit work
- Textured, paintable surface
- NM cable connector included

For Installation Instructions 'AFTER Siding is Up' see Below. For Installation Instructions 'BEFORE Siding is Up' see Page L-2.

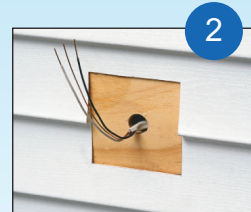
### Installation Instructions

#### AFTER Siding is Up... Without Flange (8081 & 8081DBL)

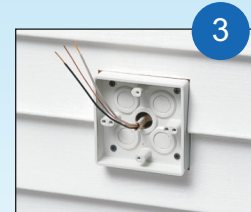
NOTE: 8081F, 8081FDBL, 8082F, 8091F, and 8091FDBL may also be installed when siding is already up – Score and break off flanges before step one (below).



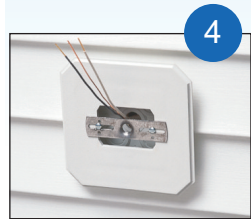
Disconnect electrical power. Place box section in desired location and pencil outline onto siding.



Cut along pencil line with razor knife and remove vinyl siding.



Mount box section to substrate. Caulk as required.



Place siding block over box section (8081 shown).



Connect wires and install fixture per manufacturer's instructions.

Siding Mounting Blocks